

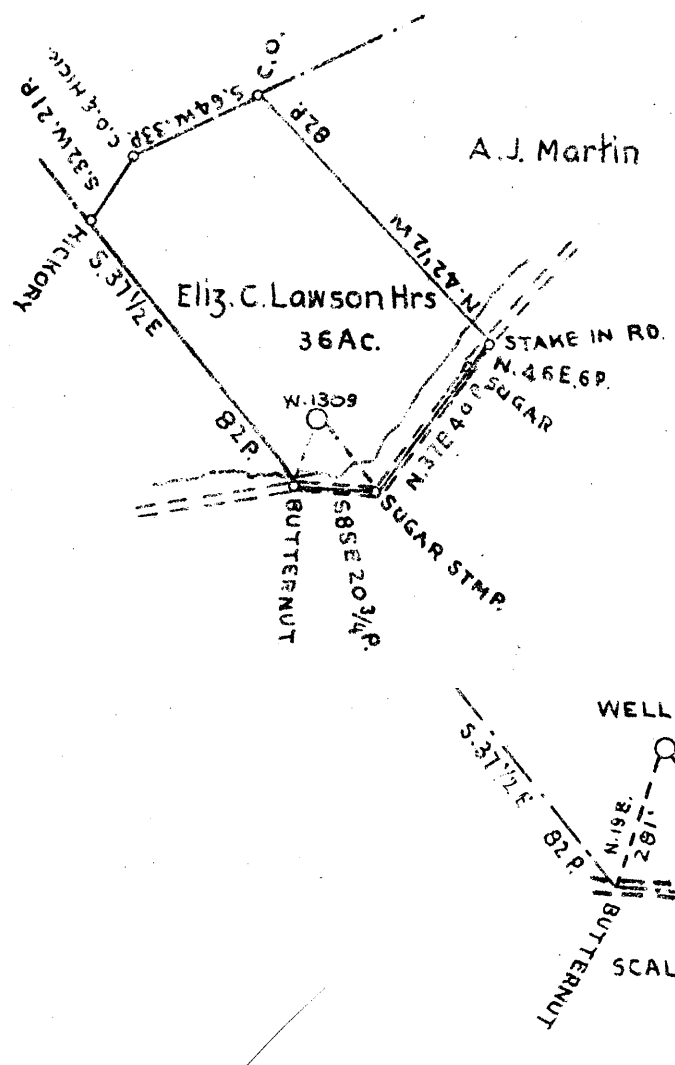
LATITUDE 39 ° 30

3.02 W
1.49 S

Jas. Anderson

L.L. Straley

A. J. Martin



WELL NO. 1309
ELEV. 856'

SCALE 1" = 400'

COAL OWNED BY MRS. McGEORGE, STAR ROUTE, MIDDLEBOURNE W.VA.

NEW LOCATION
 DRILL KEEPER
 ABANDONMENT

MAR 25 1947

3.08 W
1.05 S

COMPANY The Manufacturers Light & Heat Co.
 ADDRESS 800 Union Trust Bld'g Pittsburgh Pa.
 FARM Elizabeth C. Lawson
 TRACT ACRES 36 LEASE NO. 2913
 WELL FARM NO. 1 SERIAL NO. 1309
 ELEVATION (SPIRIT LEVEL) 856'
 QUADRANGLE West Union N.E. 1/4
 COUNTY Tyler DISTRICT Ellsworth
 ENGINEER *Glenn*
 ENGINEER'S REGISTRATION NO.
 FILE NO. DRAWING NO. Y-11-323
 DATE MARCH 5-47 SCALE 1" = 800'

AE

STATE OF WEST VIRGINIA
 DEPARTMENT OF MINES
 OIL AND GAS DIVISION
 CHARLESTON

WELL LOCATION MAP

FILE NO TYL-419-A

• DENOTES LOCATION OF WELL ON UNITED STATES TOPOGRAPHIC MAPS. SCALE 1 TO 62,500. LATITUDE AND LONGITUDE LINES BEING REPRESENTED BY BORDER LINES AS SHOWN.

• DENOTES ONE INCH SPACES ON BORDER LINE OF ORIGINAL TRACING

ELIZABETH C. LAWSON NO. 1 (1309) - M. L. & H. Co. - TYL-419-A



397

STATE OF WEST VIRGINIA
DEPARTMENT OF MINES
OIL AND GAS DIVISION

WELL RECORD

Permit No. 419-A

Oil or Gas Well Gas
(KIND)

Company THE MANUFACTURERS LIGHT & HEAT COMPANY
Address 800 Union Trust Building, Pgh, Pa.
Farm E. C. Lawson Acres 36
Location (waters).....
Well No. 1-1309 Elev. 856'
District Ellsworth County Tyler
The surface of tract is owned in fee by Bertha Anderson, Agt.
Middlebourne, W. Va. Address.....
Mineral rights are owned by The Mfrs. Light & Heat Co.
800 Union Trust Bldg., Address Pittsburgh, Pa.
Drilling commenced March 12th, 1903
Drilling completed April 29th, 1903
Date Shot From To
With

Casing and Tubing	Used in Drilling	Left in Well	Packers
Size			
16			Kind of Packer
18			
10	600'		Size of
8 1/2	1030'		
6 3/4	945'		Depth set
6 1/4	1000'		
3	2600'		Perf. top
2			Perf. bottom
Liners Used			Perf. top
			Perf. bottom

Open Flow /10ths Water in..... Inch
/10ths Merc. in..... Inch
Volume..... Cu. Ft.
Rock Pressure..... lbs..... hrs.
Oil..... bbls., 1st 24 hrs.
Fresh water..... feet..... feet
Salt water..... feet..... feet

CASING CEMENTED..... SIZE..... No. Ft..... Date
COAL WAS ENCOUNTERED AT 503 FEET..... INCHES
..... FEET..... INCHES..... FEET..... INCHES
..... FEET..... INCHES..... FEET..... INCHES

Formation	Color	Hard or Soft	Top	Bottom	Oil, Gas or Water	Depth Found	Remarks
Pittsburgh Coal			503				
Big Lime			1720				
Kenner Sand			1785				
Injun			1807				
Gordon			2585	2591			
Total Depth.				2621			
We have no record on file of bottom sands or thickness.							

MAR 1947
WEST VIRGINIA
DEPARTMENT OF MINES

Formation	Color	Hard or Soft	Top	Bottom	Oil, Gas or Water	Depth Found	Remarks

Date March 10th, 1947

APPROVED THE MANUFACTURERS LIGHT & HEAT COMPANY Owner

By Paul Cooper LAND AGENT.
(Title)

LAWSON NO. 1309 WELL.

Gal. No. 306A (134).

70405
now 419-A

Ellsworth District, Tyler County, W. Va.
Manufacturers Light & Heat Co.
Completed in 1903.
Gas well.
Elevation, approx. 850'. (?)
Right Fork on Muddy Creek.

	Top.	Bottom.
Pittsburgh Coal	503	
Cow Run Sand	1040	
Big Lime	1720	- 1785
Keener Sand	1785	- 1805
Big Injun Sand	1807	
Gordon Sand (gas, 2585')	2579	- 2591
Total depth		2740