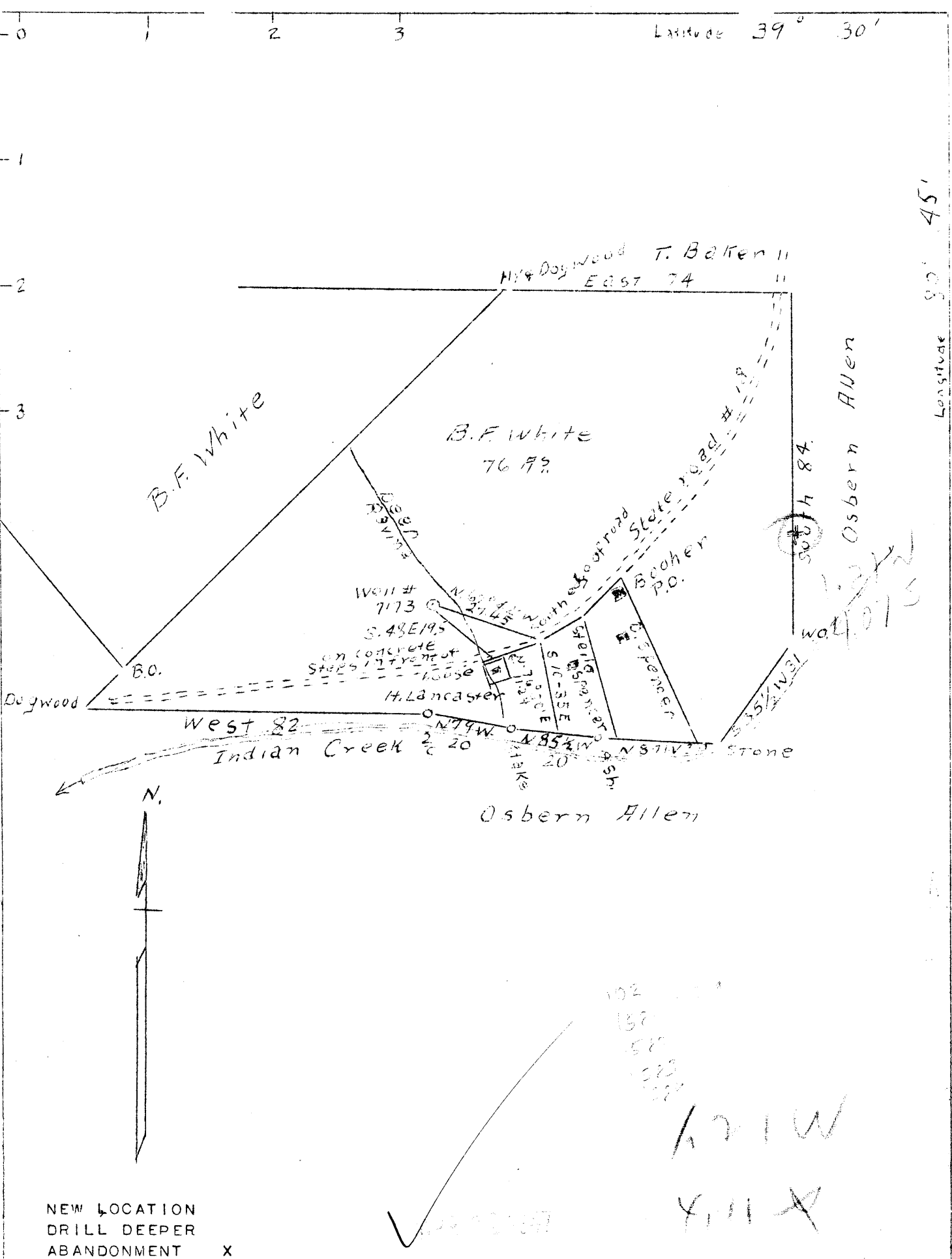


Latitude 39° 30'

Longitude 80° 45'



NEW LOCATION
 DRILL DEEPER
 ABANDONMENT X

COMPANY ALL PENN OIL & GAS CO.
 ADDRESS 311 ROSS ST., PITTSBURGH (19)
 FARM B. F. WHITE
 TRACT ONE ACRES 76 LEASE NO. _____
 WELL (FARM) NO. 1 SERIAL NO. 7173
 ELEVATION (SPIRIT LEVEL) 840'
 QUADRANGLE WEST UNION
 COUNTY TYLER DISTRICT MCELROY
 ENGINEER A. L. HEADLEY
 ENGINEER'S REGISTRATION NO. _____
 FILE NO. _____ DRAWING NO. _____
 DATE 11-18-46 SCALE 1" = 500 FT.

STATE OF WEST VIRGINIA
 DEPARTMENT OF MINES
 OIL AND GAS DIVISION
 CHARLESTON
 WELL LOCATION MAP
 FILE NO. TYL-420-A

+ DENOTES LOCATION OF WELL ON UNITED STATES TOPOGRAPHIC MAPS, SCALE 1 TO 62,500, LATITUDE AND LONGITUDE LINES BEING REPRESENTED BY BORDER LINES AS SHOWN.

- DENOTES ONE INCH SPACES ON BORDER LINE OF ORIGINAL TRACING.

6-6 (1093)

B.F. WHITE No. 1 (7173) - ALL PENN OIL & GAS Co. - TYL-420-A