

Latitude 39° 25'

Longitude 80° 55'

C.W. Everhart

Hickory

N18°W 55 P

S 11° 55' E 656'

N36 1/2° E 269'

stone

5+2
7+
8+

N36 1/2° E 42 1/2 P

#1

stone

#7

W.R. Bullman

S 72 1/2° W 151 R

#8

J.W. Musgrave
(now W.R. Bullman) 62 ±
on Walnut Run of
Sugar Creek

Luther Clevé

N 72° E 15 P along ridge

Not oriented
Property

#424 A

#426 A

#425 A

	1.25	S
#2	2.75	W
#5	1.24	S
	2.82	W
#7	1.35	S
	2.91	W
#8	1.48	S
	2.91	W

Wook

S 19 1/2° E 78 P
Rachel Mussor

stone

New Location...
Drill Deeper...
Abandonment...

Company Smith, Piersol, Fick & Coss
Address R2 Walker, W.Va.
Farm J.W. Musgrave
Tract _____ Acres 62 Lease No. _____
Well (Farm) No. 2 Serial No. _____
Elevation (Spirit Level) 1227
Quadrangle West Union
County Tyler District Meade
Engineer O. Meredith
Engineer's Registration No. _____
File No. _____ Drawing No. _____
Date May 5, 47 Scale 1 in = 20 Poles

STATE OF WEST VIRGINIA
DEPARTMENT OF MINES
OIL AND GAS DIVISION
CHARLESTON

WELL LOCATION MAP
FILE NO. 424-423-A

+ Denotes location of well on United States Topographic Maps, scale 1 to 62,500, latitude and longitude lines being represented by border lines as shown.

- Denotes one inch spaces on border line of original tracing.

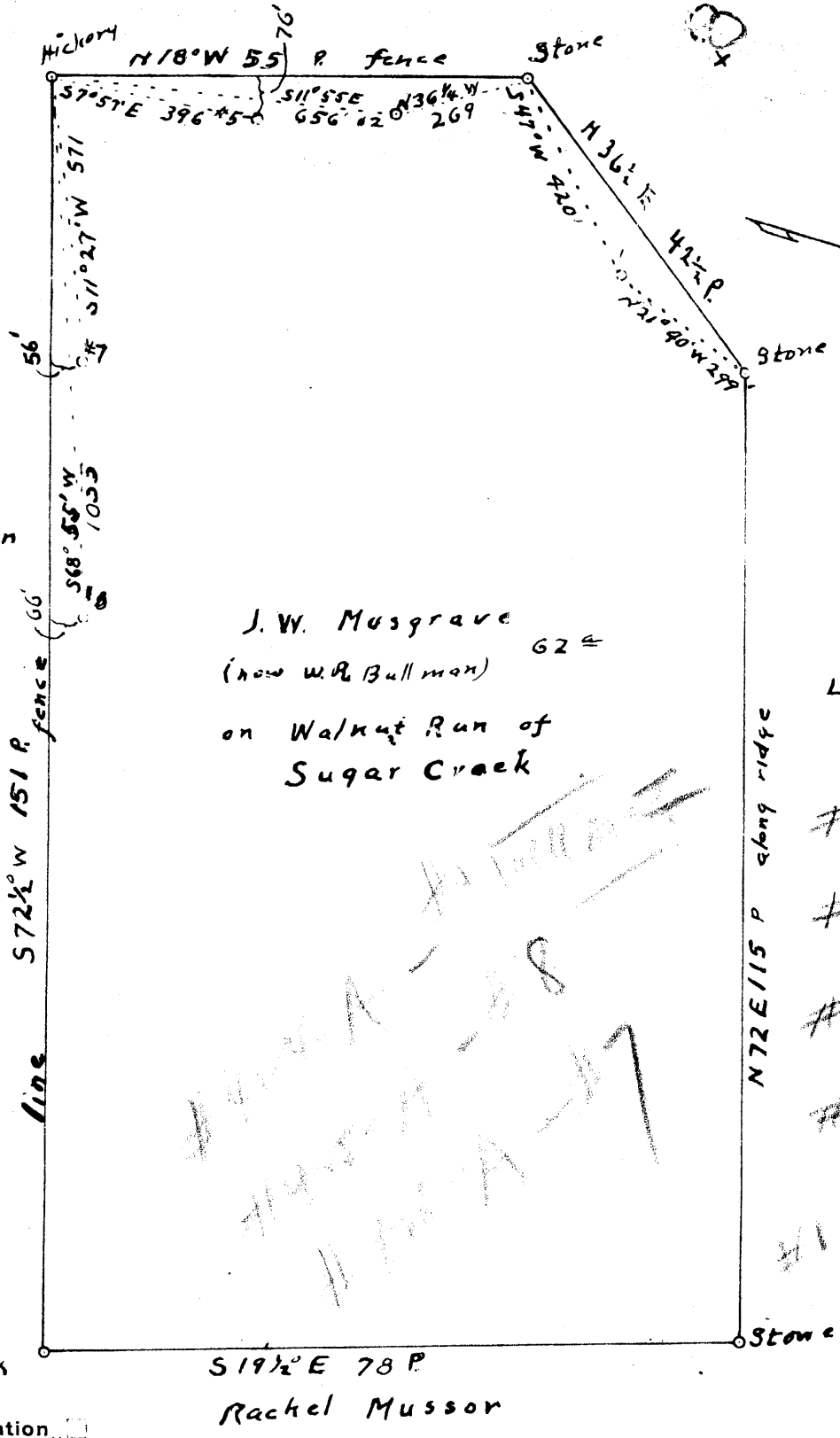
"IMPERIAL" TRACING CLOTH
K & E CO., N. Y.

see also plat 422

Latitude 39° 25'

Longitude 80° 55'

C.W Everhart



J.W. Musgrave
 (now W.R. Bullman) 62±
 on Walnut Run of
 Sugar Creek

Luther Cleve

#1	1.33 S	2.65 W
#5	1.19 S	2.64 W
#8	1.18 S	2.83 W
#7	1.16 S	2.74 W
#1	1.33 S	2.65 W

New Location
 Drill Deeper
 Abandonment

Company Smith, Pierson, Feick & Coss
 Address R2 Walker, W.Va.
 Farm J. W Musgrave
 Tract _____ Acres 62 Lease No. _____
 Well (Farm) No. 1 Serial No. _____
 Elevation (Spirit Level) 1225 1222 1200 1040 923
 Quadrangle West Union
 County Tyler District Meade
 Engineer O. Meredith
 Engineer's Registration No. _____
 File No. _____ Drawing No. _____
 Date May 5, 47 Scale 1" = 20 Poles

STATE OF WEST VIRGINIA
 DEPARTMENT OF MINES
 OIL AND GAS DIVISION
 CHARLESTON

WELL LOCATION MAP
 FILE NO. Tyler-422-A-11

+ Denotes location of well on United States Topographic Maps, scale 1 to 62,500, latitude and longitude lines being represented by border lines as shown.
 - Denotes one inch spaces on border line of original tracing.

J. W. MUSGRAVE (R. W. BULLMAN) NO. 7 WELL.
(Surface)

Meade District, Tyler County, W. Va.

By Smith, Piersol, Feick & Coss, Rt. No. 2, Walker, W. Va.

Abandoned under permit Tyl-.....-A?

On 62 acres, on Walnut Run - Sugar Creek.

Elevation, 1040' L.

Surface owned by R. W. Bullman, Wick, W. Va., and minerals by
Austin Smith, Clarksburg, W. Va.

Drilling commenced and completed in 1904.

10" casing, 480' (pulled); 8 $\frac{1}{4}$ " , 1267'; 6 $\frac{5}{8}$ " , 1750'.

Record furnished by South Penn Natural Gas Co.

Oil well. Abandonment reported to Dept. of Mines May 16, 1947.

Record to RCT from Mrs. Griffith Aug. 20, 1947. Old File No. 404.

	Top.	Bottom.
First Cow Run Sand	1030	- 1055
Second Cow Run Sand	1150	- 1175
First Salt Sand	1460	- 1500
Second Salt Sand	1515	- 1630
Third Salt Sand	1690	- 1715
Maxton Sand	1835	- 1855
Big Lime	1873	- 1938
Keener Sand	1938	- 1963
Big Injun Sand (gas, 2007') (oil, 2007- 2015')	1985	- 2038
Total depth		2038

J. W. MUSGRAVE (R. W. BULLMAN) NO. 7 WELL.
(Surface)

Meads District, Tyler County, W. Va.
By Smith, Pierson, Feick & Co., Rt. No. 2, Walker, W. Va.
Abandoned under permit Tyl-¹²⁶126-1?
On 62 acres, on Walnut Run - Sugar Creek.
Elevation, 1040' L.
Surface owned by R. W. Bullman, Wick, W. Va., and minerals by
Austin Smith, Clarksburg, W. Va.
Drilling commenced and completed in 1904.
10" casing, 480' (pulled); 8 1/2", 1267'; 6 3/4", 1750'.
Record furnished by South Penn Natural Gas Co.
Oil well. Abandonment reported to Dept. of Mines May 16, 1947.
Record to RCT from Mrs. Griffith Aug. 20, 1947. Old File No. 404.

	Top.	Bottom.
First Cow Run Sand	1030	- 1055
Second Cow Run Sand	1150	- 1175
First Salt Sand	1460	- 1500
Second Salt Sand	1515	- 1690
Third Salt Sand	1690	- 1715
Hanson Sand	1835	- 1855
Big Lime	1873	- 1938
Kemper Sand	1938	- 1963
Big Injan Sand (gas, 2007') (oil, 2007- 2015')	1985	- 2038
Total depth		2038