

0

1

2

3

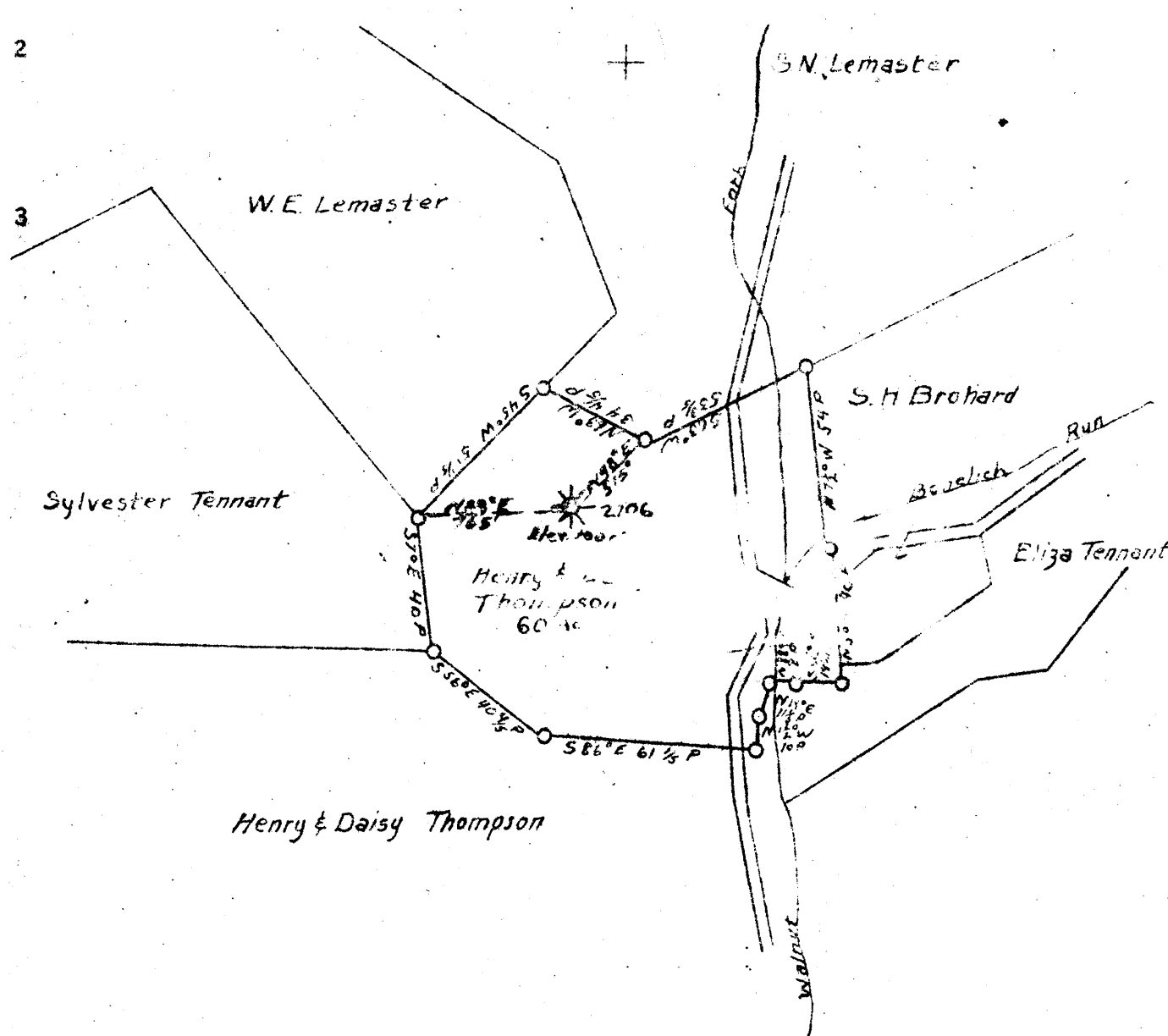
LATITUDE 34 30

1

2

3

LONGITUDE 90



COAL OWNED BY Gertrude Thompson Buena Park Calif.

- NEW LOCATION
- DRILL DEEPER
- ABANDONMENT

COMPANY *The Manufacturers Light and Heat Co.*
 ADDRESS *800 Union Trust Building Pittsburgh Pa.*
 FARM *Henry & Daisy Thompson*
 TRACT _____ ACRES *60* LEASE NO. *6894*
 WELL (FARM) NO. *1* SURFACE NO. *2706*
 ELEVATION (SPIRIT LEVEL) *1000*
 QUADRANGLE *Centerpoint W. Va.*
 COUNTY *Tyler* DISTRICT *McCloy*
 ENGINEER *Donald H. ...*
 ENGINEER'S REGISTRATION NO. _____
 FILE NO. _____ DRAWING NO. *Y-11-492*
 DATE *November 19, 1947* SCALE *1"=100'*

STATE OF WEST VIRGINIA
 DEPARTMENT OF MINES
 OIL AND GAS DIVISION
 CHARLESTON

WELL LOCATION MAP

FILE NO. *JYL-471-A*

+ DENOTES LOCATION OF WELL ON UNITED STATES TOPOGRAPHIC MAPS SCALE 1 TO 62,500 LATITUDE AND LONGITUDE LINES BEING REPRESENTED BY BORDER LINES AS SHOWN

- DENOTES ONE INCH SPACES ON BORDER LINE OF ORIGINAL TRACING.

HENRY & DAISY THOMPSON NO. 1 (2706) - M. L. & H. Co. - TYL-471-A



STATE OF WEST VIRGINIA
DEPARTMENT OF MINES
OIL AND GAS DIVISION

4

WELL RECORD

Permit No.

Oil or Gas Well Gas
(KIND)

Company THE MANUFACTURERS LIGHT & HEAT COMPANY
Address 800 Union Trust Bldg., Pgh, Penna.
Farm H. & D. Thompson Acres 60
Location (waters)
Well No. 2706 Elev. 1000'
District McElroy County Tyler
The surface of tract is owned in fee by Gertrude Thompson et al
720 Ninth St., Address Buena Park, Calif.
Mineral rights are owned by The Mfrs. Light & Heat Co.
800 Union Trust Bldg. Address Pittsburgh, Penna.
Drilling commenced Sept. 25th, 1921
Drilling completed October 30th., 1921
Date Shot From To
With
Open Flow /10ths Water in Inch
..... /10ths Merc. in Inch
Volume Cu. Ft.
Rock Pressure lbs hrs.
Oil bbls., 1st 24 hrs.
Fresh water feet feet
Salt water feet feet

Casing and Tubing	Used in Drilling	Left in Well	Packers
Size			
16			Kind of Packer.....
18			
20	200' 1"		Size of.....
8 1/4	1291' 8"		
6 1/2	2010' 0"		Depth set.....
5 3/16			
3			Perf. top.....
2			Perf. bottom.....
Liners Used.....			Perf. top.....
			Perf. bottom.....

CASING CEMENTED..... SIZE..... No. Ft..... Date.....
COAL WAS ENCOUNTERED AT 528 FEET 36 INCHES
768 FEET 36 INCHES..... FEET..... INCHES
..... FEET..... INCHES..... FEET..... INCHES

Formation	Color	Hard or Soft	Top	Bottom	Oil, Gas or Water	Depth Found	Remarks
Soil			0	11			
Lime			11	34			
Slate			34	100	Water at 95' - 4Bbls per hrs.		
Red Rock			100	118			
Lime			118	172			
Lime shells			172	190			
Red Rock			190	285			
Lime			285	326			
Red Rock			326	356			
Lime shells			356	416			
Slate			416	443			
Lime			443	463			
Lime shells			463	511			
Slate			511	528			
Native Coal			528	531			
Slate & Shells			531	768			
Pgh Coal			768	771			
Slate & Shells			771	1166			
Little Dunkard			1166	1195			
Slate & Shells			1195	1315			
Big Dunkard			1315	1343			
Slate & Shells			1343	1370			
Gas Sand			1370	1440			
1st. Salt Sand			1452	1496			
Slate & Shells			1496	1546			
2nd. Salt Sand			1546	1605			
Slate & Shells			1605	1801			
3rd. Salt Sand			1801	1843			
Slate & Shells			1843	1865			
Maxon Sand			1865	1930			
Slate & Shells			1930	1956			
Little Lime			1956	1970			
Pencil Cave			1970	1978			
Blue Monday			1978	2034			
Big Lime			2034	2060			
Big Injun			2060	2072			
Gas Sand			2072				
Total				2097			

Formation	Color	Hard or Soft	Top	Bottom	Oil, Gas or Water	Depth Found	Remarks

Date Nov. 20th, 1947

APPROVED THE MANUFACTURERS LIGHT & HEAT COMPANY Owner

By J. Ben Cooper LAND AGENT.
(Title)