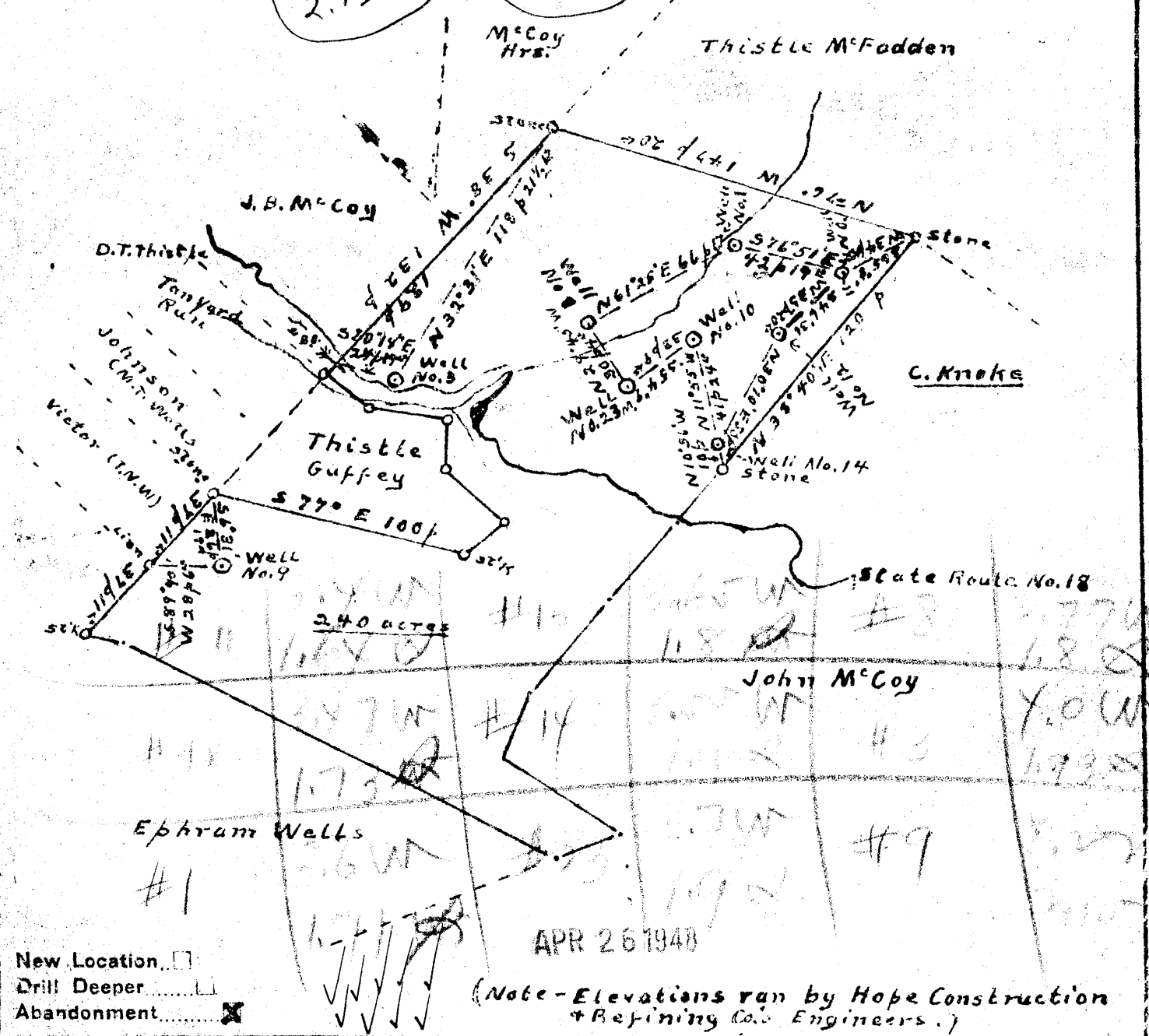
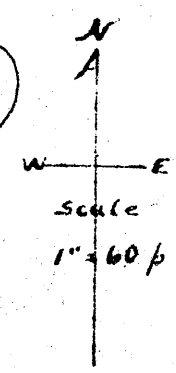
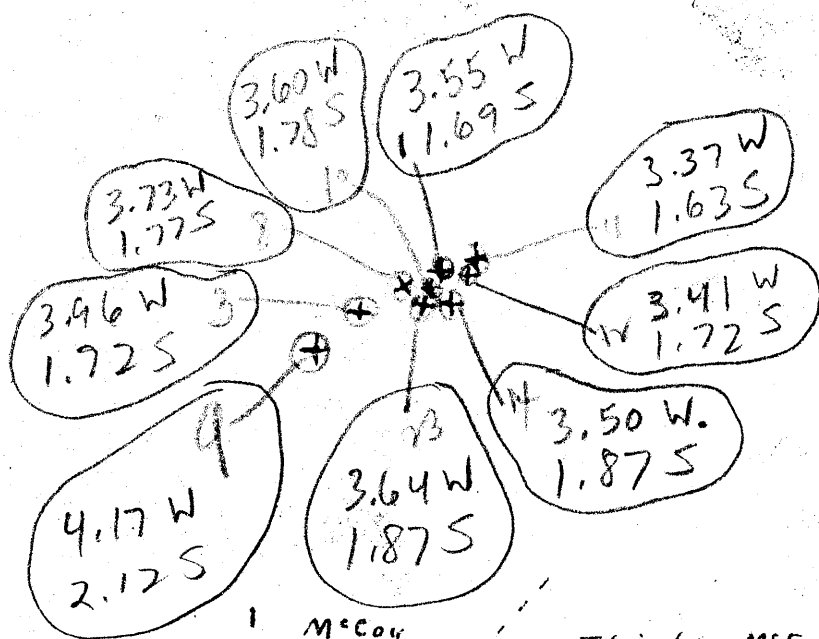


Latitude 35

Longitude 80 55



APR 26 1948

(Note - Elevations run by Hope Construction & Refining Co. Engineers.)

- New Location
- Drill Deeper
- Abandonment

Company Frank Lando
 Address Box 356 Bellair, Ohio
 Farm N. Salisbury
 Tract 1 Acres 240 Lease No. 8-8-11-12-10
 Well (Farm) No. 14 Serial No. 182
 Elevation (Spirit Level) 3-837' 9-986' 11-1042' 12-1049' 14-1041' 25-885'
 Quadrangle New Martinsville
 County Tyler District Lincoln
 Engineer Don L. Riggle
 Engineer's Registration No. 046-1 Drawing No. Aug. 647, 47 Scale 1" = 60 ft

STATE OF WEST VIRGINIA
 DEPARTMENT OF MINES
 OIL AND GAS DIVISION
 JYL-478-A-#8 CHARLESTON JYL-480-A-#10
 JYL-479-A-#9 JYL-481-A-#11
WELL LOCATION MAP
 FILE NO. JYL-482-A-#12
 JYL-440-A-#1 JYL-483-A-#14
 JYL-441-A-#3 JYL-484-A-#23
 + Denotes location of well on United States Topographic Maps, scale 1 to 62,500, latitude and longitude lines being represented by border lines as shown.
 - Denotes one inch spaces on border line of original tracing.