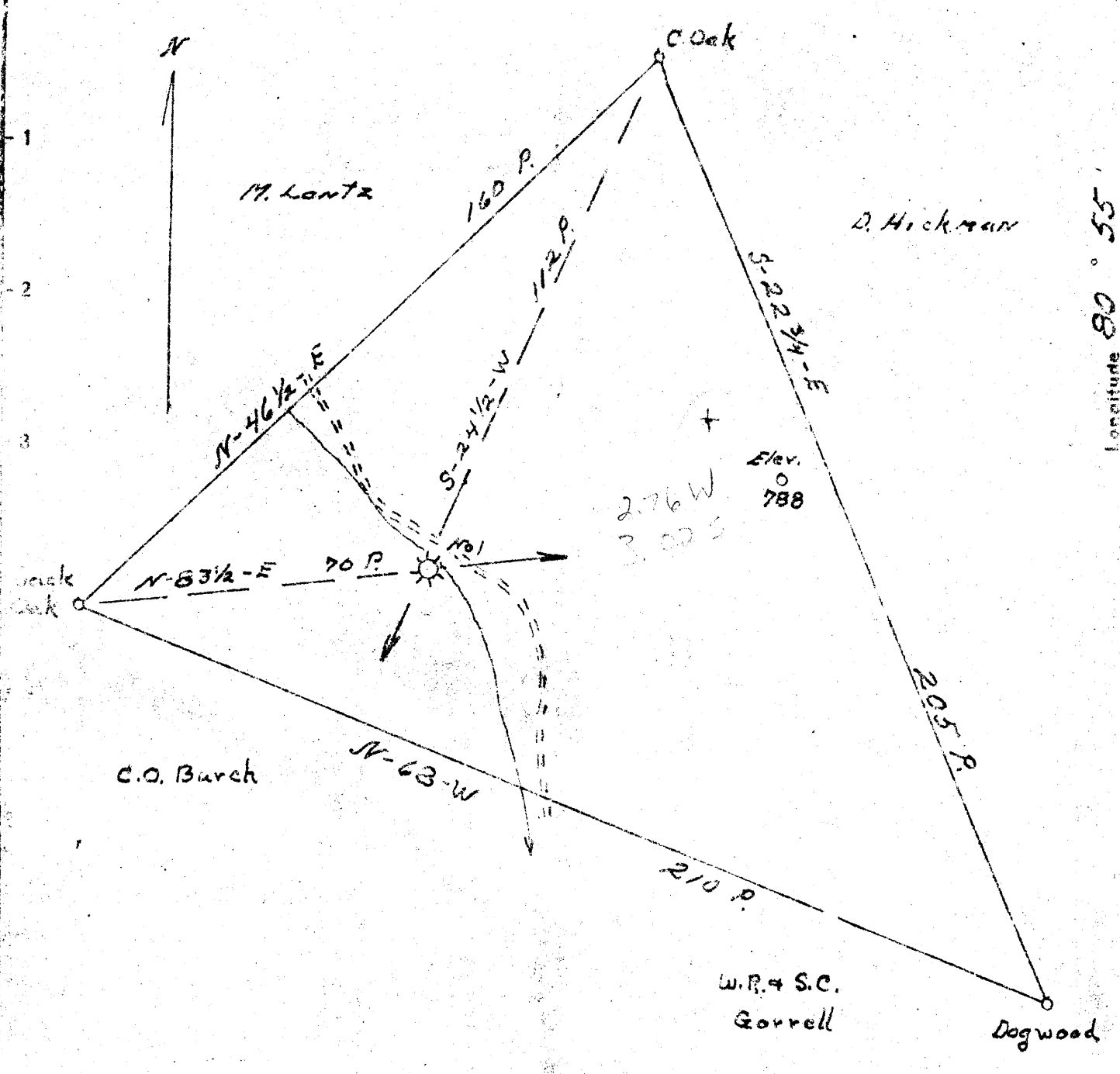


Latitude 35° 30'

Longitude 80° 55'



New Location   
 Will Deepen   
 Re-orientation

Company American Oil Development Co  
 Address Sistersville W. Va  
 Farm Fish Heirs  
 Acres 86 Lease No. \_\_\_\_\_  
 Well (Farm) No. One Serial No. \_\_\_\_\_  
 Elevation (Spirit Level) 841.95  
 Quadrangle West Union  
 County Tyler District North  
 Engineer J. P. Hought  
 Engineer's Registration No. Tyler County  
 File No. \_\_\_\_\_ Drawing No. \_\_\_\_\_  
 Date 7-15-48 Scale 30 ads = 1 inch

STATE OF WEST VIRGINIA  
 DEPARTMENT OF MINES  
 OIL AND GAS DIVISION  
 CHARLESTON

WELL LOCATION MAP  
 FILE NO. JYL-501-A

+ Denotes location of well on United States Topographic Maps, scale 1 to 62,500, latitude and longitude lines being represented by border lines as shown.

- Denotes one inch spaces on border line of original tracing.



STATE OF WEST VIRGINIA  
DEPARTMENT OF MINES  
OIL AND GAS DIVISION

534

WELL RECORD

Permit No. 101 A

Oil or Gas Well Gas Well  
(KIND)

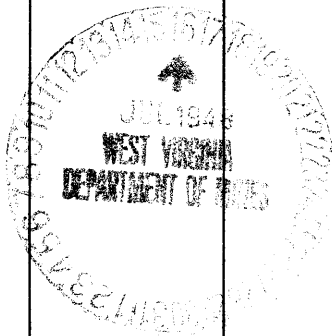
Company American Oil Development Co.,  
Address Sistersville, West Virginia.  
Farm Fish Heirs Acres 96  
Location (waters) Little Sancho Creek  
Well No. I (One) Elev. 841.95  
District Meade County Tyler  
The surface of tract is owned in fee by Otto Smith  
Address Middlebourne, W. Va.  
Mineral rights are owned by Fish Heirs, Mrs. Otto Smith, Atty.,  
Address Middlebourne, W. Va.  
Drilling commenced February 6th, 1928  
Drilling completed March 13th, 1928  
Date Shot \_\_\_\_\_ From \_\_\_\_\_ To \_\_\_\_\_  
With \_\_\_\_\_

Casing and Tubing	Used in Drilling	Left in Well	Packers
Size			Kind of Packer
16			
18			
10	<b>210</b>		Size of
8 1/4	<b>1000</b>		
6 5/8	<b>1390</b>	<b>1390</b>	Depth set
5 3/16			
3			Perf. top
2			Perf. bottom
Liners Used			Perf. top
			Perf. bottom

Open Flow \_\_\_\_\_ /10ths Water in \_\_\_\_\_ Inch  
\_\_\_\_\_ /10ths Merc. in \_\_\_\_\_ Inch  
Volume 250,000 Cu. Ft.  
Rock Pressure 345 lbs. lbs. \_\_\_\_\_ hrs.  
Oil I-1/2 bbls., 1st 24 hrs.  
Fresh water \_\_\_\_\_ feet \_\_\_\_\_ feet  
Salt water \_\_\_\_\_ feet \_\_\_\_\_ feet

CASING CEMENTED \_\_\_\_\_ SIZE \_\_\_\_\_ No. Ft. \_\_\_\_\_ Date \_\_\_\_\_  
COAL WAS ENCOUNTERED AT \_\_\_\_\_ FEET \_\_\_\_\_ INCHES  
\_\_\_\_\_ FEET \_\_\_\_\_ INCHES \_\_\_\_\_ FEET \_\_\_\_\_ INCHES  
\_\_\_\_\_ FEET \_\_\_\_\_ INCHES \_\_\_\_\_ FEET \_\_\_\_\_ INCHES

Formation	Color	Hard or Soft	Top	Bottom	Oil, Gas or Water	Depth Found	Remarks
Maxon Sand			1590	1623			
1st Pay			1595		Gas		
2nd Pay			1609	1620	Oil & Gas		
Total Depth				1635			



Formation	Color	Hard or Soft	Top	Bottom	Oil, Gas or Water	Depth Found	Remarks

Date July 15th, 1948

APPROVED American Oil Development Company owner

By Walter H. Hays  
(Title)

Sup't.

Meade District, Tyler County, W. Va.

American Oil & Dev. Co.

Elevation, 850'.

Gas well.

Completed in 1928. (?-500 M.) daily,

Original production, 55,000 cu. ft. gas/and 50 bbls. oil per year.

Present production: the same.

Original rock pressure, 158 lbs.

On Little Sancho Creek.

	Top.	Bottom.
Maxton Sand (gas, 1595'; 250,000 cu. ft.;		
gas, 1609-1620', 250,000 cu. ft.;		
rock pressure, 345 lbs.; 1½ bbls.		
oil)	1590 -	1623
Total depth		1635

The approx. elevation of top of Injun or Keener here would be -880' (estimated by adding 140' to depth of Maxton).