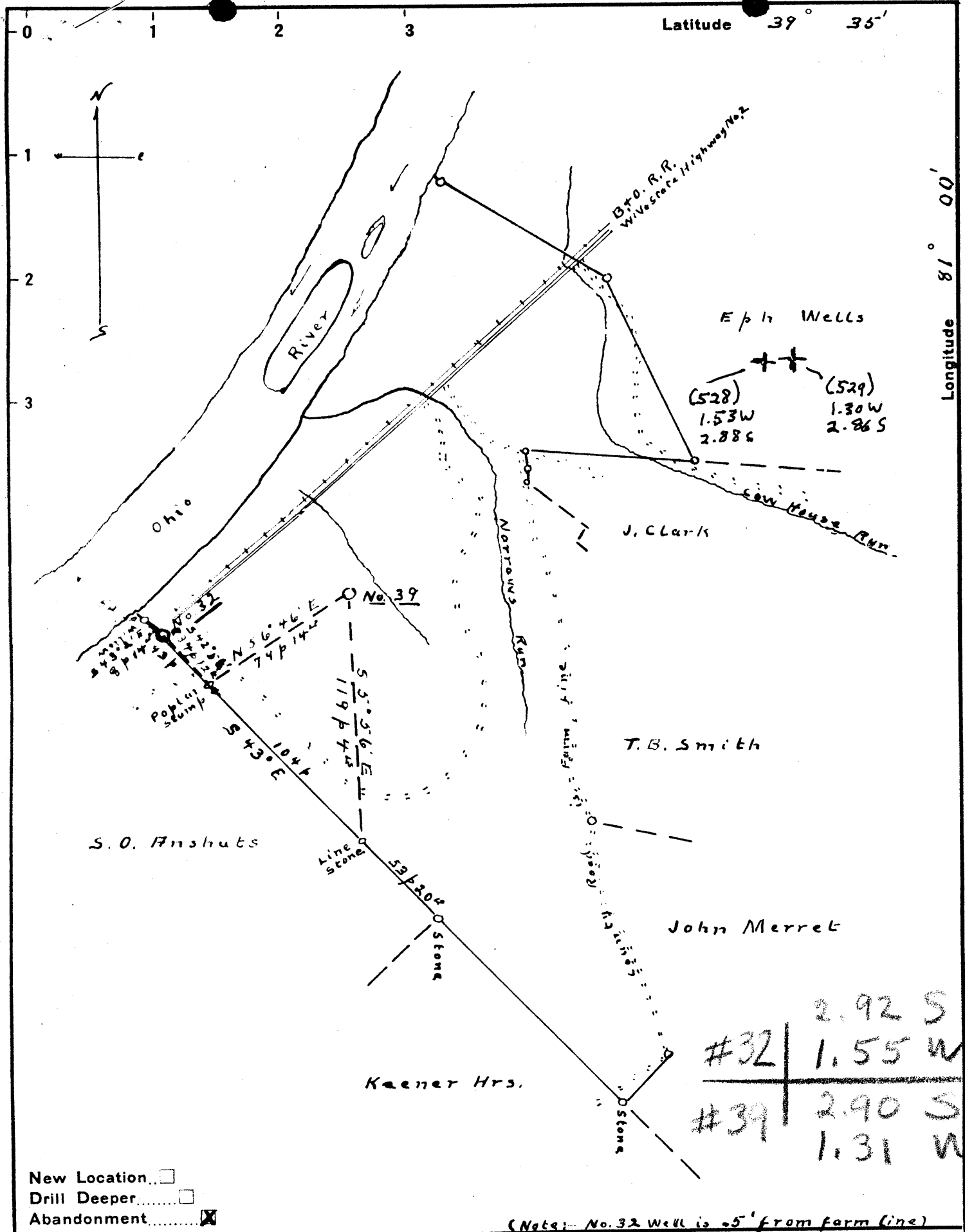


Latitude 39° 35'

Longitude 81° 00'



Company Roy W. Confer Co.

Address 515 Allen St., Titusville, Pa.

Farm F. R. Wells

Tract 1 Acres 478 Lease No. 6102-03

Well (Farm) No. 32 + 39 Serial No. \_\_\_\_\_

Elevation (Spirit Level) No. 32 - 684.69' No. 39 - 812.17'

Quadrangle New Matamoras

County Tyler District Lincoln *SE*

Engineer Don L. Riggle

Approved by George R. Clarke

Engineer's Registration No. 102

File No. 046-5211 Drawing No. 1431

Date 7-29-'48 Scale 1" = 60 f

STATE OF WEST VIRGINIA  
DEPARTMENT OF MINES  
OIL AND GAS DIVISION  
CHARLESTON

WELL LOCATION MAP

FILE NO. JYL-528-A-#32  
JYL-529-A-#39

+ Denotes location of well on United States Topographic Maps, scale 1 to 62,500, latitude and longitude lines being represented by border lines as shown.

- Denotes one inch spaces on border line of original tracing.



STATE OF WEST VIRGINIA  
DEPARTMENT OF MINES  
OIL AND GAS DIVISION

461

WELL RECORD

Permit No. 528-A

Oil or Gas Well Oil  
(KIND)

Company Roy W. Confer Co.  
Address 515 Allen St., Titusville, Pa.  
Farm F. R. Wells Acres 478  
Location (waters) \_\_\_\_\_  
Well No. 32 Elev. Drawing sent with previous application for this Farm  
District Lincoln County Tyler  
The surface of tract is owned in fee by \_\_\_\_\_  
Address \_\_\_\_\_  
Mineral rights are owned by Roy W. Confer  
Address Titusville, Pa  
Drilling commenced \_\_\_\_\_  
Drilling completed \_\_\_\_\_  
Date Shot NO Record From \_\_\_\_\_ To \_\_\_\_\_  
With \_\_\_\_\_  
Open Flow \_\_\_\_\_ /10ths Water in \_\_\_\_\_ Inch  
\_\_\_\_\_ /10ths Merc. in \_\_\_\_\_ Inch  
Volume \_\_\_\_\_ Cu. Ft.  
Rock Pressure \_\_\_\_\_ lbs. \_\_\_\_\_ hrs.  
Oil NO Record bbls., 1st 24 hrs.  
Fresh water \_\_\_\_\_ feet \_\_\_\_\_ feet  
Salt water \_\_\_\_\_ feet \_\_\_\_\_ feet

Casing and Tubing	Used in Drilling	Left in Well	Packers
Size			Kind of Packer
16			_____
13			
10			Size of _____
8 3/4			_____
<del>6 1/4</del> 6-1/4"	1080'		Depth set _____
5 3/16			_____
3			Perf. top _____
2			Perf. bottom _____
Liners Used			Perf. top _____
			Perf. bottom _____

CASING CEMENTED \_\_\_\_\_ SIZE \_\_\_\_\_ No. Ft. \_\_\_\_\_ Date \_\_\_\_\_  
COAL WAS ENCOUNTERED AT \_\_\_\_\_ FEET \_\_\_\_\_ INCHES  
\_\_\_\_\_ FEET \_\_\_\_\_ INCHES FEET \_\_\_\_\_ INCHES  
\_\_\_\_\_ FEET \_\_\_\_\_ INCHES FEET \_\_\_\_\_ INCHES

Formation	Color	Hard or Soft	Top	Bottom	Oil, Gas or Water	Depth Found	Remarks
Big Injun			1430'	1500'	Oil	1440	

RECORDED  
INDEXED  
JAN 10 1949  
DEPT. OF MINES

9

F. R. WELLS NO. 32 WELL.

5288

Lincoln District, Tyler County, W. Va.  
By Roy W. Confer Co., 515 Allen St., Titusville, Pa.  
Abandoned under permit Tyl-.....-A?  
On 47<sup>8</sup> acres.  
Elevation, ..... ' L.  
Minerals owned by Roy W. Confer, Titusville, Pa.  
Date of completion not given.  
6<sup>1</sup>/<sub>2</sub>" casing, 1080'.  
Oil well. Record to Dept. of Mines stamped Oct. 22, 1948.  
Record to RCT from Mrs. Griffith Jan. 5, 1949. Old File No. 461.

	Top.	Bottom.
Big Injun Sand (oil, 1440')	1430	1500
Total depth		1500'

F. R. WELLS NO. 32 (2117) WELL.

Gal.No.47 (19).

Lincoln District, Tyler County, W. Va.  
Hope Cons. & Ref. Co.  
Elevation, 675'.  
Oil well.  
On Ohio River.