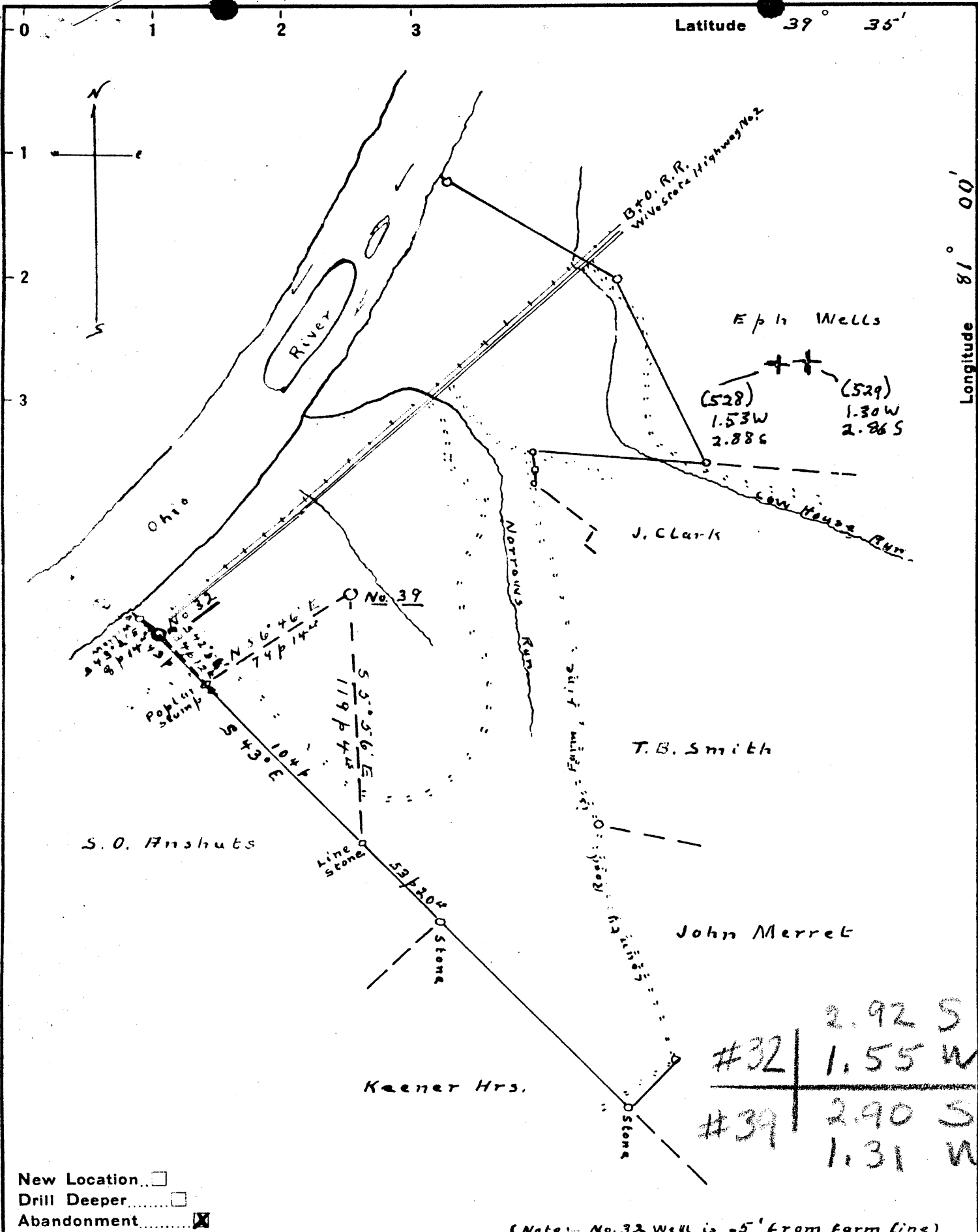


Latitude 39° 35'

Longitude 81° 00'



New Location
 Drill Deeper
 Abandonment

(Note: No. 32 Well is 5' from farm line)

Company Roy W. Confer Co.
 Address 515 Allen St., Titusville, Pa.
 Farm E. B. Wells
 Tract 1 Acres 478 Lease No. 6102-03
 Well (Farm) No. 32 + 39 Serial No. _____
 Elevation (Spirit Level) No. 32 - 684.69' No. 39 - 812.17'
 Quadrangle New Matamoras
 County Tyler District Lincoln
 Engineer Don L. Riggle
 Approved by George R. Clarke
 Engineer's Registration No. 107
 File No. 04G-SL 11 Drawing No. 1431
 Date 7-29-'48 Scale 1" = 60 p

STATE OF WEST VIRGINIA
 DEPARTMENT OF MINES
 OIL AND GAS DIVISION
 CHARLESTON

WELL LOCATION MAP
 FILE NO. JYL-528-A-#32
JYL-529-A-#39

+ Denotes location of well on United States Topographic Maps, scale 1 to 62,500, latitude and longitude lines being represented by border lines as shown.

- Denotes one inch spaces on border line of original tracing.



STATE OF WEST VIRGINIA
DEPARTMENT OF MINES
OIL AND GAS DIVISION

Y6V

WELL RECORD

Permit No. 529-A

Oil or Gas Well Oil
(KIND)

Company <u>Roy W. Confer Co.</u>	Casing and Tubing	Used in Drilling	Left in Well	Packers
Address <u>515 Allen Street, Titusville, Pa.</u>	Size			
Farm <u>F. R. Wells</u> Acres <u>Drawing sent with previous application for this Farm</u>	16			Kind of Packer
Location (waters)	13			
Well No. <u>39</u> Elev. <u>478</u>	10			Size of
District <u>Lincoln</u> County <u>Tyler</u>	8 1/4	800'		
The surface of tract is owned in fee by	6 1/4	1200'		Depth set
Address	5 3/16			
Mineral rights are owned by <u>Roy W. Confer Co.</u>	3			Perf. top
Address <u>Titusville, Pa.</u>	2			Perf. bottom
Drilling commenced	Liners Used			Perf. top
Drilling completed				Perf. bottom
Date Shot <u>No Record</u> From To				
With				
Open Flow /10ths Water in Inch	CASING CEMENTED SIZE No. Ft. Date			
/10ths Merc. in Inch				
Volume Cu. Ft.	COAL WAS ENCOUNTERED AT FEET INCHES			
Rock Pressure lbs. hrs.	FEET INCHES FEET INCHES			
Oil <u>No Record</u> bbls., 1st 24 hrs.	FEET INCHES FEET INCHES			
Fresh water feet feet				
Salt water feet feet				

Formation	Color	Hard or Soft	Top	Bottom	Oil, Gas or Water	Depth Found	Remarks
Big Injun			1574'	1652'	Oil	1579'	

RECORDED
INDEXED
JAN 10 1949

F. R. WELLS NO. 39 WELL.

5878

Lincoln District, Tyler County, W. Va.
By Roy W. Confer Co., 515 Allen St., Titusville, Pa.
Abandoned under permit Tyl-.....-A?
On 478 acres.

Elevation, ' L.

Minerals owned by Roy W. Confer Co., Titusville, Pa.

Date of completion not given.

8 $\frac{1}{2}$ " casing, 800'; 6 $\frac{1}{4}$ " , 1200'.

Oil well. Record to Dept. of Mines stamped Oct. 22, 1948.

Record to RCT from Mrs. Griffith Jan. 5, 1949. Old File No. 462.

Big Injun Sand (oil, 1579')

Total depth

Top. Bottom.

1574 - 1652

1652?