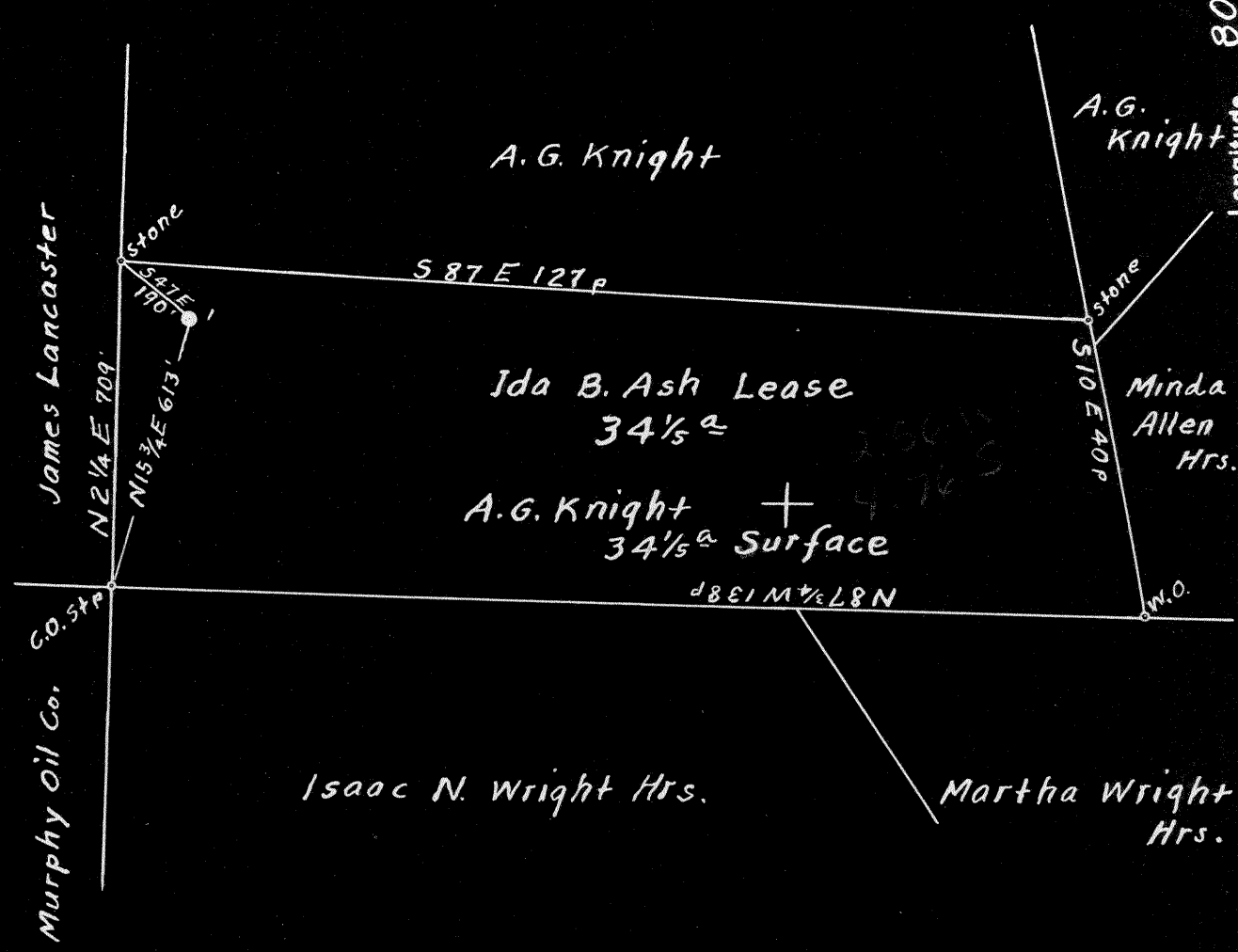


Latitude 39° 30'

Longitude 80° 40'

Scale 1" = 400 Feet



4.82 S  
2.58 W

Surface: A.G. Knight, Piney, Wetzel Co., W.Va.  
No Commercial Coal; if any, it belongs to the owner of the Surface.

New Location...   
Drill Deeper...   
Abandonment...

On 800' map, sheet N 47 S 2 W 5-6

Company Cassady & Mackey  
 Address Star Route, West Union, W.Va.  
 Farm Ida B. Ash  
 Tract \_\_\_\_\_ Acres 3 1/5 Lease No. NW  
 Well (Farm) No. 1 Serial No. \_\_\_\_\_  
 Elevation (Spirit Level) Floor = 1197.50  
Ground = 1195.50  
 Quadrangle Centerpoint  
 County Tyler District McElroy  
 Engineer Ernest C. Tabler  
 Engineer's Registration No. 2005  
 File No. \_\_\_\_\_ Drawing No. \_\_\_\_\_  
 Date Sept 24<sup>th</sup> 1948 Scale 1" = 400 Feet

STATE OF WEST VIRGINIA  
DEPARTMENT OF MINES  
OIL AND GAS DIVISION  
CHARLESTON

WELL LOCATION MAP  
FILE NO. JYL-530-A

+ Denotes location of well on United States Topographic Maps, scale 1 to 62,500, latitude and longitude lines being represented by border lines as shown.  
- Denotes one inch spaces on border line of original tracing.



STATE OF WEST VIRGINIA  
DEPARTMENT OF MINES  
OIL AND GAS DIVISION

457

WELL RECORD

Oil or Gas Well Oil  
(KIND)

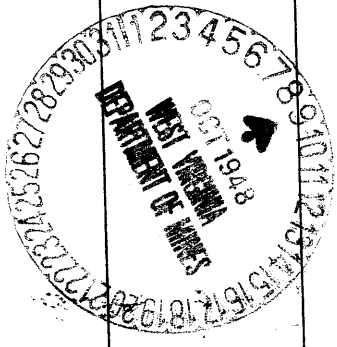
Permit No. 530-A

Company Cassady & Mackey  
Address Star Rt. West Union, W. Va.  
Farm Ida B. Ash Acres 34-1/5  
Location (waters) Indian Creek  
Well No. 1 Elev. 1195.50  
District McElroy County Tyler  
The surface of tract is owned in fee by A. G. Knight  
Address Piney, W. Va.  
Mineral rights are owned by Same  
Address \_\_\_\_\_  
Drilling commenced \_\_\_\_\_  
Drilling completed \_\_\_\_\_  
Date Shot 5/30/1900 From 2348 To 2357  
With 16 Qts  
Open Flow /10ths Water in \_\_\_\_\_ Inch  
/10ths Merc. in \_\_\_\_\_ Inch  
Volume \_\_\_\_\_ Cu. Ft.  
Rock Pressure \_\_\_\_\_ lbs. \_\_\_\_\_ hrs.  
Oil \_\_\_\_\_ bbls., 1st 24 hrs.  
Fresh water \_\_\_\_\_ feet \_\_\_\_\_ feet  
Salt water \_\_\_\_\_ feet \_\_\_\_\_ feet

Casing and Tubing	Used in Drilling	Left in Well	Packers
Size			Kind of Packer
16			
13			
10	424	0	Size of
8 1/4	1303	0	
6 3/8	1855	1855	Depth set
5 3/16	1417	1417	
3			Perf. top
2	2365	2365	Perf. bottom
Liners Used			Perf. top
			Perf. bottom

CASING CEMENTED \_\_\_\_\_ SIZE \_\_\_\_\_ No. Ft. \_\_\_\_\_ Date \_\_\_\_\_  
COAL WAS ENCOUNTERED AT \_\_\_\_\_ FEET \_\_\_\_\_ INCHES  
\_\_\_\_\_ FEET \_\_\_\_\_ INCHES FEET \_\_\_\_\_ INCHES  
\_\_\_\_\_ FEET \_\_\_\_\_ INCHES FEET \_\_\_\_\_ INCHES

Formation	Color	Hard or Soft	Top	Bottom	Oil, Gas or Water	Depth Found	Remarks
Pittsburgh	Coal		935	937			
NBig Injun	Sand		2257		Oil	2349 to	2352
					"	2359	
Total Depth				2369			



Formation	Color	Hard or Soft	Top	Bottom	Oil, Gas or Water	Depth Found	Remarks

Date \_\_\_\_\_, 19\_\_\_\_  
APPROVED. Robert Lassusky, Owner  
By \_\_\_\_\_ (Title)

