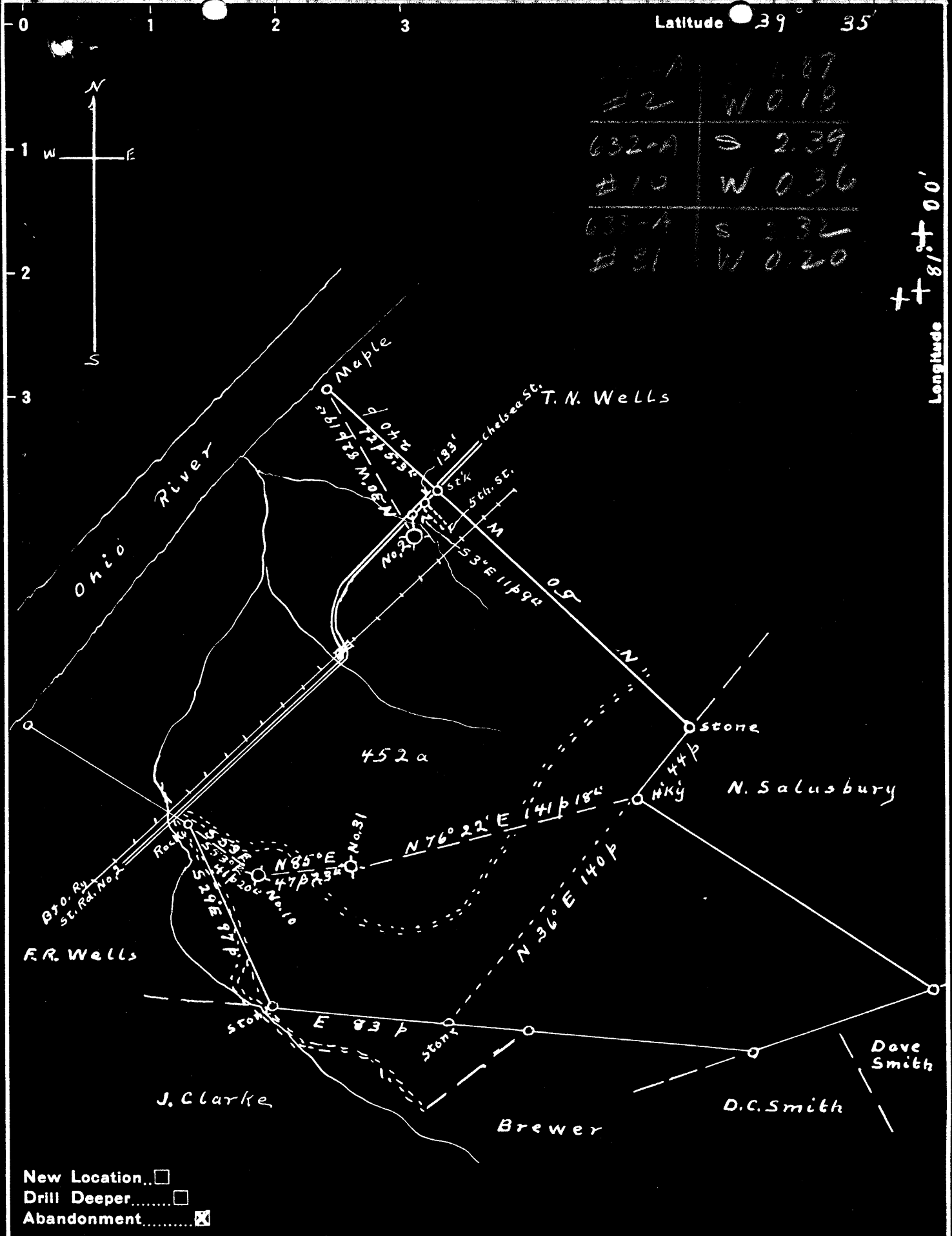


Latitude 39° 35'

632-A	S	2.39
#10	W	0.36
633-A	S	2.32
#31	W	0.20

Longitude 81° 00'



Company J.R. Bull  
 Address Sistersville, W. Va.  
 Farm Eph Wells  
 Tract 1 Acres 422 Lease No. 6078  
 Well (Farm) No. 2-10431 Serial No. No. 2-635 No. 31-776  
 Elevation (Spirit Level) No. 10-760  
 Quadrangle New Matamoras  
 County Tyler District Lincoln  
 Engineer Don L. Riggle  
 Approved by George R. Clarke  
 Engineer's Registration No. 102  
 File No. 046-SP 11 Drawing No. 1386  
 Date May 5, '48 Scale 1" = 60 p

STATE OF WEST VIRGINIA  
 DEPARTMENT OF MINES  
 OIL AND GAS DIVISION  
 CHARLESTON

WELL LOCATION MAP  
 FILE NO. TYL - 610 - A - 2  
~~TYL - 632 - A - 10~~  
~~TYL - 633 - A - 31~~

+ Denotes location of well on United States Topographic Maps, scale 1 to 62,500, latitude and longitude lines being represented by border lines as shown.  
 - Denotes one inch spaces on border line of original tracing.

EPH WELLS NO. 2 WELL.

Lincoln District, Tyler County, W. Va.  
By Maurice Herowitz, 310 W. McKean St., Butler, Pa.  
Abandoned under permit Tyl-.....-A?  
On 452 acres.  
Elevation, 635' L.  
Drilling completed Aug. 31, 1894.  
Shot Aug. 31, 1894, with 2 qts.; top of shot, 1410'.  
10" casing, 67' (pulled); 8 $\frac{1}{4}$ " , 275' (84' left in); 6 $\frac{5}{8}$ " , 975';  
4-7/8" , 847'.  
Oil well. Record to Dept. of Mines not dated or stamped.  
Record to RCT from Mrs. Griffith May 26, 1950. Old File No. 542.

Big Injun Sand  
Total depth

Top.	Bottom.
1400	- ....
	1446

