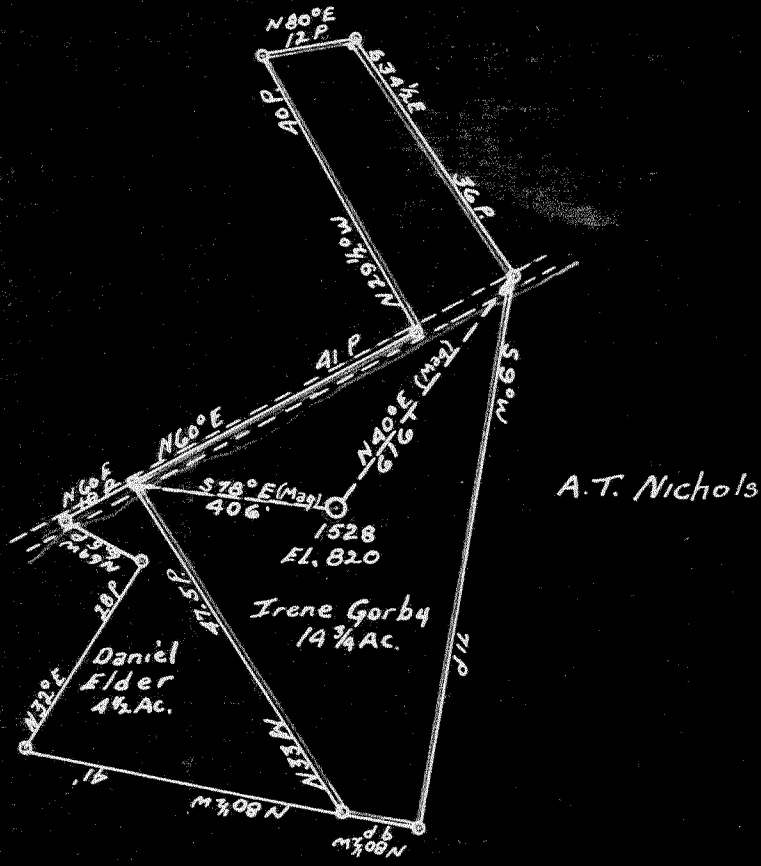


LATITUDE 39 ° 30 '

LONGITUDE 80 ° 45 '



A.T. Nichols

COAL OWNED BY Est. of E.B. Conaway & F.M. Conaway Admr. Pennsboro W. Va.
Claude H. Gorby, Agt. R.O. 2 Sistersville W. Va.

S 2.61
W 2.22

NEW LOCATION...
DRILL DEEPER...
ABANDONMENT...

COMPANY The Manufacturers Light & Heat Co
 ADDRESS 800 Union Trust Bldg. Pittsburgh Pa.
 FARM Irene Gorby
 TRACT _____ ACRES 14.75 LEASE No. 3686
 WELL (FARM) No. 1 SERIAL No. 1528
 ELEVATION (SPIRIT LEVEL) 820'
 QUADRANGLE West Union **NE**
 COUNTY Tyler DISTRICT McElroy
 ENGINEER John A. Louden
 ENGINEER'S REGISTRATION No. _____
 FILE No. _____ DRAWING No. Y-13-371
 DATE 3-27-50 SCALE 1" = 400'

STATE OF WEST VIRGINIA
DEPARTMENT OF MINES
OIL AND GAS DIVISION
CHARLESTON

WELL LOCATION MAP

FILE No. JYL-612-A

+ DENOTES LOCATION OF WELL ON UNITED STATES TOPOGRAPHIC MAPS, SCALE 1 TO 62,500. LATITUDE AND LONGITUDE LINES BEING REPRESENTED BY BORDER LINES AS SHOWN.

— DENOTES ONE INCH SPACES ON BORDER LINE OF ORIGINAL TRACING.



STATE OF WEST VIRGINIA
DEPARTMENT OF MINES
OIL AND GAS DIVISION

551

WELL RECORD

Permit No. TYL-622-A

~~Oil or Gas Well~~
(KIND)

Company The Manufacturers Light & Heat Company
Address 800 Union Trust Bldg., Pittsburgh, Pa.
Farm Irene C. Gorby Acres 14.75
Location (waters).....
Well No. 1-1528 Elev.....
District McElroy County Tyler
Claude H. Gorby, AGT.
R. D. 2 Address Sistersville, W. Va.
Mineral rights are owned by The Mfrs. Light & Heat Co.
800 Union Trust Bldg. Address Pittsburgh, Pa.
Drilling commenced.....
Drilling completed October 23, 1912
Date Shot From To
With

| Casing and Tubing | Used in Drilling | Left in Well | Packers |
|-------------------|------------------|--------------|-------------------------|
| Size | | | |
| 16 | | | Kind of Packer..... |
| 18 | | | |
| 10 | <u>145</u> | | Size of <u>3x6-5/8"</u> |
| 8 1/4 | <u>1045</u> | | |
| 6 1/2 | <u>1788</u> | | Depth set <u>2479</u> |
| 5 3/16 | | | |
| 3 | | | Perf. top..... |
| 2 | | | Perf. bottom..... |
| Liners Used | | | Perf. top..... |
| | | | Perf. bottom..... |

Open Flow /10ths Water in..... Inch
/10ths Merc. in..... Inch
Volume..... Cu. Ft.
Rock Pressure..... lbs..... hrs.
Oil..... bbls., 1st 24 hrs.
Fresh water..... feet..... feet
Salt water..... feet..... feet

CASING CEMENTED..... SIZE..... No. Ft..... Date
COAL WAS ENCOUNTERED AT 500 FEET 24 INCHES
..... FEET..... INCHES..... FEET..... INCHES
..... FEET..... INCHES..... FEET..... INCHES

| Formation | Color | Hard or Soft | Top | Bottom | Oil, Gas or Water | Depth Found | Remarks |
|-----------------|-------|--------------|------|--------|-------------------|-------------|---------|
| Pittsburgh Coal | | | 500 | 502 | | | |
| Sand | | | 575 | 625 | | | |
| Big Dunkard | | | 1025 | 1055 | | | |
| Gas Sand | | | 1150 | 1180 | | | |
| 1st. Salt Sand | | | 1220 | 1250 | | | |
| 2nd. Salt Sand | | | 1370 | 1440 | | | |
| 3rd. Salt Sand | | | 1450 | 1505 | | | |
| Sand | | | 1578 | 1608 | | | |
| Maxon Sand | | | 1648 | 1662 | | | |
| Red Rock | | | 1685 | 1750 | | | |
| Little Lime | | | 1752 | 1762 | | | |
| Pencil Cave | | | 1762 | 1768 | | | |
| Big Lime | | | 1768 | 1826 | | | |
| Big Injun Sand | | | 1826 | 2037 | | | |
| Gandy Sand | | | 2177 | 2260 | | | |
| Gordon Sand | | | 2606 | 2624 | | | |
| Pay Gas | | | 2613 | 2618 | | | |
| TOTAL DEPTH | | | 2639 | | | | |



Little Gas @ 1834 feet.

