

Latitude 39° 35'

Longitude 80° 55'

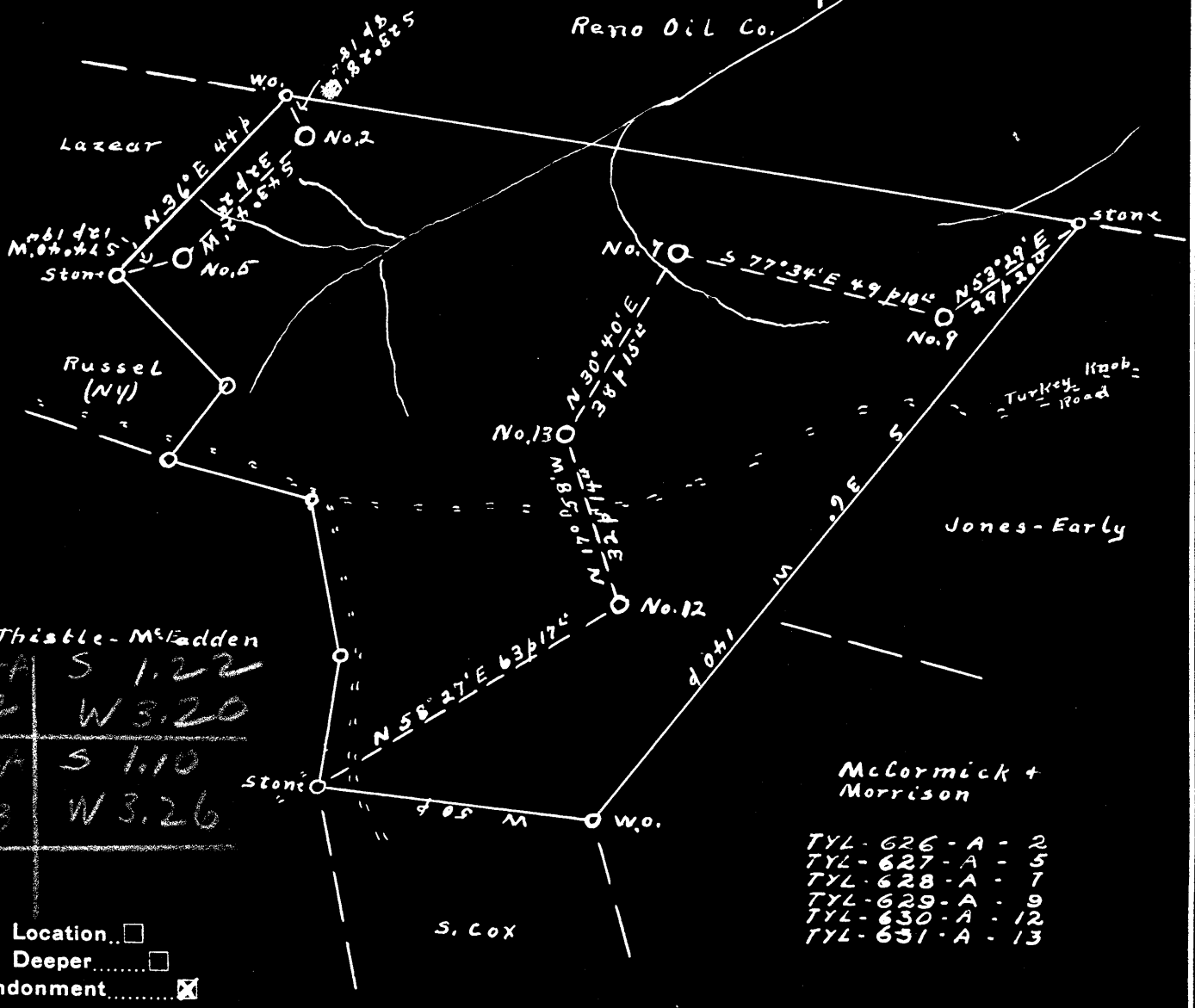


+++
+

627-A	S 1.07
#5	W 3.43
628-A	S 1.02
#7	W 3.19
620-A	S 1.07
#9	W 3.06

Reno Oil Co.

For 11 of Pole Cat Run



630-A	S 1.22
#12	W 3.20
631-A	S 1.10
#13	W 3.26

- TYL-626-A - 2
- TYL-627-A - 5
- TYL-628-A - 7
- TYL-629-A - 9
- TYL-630-A - 12
- TYL-631-A - 13

- New Location...
- Drill Deeper...
- Abandonment...

Company J.R. Bull
 Address Sistersville, W.Va.
 Farm J.R. Dunfee
 Tract 1 Acres 100 Lease No. 6091
 Well (Farm) No. 2, 5, 7, 9, 12, 13 Serial No. No. 2-948' No. 7-892' No. 12-1007' No. 5-991' No. 9-1068' No. 13-993'
 Elevation (Spirit Level) No. 5-991' No. 9-1068' No. 13-993'
 Quadrangle New Martinsville
 County Tyler District Lincoln
 Engineer Don L. Riggle
 Approved by George R. Clarke
 Engineer's Registration No. 102
 File No. Q+G-SP.11 Drawing No. 1391
 Date May 20, '48 Scale 1" = 30p

STATE OF WEST VIRGINIA
 DEPARTMENT OF MINES
 OIL AND GAS DIVISION
 CHARLESTON

WELL LOCATION MAP

FILE NO. _____

+ Denotes location of well on United States Topographic Maps, scale 1 to 62,500, latitude and longitude lines being represented by border lines as shown.

- Denotes one inch spaces on border line of original tracing.

J. R. DUNFEE NO. 2 WELL.

Lincoln District, Tyler County, W. Va. 626A
By Maurice Horowitz, 310 N. McKean St., Butler, Pa.
Abandoned under permit Tyl-.....-A?
On.....acres.
Elevation,' L.
Date of completion, etc., not given.
10" casing, 60'; 6 $\frac{1}{2}$ "", 1300'; all left in.
Oil well. Record to Dept. of Mines stamped April 26, 1950.
Record to RCT from Mrs. Griffith Sept. 9, 1950. Old File No. 548.

	Top.	Bottom.
Big Injun Sand	1708	- 1769

"All record shows."

