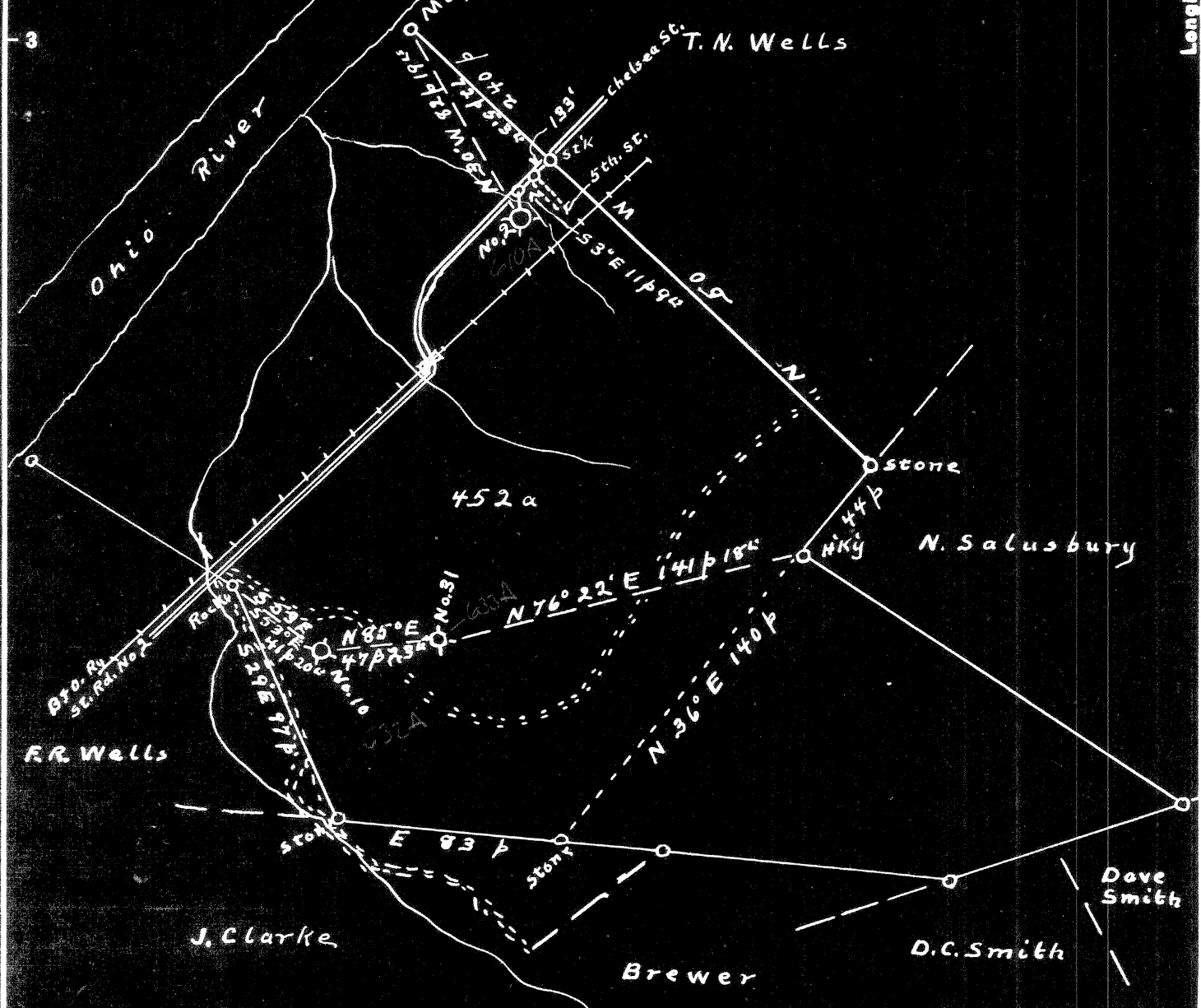
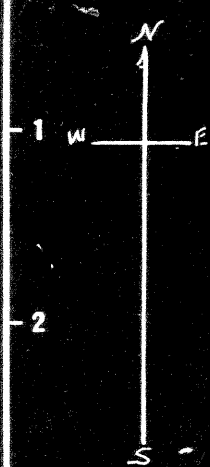


Latitude 39° 35'

Longitude 81° 00'



- New Location
- Drill Deeper
- Abandonment

Company J. R. Bull  
 Address Sistersville, W. Va.  
 Farm Eph Wells  
 Tract 1 Acres 452 Lease No. 6078  
 Well (Farm) No. 2-10+31 Serial No. No. 2-635 No. 31-776  
 Elevation (Spirit Level) No. 10-760  
 Quadrangle New Matamoras  
 County Tyler District Lincoln  
 Engineer Don L. Riggle  
 Approved by George R. Clarke  
 Engineer's Registration No. 102  
 File No. 046-SR. 11 Drawing No. 1386  
 Date May 5, '48 Scale 1" = 60 p

STATE OF WEST VIRGINIA  
 DEPARTMENT OF MINES  
 OIL AND GAS DIVISION  
 CHARLESTON

**WELL LOCATION MAP**

TYL - 610 - A - 2  
 FILE NO. TYL - 632 - A - 10  
 TYL - 633 - A - 31

+ Denotes location of well on United States Topographic Maps, scale 1 to 62,500, latitude and longitude lines being represented by border lines as shown.

- Denotes one inch spaces on border line of original tracing.

EPH. WELLS NO. 10 WELL.

6324

Lincoln District, Tyler County, W. Va.  
 By Maurice Horowitz, 310 N. McKean St., Butler, Pa.  
 Abandoned under permit Tyl-.....-A?  
 On.....acres.  
 Elevation, ..... ' L.  
 Drilling completed, date not given.  
 6 1/2" casing, 1303'.  
 Oil well. Record to Dept. of Mines stamped April 26, 1950.  
 Record to RCT from Mrs. Griffith Sept. 9, 1950. Old File No. 560.

	Top. Bottom.
Big Injun Sand	1540 - 1589

"All record shows."



STATE OF WEST VIRGINIA  
DEPARTMENT OF MINES  
OIL AND GAS DIVISION

560

Plot  
610-A

WELL RECORD

Permit No. TYL-632-A

Oil or Gas Well Oil  
(KIND)

Company Maurice Horowitz  
 Address 310 N. Mc Kean St Butler Penna  
 Farm EPH Wells Acres \_\_\_\_\_  
 Location (waters) \_\_\_\_\_  
 Well No. 10 Elev. \_\_\_\_\_  
 District Lincoln County Tyler  
 The surface of tract is owned in fee by \_\_\_\_\_  
 Address \_\_\_\_\_  
 Mineral rights are owned by \_\_\_\_\_  
 Address \_\_\_\_\_  
 Drilling commenced \_\_\_\_\_  
 Drilling completed \_\_\_\_\_  
 Date Shot \_\_\_\_\_ From \_\_\_\_\_ To \_\_\_\_\_  
 With \_\_\_\_\_  
 Open Flow \_\_\_\_\_ /10ths Water in \_\_\_\_\_ Inch  
 \_\_\_\_\_ /10ths Merc. in \_\_\_\_\_ Inch  
 Volume \_\_\_\_\_ Cu. Ft.  
 Rock Pressure \_\_\_\_\_ lbs. \_\_\_\_\_ hrs.  
 Oil \_\_\_\_\_ bbls., 1st 24 hrs.  
 Fresh water \_\_\_\_\_ feet \_\_\_\_\_ feet  
 Salt water \_\_\_\_\_ feet \_\_\_\_\_ feet

Casing and Tubing	Used in Drilling	Left in Well	Packers
Size			Kind of Packer
16			
13			
10			Size of
8 1/4			
6 5/8	1303	1303	Depth set
5 3/16			
3			Perf. top
2			Perf. bottom
Liners Used			Perf. top
			Perf. bottom

CASING CEMENTED \_\_\_\_\_ SIZE \_\_\_\_\_ No. Ft. \_\_\_\_\_ Date \_\_\_\_\_  
 COAL WAS ENCOUNTERED AT \_\_\_\_\_ FEET \_\_\_\_\_ INCHES  
 \_\_\_\_\_ FEET \_\_\_\_\_ INCHES FEET \_\_\_\_\_ INCHES  
 \_\_\_\_\_ FEET \_\_\_\_\_ INCHES FEET \_\_\_\_\_ INCHES

Formation	Color	Hard or Soft	Top	Bottom	Oil, Gas or Water	Depth Found	Remarks
Big Injun			1540	1589			All Record Shows

