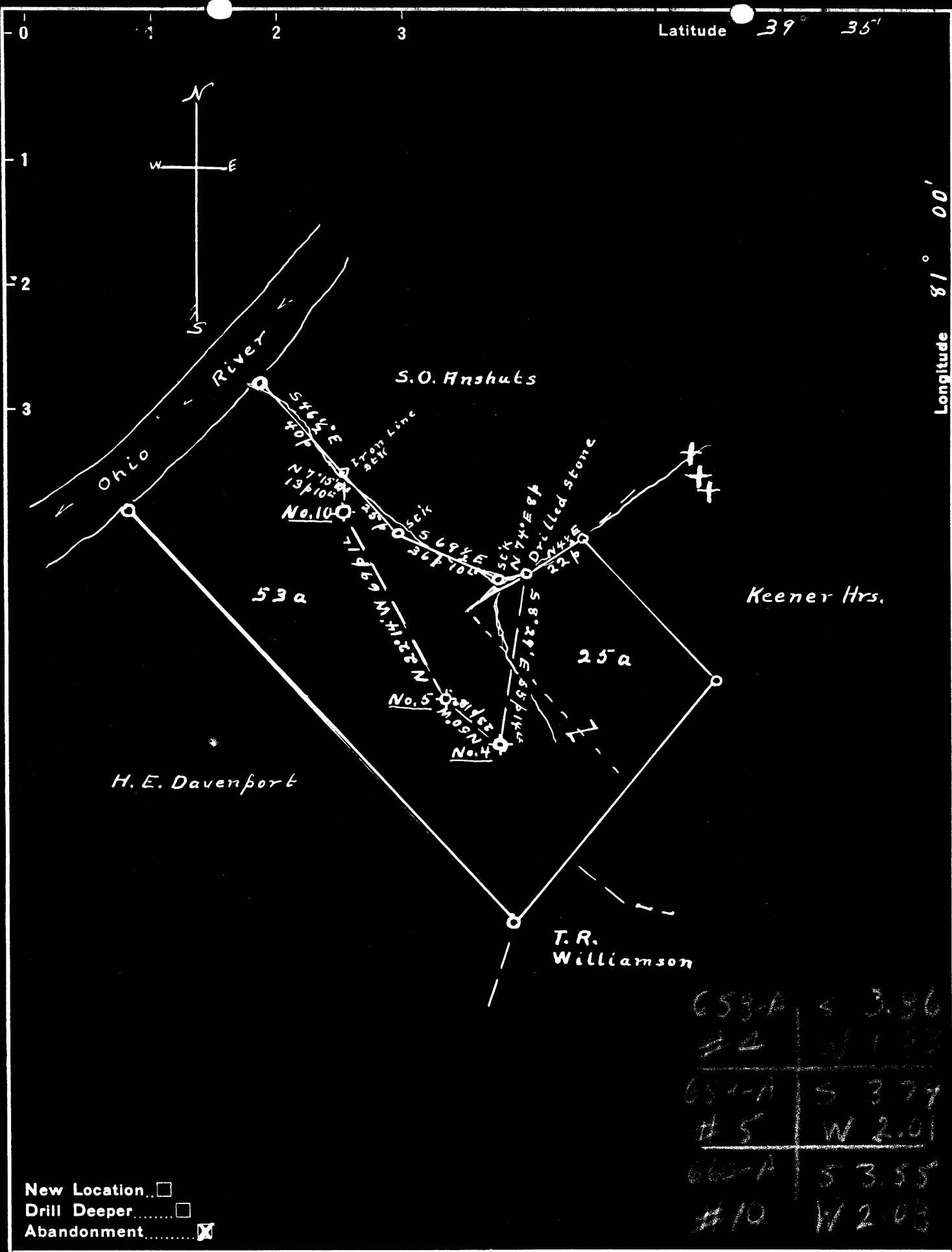


Latitude 39° 35'

Longitude 81° 00'



658-A	S	3.86
#4	W	1.82
659-A	S	3.74
#5	W	2.01
660-A	S	3.55
#10	W	2.03

New Location   
 Drill Deeper   
 Abandonment

Company J. R. Bull  
 Address Sistersville, W. Va.  
 Farm J. H. Davenport  
 Tract 1 Acres 53a Lease No. 6140  
 Well (Farm) No.'s 4-5-10 Serial No. No. 4-793' No. 10-628'  
 Elevation (Spirit Level) No. 5-857'  
 Quadrangle New Matamoras  
 County Tyler District Union  
 Engineer Don L. Riggle  
 Approved by George R. Clarke  
 Engineer's Registration No. 102  
 File No. 046-S.P.11 Drawing No. 1383  
 Date Apr 26, '48 Scale 1" = 40'

STATE OF WEST VIRGINIA  
 DEPARTMENT OF MINES  
 OIL AND GAS DIVISION  
 CHARLESTON

WELL LOCATION MAP  
JyL-658-A-#4  
 FILE NO. JyL-659-A-#5  
JyL-660-A-#10

+ Denotes location of well on United States Topographic Maps, scale 1 to 62,500, latitude and longitude lines being represented by border lines as shown.

- Denotes one inch spaces on border line of original tracing.

.....District, Tyler County, W. Va.  
Fisher Oil Co.  
Sistersville field.  
8 1/4" casing, 743'; 6 1/2", 1037'.

	Top.	Bottom.
1st pay (Big Injun)	1547	
Total depth		1600



STATE OF WEST VIRGINIA  
DEPARTMENT OF MINES  
OIL AND GAS DIVISION

677

ML-658A

WELL RECORD

Permit No. ML-658A

Oil or Gas Well ~~Oil~~ Gas Well (KIND)

Company Mourise Horowitz  
Address 310 N. McKean St. Butler Penna.  
Farm F & R. Davenport No. 4 Acres \_\_\_\_\_  
Location (waters) \_\_\_\_\_  
Well No. No. 4 Elev. \_\_\_\_\_  
District Lincoln County Tyler  
The surface of tract is owned in fee by \_\_\_\_\_  
Address \_\_\_\_\_  
Mineral rights are owned by \_\_\_\_\_  
Address \_\_\_\_\_  
Drilling commenced \_\_\_\_\_  
Drilling completed \_\_\_\_\_  
Date Shot \_\_\_\_\_ From \_\_\_\_\_ To \_\_\_\_\_  
With \_\_\_\_\_  
Open Flow \_\_\_\_\_ /10ths Water in \_\_\_\_\_ Inch  
\_\_\_\_\_ /10ths Merc. in \_\_\_\_\_ Inch  
Volume \_\_\_\_\_ Cu. Ft.  
Rock Pressure \_\_\_\_\_ lbs. \_\_\_\_\_ hrs.  
Oil \_\_\_\_\_ bbls., 1st 24 hrs.  
Fresh water \_\_\_\_\_ feet \_\_\_\_\_ feet  
Salt water \_\_\_\_\_ feet \_\_\_\_\_ feet

Casing and Tubing	Used in Drilling	Left in Well	Packers
Size			Kind of Packer
16			
13			
10			Size of
8 1/4			
6 5/8	1073	1073	Depth set
5 3/16			
3			Perf. top
2			Perf. bottom
Liners Used			Perf. top
			Perf. bottom

CASING CEMENTED \_\_\_\_\_ SIZE \_\_\_\_\_ No. Ft. \_\_\_\_\_ Date \_\_\_\_\_  
COAL WAS ENCOUNTERED AT \_\_\_\_\_ FEET \_\_\_\_\_ INCHES  
\_\_\_\_\_ FEET \_\_\_\_\_ INCHES FEET \_\_\_\_\_ INCHES  
\_\_\_\_\_ FEET \_\_\_\_\_ INCHES FEET \_\_\_\_\_ INCHES

Formation	Color	Hard or Soft	Top	Bottom	Oil, Gas or Water	Depth Found	Remarks
Injun			1547	No record			All that is given on record

