

Latitude 39° 30'

Longitude 81° 00'



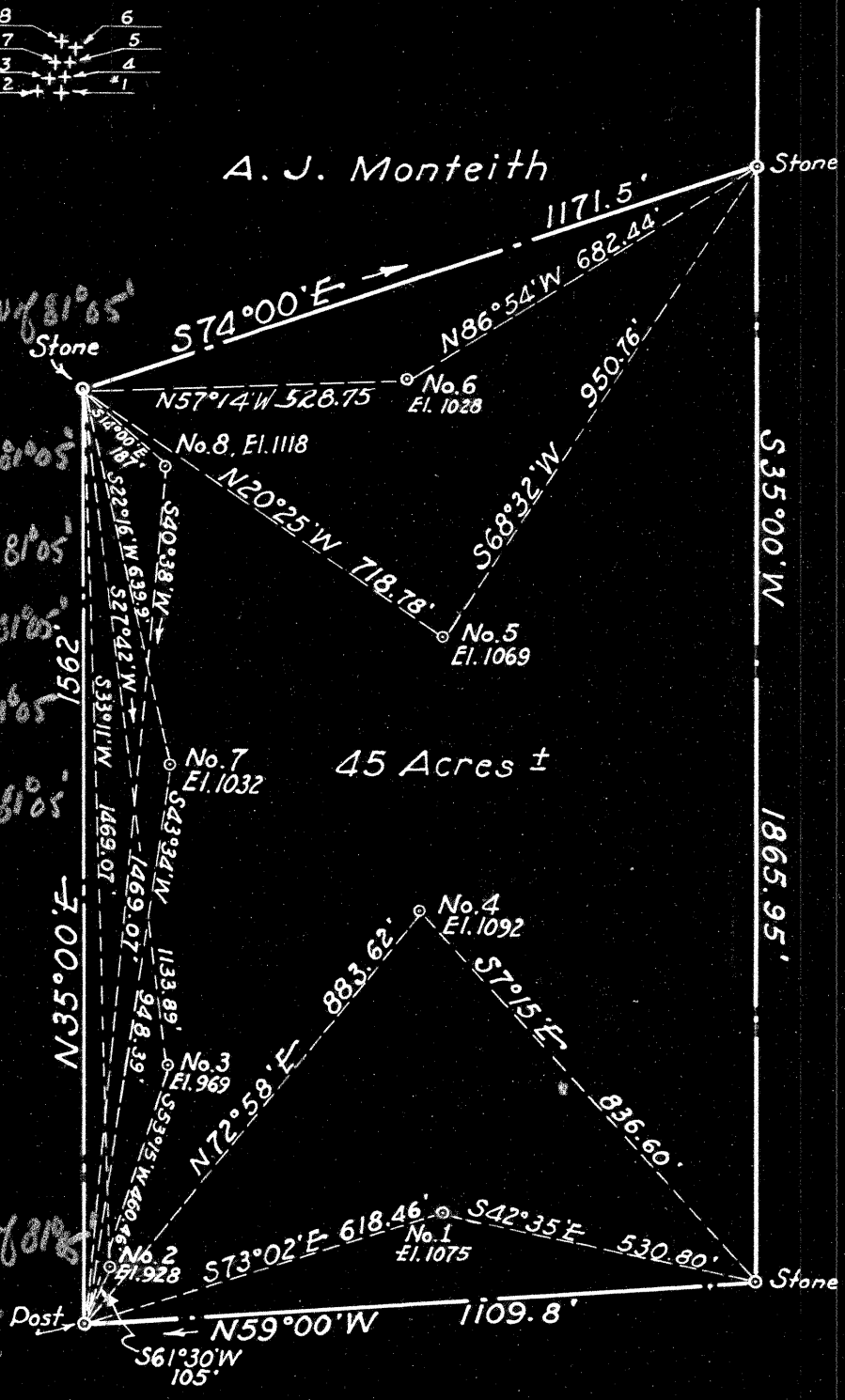
A. J. Monteith

661-A	S 1.78	0.19 W of 81°05'
#6	W 4.711	
663-A	S 2.04	
#1	W 4.79	0.28 W of 81°05'
664-A	S 2.02	
#2	W 4.91	0.90 W of 81°05'
665-A	S 1.96	
#3	W 4.85	0.32 W of 81°05'
666-A	S 1.94	
#4	W 4.76	0.24 W of 81°05'
667-A	S 1.87	
#5	W 4.73	0.21 W of 81°05'

D. H. WELLS

- JYL-661-A-#6
- JYL-663-A-#1
- JYL-664-A-#2
- JYL-665-A-#3
- JYL-666-A-#4
- JYL-667-A-#5
- JYL-668-A-#7
- JYL-669-A-#8

668-A	S 1.87	
#7	W 4.82	0.30 W of 81°05'
669-A	S 1.73	
#8	W 4.78	0.26 W of 81°05'



45 Acres ±

Blanche Wells

New Location

Drill Deeper

Abandonment

A. & S. Thistle

Company WISER OIL CO.

Address Sistersville, W. Va.

Farm NICHOLAS WELLS

Tract \_\_\_\_\_ Acres 45 Lease No. \_\_\_\_\_

Well (Farm) No. 6, 7 And 8 Serial No. \_\_\_\_\_

Elevation (Spirit Level) SEE MAP ABOVE

Quadrangle St. Marys

County Tyler District Union

Engineer L. G. Merrill

Engineer's Registration No. 152

File No. \_\_\_\_\_ Drawing No. \_\_\_\_\_

Date Sept. 18, 1950 Scale 1" = 300'

STATE OF WEST VIRGINIA  
DEPARTMENT OF MINES  
OIL AND GAS DIVISION  
CHARLESTON

### WELL LOCATION MAP

FILE NO. \_\_\_\_\_

+ Denotes location of well on United States Topographic Maps, scale 1 to 62,500, latitude and longitude lines being represented by border lines as shown.

- Denotes one inch spaces on border line of original tracing.



STATE OF WEST VIRGINIA  
DEPARTMENT OF MINES  
OIL AND GAS DIVISION

641

Ab 669-A

WELL RECORD

Permit No. \_\_\_\_\_ Oil or Gas Well oil  
(KIND)

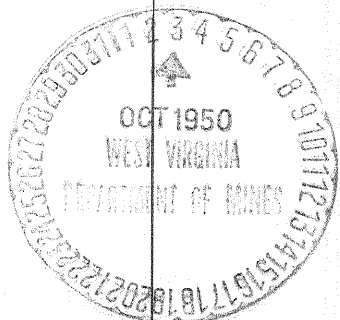
Company The Wiser Oil Company  
Address Sistersville, W. Va.  
Farm N.W. Wells Hrs. Acres 45  
Location (waters) \_\_\_\_\_  
Well No. 8 Elev. 1118  
District Union County Tyler  
The surface of tract is owned in fee by N.W. Wells Hrs.  
Address Bens Run, W.Va.  
Mineral rights are owned by N.W. Wells Hrs.  
Address Bens Run, W.Va.  
Drilling commenced March 5, 1923  
Drilling completed April 19, 1923  
Date Shot 4/30/23 From \_\_\_\_\_ To \_\_\_\_\_  
With \_\_\_\_\_  
Open Flow \_\_\_\_\_ /10ths Water in \_\_\_\_\_ Inch  
\_\_\_\_\_ /10ths Merc. in \_\_\_\_\_ Inch  
Volume \_\_\_\_\_ Cu. Ft.  
Rock Pressure \_\_\_\_\_ lbs. \_\_\_\_\_ hrs.  
Oil \_\_\_\_\_ bbls., 1st 24 hrs.  
Fresh water \_\_\_\_\_ feet \_\_\_\_\_ feet  
Salt water \_\_\_\_\_ feet \_\_\_\_\_ feet

Casing and Tubing	Used in Drilling	Left in Well	Packers
Size			
16			Kind of Packer
13			
10	<u>102'5" pulled</u>		Size of
8 1/4	<u>1042</u>	<u>"</u>	
6 3/4	<u>1775</u>		Depth set
5 3/16			
3			Perf. top
2" <u>4 1/2"</u>	<u>1904</u>		Perf. bottom
Liners Used			Perf. top
			Perf. bottom

CASING CEMENTED \_\_\_\_\_ SIZE \_\_\_\_\_ No. Ft. \_\_\_\_\_ Date \_\_\_\_\_

COAL WAS ENCOUNTERED AT \_\_\_\_\_ FEET \_\_\_\_\_ INCHES  
\_\_\_\_\_ FEET \_\_\_\_\_ INCHES \_\_\_\_\_ FEET \_\_\_\_\_ INCHES  
\_\_\_\_\_ FEET \_\_\_\_\_ INCHES \_\_\_\_\_ FEET \_\_\_\_\_ INCHES

Formation	Color	Hard or Soft	Top	Bottom	Oil, Gas or Water	Depth Found	Remarks
Red rock	red	soft	0	125			
sand			125	185			
Red rock			185	270			
Slate			270	275			
Red Rock			275	348			
Sand			348	363			
Red rock			363	390			
White lime			390	425			
Sand		hard	425	437			
Red rock			437	443			
Red lime		hard	443	530			
Red rock			530	570			
Lime		hard	570	582			
Red Rock			582	612			
Lime	white		612	630			
Lime			630	652			
Red Rock			652	665			
Sand lime		hard	665	675			
Red Rock			675	682			
White lime			682	750			
Big Red			750	855			
Sandy lime			855	895			
Red rock			895	950			
Lime			950	995			
Red Rock			995	1030			
2nd Cow Run			1030	1050			
Slate	light		1050	1080			
Slate	dark		1080	1125			
Sand			1125	1160			
Slate	light		1160	1210			
Sand			1210	1310			
Slate	dark		1310	1425			
Sand			1425	1440			
Slate	dark		1440	1482			
2nd Salt	sand gray		1482	1532			
Slate			1532	1537			
Sand			1537	1665			
			1665	1735			
			1690				



(Over)

NOV 28 1951

Formation	Color	Hard or Soft	Top	Bottom	Oil, Gas or Water	Depth Found	Remarks
Slate	dark		1735	1740			
Lime			1740	1845			
Keener			1845	1860			
Slate			1860	1889			
Injun			1889	1912	oil	1890-95	
2nd pay			1901	1907			
Total Depth			1912				

118

Date \_\_\_\_\_, 19\_\_\_\_

APPROVED THE WISER OIL COMPANY, Owner

By Paul H. Kunschmidt  
President (Title)