

0

1

2

3

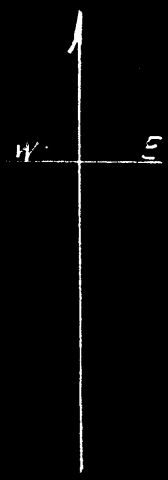
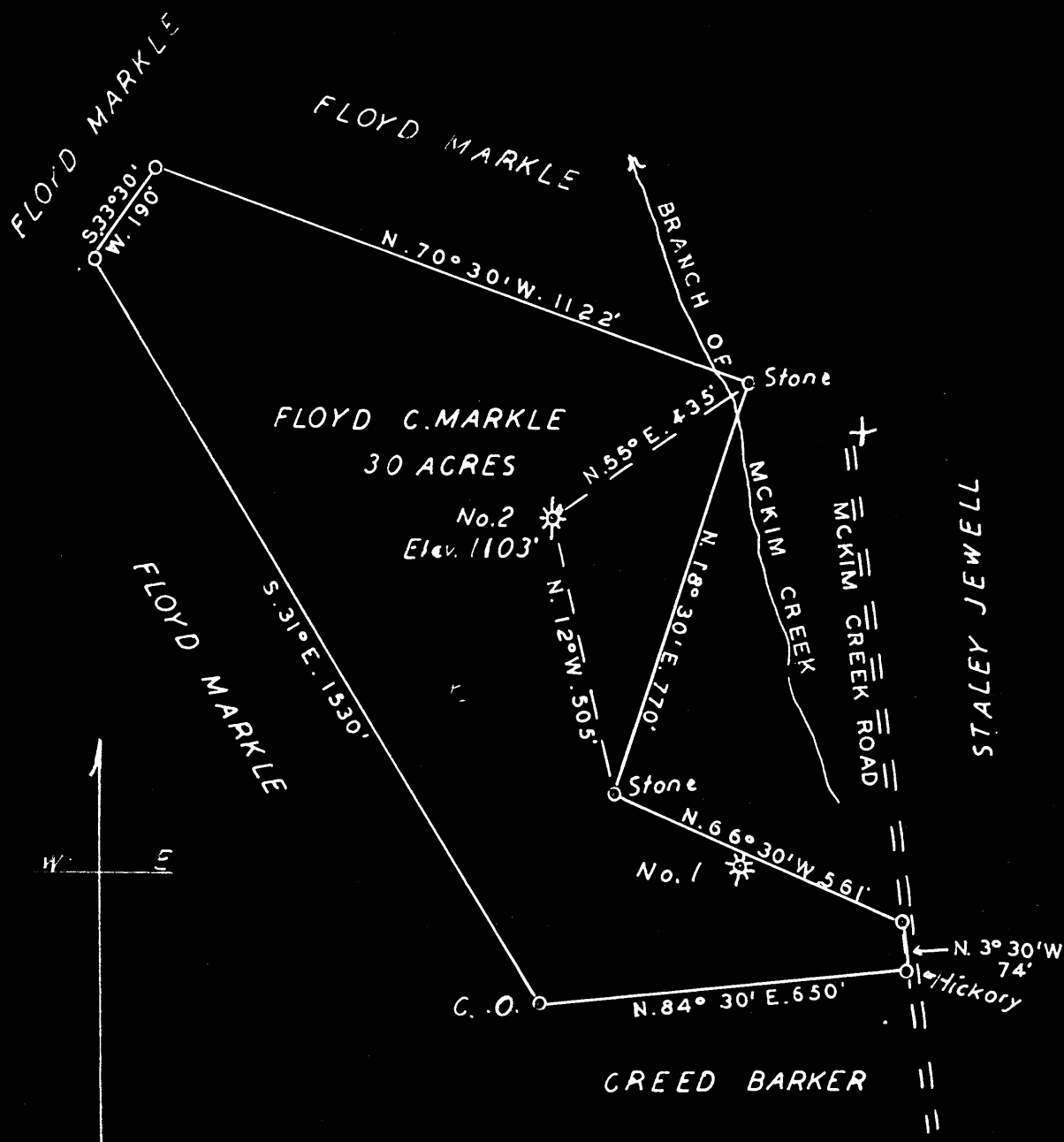
Latitude 39° 25'

1

2

3

Longitude 81° 55'



S 4.43  
W 1.87

New Location...   
 Drill Deeper...   
 Abandonment...

Company ROY W. CONFER  
 C/O Homer W. Myers, Box 27, Pike, W. Va.  
 Address \_\_\_\_\_  
 Farm FLOYD C. MARKLE  
 Tract 5 Acres 30 Lease No. \_\_\_\_\_  
 Well (Farm) No. 2 Serial No. \_\_\_\_\_  
 Elevation (Spirit Level) 1103' 00"  
 Quadrangle WEST UNION  
 County TYLER District MEADE  
 Surveyed by Homer W. Myers  
 Engineer George R. Colashe  
 Engineer's Registration No. 102  
 File No. \_\_\_\_\_ Drawing No. \_\_\_\_\_  
 Date NOV. 6, 1950 Scale 1" = 300'

STATE OF WEST VIRGINIA  
 DEPARTMENT OF MINES  
 OIL AND GAS DIVISION  
 CHARLESTON

**WELL LOCATION MAP**  
 FILE NO. JYL-678-A

+ Denotes location of well on United States Topographic Maps, scale 1 to 62,500, latitude and longitude lines being represented by border lines as shown.  
 - Denotes one inch spaces on border line of original tracing.

"IMPERIAL" TRACING CLOTH  
 K & E CO., N. Y.