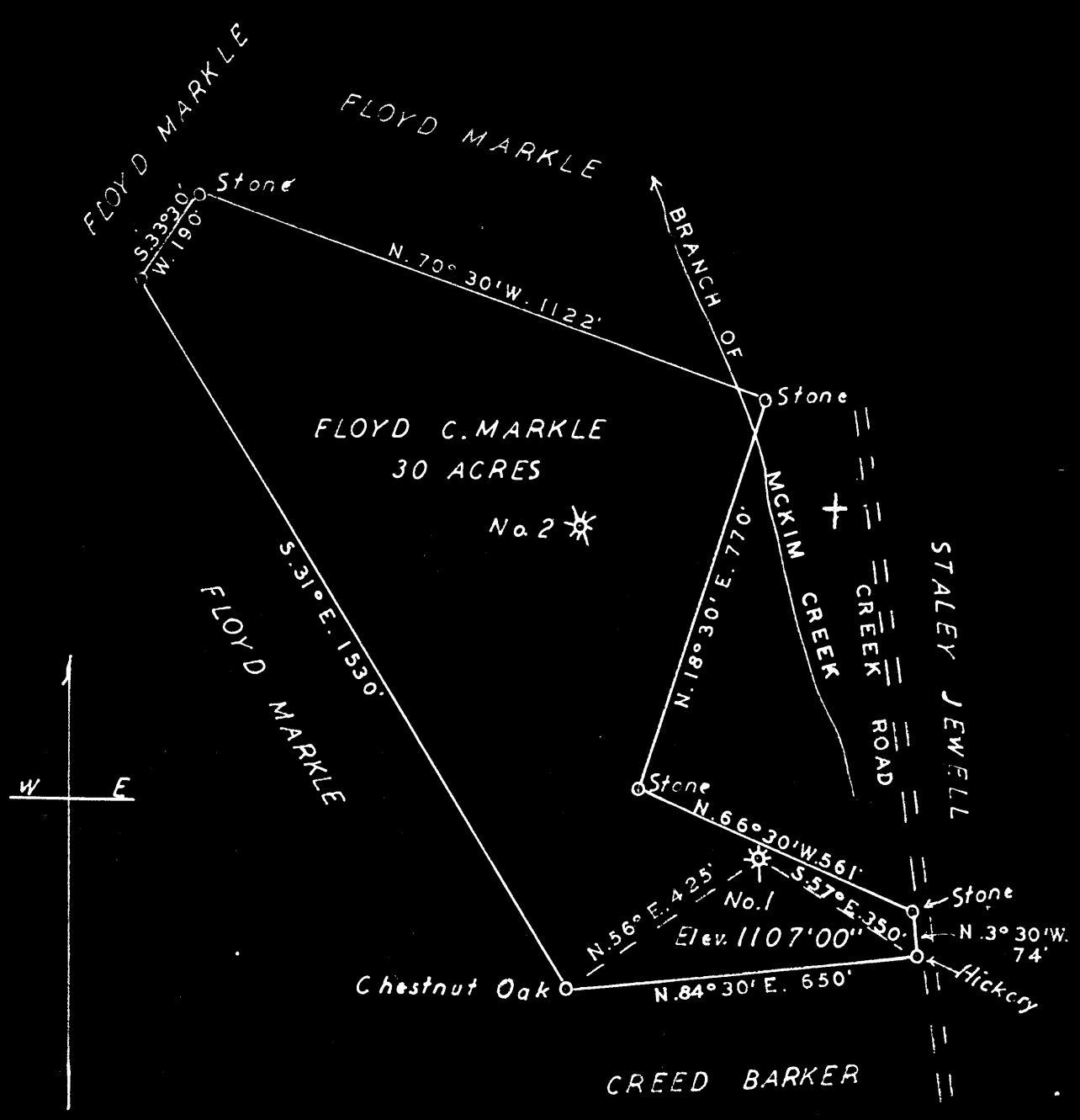


Latitude 39° 25'

Longitude 80° 55'



S 7.82
W 2.07

New Location
 Drill Deeper
 Abandonment

Company ROY W. CONFER
 C/O Homer W. Myers, Box 27, Pike W. Va.
 Address _____
 Farm FLOYD C. MARKLE
 Tract 5 Acres 30 Lease No. _____
 Well (Farm) No. 1 Serial No. _____
 Elevation (Spirit Level) 1107' 00"
 Quadrangle WEST UNION
 County TYLER District MEADE
 Surveyed by Homer W. Myers
 Engineer George R. Glashe
 Engineer's Registration No. 102
 File No. _____ Drawing No. _____
 Date NOV. 9, 1950 Scale 1" = 300'

STATE OF WEST VIRGINIA
 DEPARTMENT OF MINES
 OIL AND GAS DIVISION
 CHARLESTON

WELL LOCATION MAP
 FILE NO. JYL-679-A

+ Denotes location of well on United States Topographic Maps, scale 1 to 62,500, latitude and longitude lines being represented by border lines as shown.

- Denotes one inch spaces on border line of original tracing.

FLOYD MARKEL NO. 1 WELL.

Gal. No. 57 (359)

70168

~~6048~~

Meade District, Tyler County, W. Va.
Midland Oil & Gas Co.
Elevation, 1153'.
Oil well.
On Ritchie-Tyler boundary line.

Tyler-679A