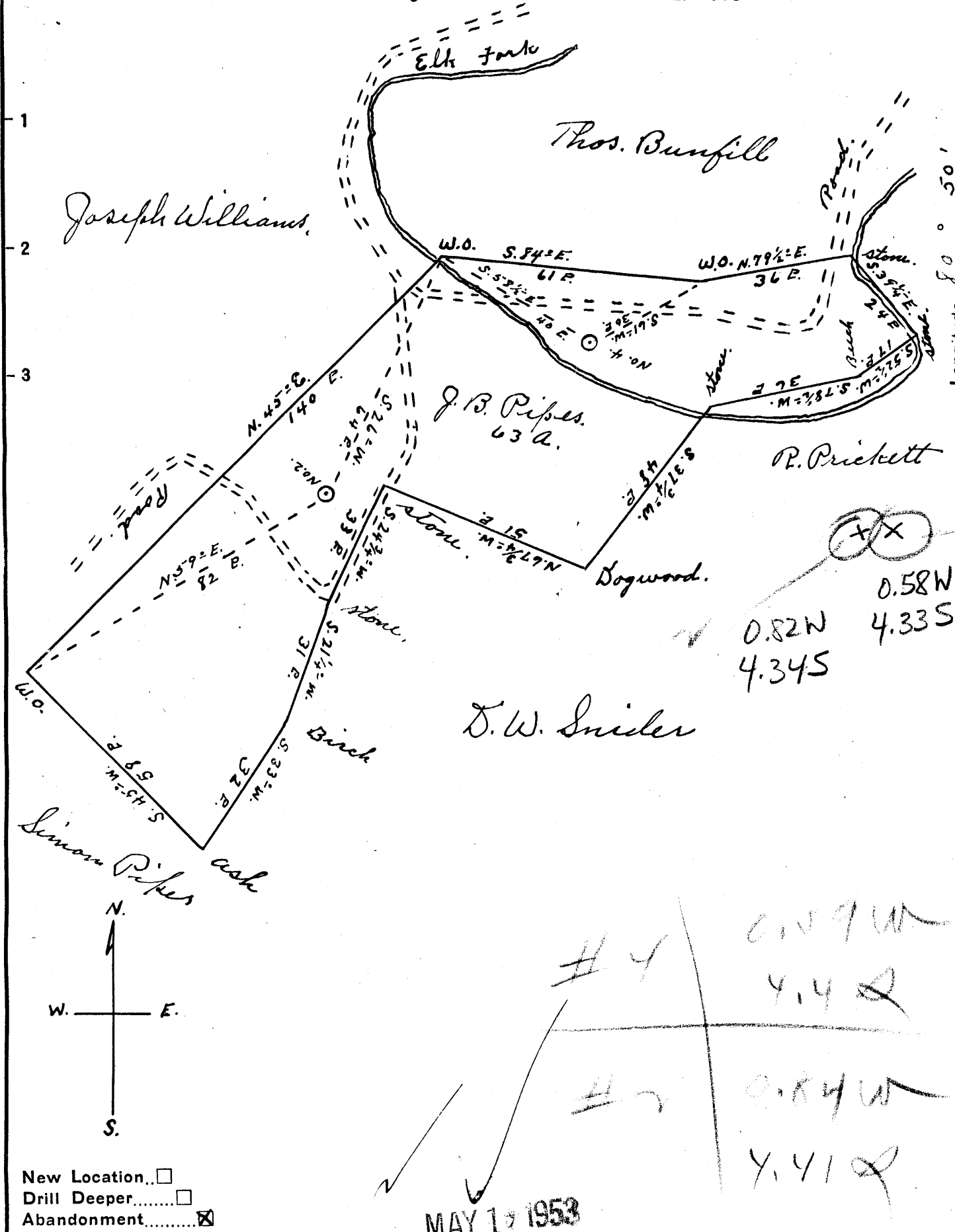


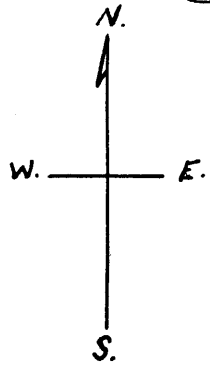
Latitude 39° 35'

Longitude 80° 50'



X  
 0.58W  
 4.33S  
 0.82W  
 4.34S

#4  
 0.09W  
 4.42  
 #2  
 0.84W  
 4.412



New Location...   
 Drill Deeper...   
 Abandonment...

MAY 17 1953

Company Reno Oil Company  
 Address Sistersville W. Va.  
 Farm J. B. Pipes  
 Tract \_\_\_\_\_ Acres 63 Lease No. \_\_\_\_\_  
 Well (Farm) No. 274 Serial No. \_\_\_\_\_  
 Elevation (Spirit Level) No. 2, 820. No 4, 740  
 Quadrangle New Martinsville  
 County Tyler District Ellsworth  
 Engineer Robert R. Anderson  
By Jno Triplett, Surveyor.  
 Engineer's Registration No. 296  
 File No. \_\_\_\_\_ Drawing No. \_\_\_\_\_  
 Date Nov. 10 1952 Scale 1" = 30 P.

STATE OF WEST VIRGINIA  
 DEPARTMENT OF MINES  
 OIL AND GAS DIVISION  
 CHARLESTON  
**WELL LOCATION MAP**  
 FILE NO. JYL-828-A-#4  
JYL-829-A-#2  
 + Denotes location of well on United States Topographic Maps, scale 1 to 62,500, latitude and longitude lines being represented by border lines as shown.  
 - Denotes one inch spaces on border line of original tracing.

Ellsworth District, Tyler County, W. Va.  
 Tyler Oil Co.  
 Elevation, 875'.  
 Oil well.  
 At Pollard, on Elk Fork.  
 Shown on 6-G, New Martinsville Quadrangle.

	Top.	Bottom.
Coal (probably Uniontown?)	280	
Cow Run Sand (Lower Little Dunkard--this sand is not the 1st Cow Run of Ohio)	885	
Salt Sand (Lower Gas)	1237	
Big Lime	1695	- 1780
Big Injun Sand (1st pay, 1784')	1780	

"Keener production from Tyler County viewpoint".

STATE OF WEST VIRGINIA  
DEPARTMENT OF MINES  
OIL AND GAS DIVISION

733

WELL RECORD

Permit No. *879-A*

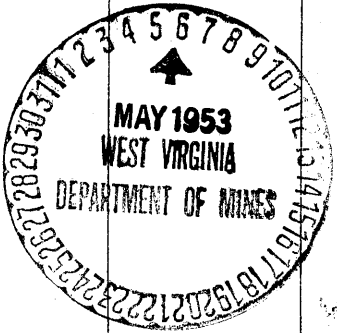
Oil or Gas Well Oil  
(Kind)

Company Reno Oil Company  
 Address Sistersville, W. Va.  
 Farm J. D. Pipes Acres \_\_\_\_\_  
 Location (waters) \_\_\_\_\_  
 Well No. Two Elev. 820'  
 District Ellsworth County Tyler  
 The surface of tract is owned in fee by Pipes Heirs  
 Address \_\_\_\_\_  
 Mineral rights are owned by \_\_\_\_\_  
 Address \_\_\_\_\_  
 Drilling commenced \_\_\_\_\_  
 Drilling completed \_\_\_\_\_  
 Date shot \_\_\_\_\_ Depth of shot \_\_\_\_\_  
 Open Flow /10ths Water in \_\_\_\_\_ Inch  
 /10ths Merc. in \_\_\_\_\_ Inch  
 Volume \_\_\_\_\_ Cu. Ft.  
 Rock Pressure \_\_\_\_\_ lbs. \_\_\_\_\_ hrs.  
 Oil \_\_\_\_\_ bbls., 1st 24 hrs.  
 Fresh water \_\_\_\_\_ feet \_\_\_\_\_ feet  
 Salt water \_\_\_\_\_ feet \_\_\_\_\_ feet

Casing and Tubing	Used in Drilling	Left in Well	Packers
Size			Kind of Packer
16			
13			
10			Size of
8 1/4	950	950	
6 5/8	1,698	1698	Depth set
5 3/16			
3			Perf. top
2			Perf. bottom
Liners Used			Perf. top
			Perf. bottom

CASING CEMENTED \_\_\_\_\_ SIZE \_\_\_\_\_ No. Ft. \_\_\_\_\_ Date \_\_\_\_\_  
 COAL WAS ENCOUNTERED AT \_\_\_\_\_ FEET \_\_\_\_\_ INCHES  
 \_\_\_\_\_ FEET \_\_\_\_\_ INCHES \_\_\_\_\_ FEET \_\_\_\_\_ INCHES  
 \_\_\_\_\_ FEET \_\_\_\_\_ INCHES \_\_\_\_\_ FEET \_\_\_\_\_ INCHES

Formation	Color	Hard or Soft	Top	Bottom	Oil, Gas or Water	Depth Found	Remarks
Cow Run Sand			885'				
Salt Sand			1237				
Line Stone			1695				
Big Injun Sand			1780				
Pay			1784				
Total Depth			1803				



May 5th, 1953.  
 RENO OIL COMPANY,  
 BY Arthur Davis  
 Asst. Treas.