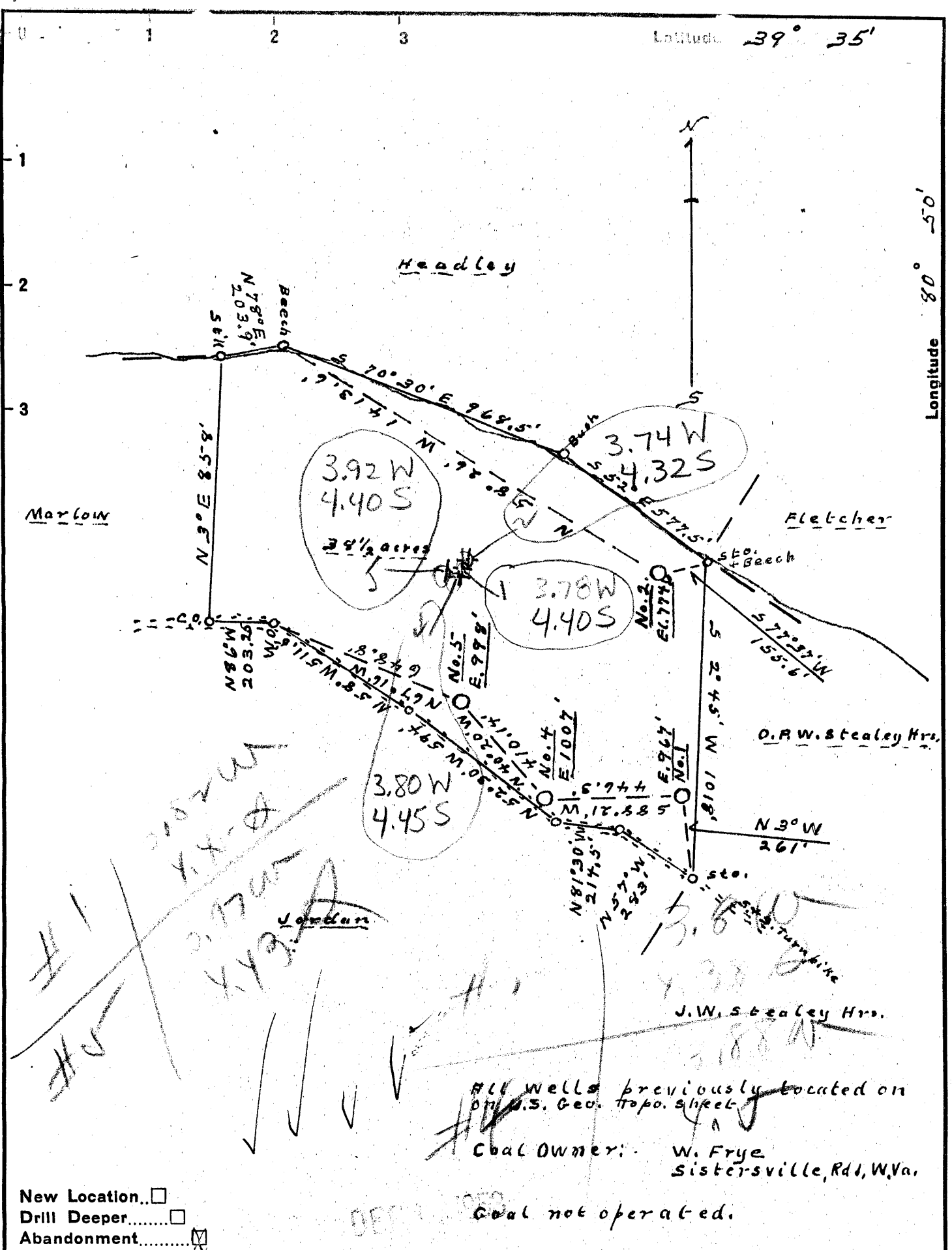


Latitude 39° 35'

Longitude 80° 50'



New Location...   
 Drill Deeper.....   
 Abandonment.....

All wells previously located on  
 U.S. Geo. topo. sheet  
 Coal Owner: W. Frye  
 Sistersville, Rdt, W. Va.  
 Coal not operated.

Company Melrose Oil & Gas Co.  
 Address Sistersville, W. Va.  
 Farm H.T. Marlow Hrs.  
 Tract 1 Acres 38 1/2 Lease No. 6C  
 Well (Farm) No. 1-2-4+5 Serial No. No. 1-967' No. 4-1007'  
 Elevation (Spirit Level) No. 2-774' No. 5-998'  
 Quadrangle New Martinsville  
 County Tyler District Ellsworth  
 Engineer J.M. Cochran  
 Engineer's Registration No. 60, 500000  
 File No. \_\_\_\_\_ Drawing No. \_\_\_\_\_  
 Date 2-29-52 Scale 1" = 400'

STATE OF WEST VIRGINIA  
 DEPARTMENT OF MINES  
 OIL AND GAS DIVISION  
 CHARLESTON

WELL LOCATION MAP  
 FILE NO. JYL-805-A-#4  
JYL-833-A-#2

+ Denotes location of well on United States Topographic Maps, scale 1 to 62,500, latitude and longitude lines being represented by border lines as shown.  
 - Denotes one inch spaces on border line of original tracing.

A.T. MARLOW HRS. NO. 5, 4 & 2 - MELROSE O. & G. CO. - TYL-805A & 833A



STATE OF WEST VIRGINIA  
DEPARTMENT OF MINES  
OIL AND GAS DIVISION

738

WELL RECORD

*Sistersville*  
Quadrangle

Permit No. *893-A*

Oil or Gas Well \_\_\_\_\_  
(KIND)

Company Malrose Oil & Gas Company  
 Address Sistersville, W. Va.  
 Farm A. T. Marlow Hrs. Acres 38 1/2  
 Location (waters) \_\_\_\_\_  
 Well No. 2 Elev. 774'  
 District Ellsworth County Tyler  
 The surface of tract is owned in fee by \_\_\_\_\_  
 Address \_\_\_\_\_  
 Mineral rights are owned by \_\_\_\_\_  
 Address \_\_\_\_\_  
 Drilling commenced \_\_\_\_\_  
 Drilling completed \_\_\_\_\_  
 Date Shot \_\_\_\_\_ From \_\_\_\_\_ To \_\_\_\_\_  
 With \_\_\_\_\_  
 Open Flow \_\_\_\_\_ /10ths Water in \_\_\_\_\_ Inch  
 \_\_\_\_\_ /10ths Merc. in \_\_\_\_\_ Inch  
 Volume \_\_\_\_\_ Cu. Ft.  
 Rock Pressure \_\_\_\_\_ lbs. \_\_\_\_\_ hrs.  
 Oil \_\_\_\_\_ bbls., 1st 24 hrs.  
 Fresh water \_\_\_\_\_ feet \_\_\_\_\_ feet  
 Salt water \_\_\_\_\_ feet \_\_\_\_\_ feet

Casing and Tubing	Used in Drilling	Left in Well	Packers
Size			Kind of Packer
16			
13			
10			Size of
8 1/4			
6 1/2	<u>1150'</u>	<u>1150'</u>	Depth set
5 3/16			
3			Perf. top
2			Perf. bottom
Liners Used			Perf. top
			Perf. bottom

CASING CEMENTED \_\_\_\_\_ SIZE \_\_\_\_\_ No. Ft. \_\_\_\_\_ Date \_\_\_\_\_  
 COAL WAS ENCOUNTERED AT \_\_\_\_\_ FEET \_\_\_\_\_ INCHES  
 \_\_\_\_\_ FEET \_\_\_\_\_ INCHES FEET \_\_\_\_\_ INCHES  
 \_\_\_\_\_ FEET \_\_\_\_\_ INCHES FEET \_\_\_\_\_ INCHES

Formation	Color	Hard or Soft	Top	Bottom	Oil, Gas or Water	Depth Found	Remarks
Salt Sands			<u>850</u>	<u>1015</u>			
Hurry Up Sand			<u>1065</u>				
Marion Sand			<u>1120</u>	<u>1450</u>	<u>Big Lime 1578'</u>		
Keener			<u>1638</u>	<u>1643</u>			
Total Depth				<u>1664</u>			