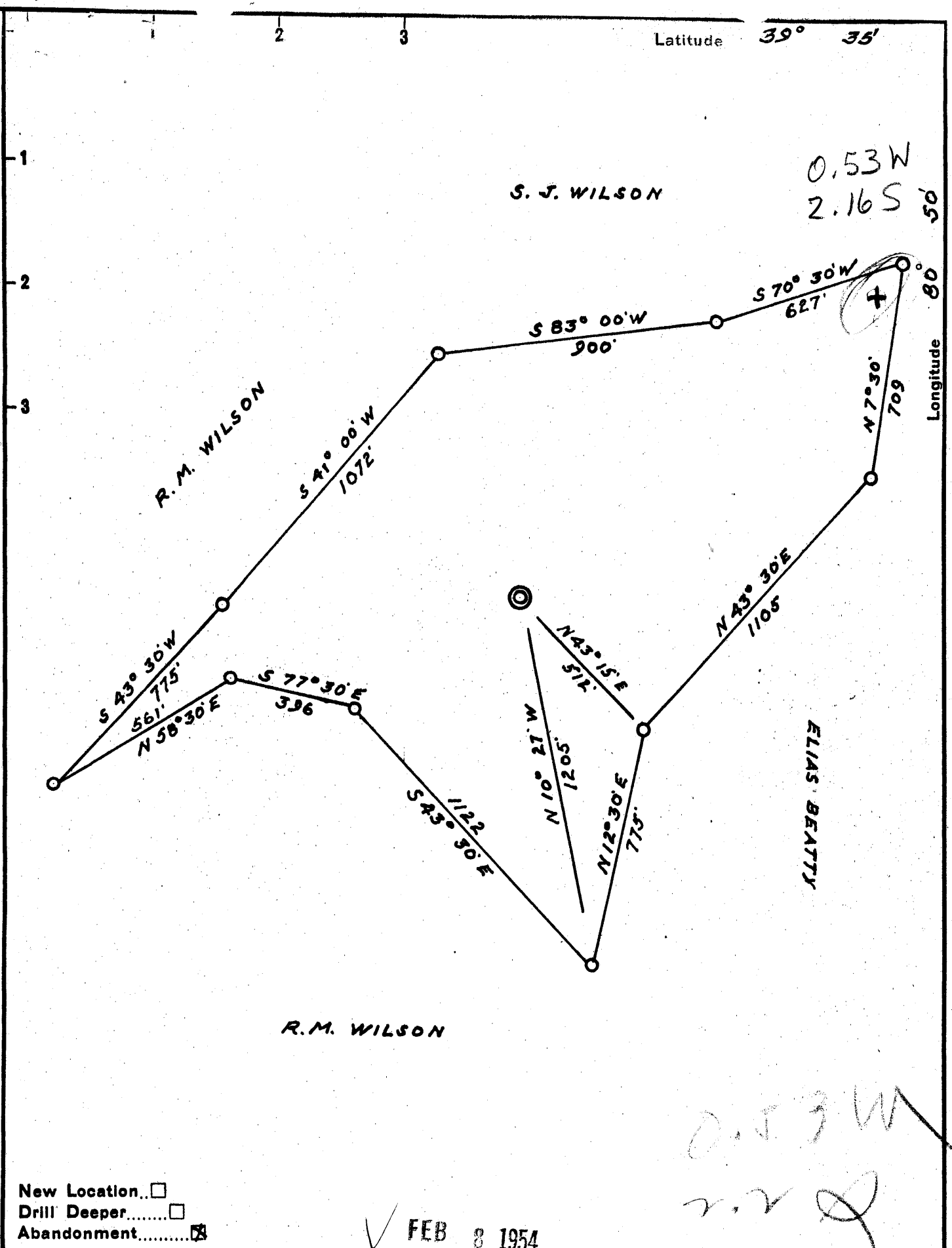


Latitude 39° 35'



New Location...   
 Drill Deeper.....   
 Abandonment.....

✓ FEB 8 1954

0.53 W  
2.22

Company DANIEL HENTHORN  
 Address R.F.D. SISTERSVILLE W.Va.  
 Farm S.J. WILSON  
 Tract \_\_\_\_\_ Acres 60 Lease No. \_\_\_\_\_  
 Well (Farm) No. 2 Serial No. \_\_\_\_\_  
 Elevation (Spirit Level) 928  
 Quadrangle NEW MARTINSVILLE  
 County TYLER District ELLSWORTH  
 Engineer G.L. MCINTIRE  
 Engineer's Registration No. 1187  
 File No. \_\_\_\_\_ Drawing No. \_\_\_\_\_  
 Date 1/23/54 Scale 1" = 400'

STATE OF WEST VIRGINIA  
 DEPARTMENT OF MINES  
 OIL AND GAS DIVISION  
 CHARLESTON

WELL LOCATION MAP  
 FILE NO. JYL-834-A

+ Denotes location of well on United States Topographic Maps, scale 1 to 62,500, latitude and longitude lines being represented by border lines as shown.  
 - Denotes one inch spaces on border line of original tracing.

S.J. WILSON No. 2 -

DANIEL HENTHORN -

TYL-834-A



STATE OF WEST VIRGINIA  
DEPARTMENT OF MINES  
OIL AND GAS DIVISION

744

WELL RECORD

Permit No. 741-834-A

Oil or Gas Well (KIND)

Company James Hawthorn  
Address 230 - Martinsville, W.Va.  
Farm S. G. Wilson Acres 60  
Location (waters) W. of Pen.  
Well No. 2 Elev. 928  
District Ellsworth County Zyle  
The surface of tract is owned in fee by New Martinsville Address W. Va.  
Mineral rights are owned by \_\_\_\_\_  
Address \_\_\_\_\_

| Casing and Tubing | Used in Drilling | Left in Well   | Packers                         |
|-------------------|------------------|----------------|---------------------------------|
| Size              |                  |                | Kind of Packer                  |
| 16                |                  |                |                                 |
| 13                |                  |                |                                 |
| 10                | <u>200</u>       | <u>200</u>     | Size of                         |
| 8 3/4             | <u>1275</u>      | <u>1275</u>    | Depth set                       |
| 6 5/8             |                  |                |                                 |
| 5 3/16            |                  |                |                                 |
| 3                 |                  |                | Perf. top                       |
| <u>2 5/8</u>      | <u>liner</u>     | <u>570 ft.</u> | Perf. bottom <u>Set at 1985</u> |
| Liners Used       | <u>5 3/8</u>     | <u>200 ft.</u> | Perf. top <u>Set at 1985</u>    |
|                   |                  |                | Perf. bottom                    |

Drilling commenced \_\_\_\_\_  
Drilling completed \_\_\_\_\_  
Date Shot \_\_\_\_\_ From \_\_\_\_\_ To \_\_\_\_\_  
With \_\_\_\_\_  
Open Flow \_\_\_\_\_ /10ths Water in \_\_\_\_\_ Inch  
\_\_\_\_\_ /10ths Merc. in \_\_\_\_\_ Inch  
Volume \_\_\_\_\_ Cu. Ft.  
Rock Pressure \_\_\_\_\_ lbs. \_\_\_\_\_ hrs.  
Oil \_\_\_\_\_ bbls., 1st 24 hrs.  
Fresh water \_\_\_\_\_ feet \_\_\_\_\_ feet  
Salt water \_\_\_\_\_ feet \_\_\_\_\_ feet

CASING CEMENTED \_\_\_\_\_ SIZE \_\_\_\_\_ No. Ft. \_\_\_\_\_ Date \_\_\_\_\_  
COAL WAS ENCOUNTERED AT \_\_\_\_\_ FEET \_\_\_\_\_ INCHES  
\_\_\_\_\_ FEET \_\_\_\_\_ INCHES \_\_\_\_\_ FEET \_\_\_\_\_ INCHES  
\_\_\_\_\_ FEET \_\_\_\_\_ INCHES \_\_\_\_\_ FEET \_\_\_\_\_ INCHES

| Formation | Color | Hard or Soft | Top         | Bottom      | Oil, Gas or Water | Depth Found | Remarks |
|-----------|-------|--------------|-------------|-------------|-------------------|-------------|---------|
|           |       |              | <u>1180</u> | <u>1310</u> |                   |             |         |
|           |       |              | <u>1310</u> | <u>1900</u> |                   |             |         |
|           |       |              | <u>1900</u> | <u>1970</u> |                   |             |         |
|           |       |              | <u>1970</u> | <u>2040</u> |                   |             |         |
|           |       |              |             |             |                   |             |         |
|           |       |              |             |             |                   |             |         |
|           |       |              |             |             |                   |             |         |
|           |       |              |             |             |                   |             |         |
|           |       |              |             |             |                   |             |         |
|           |       |              |             |             |                   |             |         |



(Over)

NOV 12 1954