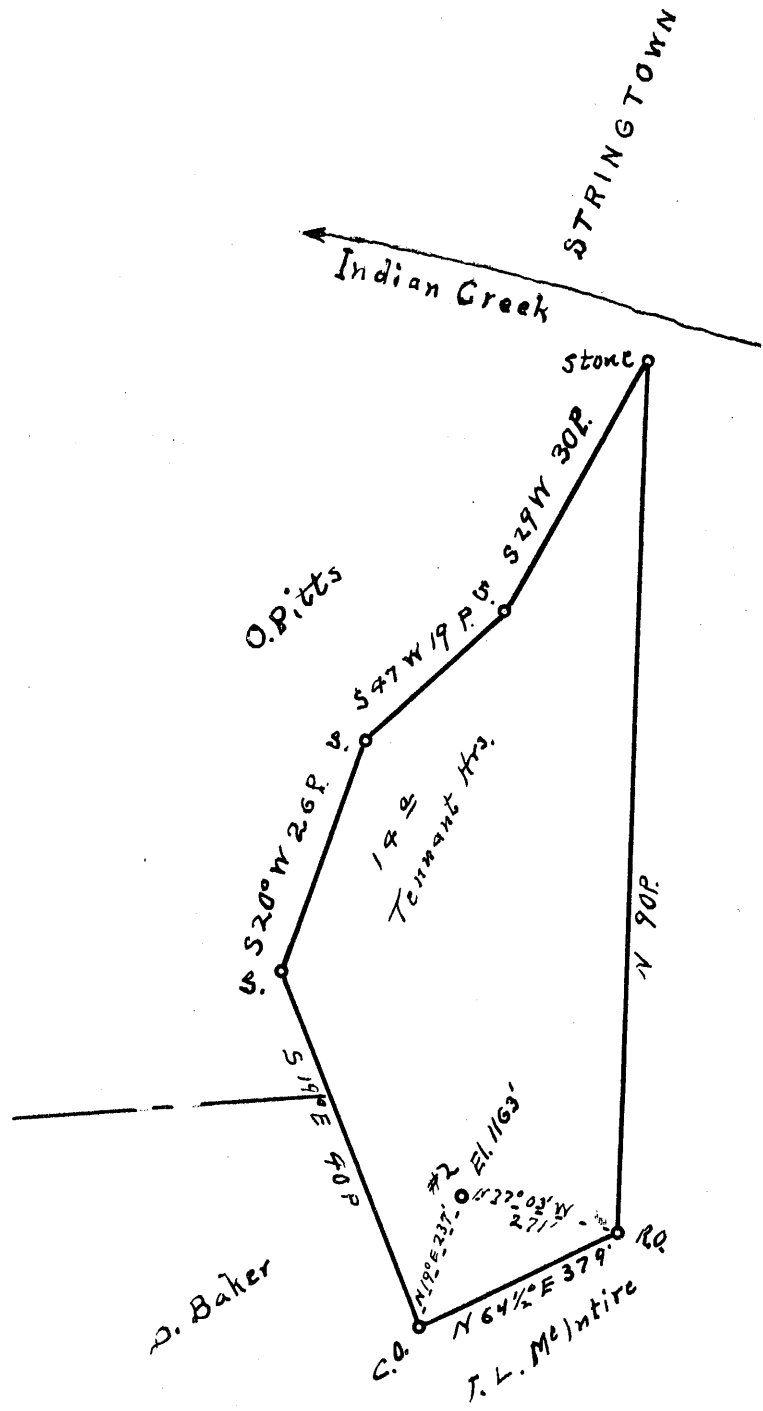


Latitude 39° 30'

Longitude 80° 40'

1  
2  
3



⊕ 1.57 N  
4.08 S

J. Q. McIntire

1.6 W  
4.17 S

New Location..   
Drill Deeper.....   
Abandonment.....

JUL 7 1954

Company Piersol Smith Feick & Kirkbride

Address RR Walker, W. Va.

Farm Tenant Hrs

Tract \_\_\_\_\_ Acres 1 1/2 Lease No. \_\_\_\_\_

Well (Farm) No. 2 Serial No. \_\_\_\_\_

Elevation (Spirit Level) 1163'

Quadrangle Centerpoint

County Tyler District M<sup>c</sup>ELROY

Engineer Robert R. Anderson  
*by O. Meredith*

Engineer's Registration No. 296

File No. \_\_\_\_\_ Drawing No. \_\_\_\_\_

Date June 23 54 Scale 1 in = 20 Poles

STATE OF WEST VIRGINIA  
DEPARTMENT OF MINES  
OIL AND GAS DIVISION  
CHARLESTON

WELL LOCATION MAP  
FILE NO. JYL-836-A

+ Denotes location of well on United States Topographic Maps, scale 1 to 62,500, latitude and longitude lines being represented by border lines as shown.

- Denotes one inch spaces on border line of original tracing.

TENANT HEIRS No. 2 - PIER SOL, SMITH, FEICK, & KIRKBRIDE - TYL-836-A



STATE OF WEST VIRGINIA  
DEPARTMENT OF MINES  
OIL AND GAS DIVISION

742

Quadrangle \_\_\_\_\_

WELL RECORD

Permit No. 896-1

Oil or Gas Well \_\_\_\_\_ (KIND)

Company Piersol, Smith, Neick & Kirkbride  
 Address Walker, rt. 2, W. VA  
 Farm Tennant, heirs, Acres 19  
 Location (waters) Indian Creek  
 Well No. 2. Elev. 1163'  
 District Hellroy County Tyler  
 The surface of tract is owned in fee by Tennant, heirs,  
Wick, Address W. VA  
 Mineral rights are owned by W.H. Craig  
Box, 596 Clarksburg, W. VA  
 Drilling commenced 1899 Liner 3 5/8 1/8  
 Drilling completed same  
 Date Shot \_\_\_\_\_ From \_\_\_\_\_ To \_\_\_\_\_  
 With \_\_\_\_\_  
 Open Flow \_\_\_\_\_ /10ths Water in \_\_\_\_\_ Inch  
 \_\_\_\_\_ /10ths Merc. in \_\_\_\_\_ Inch  
 Volume \_\_\_\_\_ Cu. Ft.  
 Rock Pressure \_\_\_\_\_ lbs. \_\_\_\_\_ hrs.  
 Oil \_\_\_\_\_ bbls., 1st 24 hrs.  
 Fresh water \_\_\_\_\_ feet \_\_\_\_\_ feet  
 Salt water \_\_\_\_\_ feet \_\_\_\_\_ feet

Casing and Tubing	Used in Drilling	Left in Well	Packers
Size			
16			Kind of Packer
13			
10	320'	none	Size of
8 3/4	1507	none	
6 3/8	2103'	2103	Depth set
5 3/16	2133	2133'	
3 5/8 1/8	999'	909'	Perf. top
2	no tubing		Perf. bottom
Liners Used			Perf. top
			Perf. bottom

CASING CEMENTED \_\_\_\_\_ SIZE \_\_\_\_\_ No. Ft. \_\_\_\_\_ Date \_\_\_\_\_  
 COAL WAS ENCOUNTERED AT \_\_\_\_\_ FEET \_\_\_\_\_ INCHES  
 \_\_\_\_\_ FEET \_\_\_\_\_ INCHES FEET \_\_\_\_\_ INCHES  
 \_\_\_\_\_ FEET \_\_\_\_\_ INCHES FEET \_\_\_\_\_ INCHES

Formation	Color	Hard or Soft	Top	Bottom	Oil, Gas or Water	Depth Found	Remarks
Clay and rock			000	1995'			
Big Injun sand			1995'	2133'			
lime & slate			2133'	3005'			
stray sand			3005'	3024'			
shale or brake)			3024	3027'			
Gordon sand			3027'	3048'			
		total depth	3057'				



(Over)

NOV 12 1954

Formation	Color	Hard or Soft	Top	Bottom	Oil, Gas or Water	Depth Found	Remarks

*Shuman*

Date 6 - 19, 1934

APPROVED Piersol-Smith Feick Owner

By E. R. Piersol <sup>H. Kirkbride</sup>  
(Title)