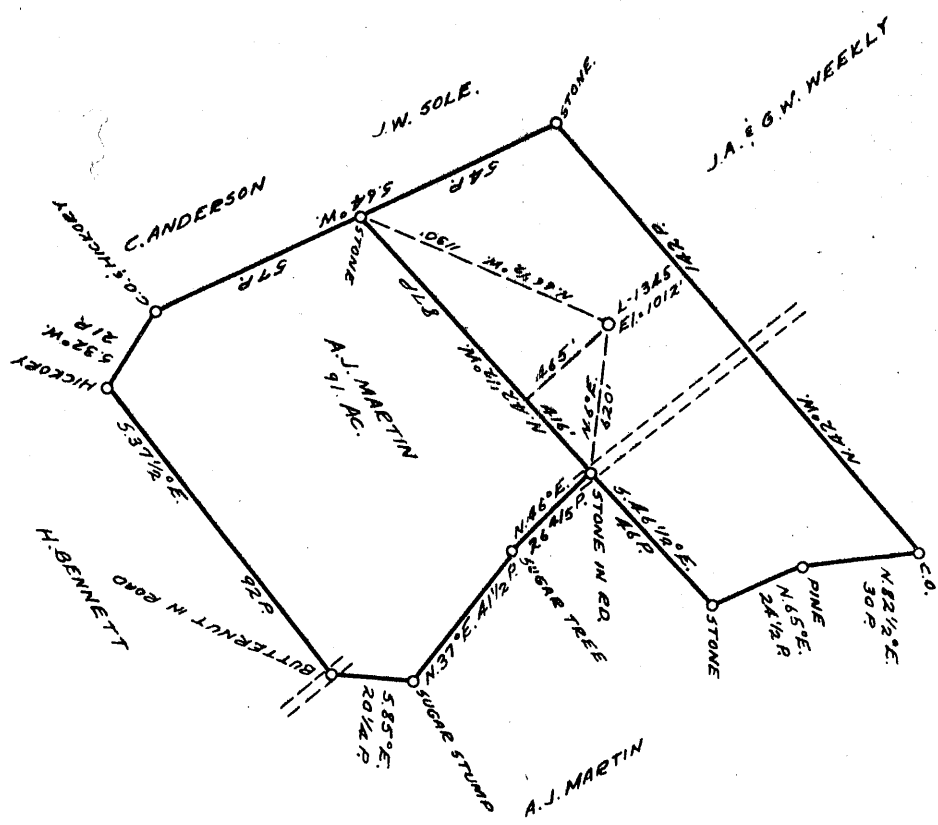


⊕ 2.84 W  
1.32 S



COAL OWNED BY \_\_\_\_\_

NEW LOCATION.....

DRILL DEEPER.....

ABANDONMENT.....

NOV 7 1955

*Handwritten notes:*  
 2.94 W  
 1.32 S

COMPANY THE MANUFACTURERS LIGHT & HEAT CO.

ADDRESS 800 UNION TRUST BLDG. PGH. PA.

FARM A. J. MARTIN

TRACT \_\_\_\_\_ ACRES 36 LEASE NO. 2946

WELL (FARM) No. 1 SERIAL No. 1345

ELEVATION (SPIRIT LEVEL) 1012'

QUADRANGLE W. UNION

COUNTY TYLER DISTRICT ELLSWORTH

ENGINEER Robert A. Neill

ENGINEER'S REGISTRATION No. 361 E

FILE No. \_\_\_\_\_ DRAWING No. Y-15-292

DATE 23 AUGUST 1955 SCALE 1"=800'

**STATE OF WEST VIRGINIA**  
 DEPARTMENT OF MINES  
 OIL AND GAS DIVISION  
 CHARLESTON

**WELL LOCATION MAP**

FILE No. JYL-863-A

⊕ DENOTES LOCATION OF WELL ON UNITED STATES TOPOGRAPHIC MAPS, SCALE 1 TO 62,500. LATITUDE AND LONGITUDE LINES BEING REPRESENTED BY BORDER LINES AS SHOWN.

— DENOTES ONE INCH SPACES ON BORDER LINE OF ORIGINAL TRACING.



STATE OF WEST VIRGINIA  
DEPARTMENT OF MINES  
OIL AND GAS DIVISION

764

Quadrangle West Union

WELL RECORD

Permit No. 1345

Oil or Gas Well Gas

Company THE MANUFACTURERS LIGHT AND HEAT COMPANY  
Address 800 Union Trust Building, Pgh., Penna.  
Farm A. J. Martin Acres 36  
Location (waters) Muddy Creek  
Well No. 1345 Elev. 1012'  
District Tyler County Ellsworth  
The surface of tract is owned in fee by \_\_\_\_\_  
Address \_\_\_\_\_  
Mineral rights are owned by \_\_\_\_\_  
Address \_\_\_\_\_  
Drilling commenced January 20, 1910  
Drilling completed April 11, 1910  
Date Shot \_\_\_\_\_ From \_\_\_\_\_ To \_\_\_\_\_  
With \_\_\_\_\_  
Open Flow \_\_\_\_\_ /10ths Water in \_\_\_\_\_ Inch  
\_\_\_\_\_ /10ths Merc. in \_\_\_\_\_ Inch  
Volume \_\_\_\_\_ Cu. Ft.  
Rock Pressure \_\_\_\_\_ lbs. \_\_\_\_\_ hrs.  
Oil \_\_\_\_\_ bbls., 1st 24 hrs.  
Fresh water \_\_\_\_\_ feet \_\_\_\_\_ feet  
Salt water \_\_\_\_\_ feet \_\_\_\_\_ feet

Casing and Tubing	Used in Drilling	Left in Well	Packers
Size			
16			Kind of Packer
13			
10	125		Size of
8 1/4	1175		
6 5/8	1890	1890	Depth set
5 3/16	2095	2095	
3			Perf. top
2			Perf. bottom
Liners Used			Perf. top
			Perf. bottom

CASING CEMENTED \_\_\_\_\_ SIZE \_\_\_\_\_ No. Ft. \_\_\_\_\_ Date \_\_\_\_\_  
COAL WAS ENCOUNTERED AT 654 FEET \_\_\_\_\_ INCHES  
\_\_\_\_\_ FEET \_\_\_\_\_ INCHES FEET \_\_\_\_\_ INCHES  
\_\_\_\_\_ FEET \_\_\_\_\_ INCHES FEET \_\_\_\_\_ INCHES

Formation	Color	Hard or Soft	Top	Bottom	Oil, Gas or Water	Depth Found	Remarks
Pittsburgh Coal			654	655			
Little Dunkard			965	995			
Big Dunkard			1170	1210			
Salt			1380	1610			
Maxon			1750	1780			
Big Lime			1820	1925			
Big Injun			1925	2110			
Gordon			2720	2745	Gas 2727		
Total Depth			2852				

