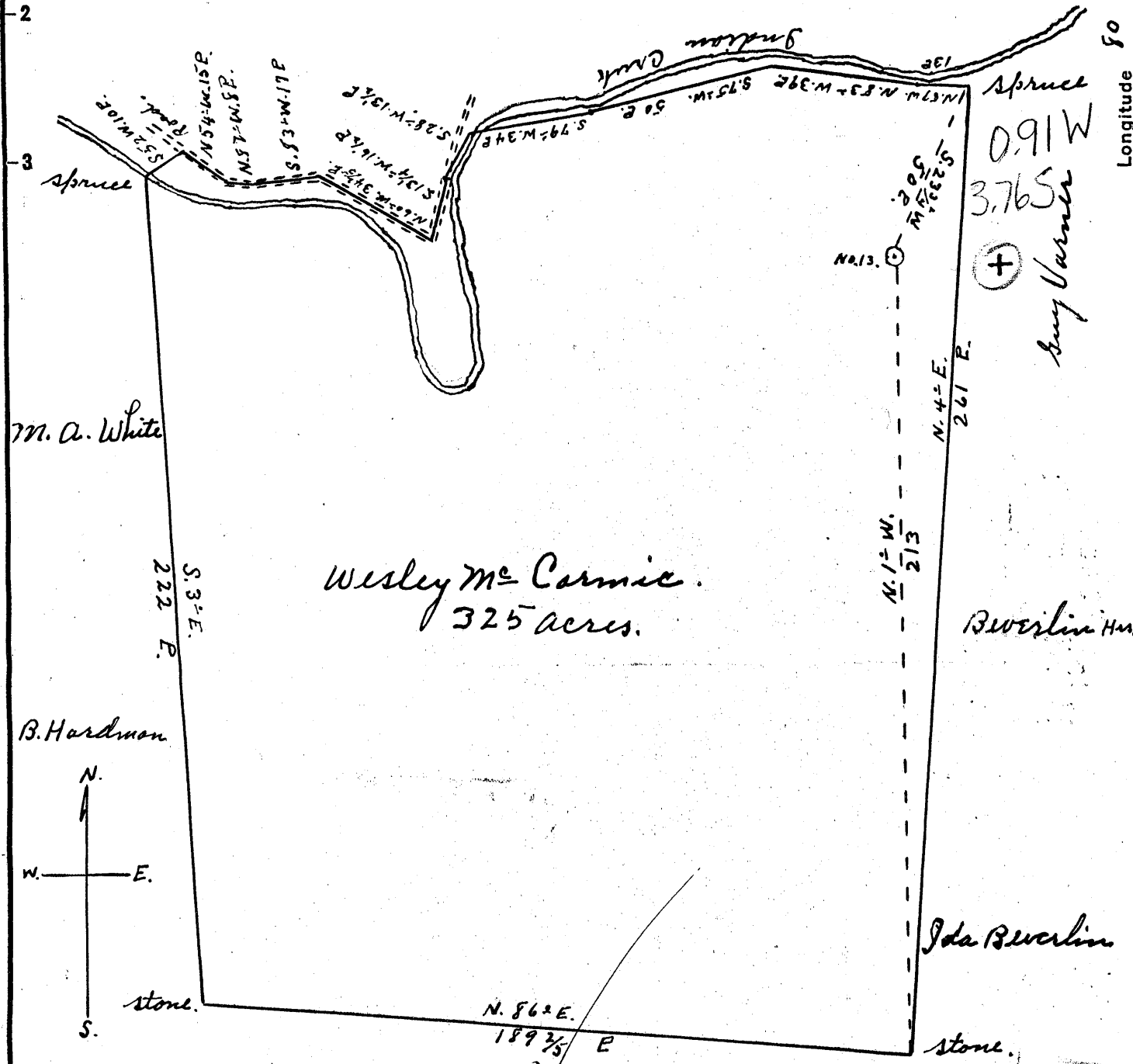


Jos. McCormic.



Wesley McCormic.
325 acres.

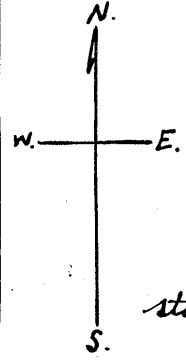
0.91 W
3.76 S
Buy Varner

(+)

Beverlin Hm.

Ida Beverlin

stone.



- New Location...
- Drill Deeper.....
- Abandonment.....

O. W. O. H. JUNE 18 1956

3.51

Company Mackey & White
 Address Raven Rock, W. Va.
 Farm Wesley McCormic
 Tract _____ Acres 325 Lease No. _____
 Well (Farm) No. 13 Serial No. _____
 Elevation (Spirit Level) 1060'
 Quadrangle Centerpoint
 County Tyler District McCleary
 Engineer Robert R. Anderson
137 No Triplett, Surgeon
 Engineer's Registration No. 296
 File No. _____ Drawing No. _____
 Date May 24 1956 Scale 1" = 40 P.

STATE OF WEST VIRGINIA
 DEPARTMENT OF MINES
 OIL AND GAS DIVISION
 CHARLESTON

WELL LOCATION MAP
 FILE NO. JYL-870-A

+ Denotes location of well on United States Topographic Maps, scale 1 to 62,500, latitude and longitude lines being represented by border lines as shown.

- Denotes one inch spaces on border line of original tracing.



STATE OF WEST VIRGINIA
DEPARTMENT OF MINES
OIL AND GAS DIVISION

763

WELL RECORD

Permit No. 41-870-A

Oil or Gas Well (KIND)

Company Maokey & White
 Address Raven Rock, W. Va.
 Farm Wesley Mc. Cormic Acres 325
 Location (waters) Indian Creek
 Well No. 13 Elev. 1060
 District Mc. Elroy County Tyler hrs.
 The surface of tract is owned in fee by Wesley Mc. Cormic
 Address _____
 Mineral rights are owned by same
 Address _____
 Drilling commenced 1896
 Drilling completed _____
 Date Shot _____ From _____ To _____
 With _____
 Open Flow /10ths Water in _____ Inch
 /10ths Merc. in _____ Inch
 Volume Nowdry Cu. Ft.
 Rock Pressure _____ lbs. _____ hrs.
 Oil _____ bbls., 1st 24 hrs.
 Fresh water _____ feet _____ feet
 Salt water _____ feet _____ feet

| Casing and Tubing | Used in Drilling | Left in Well | Packers |
|-------------------|------------------|---------------|----------------|
| Size | | | |
| 16 | | | Kind of Packer |
| 13 | | | |
| 10 | 250 | pulled | Size of |
| 8 1/4 | 1361 | 1361 | |
| 6 5/8 | 2037 | 2037 | Depth set |
| 5 3/16 | | | |
| 3 | | | Perf. top |
| 2 | | | Perf. bottom |
| Liners Used | | | Perf. top |
| | | | Perf. bottom |

CASING CEMENTED _____ SIZE _____ No. Ft. _____ Date _____
 COAL WAS ENCOUNTERED AT _____ FEET _____ INCHES
 _____ FEET _____ INCHES FEET _____ INCHES
 _____ FEET _____ INCHES FEET _____ INCHES

| Formation | Color | Hard or Soft | Top | Bottom | Oil, Gas or Water | Depth Found | Remarks |
|-----------|-------|--------------|-------------------|--------|-------------------|-------------|---------|
| Injun | | | 2119 | 2235 | | | |
| | | | Total depth. 2235 | | | | |



| Formation | Color | Hard or Soft | Top | Bottom | Oil, Gas or Water | Depth Found | Remarks |
|-----------|-------|--------------|-----|--------|-------------------|-------------|---------|
| | | | | | | | |

Date May 29, 1954

APPROVED Dwight White, Owner

By Wentner (Title)