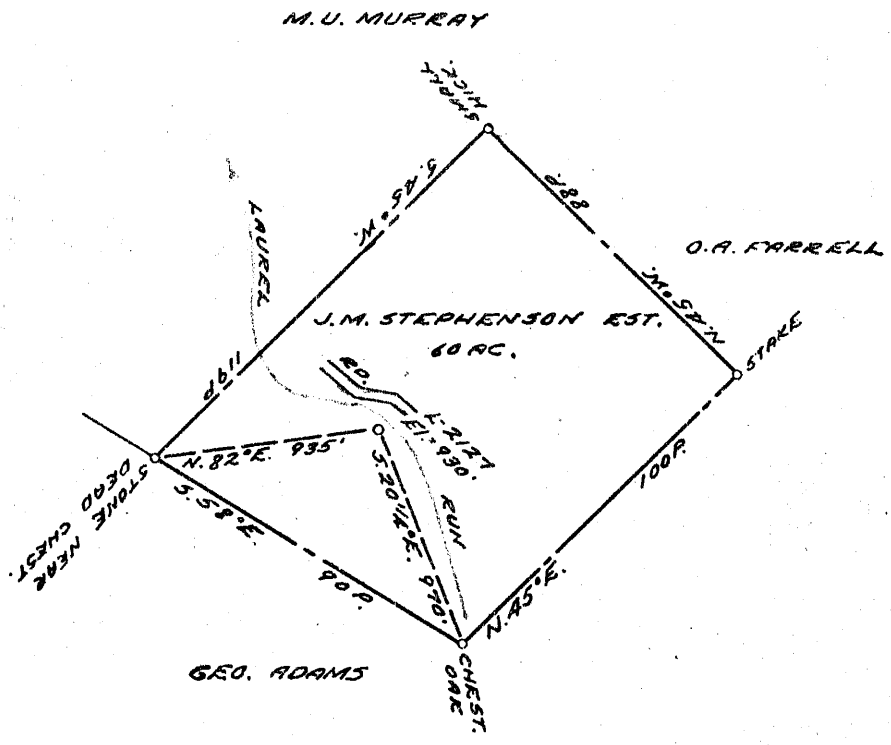


LATITUDE 39 0 30

1.84 W
0.085

LONGITUDE 80 45



COAL OWNED BY _____

NEW LOCATION...

DRILL DEEPER...

ABANDONMENT...

JUL 3 1957

1.88 W
0.08 Q

COMPANY THE MANUFACTURER LIGHT & HEAT

ADDRESS 800 UNION TRUST BLDG. PGH. PA.

FARM J.M. STEPHENSON EST.

TRACT _____ ACRES 60 LEASE NO. 4593

WELL (FARM) No. 1 SERIAL No. 2127

ELEVATION (SPIRIT LEVEL) 990'

QUADRANGLE WEST UNION

COUNTY TYLER DISTRICT ELASWORTH

ENGINEER Thomas E. Ugin M.

ENGINEER'S REGISTRATION No. 1503

FILE No. _____ DRAWING No. Y-15-539

DATE 4 MARCH 57 SCALE 1" = 800'

STATE OF WEST VIRGINIA
DEPARTMENT OF MINES
OIL AND GAS DIVISION
CHARLESTON

WELL LOCATION MAP

FILE No. JYL-883-A

+ DENOTES LOCATION OF WELL ON UNITED STATES TOPOGRAPHIC MAPS, SCALE 1 TO 62,500. LATITUDE AND LONGITUDE LINES BEING REPRESENTED BY BORDER LINES AS SHOWN.

- DENOTES ONE INCH SPACES ON BORDER LINE OF ORIGINAL TRACING.

J. M. STEPHENSON STATE No. 1 (2127) - M. L. & H. Co. - TYL-883-A



STATE OF WEST VIRGINIA
DEPARTMENT OF MINES
OIL AND GAS DIVISION

773

Quadrangle West Union
Permit No. 883-A

WELL RECORD

Oil or Gas Well Gas
(KIND)

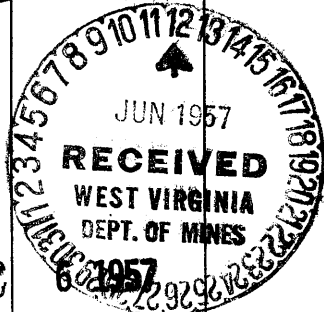
Company THE MANUFACTURERS LIGHT AND HEAT COMPANY
Address 800 Union Trust Building, Pgh. Pa.
Farm J. M. Stevenson Acres 60
Location (waters) _____
Well No. 2127 1 Elev. 930
District Ellsworth County Tyler
The surface of tract is owned in fee by _____
Address _____
Mineral rights are owned by _____
Address _____
Drilling commenced September 9, 1919
Drilling completed October 21, 1919
Date Shot _____ From _____ To _____
With _____

Casing and Tubing	Used in Drilling	Left in Well	Packers
Size			Kind of Packer
16			
13			Size of
10			
8 1/4			Depth set
6 1/2	1980'		
5 3/16	2049'	2049'	
3			Perf. top
2			Perf. bottom
Liners Used			Perf. top
			Perf. bottom

Open Flow _____ /10ths Water in _____ Inch
_____ /10ths Merc. in _____ Inch
Volume _____ Cu. Ft.
Rock Pressure 12 lbs. 130 hrs.
Oil _____ bbls., 1st 24 hrs.
Fresh water _____ feet
Salt water _____ feet

CASING CEMENTED _____ SIZE _____ No. Ft. _____ Date _____
COAL WAS ENCOUNTERED AT _____ FEET _____ INCHES
_____ FEET _____ INCHES FEET _____ INCHES
_____ FEET _____ INCHES FEET _____ INCHES

Formation	Color	Hard or Soft	Top	Bottom	Oil, Gas or Water	Depth Found	Remarks
Pittsburgh Coal		515	517	2	(Complete Report fr. Time Well) (was drilled in 1917) (6-5/8" Casing was pulled fr. well) (and then re-run afterwards) using (40' more than was first in well) 4 1/10 Mercury, in 2" Opening Rock Pressure - 80 lbs. ~10327 m.t. Spring Gauge Test 1st. M, 2nd. M, 3rd. M, 4th. M, 5th. M, 12# 18# 22# 28# 32# 24 hours. 130# Slate light soft 2460 2515 55 Slate white soft 2570 2667 97		
Little Dunkard		860	880	20			
Big Dunkard		960	1000	40			
1st. Salt Sand		1370	1390	20			
2nd. Salt Sand		1475	1500	25			
3rd. Salt Sand		1520	1630	110			
Maxon Sand		1680	1720	40			
Little Lime		1760	1770	10			
Pencil Cave		1770	1780	10			
Big Lime		1780	1845	65			
Big Injun		1845	1865	20			
1st. Gas Pay		1865	1885	20			
2nd Gas Pay		1885	1944	59			
Total Depth		1944					
---DRILLED DEEPER FROM THIS DEPTH---							
Big Injun, Open white		1944	1974	30			
Big Injun, Close, white		1974	2089	145			
Red Rock, red soft		2515	2570	55			
Gordon Sand white soft		2667	2697	30			
Total Depth		2722					
Slate black soft		2089	2139	50			
Sand white hard		2139	2146	7			
Slate black soft		2146	2224	78			
Lime white hard		2224	2352	28			
Slate black soft		2352	2405	53			
Sand white hard		2405	2414	9			
Slate black soft		2414	2426	12			
Slate dark hard		2426	2460	34			



Formation	Color	Hard or Soft	Top	Bottom	Oil, Gas or Water	Depth Found	Remarks

Date June 10, 19 57

APPROVED THE MANUFACTURERS LIGHT AND HEAT CO., Owner

By Walter A. Martin
(Title) Land Agent