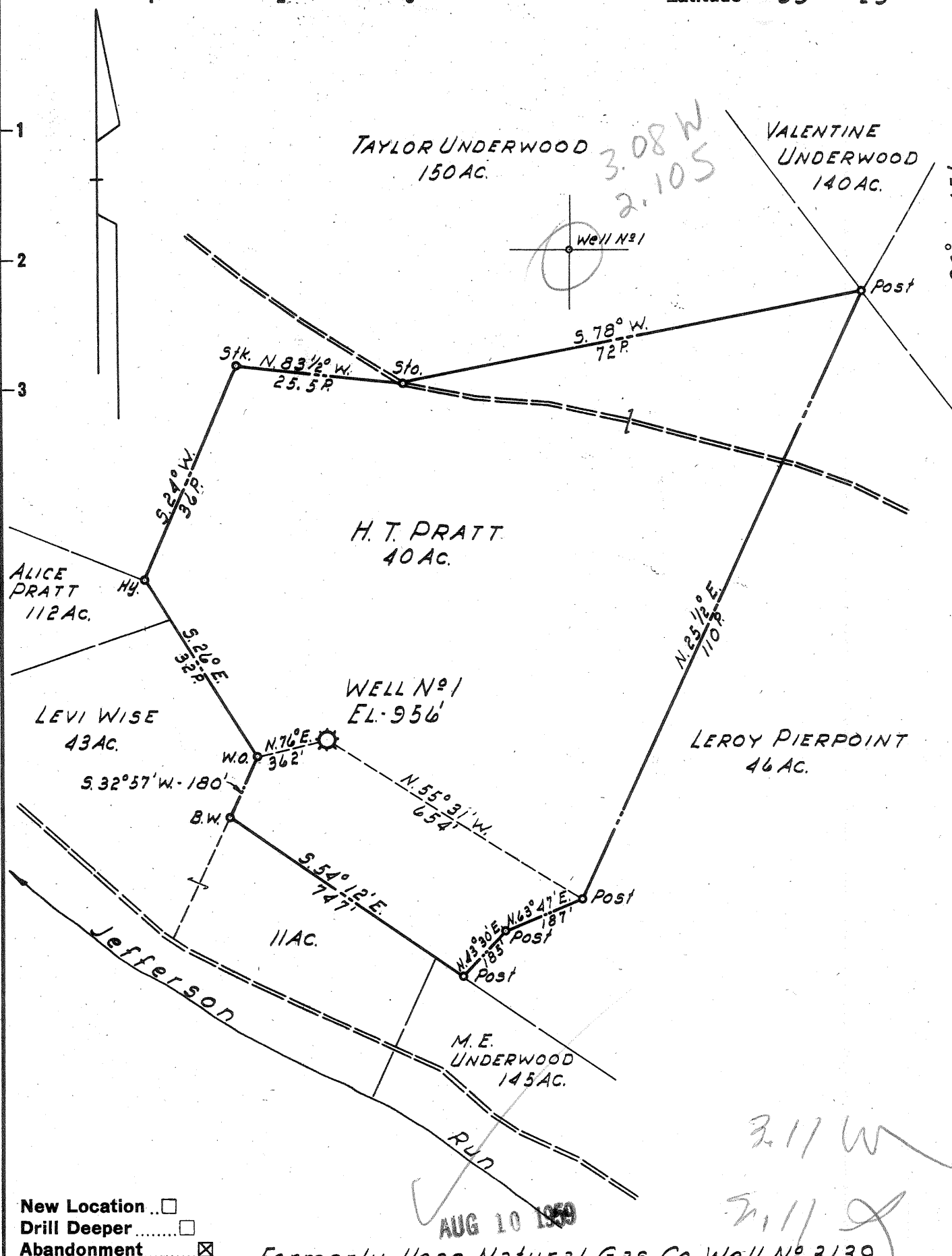


Latitude 39° 25'

Longitude 80° 45'



- New Location
- Drill Deeper
- Abandonment

Formerly Hope Natural Gas Co. Well No 3139

Company LURAY LAND, INC.
 Address POINT PLEASANT, WEST VA.
 Farm H. T. PRATT
 Tract _____ Acres 40 Lease No. _____
 Well (Farm) No. 1 Serial No. 3139
 Elevation (Spirit Level) 956'
 Quadrangle WEST UNION
 County TYLER District McELROY
 Engineer H. P. SUTER
 Engineer's Registration No. 1805
 File No. _____ Drawing No. _____
 Date 23 JUNE, 1959 Scale 1" = 20 POLES

STATE OF WEST VIRGINIA
 DEPARTMENT OF MINES
 OIL AND GAS DIVISION
 CHARLESTON

WELL LOCATION MAP
 FILE NO. Ty1-906-A

+ Denotes location of well on United States Topographic Maps, scale 1 to 62,500, latitude and longitude lines being represented by border lines as shown.

- Denotes one inch spaces on border line of original tracing.

Hope
 H. T. PRATT No. 1 (3139) - LURAY LAND, INC. - TYL-906-A