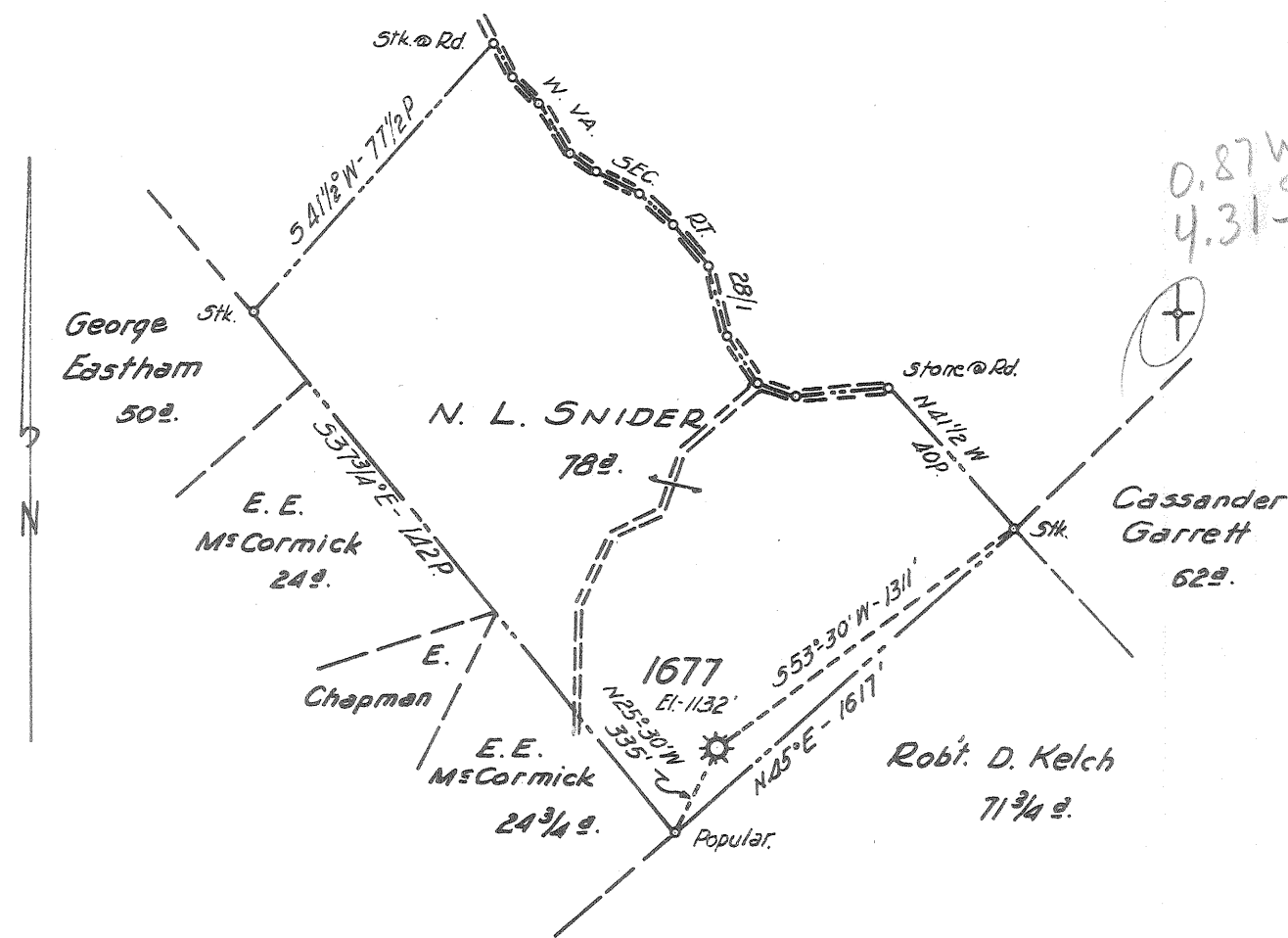


Latitude 39° 35'

Longitude 80° 45'



MAR 13 1960

New Location BY W. L. Conley - Reader, W. VA.
 Drill Deeper
 Abandonment 1677

FORMERLY H. N. G. CO. WELL NO 1677

Company A. M. SNIDER
 Address HUNDRED, W. VA.
 Farm N. L. SNIDER
 Tract _____ Acres 78 Lease No. 20308
 Well (Farm) No. _____ Serial No. 1677
 Elevation (Spirit Level) 1132'
 Quadrangle NEW MARTINSVILLE (5V)
 County TYLER District ELLSWORTH
 Engineer HENRY A. HAIN
 Engineer's Registration No. 3150
 File No. A.M.S. Drawing No. _____
 Date DEC. 14, 1959 Scale 1" = 40 POLES

STATE OF WEST VIRGINIA
 DEPARTMENT OF MINES
 OIL AND GAS DIVISION
 CHARLESTON

WELL LOCATION MAP
 FILE NO. TYL-911-A

+ Denotes location of well on United States Topographic Maps, scale 1 to 62,500, latitude and longitude lines being represented by border lines as shown.

- Denotes one inch spaces on border line of original tracing.

N. L. SNIDER NO 1677 (4 pgs) — A. M. SNIDER — TYL-911-A