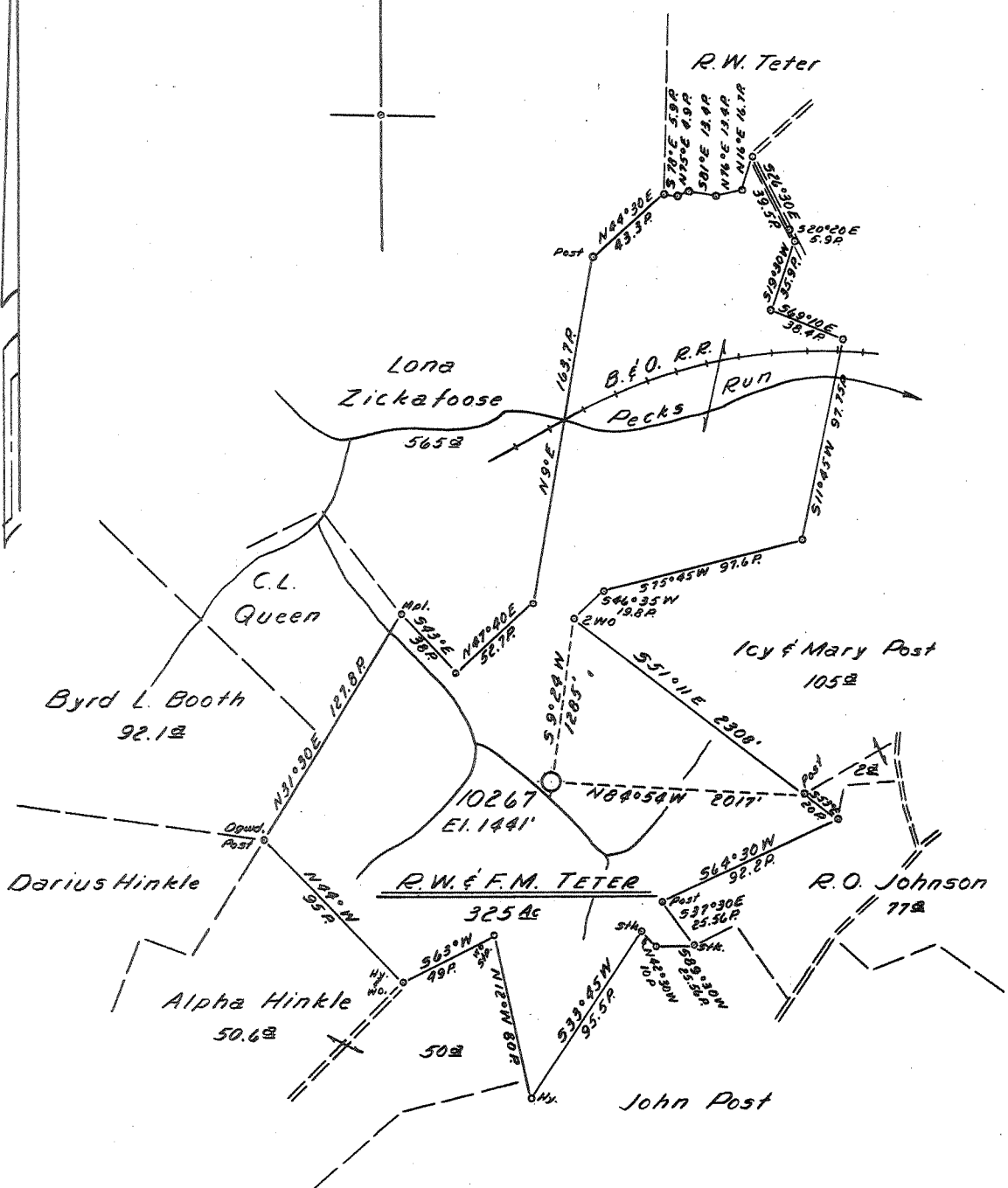


2385  
492W



- New Location
- Drill Deeper
- Abandonment

Map Sheet 56-A, 5-29 E-24, F.B. 1218, P.17-18

Company	HOPE NATURAL GAS CO.
Address	CLARKSBURG, W.VA.
Farm	R.W. & F.M. TETER
Tract	Acres 325 Lease No. 63845
Well (Farm) No.	Serial No. 10267
Elevation (Spirit Level)	1441'
Quadrangle	PHILIPPI-5C
County	UPSHUR District WARREN
Engineer	Guy H. Bradley
Engineer's Registration No.	2425
File No.	Drawing No.
Date	1/5/60 Scale 1" = 80 POLES

STATE OF WEST VIRGINIA  
DEPARTMENT OF MINES  
OIL AND GAS DIVISION  
CHARLESTON

**WELL LOCATION MAP**  
FILE NO. UPS-602

+ Denotes location of well on United States Topographic Maps, scale 1 to 62,500, latitude and longitude lines being represented by border lines as shown.

- Denotes one inch spaces on border line of original tracing.



STATE OF WEST VIRGINIA  
DEPARTMENT OF MINES  
OIL AND GAS DIVISION 18

Quadrangle PHILLIPI

Permit No. UPS - 602

**WELL RECORD**

Oil or Gas Well Gas  
(KIND)

Company Hope Natural Gas Company  
Address Clarksburg, W. Va.  
Farm R.W. & F. M. Teeter Acres 325  
Location (waters) \_\_\_\_\_  
Well No. 10267 Elev. 1141  
District Warren County Upshur  
The surface of tract is owned in fee by \_\_\_\_\_  
Address \_\_\_\_\_  
Mineral rights are owned by \_\_\_\_\_  
Address \_\_\_\_\_  
Drilling commenced 2-24-60  
Drilling completed 6-30-60  
Date Shot Not shot From \_\_\_\_\_ To \_\_\_\_\_  
With \_\_\_\_\_  
Open Flow /10ths Water in \_\_\_\_\_ Inch  
/10ths Merc. in \_\_\_\_\_ Inch  
Volume 133 M Cu. Ft.  
Rock Pressure 1100 lbs. 13 hrs.  
Oil None bbls., 1st 24 hrs.  
WELL ACIDIZED No  
WELL FRACTURED 7-11-60

Casing and Tubing	Used in Drilling	Left in Well	Packers
Size			Kind of Packer _____
16			
13	16	16	
10	317	317	Size of _____
8 1/4	1141	1141	
6 3/4			Depth set _____
<del>EXTRA</del> 4 1/2	1099	1099	
3			Perf. top _____
2			Perf. bottom _____
Liners Used			Perf. top _____
			Perf. bottom _____

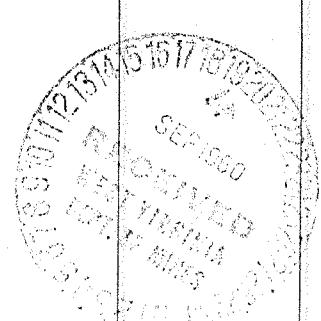
CASING CEMENTED \_\_\_\_\_ SIZE \_\_\_\_\_ No. Ft. \_\_\_\_\_ Date \_\_\_\_\_  
4 1/2" cemented with 110 bags  
COAL WAS ENCOUNTERED AT \_\_\_\_\_ FEET \_\_\_\_\_ INCHES  
None FEET \_\_\_\_\_ INCHES FEET \_\_\_\_\_ INCHES  
\_\_\_\_\_ FEET \_\_\_\_\_ INCHES FEET \_\_\_\_\_ INCHES

RESULT AFTER TREATMENT 6,128 M

ROCK PRESSURE AFTER TREATMENT Same

Fresh Water 75' Feet Salt Water ~~XXXX~~ 2360 Feet

Formation	Color	Hard or Soft	Top	Bottom	Oil, Gas or Water	Depth	Remarks
Yellow Clay			0	16			
Lime			16	35			
Blue Clay			35	45			
Slate			45	80	Water	75'	Hole full
R. Rock			80	105			
Slate			105	135			
Lime			135	160			
Slate			160	205			
Brittle Lime			205	230			
Slate, Black			230	250			
Sand			250	312			
Slate			312	321			
Sand			321	375			
Slate			375	385			
Lime			385	415			
Sand			415	450			
Slate			450	460			
Lime			460	510			
Slate			510	550			
Lime			550	575			
Sand			575	615			
Slate			615	625			
Sand			625	779			
Slate, Black			779	803			
Sand			803	870			
Slate, Black			870	903			
Sand			903	926			
Slate, Black			926	1,011			
Sand			1,011	1,035			



(over)

Formation	Color	Hard or Soft	Top <i>11</i>	Bottom	Oil, Gas or Water	Depth Found	Remarks
Slate			1,035	1,075			
Sand			1,075	1,100			
Red Rock			1,100	1,178			
Sand, Maxton			1,178	1,239			
Red Rock			1,239	1,278			
Lime			1,278	1,311			
R. Rock			1,311	1,318			
Slate			1,318	1,387			
Lime, Little			1,387	1,398			
Slate			1,398	1,429			
Lime, Big			1,429	1,620			
Slate			1,620	1,623			
Sand, Broken			1,623	1,802	Gas	1649	
Total Depth			1,649				
Gritty Lime			1,802	1,855			
Pink Rock			1,855	1,860			
Lime			1,860	1,875			
Slate			1,875	1,892			
Red Lime			1,892	1,910			
Red Rock and Shells			1,910	2,164			
Sand, 5th			2,164	2,240			
Slate & Shells			2,240	2,352			
Sand			2,352	2,364	Water	2360	<i>189.22</i>
Slate-Shells			2,364	2,690			
Lime			2,690	2,865			
Slate & Shells			2,865	3,008			
Lime			3,008	3,552			
Slate & Shells			3,552	3,688			
Lime, Gritty			3,688	3,738			
Slate & Shells			3,738	4,033			
Benson			4,033	4,053	Gas	4044	
Lime-Grey			4,053				
Total Depth			4,109				

Date September 16, 1960, 19

APPROVED Hope Natural Gas Company, Owner

By \_\_\_\_\_ (Title)