



State of West Virginia
Department of Environmental Protection - Office of Oil and Gas
Well Operator's Report of Well Work

API 47 - 097 - 03822 County Upshur District Meade
Quad Alton 7.5' Pad Name Wygal Carr Field/Pool Name _____
Farm name Wygal, Linda K. Well Number Wygal Carr #1H WV0432
Operator (as registered with the OOG) Mountain V Oil & Gas, Inc.
Address PO Box 470 City Bridgeport State WV Zip 26330

As Drilled location NAD 83/UTM Attach an as-drilled plat, profile view, and deviation survey
Top hole Northing 4,300,650 Easting 568,100
Landing Point of Curve Northing 4,300,777 Easting 567,976
Bottom Hole Northing 4,301,396 Easting 567,377

Elevation (ft) 2,124' GL Type of Well New Existing Type of Report Interim Final
Permit Type Deviated Horizontal Horizontal 6A Vertical Depth Type Deep Shallow
Type of Operation Convert Deepen Drill Plug Back Redrilling Rework Stimulate
Well Type Brine Disposal CBM Gas Oil Secondary Recovery Solution Mining Storage Other _____
Type of Completion Single Multiple Fluids Produced Brine Gas NGL Oil Other _____
Drilled with Cable Rotary

Drilling Media Surface hole Air Mud Fresh Water Intermediate hole Air Mud Fresh Water Brine
Production hole Air Mud Fresh Water Brine
Mud Type(s) and Additive(s)
N/A

Date permit issued 01/06/2012 Date drilling commenced 01/27/2012 Date drilling ceased 03/16/2012
Date completion activities began 05/07/2012 Date completion activities ceased 05/07/2012
Verbal plugging (Y/N) _____ Date permission granted _____ Granted by _____

Please note: Operator is required to submit a plugging application within 5 days of verbal permission to plug

Freshwater depth(s) ft 126 Open mine(s) (Y/N) depths N/A
Salt water depth(s) ft 880, 1310 Void(s) encountered (Y/N) depths N/A
Coal depth(s) ft N/A Cavern(s) encountered (Y/N) depths N/A
Is coal being mined in area (Y/N) N

RECEIVED
Office of Oil and Gas

Reviewed by: _____

APR 13 2016

04/22/2016

API 47-097 - 03822 Farm name Wygat, Linda K. Well number Wygat Carr #1H WV0432

| CASING STRINGS | Hole Size | Casing Size | Depth | New or Used | Grade wt/ft | Basket Depth(s) | Did cement circulate (Y/N) * Provide details below* |
|---------------------------|-----------|-------------|---------|-------------|-------------|-----------------|---|
| Conductor | 24" | 16" | 144' | New | | | Sand-In |
| Surface | 20" | 13 3/8" | 440' | New | 48 | 388, 342 | Yes |
| Coal | | | | | | | |
| Intermediate 1 | 12 1/4" | 8 5/8" | 4308' | New | 32 | | Yes |
| Intermediate 2 | | | | | | | |
| Intermediate 3 | | | | | | | |
| Production | 7 7/8" | 4 1/2" | 10,550' | New | 11.5 P110 | N/A | No |
| Tubing | 4 1/2" | 2 3/8" | 7,421' | New | 4.2 J55 | N/A | No |
| Packer type and depth set | | | | | | | |

Comment Details _____

| CEMENT DATA | Class/Type of Cement | Number of Sacks | Slurry wt (ppg) | Yield (ft ³ /sks) | Volume (ft ³) | Cement Top (MD) | WOC (hrs) |
|----------------|----------------------|-----------------|-----------------|------------------------------|---------------------------|-----------------|-----------|
| Conductor | | | | | | | |
| Surface | Type I | 450 | 14 | 1.37 | 650 | Surf. | 48 |
| Coal | | | | | | | |
| Intermediate 1 | Unifill Light | 1250 | 9.9 | 1.84 | 2398 | Surf. | 48 |
| Intermediate 2 | | | | | | | |
| Intermediate 3 | | | | | | | |
| Production | Type I Universal | 843 | 14 | 1.37 | 1310 | N/A | 18 days |
| Tubing | | | | | | | |

Drillers TD (ft) 10,546' Loggers TD (ft) 10,546'

Deepest formation penetrated Marcellus Plug back to (ft) N/A

Plug back procedure Cemented with 120 sks Type I 12% salt 1.18 yield 16# slurry 4807' - 4000' 7 7/8" open hole

Kick off depth (ft) 4000'

Check all wireline logs run caliper density deviated/directional induction
 neutron resistivity gamma ray temperature sonic

Well cored Yes No Conventional Sidewall Were cuttings collected Yes No

DESCRIBE THE CENTRALIZER PLACEMENT USED FOR EACH CASING STRING None

RECEIVED
Office of Oil and Gas

WAS WELL COMPLETED AS SHOT HOLE Yes No DETAILS APR 13 2016

WAS WELL COMPLETED OPEN HOLE? Yes No DETAILS WV Department of Environmental Protection

WERE TRACERS USED Yes No TYPE OF TRACER(S) USED _____

API 47- 097 - 03822

Farm name Wygal, Linda K.

Well number Wygal Carr #1H WV0432

PERFORATION RECORD

| Stage No. | Perforation date | Perforated from MD ft. | Perforated to MD ft. | Number of Perforations | Formation(s) |
|-----------|------------------|------------------------|----------------------|------------------------|--------------|
| | **SEE | ATTACHED | | | |
| | | | | | |
| | | | | | |
| | | | | | |
| | | | | | |
| | | | | | |
| | | | | | |
| | | | | | |
| | | | | | |
| | | | | | |
| | | | | | |
| | | | | | |
| | | | | | |
| | | | | | |
| | | | | | |
| | | | | | |
| | | | | | |
| | | | | | |
| | | | | | |

Please insert additional pages as applicable.

STIMULATION INFORMATION PER STAGE

Complete a separate record for each stimulation stage.

| Stage No. | Stimulations Date | Ave Pump Rate (BPM) | Ave Treatment Pressure (PSI) | Max Breakdown Pressure (PSI) | ISIP (PSI) | Amount of Proppant (lbs) | Amount of Water (bbls) | Amount of Nitrogen/other (units) |
|-----------|-------------------|---------------------|------------------------------|------------------------------|------------|--------------------------|------------------------|----------------------------------|
| | | **SEE | ATTACHED | | | | | |
| | | | | | | | | |
| | | | | | | | | |
| | | | | | | | | |
| | | | | | | | | |
| | | | | | | | | |
| | | | | | | | | |
| | | | | | | | | |
| | | | | | | | | |
| | | | | | | | | |
| | | | | | | | | |
| | | | | | | | | |
| | | | | | | | | |
| | | | | | | | | |
| | | | | | | | | |
| | | | | | | | | |
| | | | | | | | | |
| | | | | | | | | |
| | | | | | | | | |

RECEIVED
Office of Oil and Gas
APR 13 2016
WV Department of
Environmental Protection

Please insert additional pages as applicable.

API 47- 097 - 03822 Farm name Wygai, Linda K. Well number _____

| <u>PRODUCING FORMATION(S)</u> | <u>DEPTHS</u> | |
|-------------------------------|---------------|----------------------------------|
| <u>Marcellus</u> | <u>7650</u> | <u>TVD</u> _____ <u>MD</u> _____ |
| _____ | _____ | _____ |
| _____ | _____ | _____ |

Please insert additional pages as applicable.

GAS TEST Build up Drawdown Open Flow OIL TEST Flow Pump

SHUT-IN PRESSURE Surface 1800 psi Bottom Hole N/A psi DURATION OF TEST 24 hrs

OPEN FLOW Gas Oil NGL Water GAS MEASURED BY
 Estimated Orifice Pilot
1 mcfpd n/a bpd n/a bpd 40 bpd

| LITHOLOGY/ FORMATION | TOP DEPTH IN FT NAME TVD | BOTTOM DEPTH IN FT TVD | TOP DEPTH IN FT MD | BOTTOM DEPTH IN FT MD | DESCRIBE ROCK TYPE AND RECORD QUANTITY AND TYPE OF FLUID (FRESHWATER, BRINE, OIL, GAS, H ₂ S, ETC) |
|-------------------------|--------------------------------|------------------------------|--------------------------|-----------------------------|--|
| | 0 | | 0 | | |
| Genesee Shale | 7217 | 7251 | | | |
| Tully Ls | 7251 | 7279 | | | |
| Upper Marcellus | 7365 | 7402 | | | |
| Purcell Ls | 7402 | 7404 | | | |
| Lower Marcellus | 7404 | 7467 | | | |
| Onondaga | 7467 | 7473 | | | |
| | | | | | |
| | | | | | |
| | | | | | |
| | | | | | |
| | | | | | |
| | | | | | |
| | | | | | |

Please insert additional pages as applicable.

Drilling Contractor UDI
 Address PO Box 677414 City Dallas State TX Zip 75267-4714

Logging Company Weatherford
 Address PO Box 2000019 City Houston State TX Zip 77216-3696

Cementing Company Universal Well Service
 Address PO Box 200969 City Dallas State TX Zip 75320-0969

Stimulating Company Universal Well Service
 Address PO Box 200969 City Dallas State TX Zip 75320-0969

Please insert additional pages as applicable.

Completed by Mike Shayer Telephone 304-842-6320
 Signature _____ Title President Date _____

Submittal of Hydraulic Fracturing Chemical Disclosure Information Attach copy of FRACFOCUS Registry

RECEIVED
Office of Oil and Gas

APR 13 2016

WV Department of
Environmental Protection
04/22/2016

Universal Well Services, Inc.



Stimulation Report

| | |
|-----------------|---------------------|
| Client: | Mt. V Oil & Gas |
| Well: | Wygol Carr 1H |
| Treatment Type: | Slickwater Fracture |
| Date: | May 7, 2012 |

RECEIVED
Office of Oil and Gas

APR 13 2016

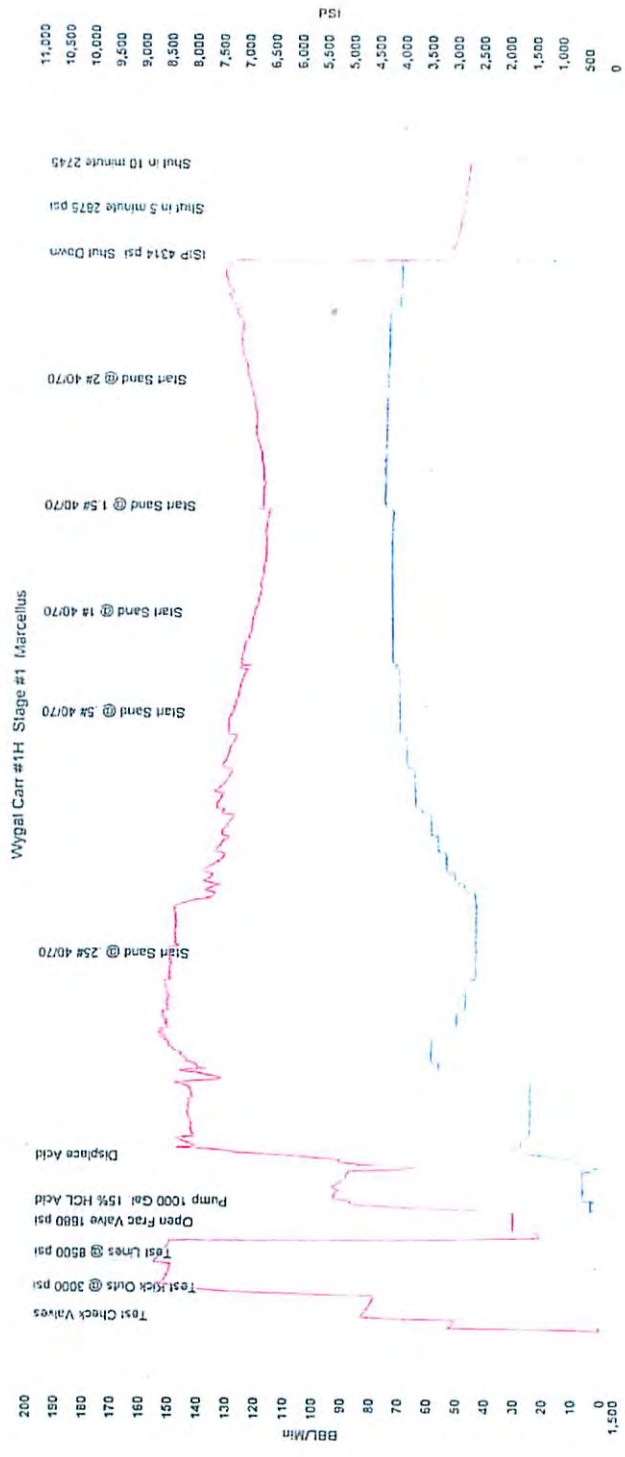
Disclaimer Notice

WV Department of
Environmental Protection

This information is presented in good faith. The results are based on the Meyer's computer model which includes both known and assumed well and reservoir information. Universal Well Services, Inc. assumes no liability for advice or recommendations made concerning results of the simulation. The information presented is the best estimate of the actual results that may be achieved prior to the treatment with the known information. Input quality can be improved through various tests or procedures which Universal Well Services, Inc. can assist in selecting.

04/22/2016

Density
 Well Head PSA
 Flow
 Well Head Slurry Flow
 Pressure
 Well Head Pressure
 Quantity
 Well Head Slurry Slage



RECEIVED
Office of Oil and Gas

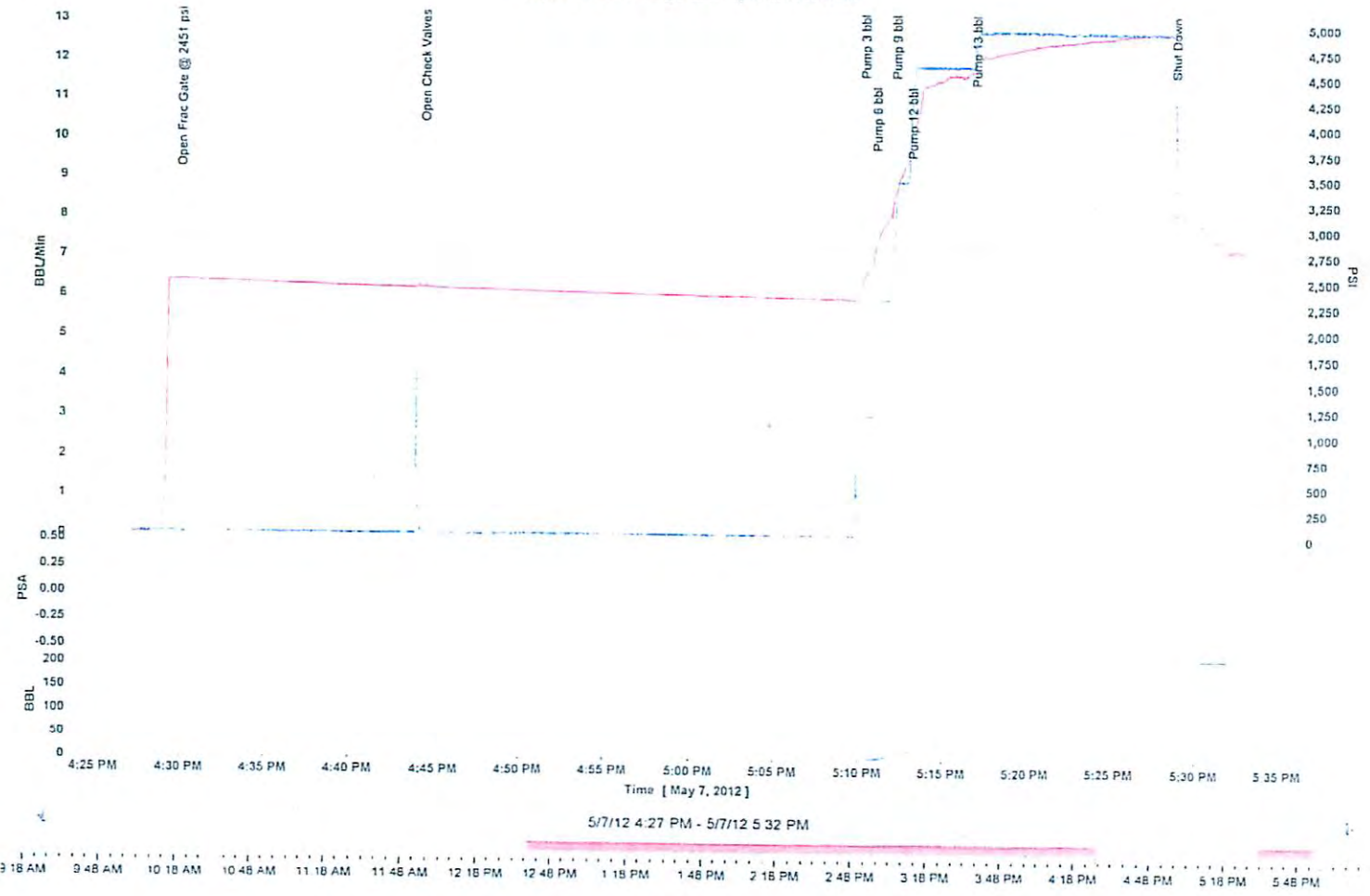
APR 13 2016

WV Department of
Environmental Protection

04/22/2016

Wygat Carr #1H Stage #2 Pump Down Marcellus

- Density
- Flow
- Pressure
- Quantity

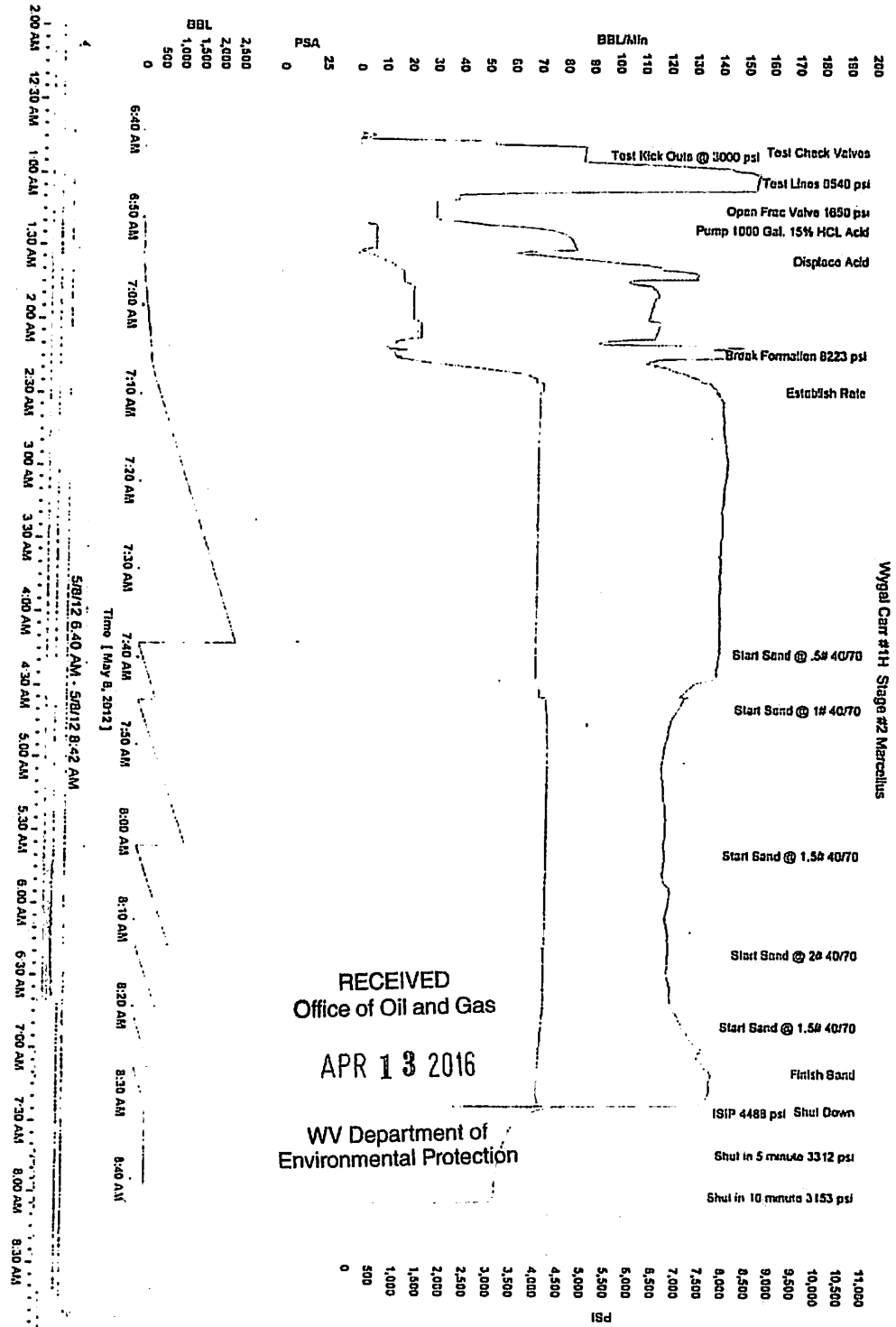


RECEIVED
Office of Oil and Gas

APR 13 2016

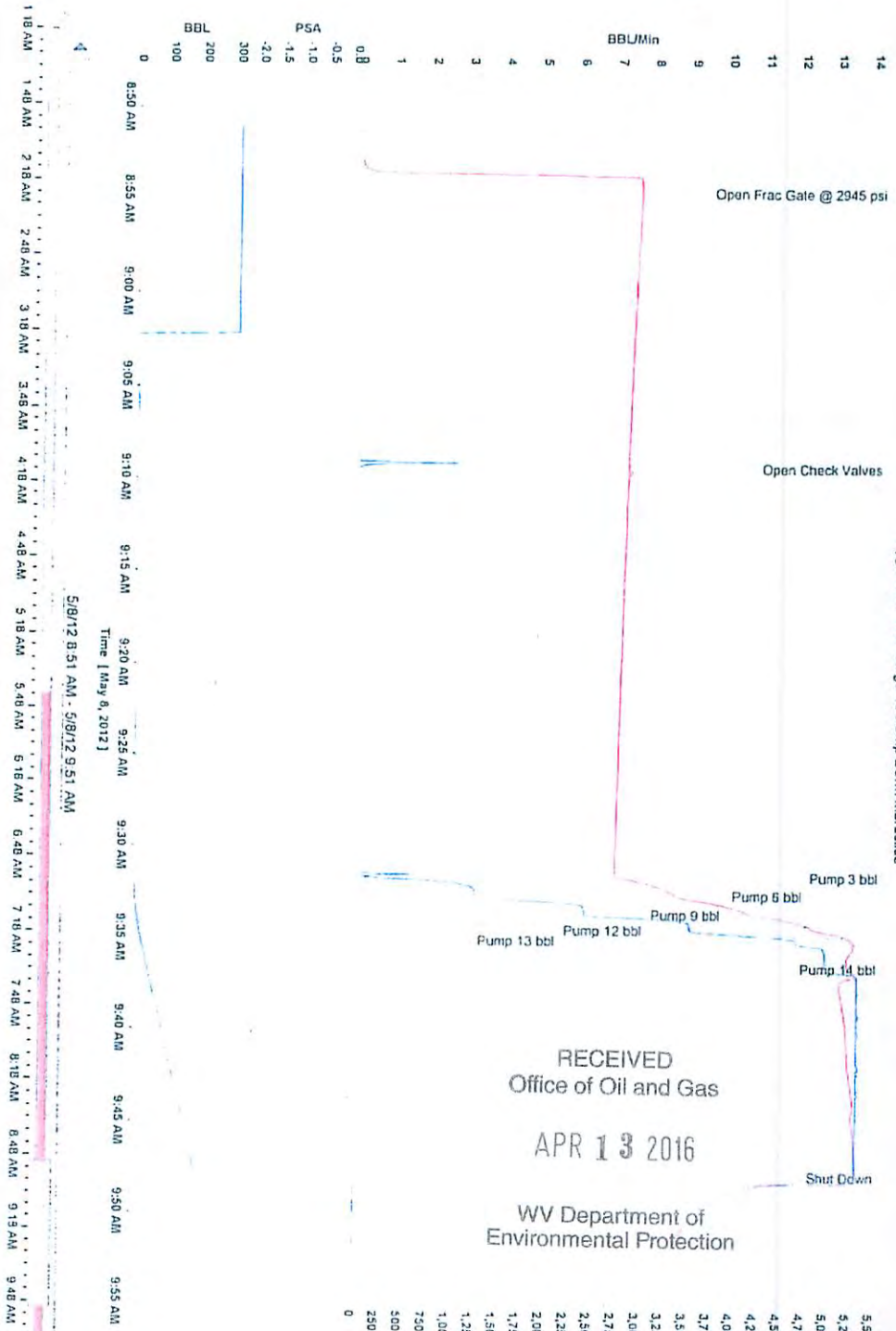
WV Department of
Environmental Protection

Density
 I Well Head PSA
 Flow
 J Well Head Slurry Flow
 Pressure
 K Well Head Pressure
 Quantity
 L Well Head Slurry Stage

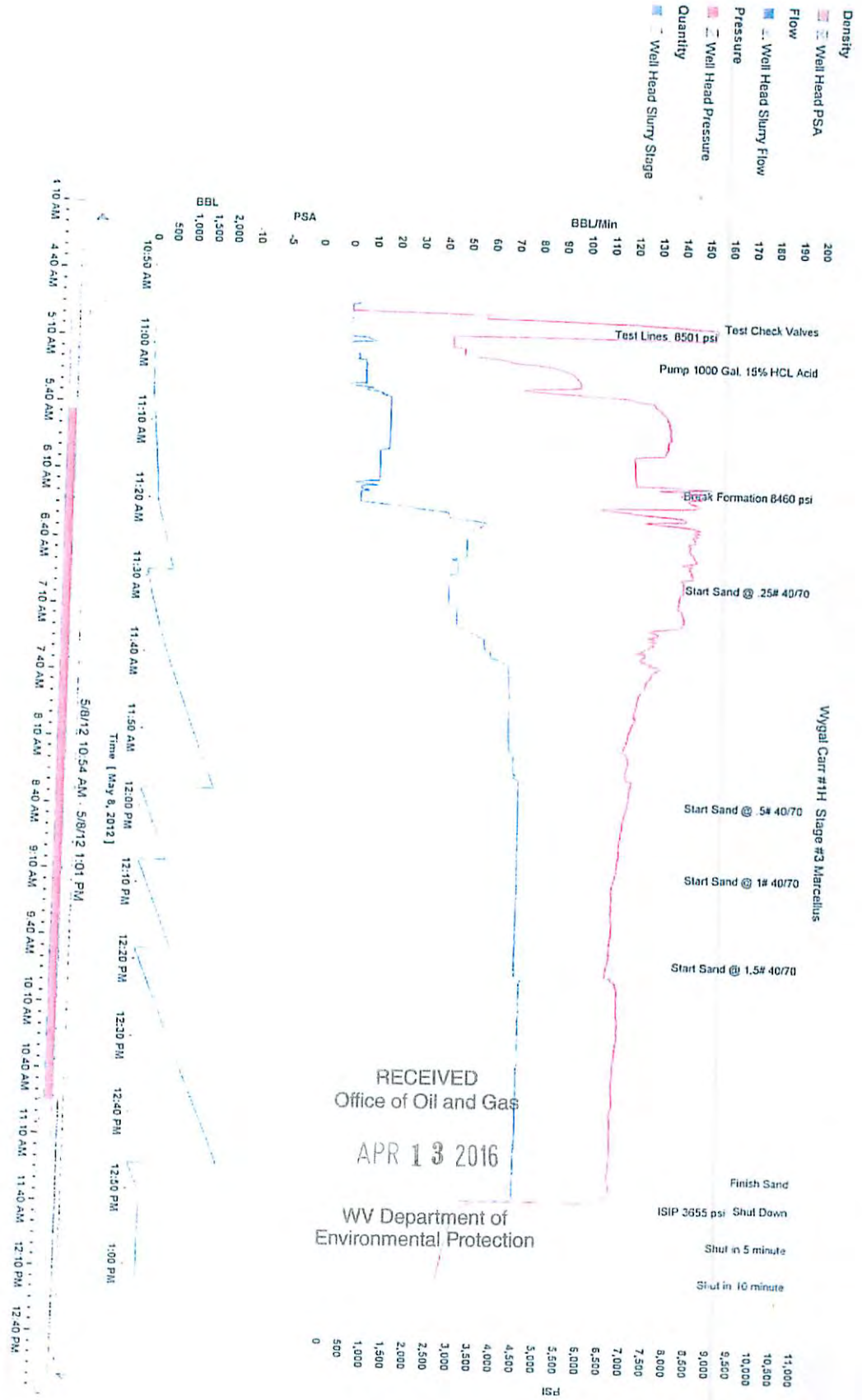


04/22/2016

- Density
- Well Head PSA
- Flow
- Well Head Slurry Flow
- Pressure
- Well Head Pressure
- Quantity
- Well Head Slurry Stage



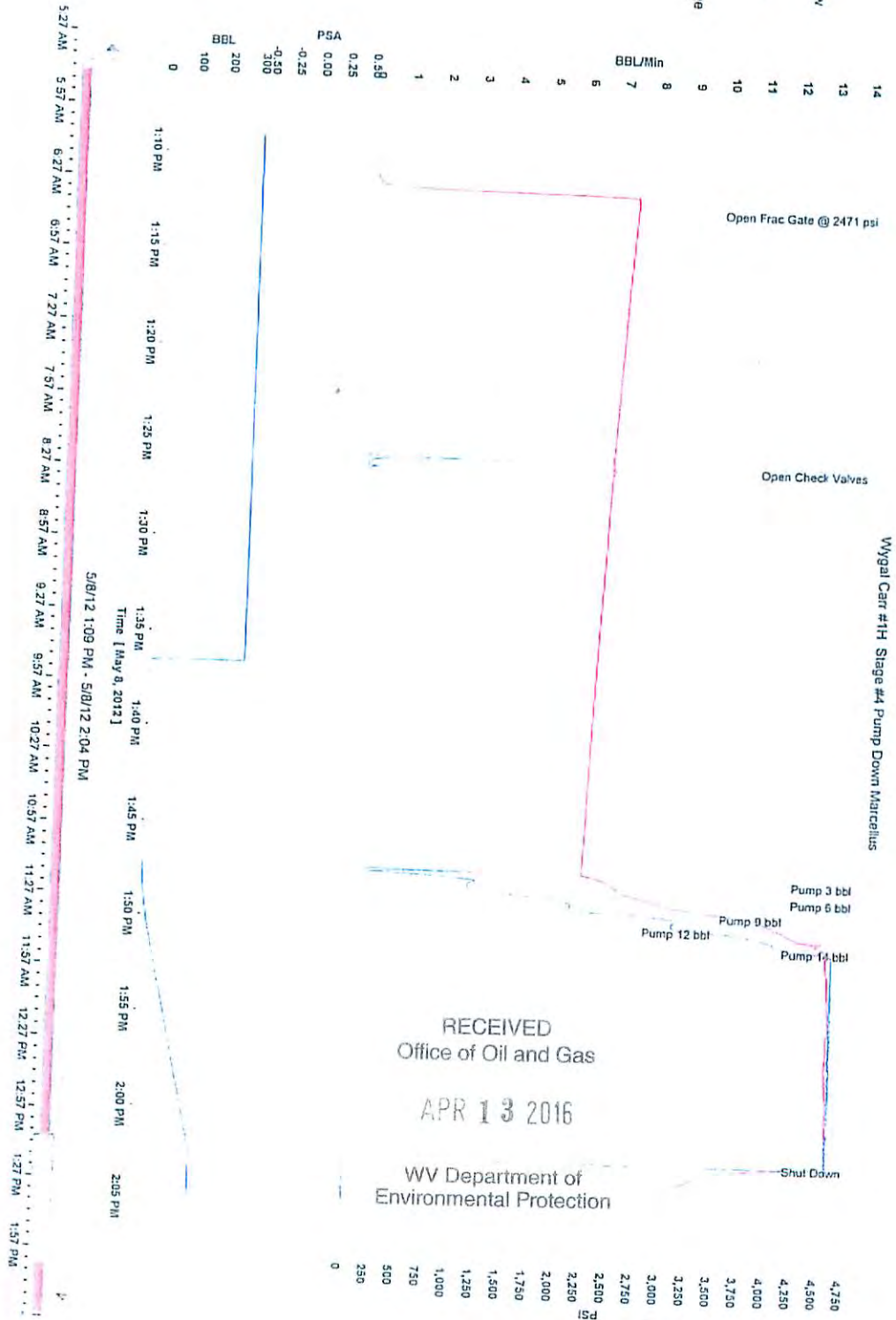
04/22/2016



RECEIVED
Office of Oil and Gas
APR 13 2016
WV Department of
Environmental Protection

04/22/2016

- Density
- Well Head PSA
- Flow
- Well Head Slurry Flow
- Pressure
- Well Head Pressure
- Quantity
- Well Head Slurry Stage



04/22/2016

Density
 Well Head PSA
 Flow
 Well Head Slurry Flow
 Pressure
 Well Head Pressure
 Quantity
 Well Head Slurry Stage

200
 190
 180
 170
 160
 150
 140
 130
 120
 110
 100
 90
 80
 70
 60
 50
 40
 30
 20
 10
 0

2,000
 1,500
 1,000
 500
 0

BBL
 PSA
 1,500
 1,000
 500
 0

1:47 PM 12:12 AM 12:42 AM 1:12 AM 1:42 AM 2:12 AM 2:42 AM 3:12 AM 3:42 AM 4:12 AM 4:42 AM 5:12 AM 5:42 AM 6:12 AM 6:42 AM 7:12 AM 7:42 AM 8:12 AM

5/9/12 6:08 AM - 5/9/12 8:36 AM
 Time [May 9, 2012]

6:10 AM 6:26 AM 6:30 AM 6:40 AM 6:50 AM 7:00 AM 7:10 AM 7:20 AM 7:30 AM 7:40 AM 7:50 AM 8:00 AM 8:10 AM 8:20 AM 8:30 AM 8:40 AM

RECEIVED
 Office of Oil and Gas
 APR 13 2016
 WV Department of
 Environmental Protection

Test Check Valves
 Test Check Valves
 Test Check Valves
 Test Kick Outs @ 3000 psi
 Test Lines 8475 psi
 Pump 1000 Gal 15% HCL Acid
 Open Frac Valve 1300 psi
 Displace Acid
 Start Sand @ .25# 4070
 Start Sand @ .5# 4070
 Start Sand @ 1# 4070
 Start Sand @ 1.5# 4070
 Finish Sand
 ISIP 3582 psi Shut Down
 Shut in 5 minute 2664 psi
 Shut in 10 minute 2461 psi

WYgal Carr #11 Stage #4 Marcellus

1,000
 10,200
 10,000
 9,500
 9,000
 8,500
 8,000
 7,500
 7,000
 6,500
 6,000
 5,500
 5,000
 4,500
 4,000
 3,500
 3,000
 2,500
 2,000
 1,500
 1,000
 500
 0

04/22/2016

| | |
|-------------------------|------------------------------|
| Well Name: Wyal Carr 1H | Perforation Depth: 9483-9674 |
| Stage 4 | Number of Perfs: 36 |
| Date: 5/9/12 | Perforation Size: 0.49" |

| | | | |
|----------------------|------|-----------|-------|
| BREAKDOWN | 7903 | MAXIMUM | 8121 |
| AVERAGE | 6358 | WELL OPEN | 1358 |
| SHUT IN: INSTANT | 3582 | 5-MIN | 2684 |
| | | 15-MIN | NA |
| HYDRAULIC HORSEPOWER | | | |
| USED | | | 11828 |
| DESCRIPTION OF JOB | | | |
| Slickwater Fracture | | | |

| | | | |
|-----------------|------|---------|------|
| LOAD & BKDN | 208 | PAD | 685 |
| TREATMENT | 5525 | DISPL | 300 |
| TOTAL VOLUME | | | 6510 |
| RATES IN B.P.M. | | | |
| AVG TREATING | 75.9 | MAXIMUM | 79.5 |

| Time | Rate (bpm) | Slurry Cum. Volume (bbl) | Slurry Stage Volume (bbl) | Pressure (psi) | Description of Stage or Event |
|---------|------------|--------------------------|---------------------------|----------------|-------------------------------|
| 6:36 AM | NA | NA | NA | 8476 | Pressure Test |
| 6:40 | 6.8 | 0 | 23 | 1368 | Pump Acid |
| 6:44 | 0 | 23 | 685 | 3500 | Pump Pad |
| 6:55 | 13.9 | 208 | NA | 7903 | Break Formation |
| 6:59 | 70.7 | 345 | NA | 7790 | Establish Rate |
| 7:05 | 61.2 | 708 | 1913 | 8081 | Start Sand @ 0.25 40/70 |
| 7:31 | 77.4 | 2621 | 719 | 6302 | Start Sand @ 0.50 40/70 |
| 7:40 | 77.7 | 3340 | 900 | 6177 | Start Sand @ 1.00 40/70 |
| 7:52 | 78.1 | 4240 | 2202 | 6097 | Start Sand @ 1.50 40/70 |
| 8:20 | 79.1 | 6442 | 300 | 5914 | Flush |

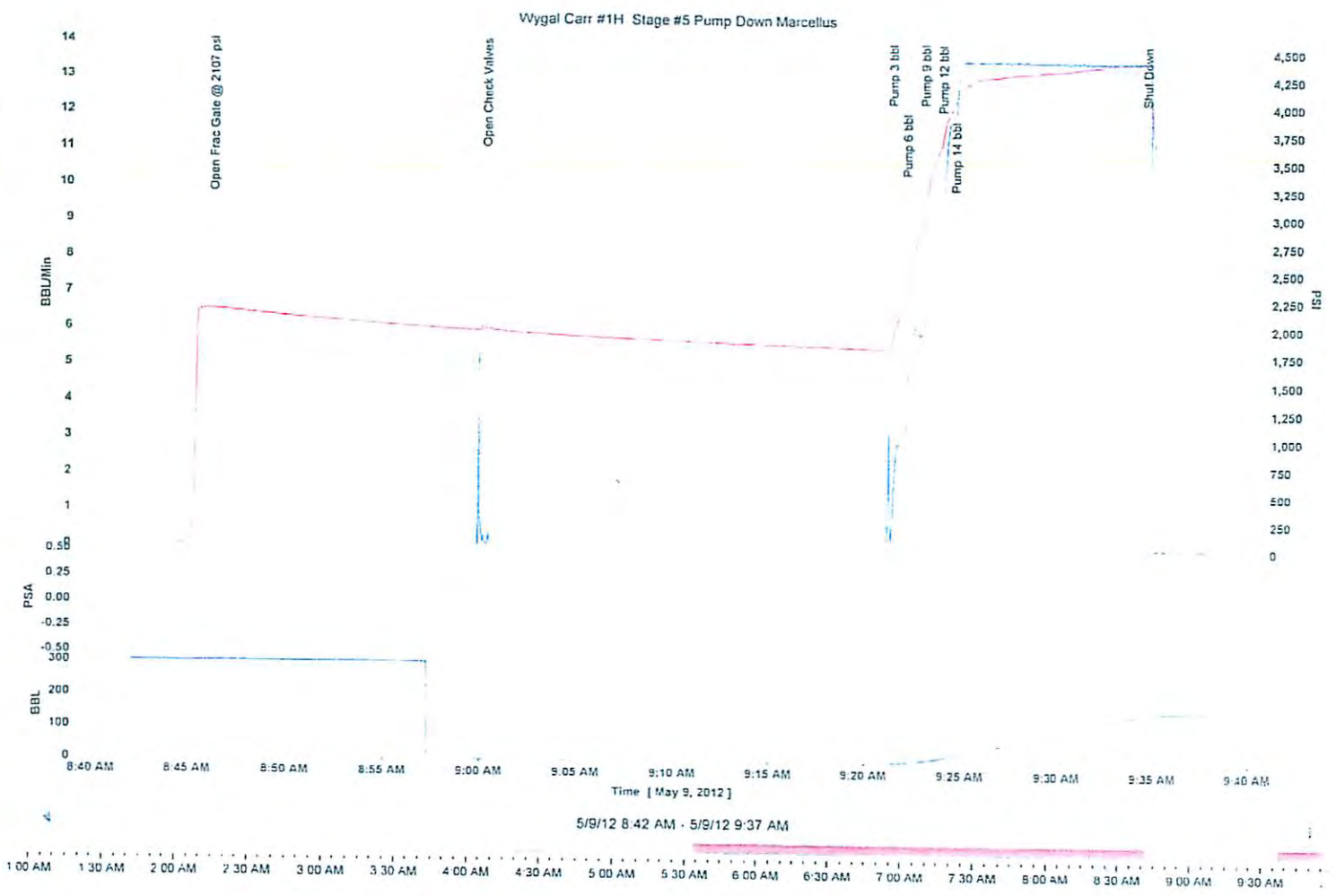
| | | | | | |
|--------|--|--|------|--|---------------------|
| Totals | | | | | |
| | | | | | TOTAL SLURRY VOLUME |
| | | | 6742 | | |

| | | | |
|-----------|-------------------|------|------|
| Sand | 40/70 | 2001 | Sks |
| Chemicals | 15% HCl Acid | 1000 | Gals |
| | EC6116A | 72 | Gals |
| | Scale Inhibitor A | 55 | Gals |
| | Unislik S150 | 276 | Gals |

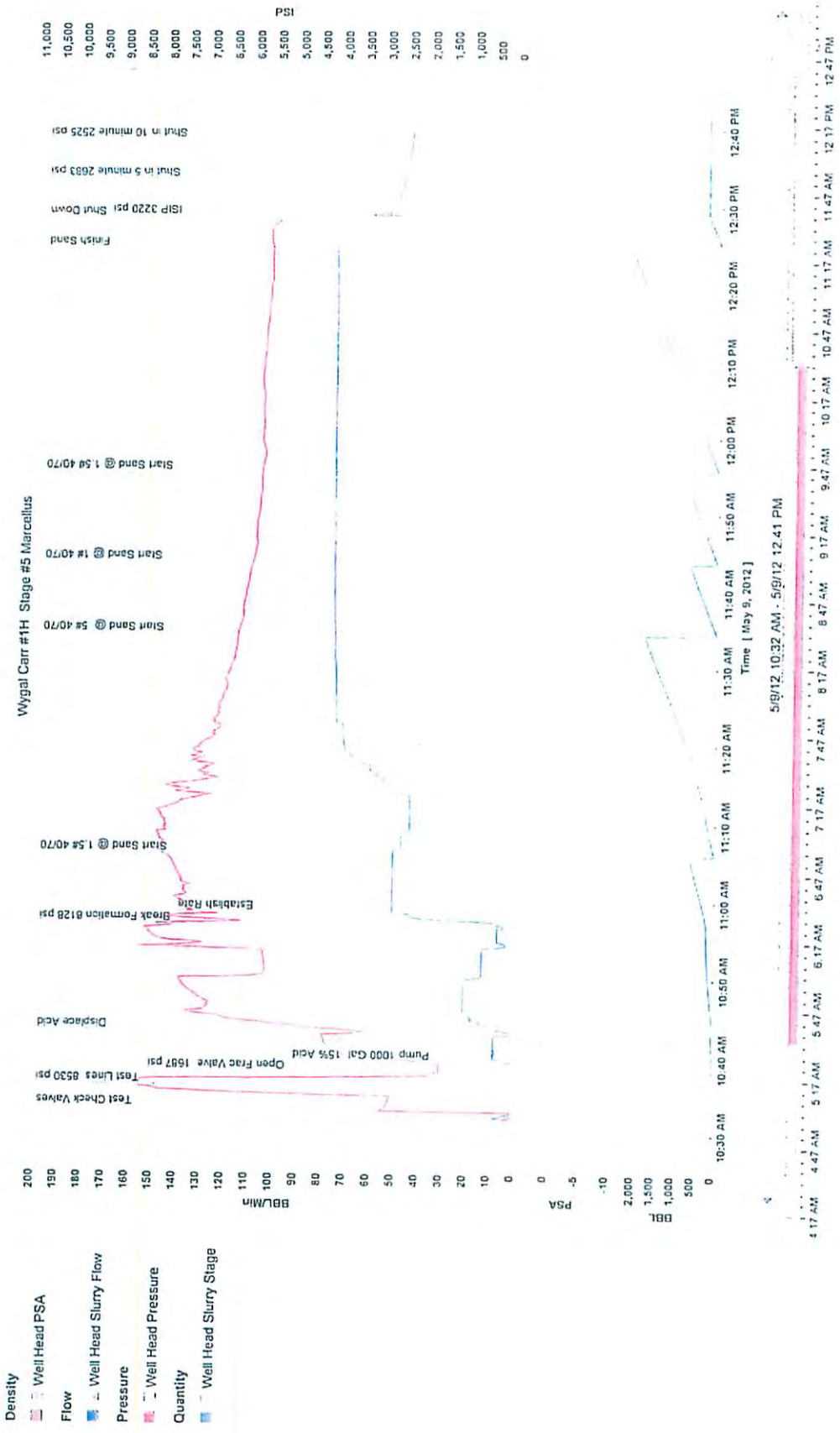


RECEIVED
Office of Oil and Gas
APR 13 2016
WV Department of Environmental Protection

- Density
- Flow
- Pressure
- Quantity

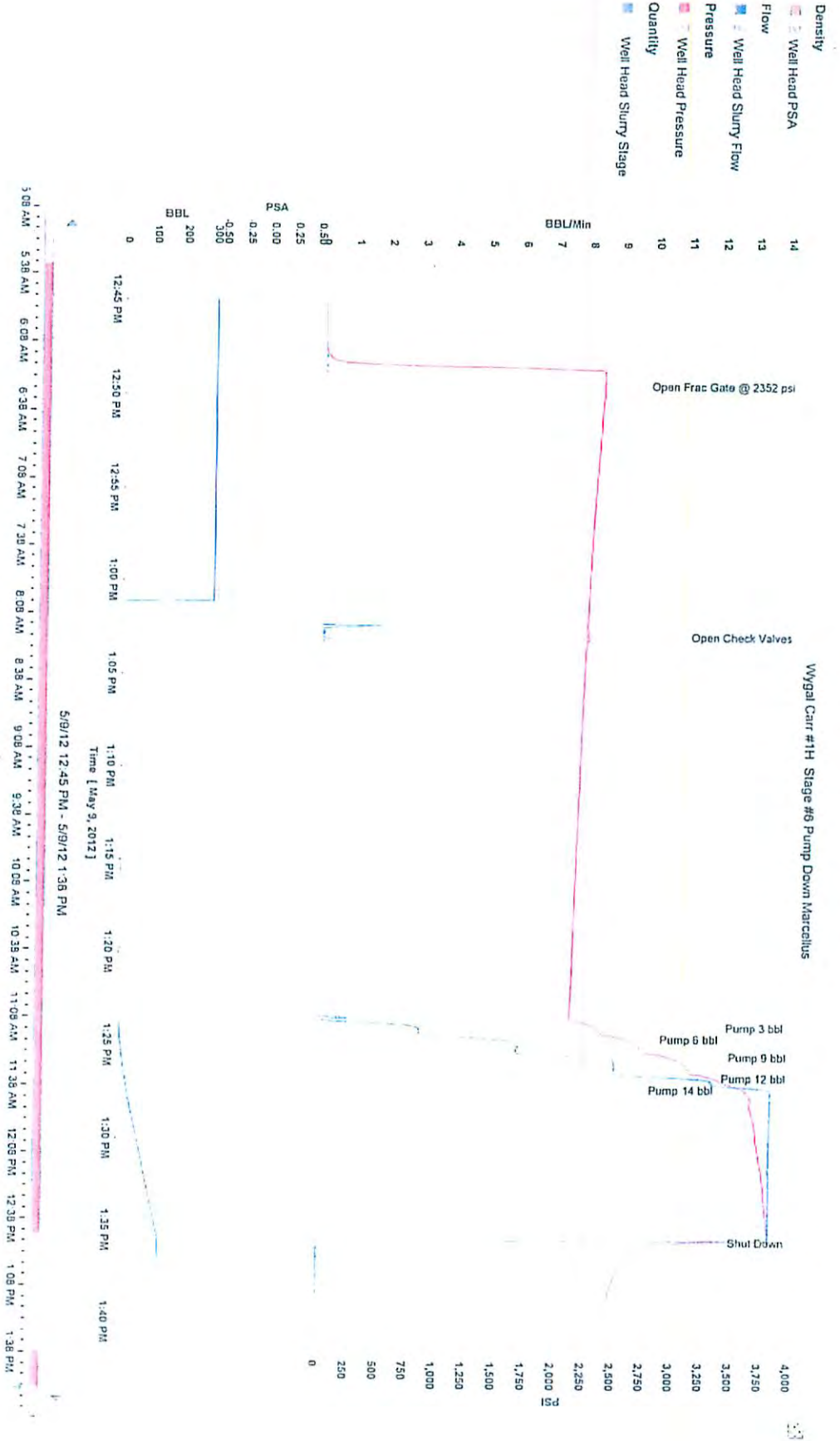


RECEIVED
 Office of Oil and Gas
 APR 13 2016
 WV Department of
 Environmental Protection

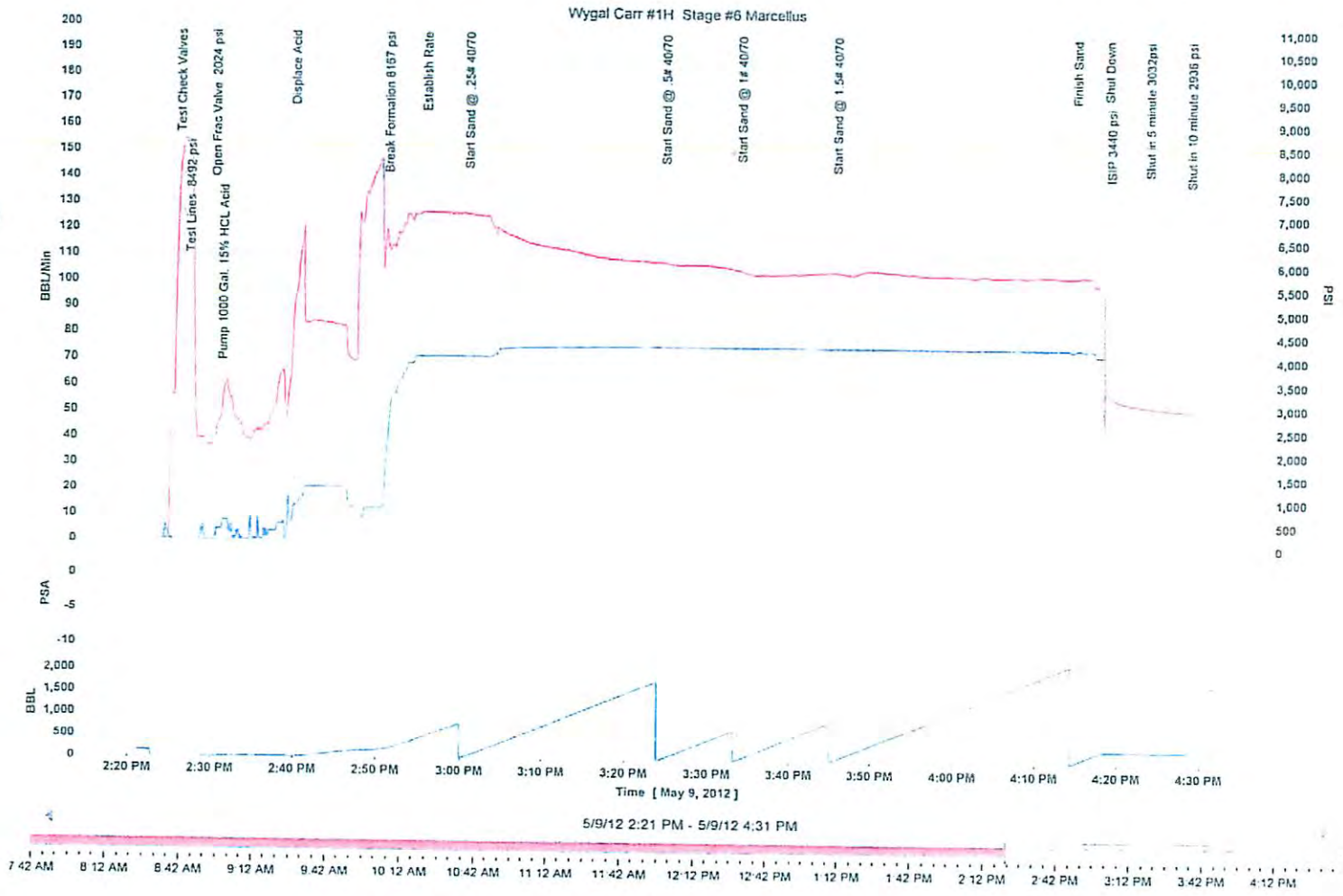


RECEIVED
Office of Oil and Gas
APR 13 2016
WV Department of
Environmental Protection

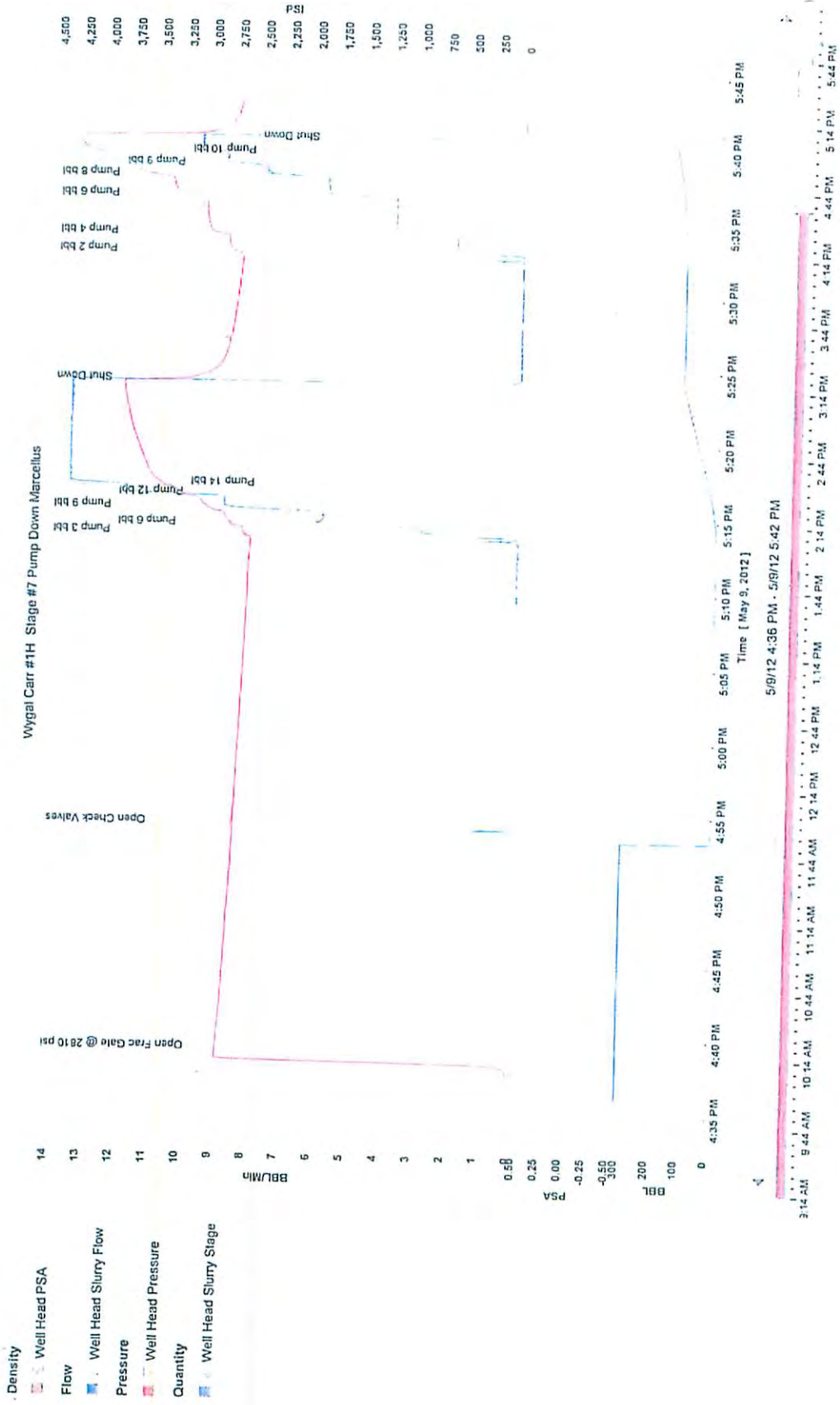
04/22/2016



- Density
- Well Head PSA
- Flow
- Well Head Slurry Flow
- Pressure
- Well Head Pressure
- Quantity
- Well Head Slurry Stage



RECEIVED
Office of Oil and Gas
APR 13 2016
WV Department of
Environmental Protection

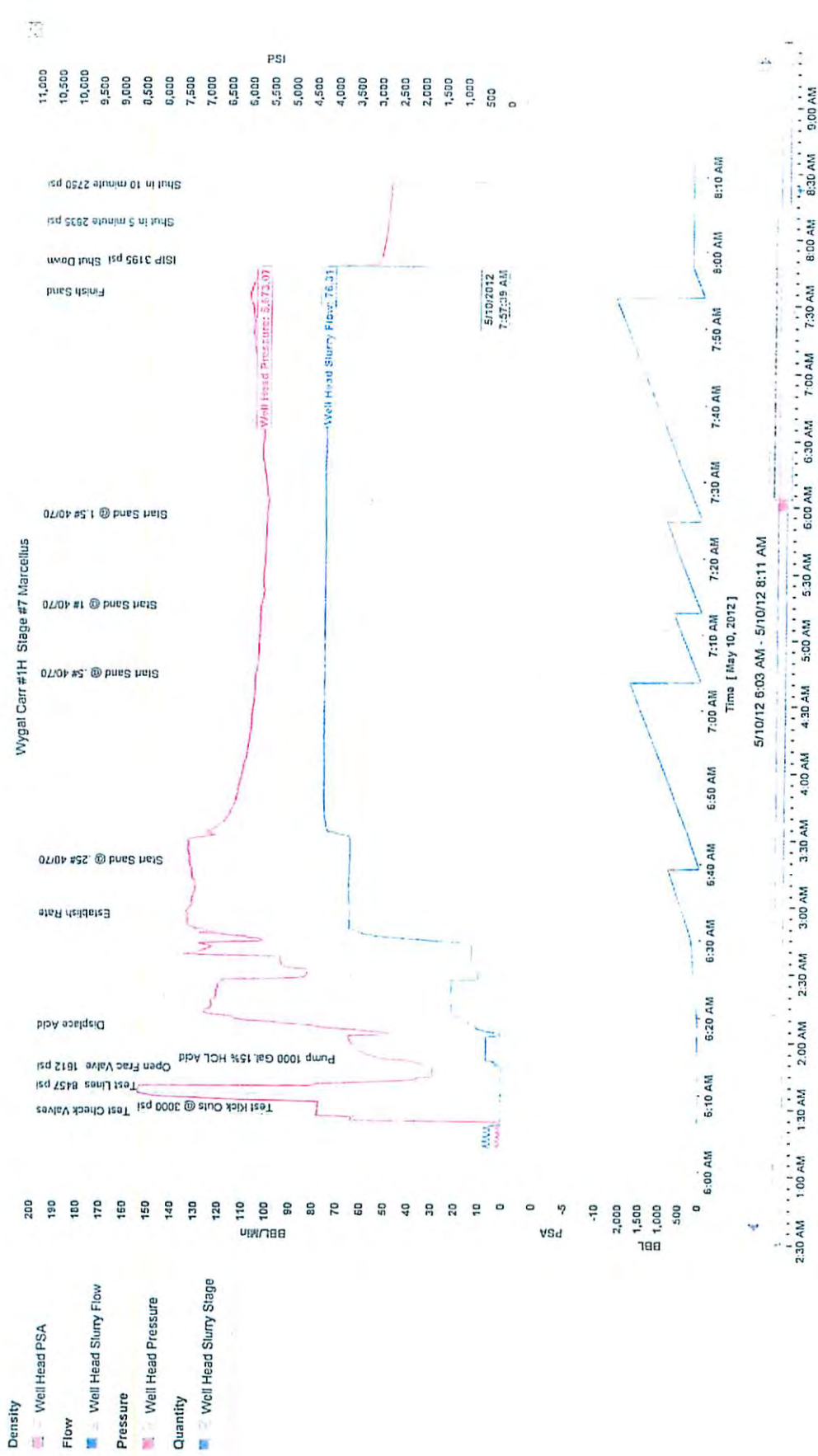


RECEIVED
Office of Oil and Gas

APR 13 2016

WV Department of
Environmental Protection

04/22/2016

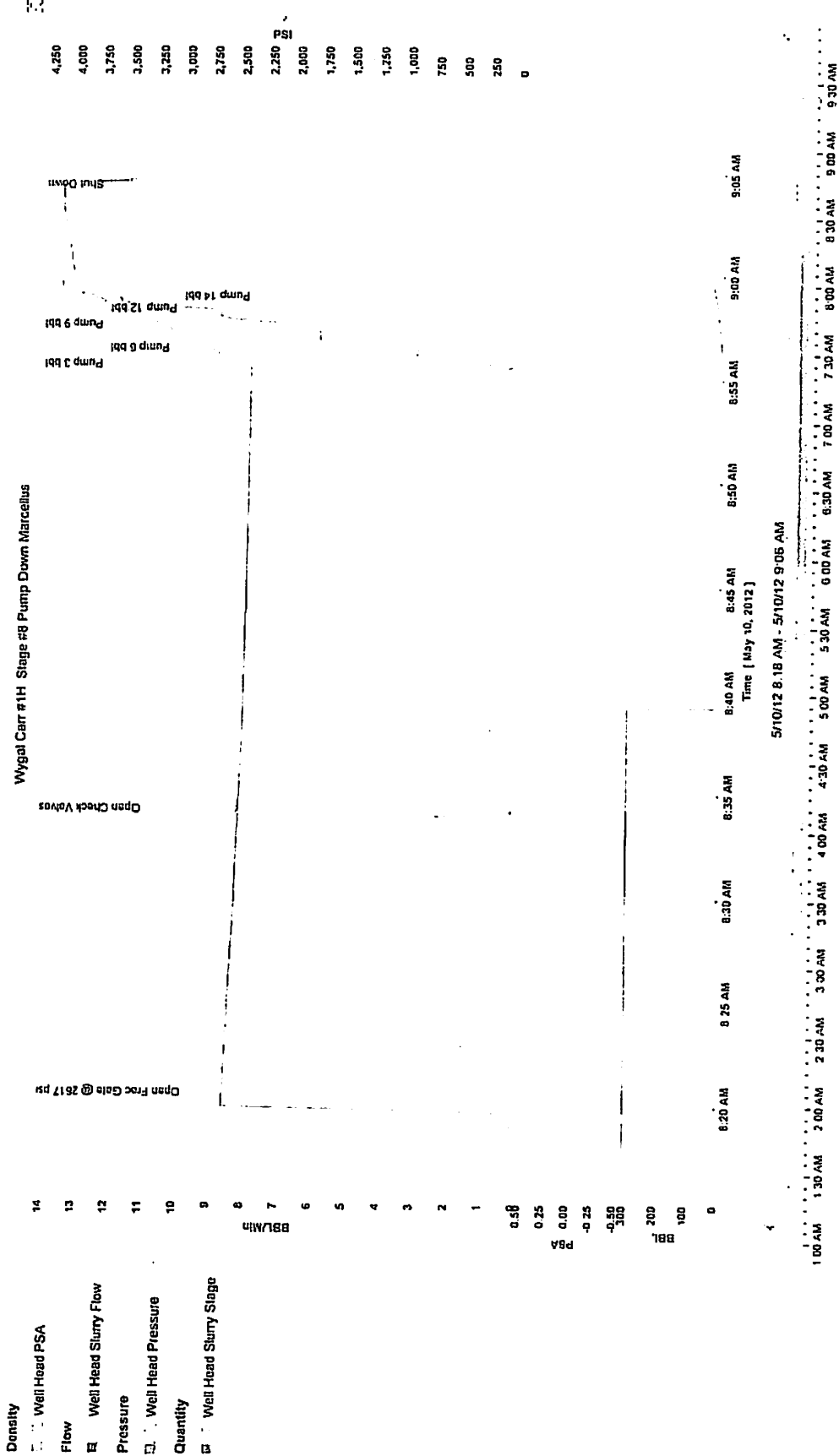


RECEIVED
Office of Oil and Gas

APR 13 2016

WV Department of
Environmental Protection

04/22/2016

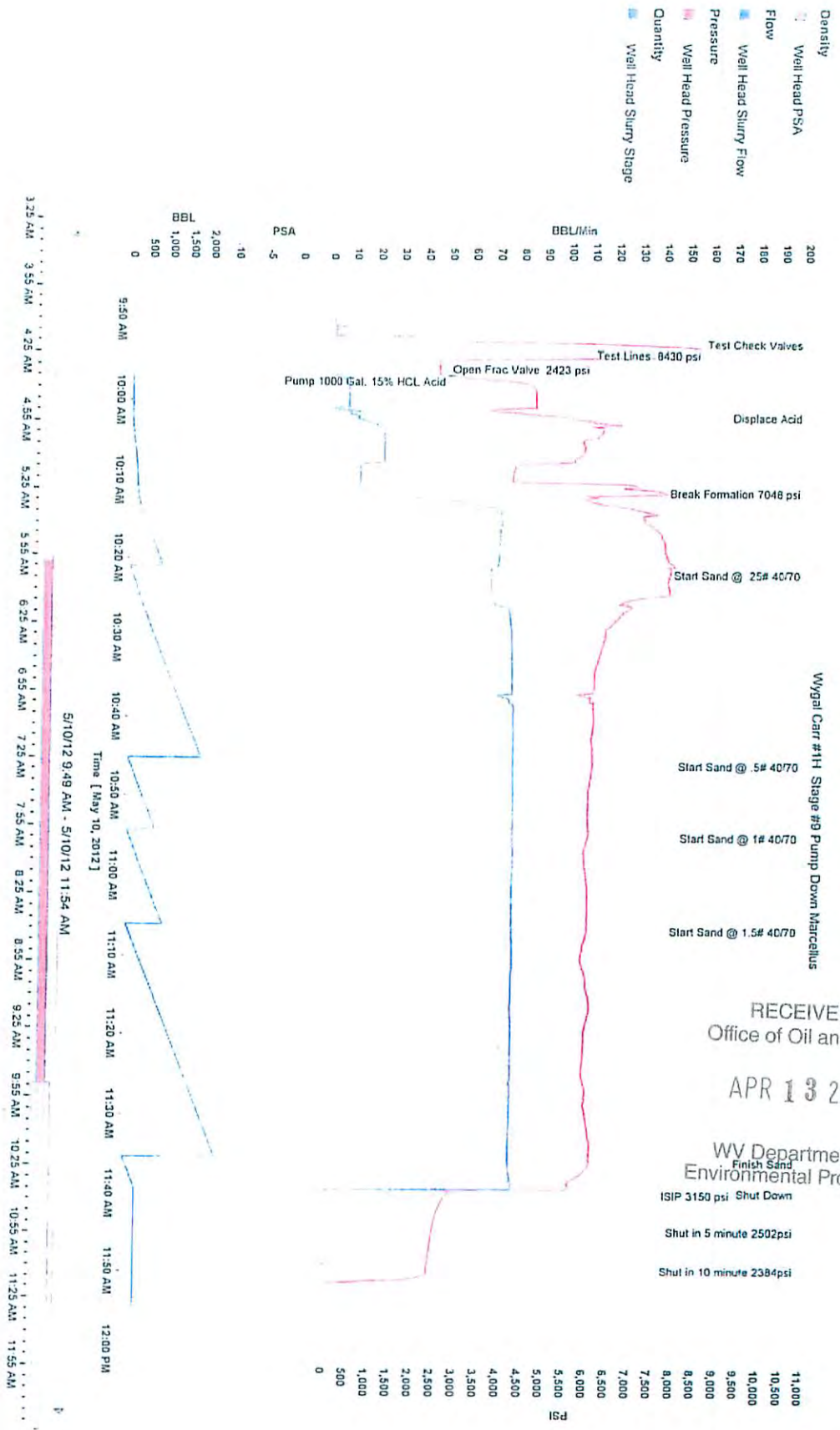


RECEIVED
Office of Oil and Gas

APR 13 2016

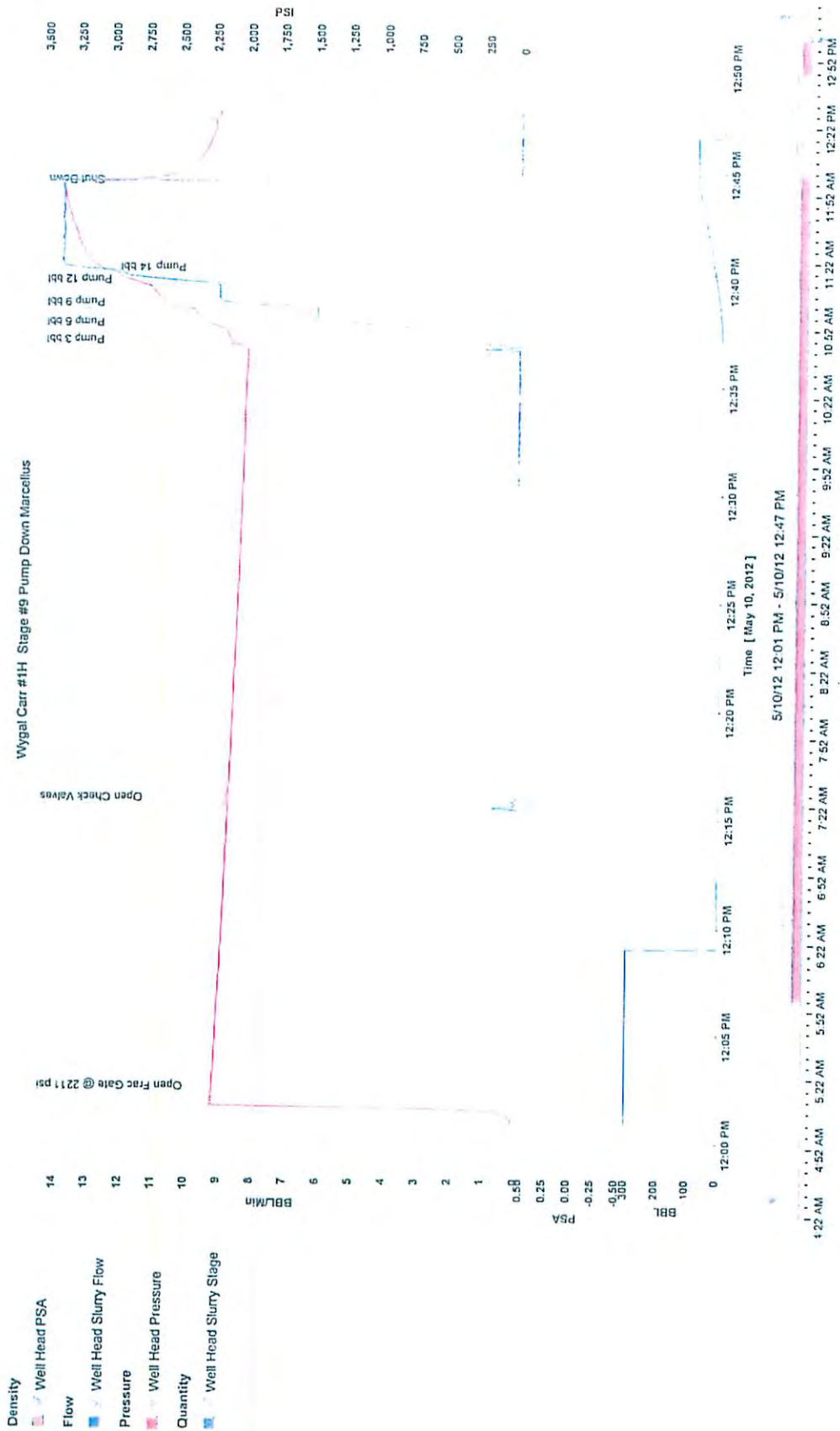
WV Department of
Environmental Protection

04/22/2016



RECEIVED
Office of Oil and Gas
APR 13 2016

WV Department of
Environmental Protection



RECEIVED
Office of Oil and Gas

APR 13 2016

WV Department of
Environmental Protection

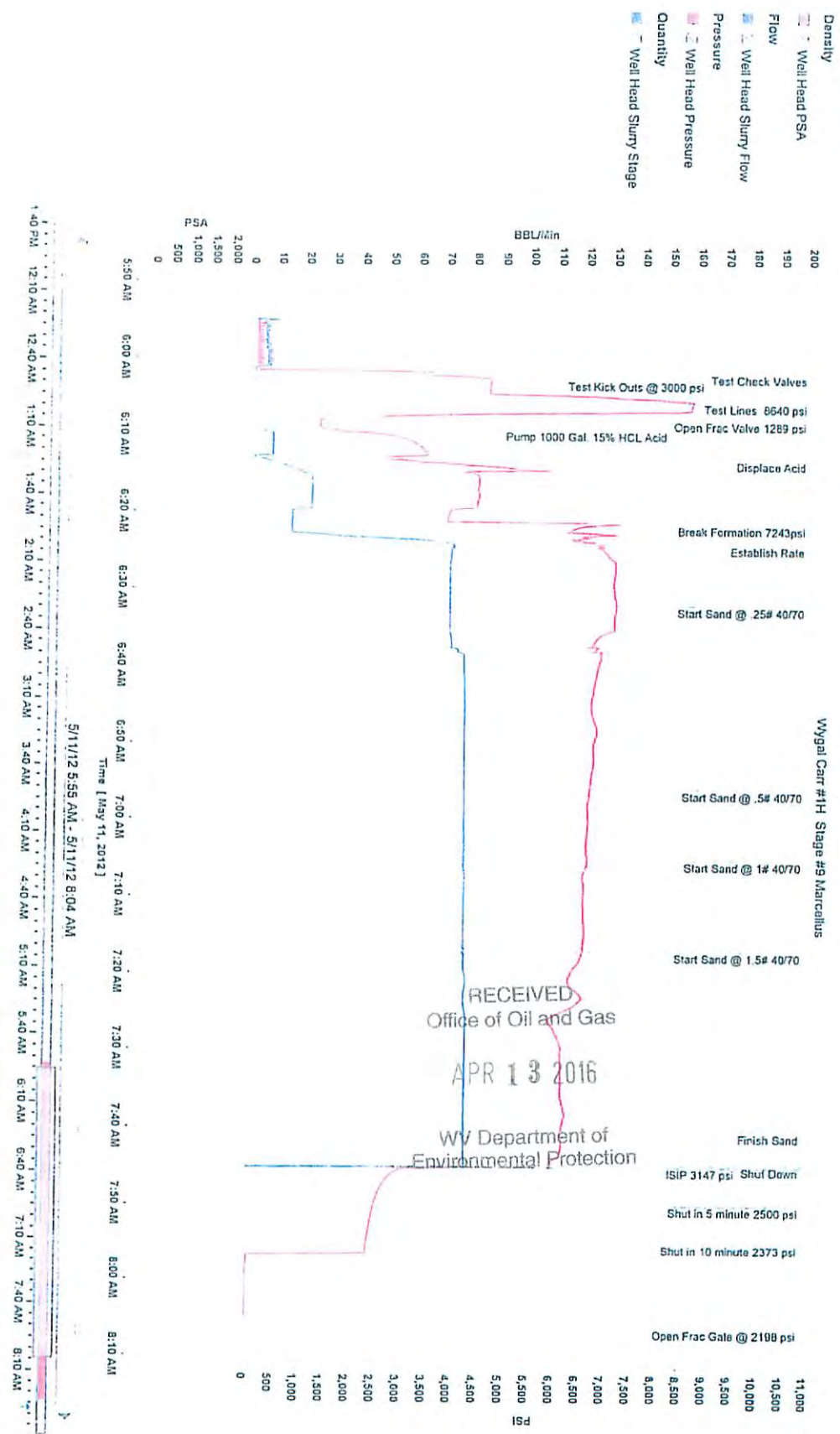
04/22/2016

RECEIVED
Office of Oil and Gas

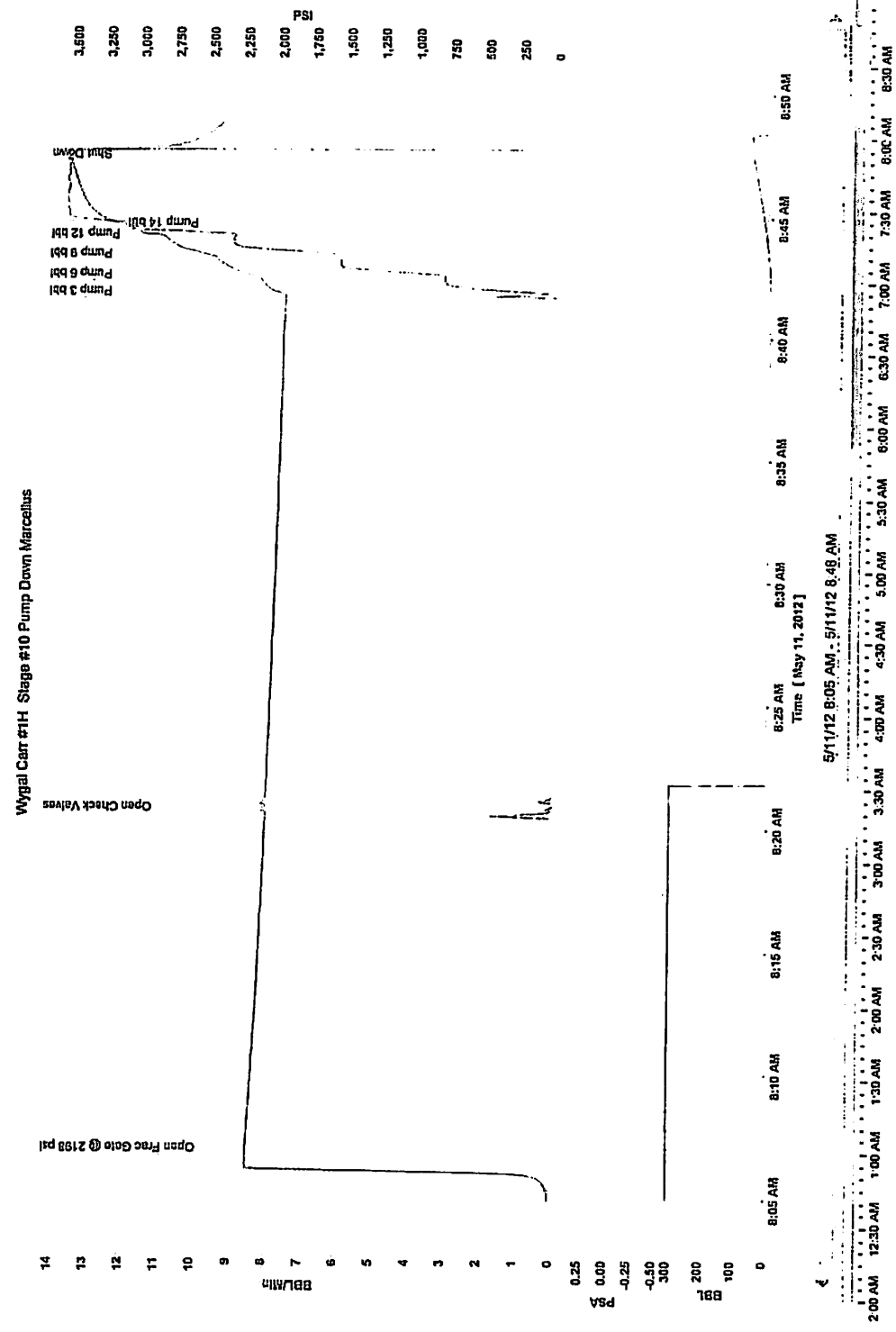
APR 13 2016

WV Department of
Environmental Protection

04/22/2016



Density
 Well Head PSA
 Flow
 Well Head Slurry Flow
 Pressure
 Well Head Pressure
 Quantity
 Well Head Slurry Stage

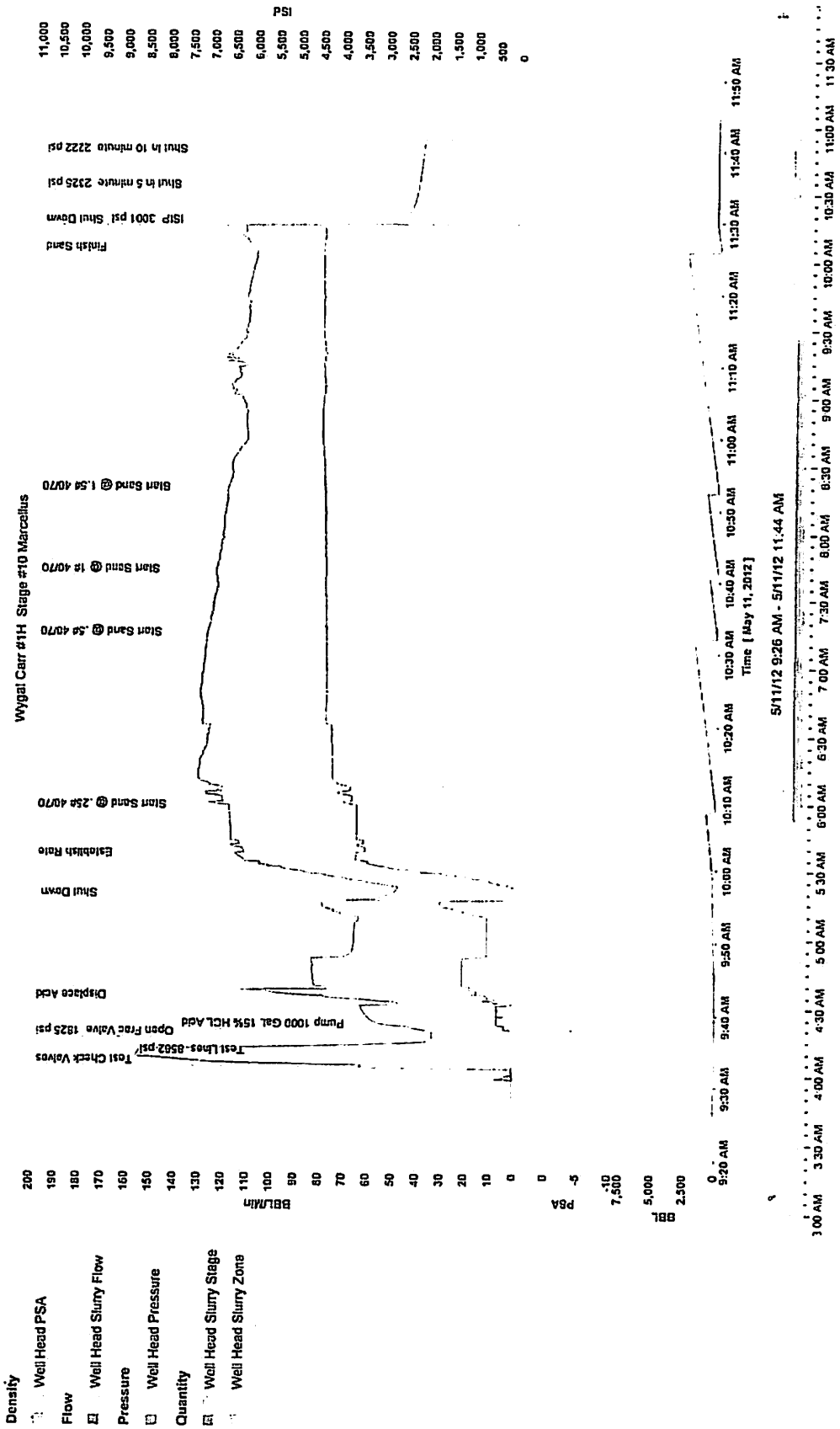


RECEIVED
 Office of Oil and Gas

APR 13 2016

WV Department of
 Environmental Protection

04/22/2016



RECEIVED
Office of Oil and Gas

APR 13 2016

WV Department of
Environmental Protection

04/22/2016