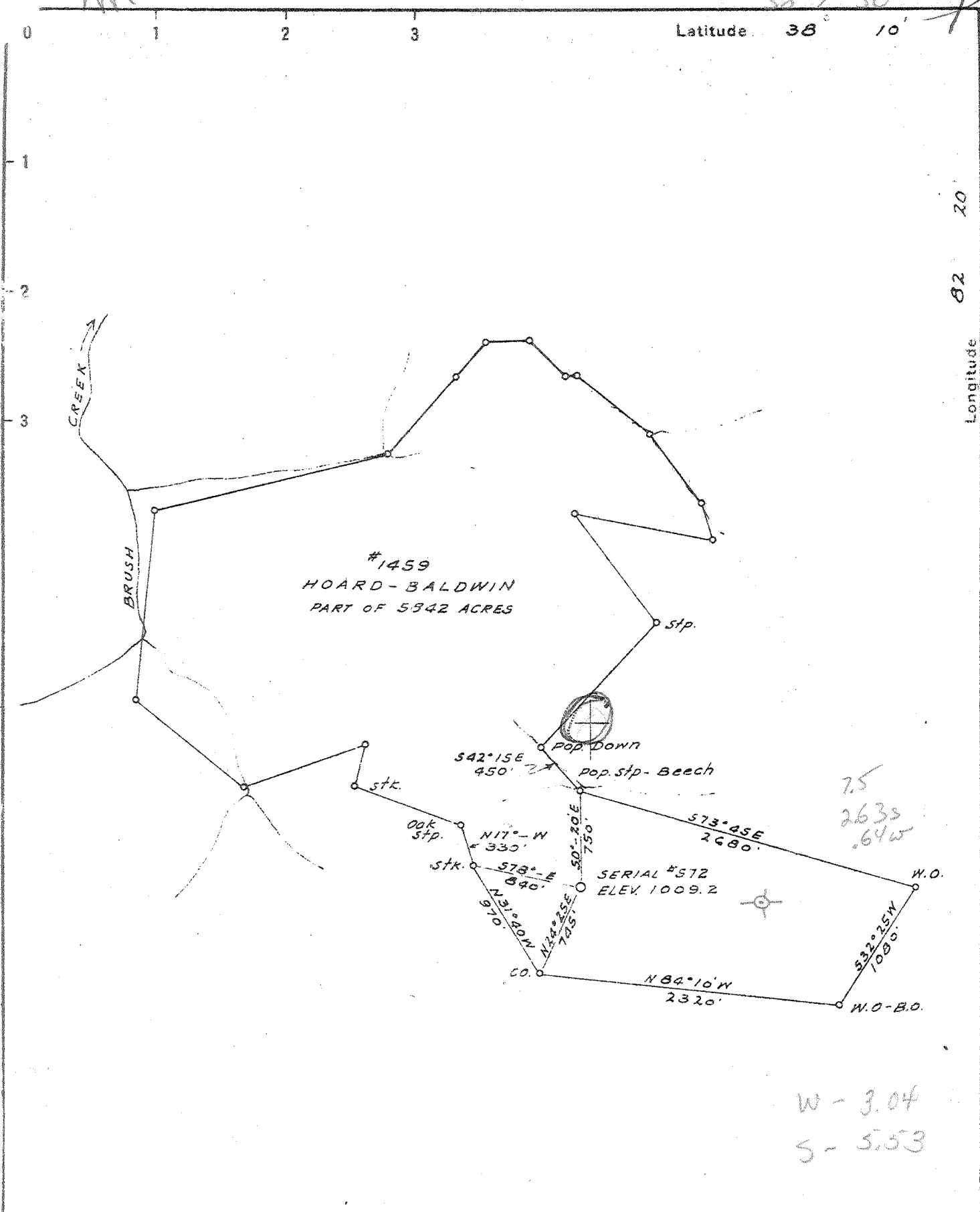


38° 7' 30"

Latitude 38° 10'

Longitude 82° 20'

82° 22' 30"



#1459
HOARD-BALDWIN
PART OF 5842 ACRES

Pop. Down
Pop. stp. - Beech
542°15E 450'
N17°-W 330'

SERIAL #572
ELEV 1009.2

7.5
2635
.64w

W - 3.04
S - 5.53

New Location X
Drill Deeper
Abandonment

Vol. XVI p. 682

Company THE OWENS LIBBEY-OWENS GAS DEPT.
 Address BOX 1375 CHARLESTON W. VA.
 Farm HOARD - BALDWIN
 Tract _____ Acres 5842 Lease No. 1459
 Well (Farm) No. 21 Serial No. 572
 Elevation (Spirit Level) 1009.2
 Quadrangle WAYNE
 County WAYNE District STONEWALL
 Engineer T.S. Flannery
 Engineer's Registration No. 269
 File No. _____ Drawing No. _____
 Date 4-29-40 Scale 1" = 1000'

STATE OF WEST VIRGINIA
DEPARTMENT OF MINES
OIL AND GAS DIVISION
CHARLESTON

WELL LOCATION MAP
FILE NO. WAY-194

+ Denotes location of well on United States Topographic Maps, scale 1 to 62,500, latitude and longitude lines being represented by border lines as shown.

- Denotes one inch spaces on border line of original tracing

Samples discarded

Deep Well

MOORE-BALDWIN NO. 21 (572) WELL.

Stonewall District, Wayne County, W. Va.

By The Owens, Libbey-Owens Gas Dept., Charleston, W. Va.

Located 5.55 mi. S. of 35° 10' and 3.02 mi. S. of 82° 20' - 0 - Wayne Quadrangle.

Elevation, 1009.2' L.

Permit Way-194.

Drilling commenced May 23, 1940; completed, July 15, 1940; shot July 10, 1940;
depth, 1591-1616'.

Gas well; volume, 61,000 cu. ft.; rock pressure, 394 lbs.

8 1/2" casing, 643'; 6 3/4", 1392'.

Fresh water at 328'; salt water at 946'.

Coal was encountered at 325-328, 453-462, 547-551, and 621-624'.

Section based on samples from 1312 to 3362' examined by C. Apocuri.

Martens' record from samples.

Top. Bottom. Thickness.

Top.	Bottom.	Thickness.	Description
MAUCH CRUNK GROUP, 49+ FEET (?)			
1312 - 1328	16	Shale, light-brown, soft, 60%; white, medium-grained sandstone, 40% (driller's record gives dark, hard lime, 1301-1340')	
1328 - 1336	8	Shale and siltstone, gray to light-brown	
1336 - 1341	5	Shale, light-brown; also considerable amount of light-brown dolomite	
1341 - 1361	20	Limestone, brown, fossiliferous (driller's record gives top of "Big Lime" as 1340')	
1361 - 1411	50	Limestone, very light brown; oolitic, 1366-1372' and 1384-1389' (?)	
1411 - 1423	12	Limestone, very light brown, sandy, partly oolitic	
1423 - 1441	18	Limestone, nearly white, somewhat dolomitic	
1441 - 1446	5	Limestone, white, slightly sandy, oolitic	
1446 - 1473	27	Limestone, nearly white; oolitic, 1455-1462'	
1473 - 1489	26	Limestone, greenish, dolomitic; some sandy and chert	
1489 - 1511	22	Limestone, nearly white, oolitic	
1511 - 1527	16	Limestone, very light brown	
1527 - 1543	16	Limestone, very light brown, dolomitic, slightly sandy	
MAURANDY FORMATION, 14 FEET			
1543 - 1557	14	Siltstone, red	
POCONO FORMATION, 603 FEET			
1557 - 1568	11	Siltstone, green	
1568 - 1626	58	Sandstone, white to greenish, very fine, silty	
1626 - 1640	14	Siltstone, gray	
1640 - 2110	470	No samples	
2110 - 2116	6	Shale, gray	
2116 - 2142	26	Shale, dark-gray, pyrite (Sunbury Shale)	
2142 - 2160	18	Sandstone, white, very fine, pyritic (Berea Sandstone; driller's record gives base of Berea at 2170')	
DEVONIAN SHALES, 1197 FEET			
2160 - 3357	1197	Shales, gray to black and dark-brown; also small amounts of siltstone; not described in detail because of incomplete samples	
CHUMBERG OR HERRINGBERG, 5+ FEET			
3357 - 3362	5	Limestone, light-brown, impure; small amount of shaly siltstone rich in biotite (top of driller's "Corniferous" at 3357')	
3362		Total depth	

WEST VIRGINIA DEPARTMENT OF MINES
OIL & GAS DIVISION
W E L L R E C O R D

Permit No. Way-194
Wayne Quad.

Gas Well

CASING & TUBING

Company	The Owens, Libbey-Owens Gas Dept.,	8-1/4	643	643
Address	Box 1375, Charleston, W. Va.	6-5/8	1392	1392
Farm	Heard-Baldwin ACRES -			
Location	Rich Creek	Coal at:		
Well No.	572 ELEV. 1009	325'	36"	
District	Stonewall - Wayne County	459	36	
Surface	Boyd Napier, Ferguson, W. Va.	547	48	
Oil & Gas rights	Owens, Libbey-Owens Gas Dept.	621	36	
Commenced	May 23, 1940			
Completed	July 15, 1940			
Shot	7/10/40 - Depth 1591-1616			
Volume	61,000 c.f.			
Rock Pressure	394 lbs. - final			
Fresh Water	328			
Salt Water	946			

Clay	yl	s	0	12	Slate	bl	s	2044	2054	
Sand	wh	s	12	56	Shell	gr	h	2054	2061	
Slate	gr	s	56	66	Slate	dk	s	2061	2069	
Sand	gr	s	66	141	Shell	gr	h	2069	2095	
Slate	dk	s	141	158	Slate	drk	h	2095	2113	
Sand	wh	s	158	215	Brown Shale	bn	s	2113	2142	
Slate	gr	s	215	240	Berea	gr	h	2142	2160	
Sand	wh	s	240	266	Slate	dk	s	2160	2162	
Slate	gr	s	266	271	Berea	gr	h	2162	2170	
Sand	wh	s	271	291	Lime Shale	dk	h	2170	2179	
Slate	dk	s	291	301	Slate	wh	s	2179	2193	
Sand	wh	s	301	325	Lime Shell	gr	h	2193	2215	
Coal	bk	s	325	328	FW 328	Slate	wh	s	2215	2233
Slate	dk	s	328	358	6 blr. hr.	Shell	dk	h	2233	2253
Sand	wh	s	358	449		Brown Shale	bn	s	2253	2308
Slate	gr	s	449	459		Shell	wh	h	2308	2318
Coal	bk	s	459	462		Slate	gr	s	2318	2531
Slate	bl	s	462	478		Shale	gr	s	2531	2566
Sand	wh	h	478	522		Slate	lt	s	2566	2604
Slate	dk	s	522	547		Shale	bn	s	2604	2667
Coal	bk	s	547	551		Shale	gr	s	2667	2682
Slate	wh	s	551	621		Shale	bn	s	2682	2720
Coal	bk	s	621	624		Slate	gr	s	2720	2768
Slate	gr	s	624	647		Shale	bn	s	2768	2848
Sand	gr	h	647	678		Slate	gr	s	2848	2872
Slate	gr	s	678	708		Shale	bn	s	2872	3063
Sand	wh	h	708	768		Slate	gr	s	3063	3289
Slate	gr	s	768	789		Shale	bn	s	3289	3357
Sand	wh	h	789	812		Corniferous	gr	h	3357	3362
Slate	dk	s	812	864		Total Depth			3362	
Salt Sand	wh	h	864	1000	HFSW 946					
Slate&Shells	gr	h	1000	1024						
Salt Sand	wh	h	1024	1203						
Slate	wh	s	1203	1228						
Sand	gr	h	1228	1238						
Slate	dk	s	1238	1301						
Lime	dk	h	1301	1340						
Big Lime	gr	h	1340	1355						
Big Lime	wh	h	1355	1392						
Big Lime	wh	h	1392	1550						
Red Sand	rd	s	1550	1557						
Injun Sand	gr	h	1557	1621	Gas 1595-					
					1610					
					53,000 cf					
Slate&Shells			1621	1659						
Slate&Shells	bl		1659	1690						
Slate&Shells	gr	s	1690	1778						
Slate&Shells	dk	s	1778	1943						
Slate	dk	s	1943	1981						
Lime Shells	dk	h	1981	2044						

3357
1009

2348