

New Location   
 Drill Deeper  
 Abandonment  issued 4-17-75

**Pip Petroleum Corporation**  
 Company ~~The Charities Oil Co.~~  
 Address ~~Wayne, West Virginia~~  
~~Pittsburgh, Pa. 25570~~  
 Farm Morgie Hall  
 Tract \_\_\_\_\_ Acres 33.37 Lease No. \_\_\_\_\_  
 Well (Farm) No. 1 Serial No. \_\_\_\_\_  
 Elevation (Spirit Level) 937.90  
 Quadrangle Wayne NW  
 County Wayne District Butler  
 Engineer H.S. Luing  
 Engineer's Registration No. \_\_\_\_\_  
 File No. \_\_\_\_\_ Drawing No. \_\_\_\_\_  
 Date 2-6-41 Scale 1" = 400'

STATE OF WEST VIRGINIA  
 DEPARTMENT OF MINES  
 OIL AND GAS DIVISION  
 CHARLESTON

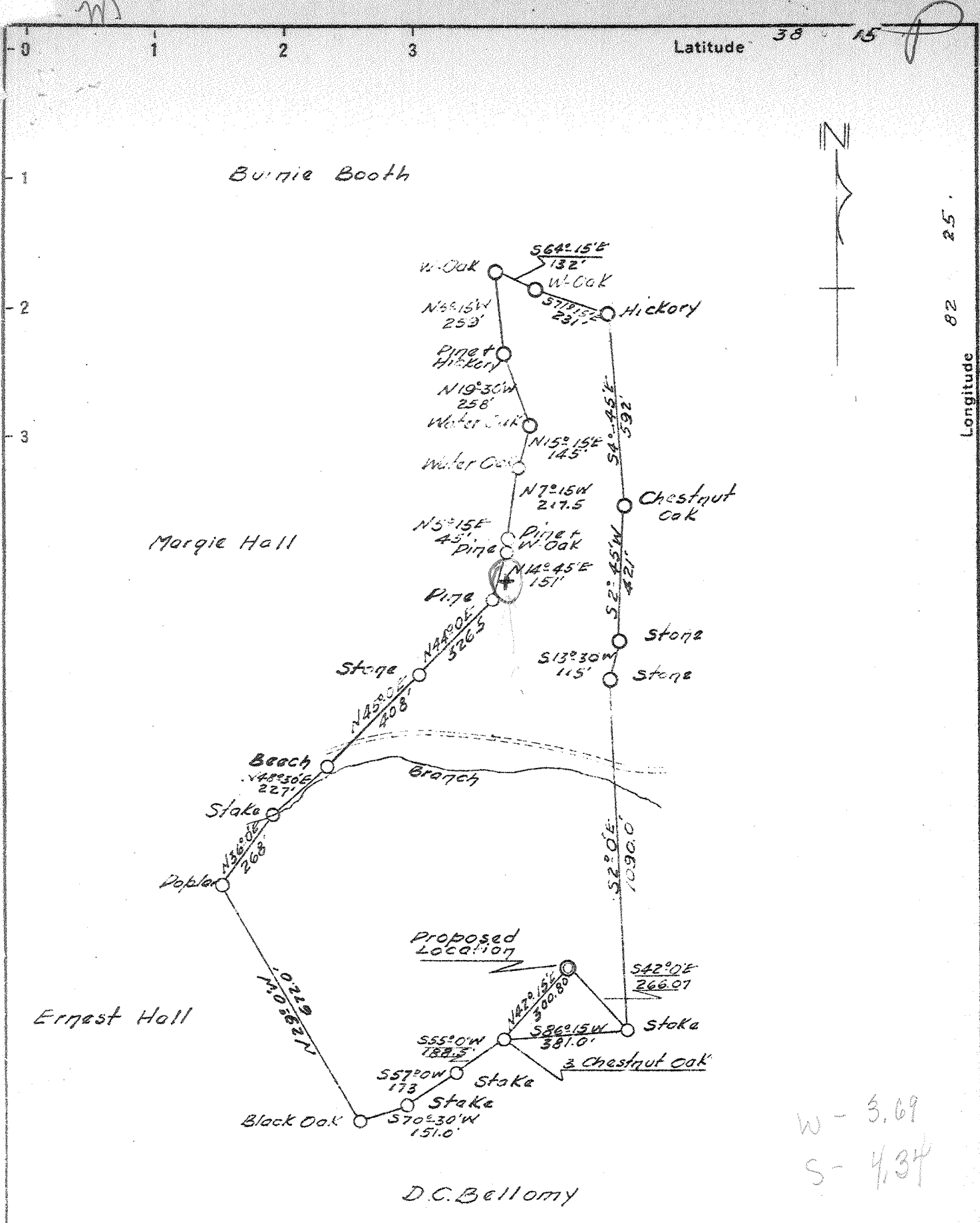
WELL LOCATION MAP  
 FILE NO. WAY-235-P

+ Denotes location of well on United States Topographic Maps, scale 1 to 62,500, latitude and longitude lines being represented by border lines as shown.

- Denotes one inch spaces on border line of original tracing.

47-099 APR 30 1975

Deep Well



W - 3.69  
S - 4.34

New Location X  
Drill Deeper  
Abandonment

Vol. VII, P. 666  
See sketch

Company The Chartiers Oil Co.  
 Address Pittsburgh, Pa.  
 Farm Margie Hall  
 Tract Acres 33.37 Lease No. \_\_\_\_\_  
 Well (Farm) No. 1 Serial No. \_\_\_\_\_  
 Elevation (Spirit Level) 937.90  
 Quadrangle Wayne  
 County Wayne District Butler  
 Engineer H. J. Lane  
 Engineer's Registration No. \_\_\_\_\_  
 File No. \_\_\_\_\_ Drawing No. \_\_\_\_\_  
 Date 2-6-41 Scale " = 400'

STATE OF WEST VIRGINIA  
DEPARTMENT OF MINES  
OIL AND GAS DIVISION  
CHARLESTON

WELL LOCATION MAP  
FILE NO. WAY-235

+ Denotes location of well on United States Topographic Maps, scale 1 to 62,500, latitude and longitude lines being represented by border lines as shown.

- Denotes one inch spaces on border line of original tracing.

Deep Well

WEST VIRGINIA DEPARTMENT OF MINES  
OIL & GAS DIVISION  
W E L L R E C O R D

Permit No. Way-235  
Wayne Quac.

Gas Well

Company	Chartiers Oil Company	CASING & TUBING	
Address	919 Farmers Bk. Bldg., Pittsburgh, Pa.	10	448
Farm	Margie Hall, et al ACRES 34	8-1/4	1340 1340
Location	Patrick's Creek	6-5/8	2379 2379
Well No.	1 ELEV. 937.90	5-3/16	3532 3532
District	Butler - Wayne County	2	3943 3943
Surface & Mineral	Margie Hall, et al, Wayne, W. Va. RL	Packer - Midget Lead & Rubber	
Commenced	March 4, 1941	Size - 8-1/4x10	
Completed	May 10, 1941	Depth set - 1340	
Shot	"	200' of 5-3/16 casing cemented Apr. 24, 1941	
Open Flow	11/10ths W in 2"		
Volume	160,000 c.f.		
Rock Pressure	1280 lbs. 24 hrs.		
Water	"		

Clay-Shale	0	65	
Rock - red	65	75	
Shale - blue	75	160	
Sand	160	192	
Shale	192	300	
Sand - white	300	445	W 390 lbr.
Shale - blue	445	463	per hour
Sand-Shale	463	540	HFV 420
Shale	540	555	
Sand	555	590	
Shale - grey	590	632	
Coal Blossom	632	635	
Sand-Shale	635	697	
Sand	697	745	
Shale - black	745	790	
Shale - white	790	800	
Sand Shale	800	840	
Sand - white	840	915	
Shale - grey	915	965	
Sand	965	1000	
Sand Break	1000	1005	
Salt Sand	1005	1140	W 1030
Shale - dark	1140	1165	
Sand	1165	1297	
Shale - grey	1297	1322	
Little Lime	1322	1333	
Pencil Cave	1333	1335	
Big Lime	1335	1537	Gas 1447
Lime Break	1537	1540	
Shall	1540	1550	
Shale - blue	1550	1568	
Injun Sand	1568	1684	Little Gas 1572 to 1684
Shale - blue	1684	2070	
Sand Shells	2070	2095	
Sand - white	2095	2126	
Shale - dark	2126	2143	
Berea Grit	2143	2155	Gas 2145 150,000 c.f.
Shale - grey	2155	2170	
Shale-Shells	2170	2242	SLM 2164
Rock - red	2242	2250	
Shale - white	2250	2260	
Shale - black	2260	2346	
Shale - white	2346	2353	
Shale - black	2353	2370	
Shale - white	2370	2490	
Shale - black	2490	2750	
Shale - brown	2750	2985	
Shale - white	2985	3185	
Shale - brown	3185	3216	
Niagara Lime	3216	3946	Poison Gas 3380
Total Depth		3946	Show Gas 3692

3216  
938  
-----  
2278