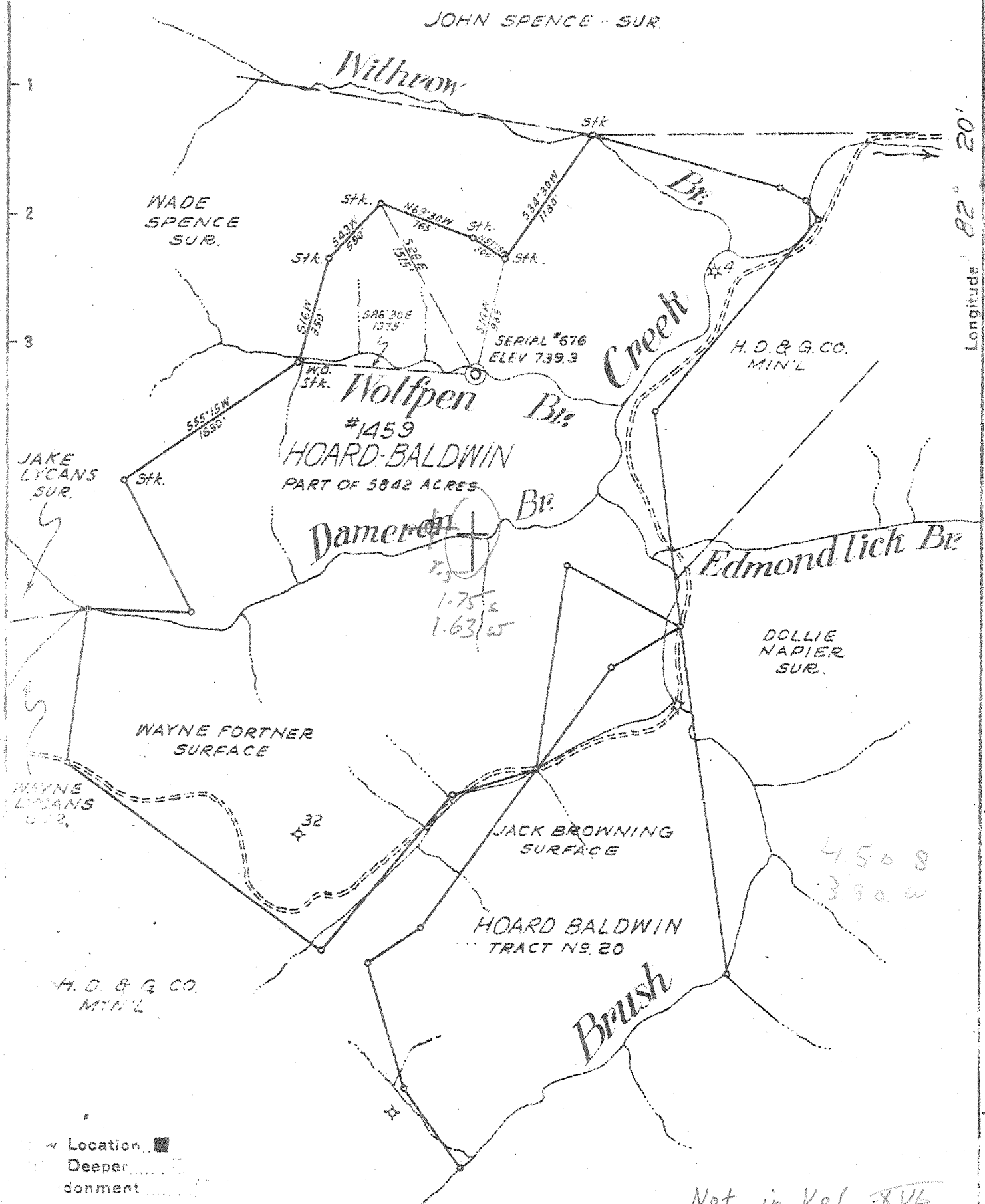


38° 7' 30" / 10

Latitude 38 10

Longitude 82° 20' 30"

JOHN SPENCE - SUR.



7.5  
1.75  
1.631W

4.508  
3.90W

Not in Vol. XVI

Company THE OWENS, LIBBEY-OWENS GAS DEPT.  
 Address BOX 2111 CHARLESTON 28, W. VA.  
 Name HOARD BALDWIN  
 Tract Acres 5842 Lease No. 1459  
 Well (Farm) No. 33 Serial No. 676  
 Elevation (Spirit Level) 739.3  
 Quadrangle WAYNE  
 County WAYNE District STONEWALL  
 Engineer T.S. Fournoy  
 Engineer's Registration No. 269  
 File No. 0 Drawing No. 0  
 Date MARCH 3, 1944 Scale 1 IN = 1000 FT.

STATE OF WEST VIRGINIA  
 DEPARTMENT OF MINES  
 OIL AND GAS DIVISION  
 CHARLESTON

WELL LOCATION MAP  
 FILE NO. Way-313

+ Denotes location of well on United States Topographic Maps, scale 1 to 62,500, latitude and longitude lines being represented by border lines as shown.  
 - Denotes one inch spaces on border line of original tracing

Imperial Tracing Co. 500 4th St. N.Y. 500 4th St. N.Y. 10014 Deep Well

WEST VIRGINIA DEPARTMENT OF MINES  
OIL & GAS DIVISION  
W E L L R E C O R D

Permit No. Way 313		Dry Hole
Wayne Quad.		CASING & TUBING
Company	The Owens, Libbey-Owens Gas Dept.	
Address	P.O. Box 2111, Charleston 28, W.Va.	10 $\frac{3}{4}$ 28 0
Farm	Hoard-Baldwin Acres 5842	83/4 180 0
Location	Brush Creek	7 1145 0
Well No.	676 Elev. 739.3	
District	Stonewall Wayne County	Coal at 86' 24"
Surface	P.H. Napier, Ferguson, W.Va.	
Oil & Gas	The Owens, Libbey-Owens Gas Dept. Box 21111 Charleston 28, W.Va.	
Commenced	5-31-44	
Completed	7-17-44	
Date shot	7-20-44 Depth 1996 to 2850 with 8300# Detonite	
Volume	None	
Fresh Water	54' H.F.: level 20'	
Salt Water	700' Hole filling: 883' Stood at 175' Stood at 220'	

Surface	Y	S	0	32	
Sand	Gr	S	32	76	
Slate	Lt	S	76	86	
Coal	Bk	S	86	88	
Slate	Lt	S	88	134	
Sand	Wh	S	134	176	
Slate	Lt	S	176	195	
Sand	Wh	S	195	222	
Slate	Lt	S	222	227	
Sand	Wh	S	227	237	
Slate	Wh	S	237	257	
Sand	Lt	S	257	288	
Slate	Lt	S	288	308	
Sand	Wh	S	308	338	
Slate	Lt	S	338	344	
Sand	Wh	S	344	586	
Slate	Dk	S	586	646	
Salt Sand	Wh	S	646	1012	Gas show 646- 1012
Slate	Dk	S	1012	1017	
Maxon Sand	Wh	H	1017	1066	
Slate	Bl	S	1066	1078	
Red Rock	R	S	1078	1083	
Slate	Bl	S	1083	1103	
Lime	Dk	H	1103	1126	
Big Lime	Lt	H	1126	1308	
Injun Sand	Dk	M	1308	1322	
Injun Sand	Gr	H	1322	1403	
Slate	Gr	S	1403	1408	
Slate & Shells	Gr	S	1408	1901	
Brown Shale	Br	S	1901	1921	
Berea Sand	Wh	H	1921	1957	Gas 1922-1930 346 C.F.
Slate & Shells	Gr	H	1957	1967	
Shell	Lt	H	1967	1983	
Slate & Shell	Wh	S	1983	2044	
Slate	Dk	S	2044	2264	Gas 2161 346 C.F.
Slate & Shell	Gr	S	2264	2296	
Slate	Dk	S	2296	2465	
Brown Shale	Br	S	2465	2827	
Shale	Lt	S	2827	3052	
Brown Shale	Br	S	3052	3102	
Corniferous Lm.	Gr	H	3102	3107	
TOTAL DEPTH				3107	