

WW-7  
8-30-06



West Virginia Department of Environmental Protection  
Office of Oil and Gas  
**WELL LOCATION FORM: GPS**

API: 47-099-00391 WELL NO.: 805736  
 FARM NAME: Huntington Development & Gas Mineral  
 RESPONSIBLE PARTY NAME: Diversified Production LLC  
 COUNTY: Wayne DISTRICT: Stonewall  
 QUADRANGLE: Wilsondale  
 SURFACE OWNER: Bruce and Rachel Maynard  
 ROYALTY OWNER: Diversified Production LLC  
 UTM GPS NORTHING: 4,205,964.9  
 UTM GPS EASTING: 388,653.1 GPS ELEVATION: 1118'

The Responsible Party named above has chosen to submit GPS coordinates in lieu of preparing a new well location plat for a plugging permit or assigned API number on the above well. The Office of Oil and Gas will not accept GPS coordinates that do not meet the following requirements:

1. Datum: NAD 1983, Zone: 17 North, Coordinate Units: meters, Altitude: height above mean sea level (MSL) – meters.
2. Accuracy to Datum – 3.05 meters
3. Data Collection Method:

Survey grade GPS ; Post Processed Differential

Real-Time Differential

Mapping Grade GPS ; Post Processed Differential

Real-Time Differential

4. Letter size copy of the topography map showing the well location.

I the undersigned, hereby certify this data is correct to the best of my knowledge and belief and shows all the information required by law and the regulations issued and prescribed by the Office of Oil and Gas.

Signature  Director Production 8/26/21  
 Title Date

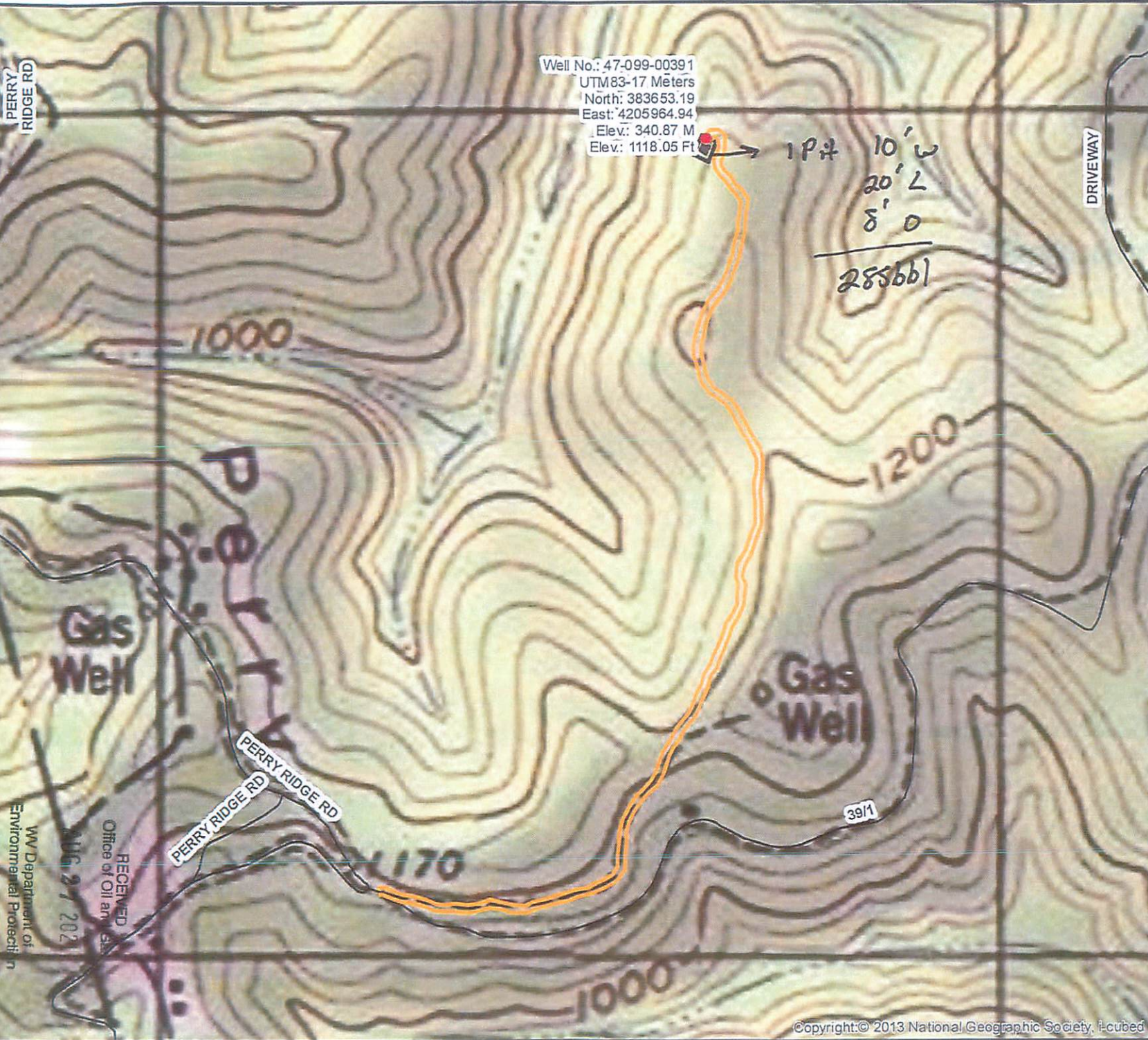
RECEIVED  
Office of Oil and Gas

AUG 27 2021

WV Department of  
Environmental Protection

10/01/2021





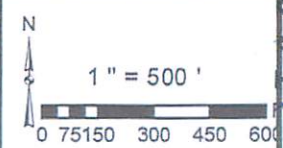
Diversified Gas & Oil Corporation  
 100 Diversified Way  
 Pikeville KY, 41051

47-099-00391

Plugging Map

Legend

- Well
- Access Road
- Pits
- Pad
- Public Roads



RECEIVED  
 Office of Oil and Gas  
 Environmental Protection  
 AUG 27 2012  
 WV Department of

4709900391