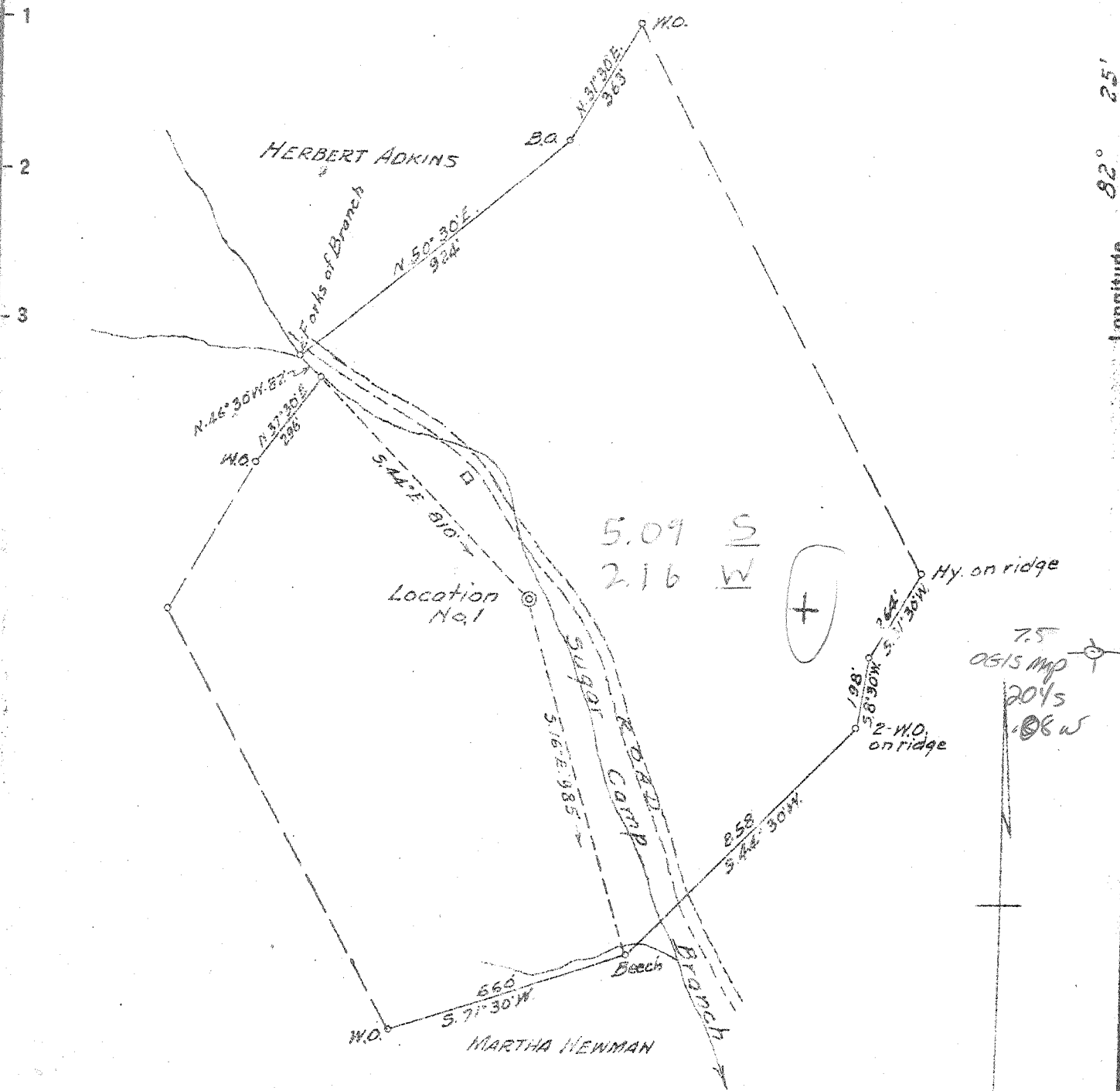


38° 22' 20"

Latitude 38° 25'

Longitude 82° 25'

82° 27' 30"



- New Location
- Drill Deeper
- Abandonment

Company HATFIELD GAS CO.
 Address HAMLIN, W. VA.
 Farm ELIZABETH CURNUTTE
 Tract _____ Acres 66 3/4 Lease No. _____
 Well (Farm) No. 1 Serial No. 5
 Elevation (Spirit Level) 640
 Quadrangle GUYANDOT NC
 County WAYNE District UNION
 Engineer A. G. Ewing
 Engineer's Registration No. 309
 File No. _____ Drawing No. _____
 Date 4-14-50 Scale 1" = 400'

STATE OF WEST VIRGINIA
 DEPARTMENT OF MINES
 OIL AND GAS DIVISION
 CHARLESTON

WELL LOCATION MAP
 FILE NO. WAY-719

+ Denotes location of well on United States Topographic Maps, scale 1 to 62,500, latitude and longitude lines being represented by border lines as shown.
 - Denotes one inch spaces on border line of original tracing.

6-6-230

Deep Well

WEST VIRGINIA DEPARTMENT OF MINES
OIL & GAS DIVISION
W E L L R E C O R D

Permit No. Way 719
Guyandotte Quad.

Gas Well
CASING & TUBING

Company	Hatfield Gas Company		
Address	Hamlin, W.Va.	10	25
Farm	Elizabeth Curnutte Acres 70	8 $\frac{1}{2}$	208
Location	Sugar Camp Branch	6 5/8	2065
Well No.	1 (Sr 5) Elev. 640	2	2738
District	Union Wayne County		
Surface		Depth	2150
Mineral	Elizabeth Curnutte, Huntington, W.Va.		
Commenced	May 5, 1950		
Completed	July 12, 1950		
Date shot	July 11 Depth 2695 to 2930 with 2500# detonite		
Open flow	6/10ths W in 2"		
Volume	370,000 C.F.		
Rock Pressure			
Fresh Water	230'		
Salt Water	1030'		

Sand & Gravel	0	13
Blue Mud	13	25
Sand	25	40
Slate	40	190
Sand	190	206
Slate	206	330
Sand	330	450
Slate	450	653
Sand	653	695
Slate	695	995
Salt Sand	995	1042
Slate & Shells	1042	1130
Sand	1130	1140
Slate	1140	1180
Maxon Sand	1180	1219
Little Lime	1219	1233
Pencil Cave	1233	1236
Big Lime	1236	1386
Keener Sand	1386	1405
Injun Sand	1405	1437
Slate & Shells	1437	1500
Shell	1500	1534
Slate & Shells	1534	1996
Brown Shale	1996	2032
Berea Grit	2032	2050
Slate	2050	2052
Hard Shell	2052	2075
Slate	2075	2085
Light Brown Shell	2085	2100
Brown Shale	2100	2120
Brown Shell	2120	2150
Brown Shale	2150	2200
Slate	2200	2394
Light Brown Shale	2394	2450
Slate	2450	2465
Brown Shale	2465	2535
Slate	2535	2585
Brown Shale	2585	2675
White Slate	2675	2705
Brown Shale	2705	2925
White Slate	2925	3110
Brown Shale	3110	3160
Corniferous Lime	3160	3250
Black Lime	3250	3324
T.D.		3324

3160
640

2520