

New Location
 Drill Deeper
 Abandonment

Company C. Abot Oil & Gas of W. Va.
 Address P.O. Box 628 Charleston W. Va. 25322
 Farm Nile Bartram
 Tract _____ Acres 87 Lease No. 2030
 Well (Farm) No. 1 Serial No. 801
 Elevation (Spirit Level) 974 L
 Quadrangle ~~Navigata~~ ^{15' NE} 252.30" W 1.93"
 County Wayne District Lincoln
 Engineer T. S. Flournoy
 Engineer's Registration No. 269
 File No. _____ Drawing No. _____
 Date June 27, 1950 Scale 1" = 500'

STATE OF WEST VIRGINIA
 DEPARTMENT OF MINES
 OIL AND GAS DIVISION
 CHARLESTON

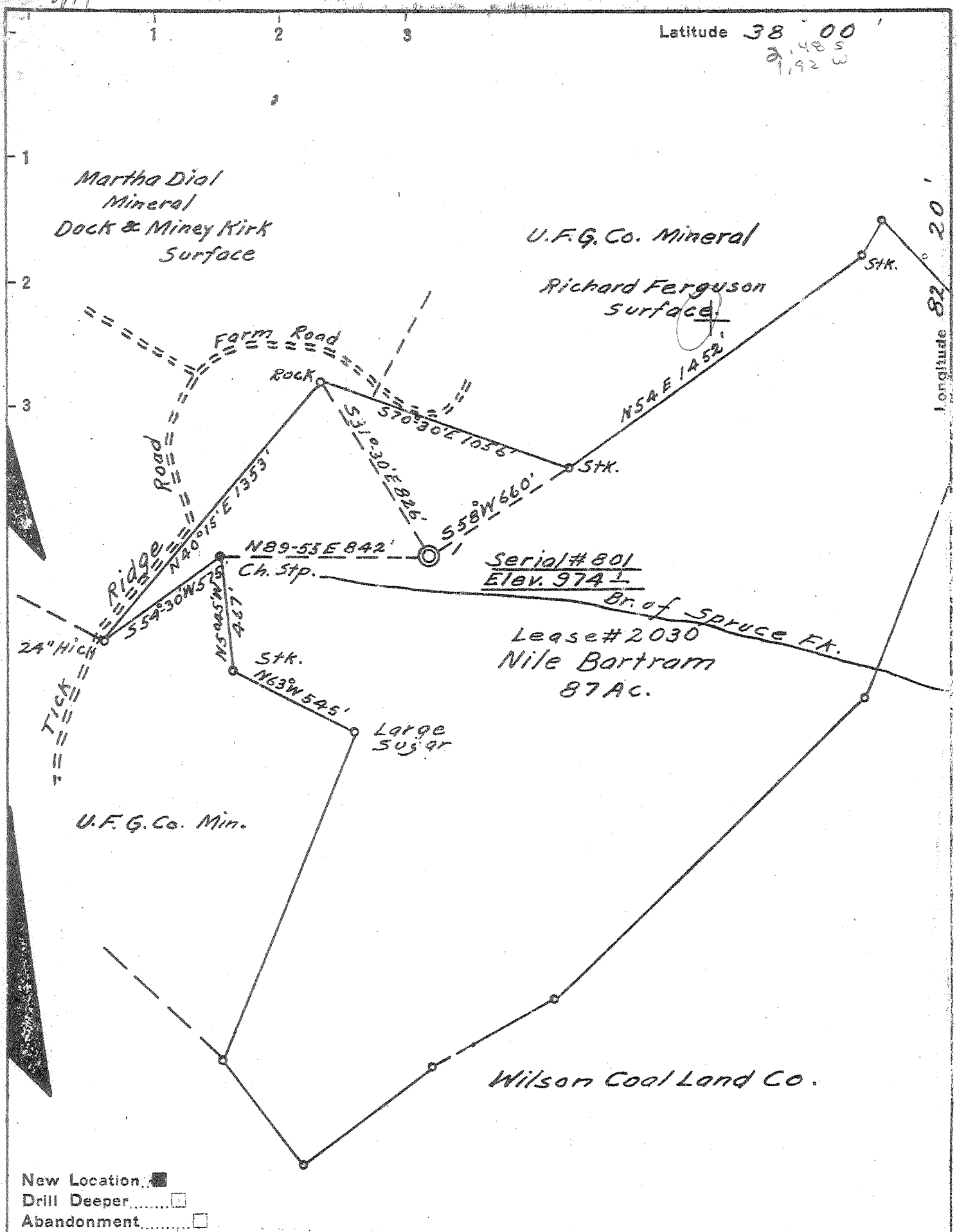
WELL LOCATION MAP
 FILE NO. WAY-723 - Rec.

+ Denotes location of well on United States Topographic Maps, scale 1 to 62,500, latitude and longitude lines being represented by border lines as shown.

- Denotes one inch spaces on border line of original tracing.

JUL 18 1983

47-099



New Location
 Drill Deeper
 Abandonment

Company Owens, Libbey-Owens Gas Dept.
 Address Box 4158 Charleston 4 W. Va.
 Farm Nile Bartram
 Tract _____ Acres 87 Lease No. 2030
 Well (Farm) No. 1 Serial No. 801
 Elevation (Spirit Level) 974
 Quadrangle Naugatuck 252.30"W 1.93"
 County Wayne District Lincoln
 Engineer T.S. Flournoy
 Engineer's Registration No. 269
 File No. _____ Drawing No. _____
 Date June 27, 1950 Scale 1"=500'

STATE OF WEST VIRGINIA
 DEPARTMENT OF MINES
 OIL AND GAS DIVISION
 CHARLESTON

WELL LOCATION MAP
 FILE NO. WAY-723

+ Denotes location of well on United States Topographic Maps, scale 1 to 62,500, latitude and longitude lines being represented by border lines as shown.

- Denotes one inch spaces on border line of original tracing.

6-27-50 Deep Well

WEST VIRGINIA DEPARTMENT OF MINES
OIL & GAS DIVISION
W E L L R E C O R D

Permit No. Way-723

GAS WELL

Naugatuck Quad.

Company Owens, Libbey-Owens Gas Department
Address P.O. Box 4158, Charleston 4, W. Va.
Farm Nile Bartram 87 Acres
Well No. 1 Serial No. 801 Elev. 974.1
District Lincoln County Wayne
Mineral Nile Bartram & Chesley A. Lycan
Commenced 8/15/50
Completed 11/14/50
Date Shot 11/16/50 from 2375 to 3525
Volume Big Lime 21 M) Total 71 M
Br. Shale 50M)
Rock Pressure 300 lbs. 46 hrs.

CASING & TUBING

8-1/4	475'	475'
6-5/8	1617'	1617'
3		2309'

Screw casing anchor
7"x8-5/8" 1512-1515
Oil well Hook Wall
3-1/2x6-1/8"x16"
(3'9")
Depth Set 2302-2306

S _a nd	Yellow	Soft	0	23	
Slate	Dark	Soft	23	35	
Sand	Dark	Hard	35	45	
Sand	Light	Med.	45	60	
Slate	Dark	Soft	60	65	
Sand	Dark	Soft	65	85	
Slate	Dark	Soft	85	97	
Sand	Gray	Hard	97	139	Water 117 1 Blr./hr.
Slate	Dark	Soft	139	146	
Sand	Light	Hard	146	198	
Slate	Dark	Soft	198	210	
Sand	Grey	Med.	210	389	Water test 358 1 1/2 Blr./hr.
Coal	Black	Soft	389	393	
Slate	Dark	Soft	393	528	Water test before running casing
S _a nd	Light	Med.	528	546	1 1/2 blr./hr.
Slate	Light	Soft	546	582	Ran 8-5/8" casing on midget packer
Slate	Dark	Soft	582	607	at 475
S _a nd	Light	Med.	607	637	
Slate	Dark	Soft	637	648	
Slate & Shells	Light	Soft	648	748	
Sand	Light	Med.	748	773	
Slate	Dark	Soft	773	931	
S _a nd	Light	Med.	931	983	
Slate	Dark	Soft	983	1014	
Sand	Light	Med.	1014	1054	
Slate	Dark	Soft	1054	1061	
S _a nd	Light	Hard	1061	1094	Water 1065 Hole filling up.
Slate	Dark	Soft	1094	1103	Water 1120 " " "
S _a nd	White	Hard	1103	1193	Water 1188 Hole full.
Lime	Black	Med.	1193	1219	
Sand	Grey	Hard	1219	1244	
Slate	Dark	Soft	1244	1258	
Slate & Shells	Dark	Med.	1258	1317	
Lime Shell	Light	Hard	1317	1326	Water 1326 Stood 400' in hole
Slate & Shells	Dark	Med.	1326	1338	
Sand	Light	Hard	1338	1356	
Red Rock	Red	Soft	1356	1360	
Slate & Shells	Dark	Med.	1360	1386	Oil 1412 Show
Sand	Light	Hard	1386	1427	Water 1436 stood 400'
Shell	Light	Hard	1427	1436	
Sand	Light	Hard	1436	1476	Hole caving 1447-1481
Lime	Dark	Hard	1476	1493	Water 1510 400' in hole
Big Lime	White	Hard	1493	1588	

Ran 7" csg. on midget pkr. @ 1522
Gas & oil 1583 oil 1 1/2 blr./hr.
Gas 44/10 W 5/8" 20.3 M
Oil did not exhaust on next 7 tours
Gas test 1588 20/10 W 3/8" 4.9 M
Pulled 7" casing.
Reamed hole 1522 to 1588.
Resumed drilling in 8" hole.
Ran 7" csg. @ 1594 on shoe & anchor
pkr. set 81' off bottom.
Gas tested 46/10 W 3/8" 3.3 M.
Packer did not hold
Pulled 7" casing
Ran 7" casing @ 1594 on BH pkr. with
anchor pkr. set 84' off bottom.

Big Lime Light Hard 1588 1594

Big Lime	White	Hard	1594	1596	Oil 1596	20 gal. in 4 hrs.
Big Lime	White	Hard	1596	1610		
					Pulled 7" casing - will ream hole Reamed hole to 1610.	
Big Lime	White	Hard	1610	1612		Reran 7" casing @ 1612 on bottom hole packer with anchor packer set 101' above.
					Bailed out water.	
Big Lime	White	Hard	1612	1615		At 1615, found that packers did not seal off oil.
Big Lime	White	Hard	1615	1617		Pulled casing & reamed hole 1612-17. Ran 7" casing at 1617 after dumping 8 sacks of cement in hole.
					7" x 8-5/8" screw casing anchor packer set at 1512 to 1515.	
Big Lime	White	Hard	1617	1623		After drilling to 1623, well was tested for water - casing still leaking. Cemented in 7" casing with 20 sacks cement.
Big Lime	White	Hard	1623	1649		Estimated 150° of cement behind 7" (1617-1467).
					Estimated Aqua Cel 1467-1325.	
					Gas	1624 14/10 W 2" 117 M
					Test	1628 100/10 W 1" 78 M
					Test	1630 78/10 W 1" 69 M
					Test	1649 69/10 W 1" 65 M
					Oil also found just below casing - probably with gas - about 1 gal./hr.	
Big Lime	White	Hard	1649	1693	Oil	1691 Show 1 gal./hr.
McGrady	Red	Med.	1693	1715	Test	1679 44/10 W. 1" 52 M
Big Injun	Gray	Med.	1715	1740		
Slate	Dark	Soft	1740	1758	test	1747 30/10 W 1" 43 M
Lime Shell	Dark	Hard	1758	1767		
Slate	Dark	Soft	1767	1789		
Lime Shell	Light	Hard	1789	1797		
Slate	Dark	Soft	1797	1829		
Slate & Shell	Light	Med.	1829	1886	Test	1886 22/10 W 1" 36.7 M
Slate & Shell	Dark	Med.	1886	1943		
Slate	Light	Soft	1943	2020		
Slate & Shells	Light	Soft	2020	2108		
Slate & Shells	Dark	Soft	2108	2156		
Slate & Shells	Light	Soft	2156	2218		
Shale	Dark	Soft	2218	2228	Test	2228 18/10 W 1" 33.2 M
Slate & Shells	Dark	Med.	2228	2246		
Shell	Dark	Hard	2246	2251	Test	2251 14/10 W 1" 29 M
Berea Sand	Light	Hard	2251	2319		
Broken Sand	Light	Med.	2319	2335	Test	2317 14/10 W 1" 29 M
Slate	Dark	Soft	2335	2347		
Shale	Brown	Soft	2347	2405		
Slate	Dark	Soft	2405	2420		
Shell	Light	Med.	2420	2425		
Slate	Dark	Soft	2425	2445		
Slate	Light	Soft	2445	2564	Test	2514 13/10 W 1" 28 M
Shell	Dark	Med.	2564	2568	Test	2554 10/10 W 1" 24.7 M.
Slate	Light	Soft	2568	2733	Test	2733 8/10 W 1" 22 M
Slate	Dark	Soft	2733	2753		
Slate	Light	Soft	2753	2799		
Slate	Dark	Soft	2799	2830	Test	2830 7/10 W 1" 20.7 M.
Slate	Light	Soft	2830	2917		1/2 bbl. oil in hole when starting up on Monday(24 hrs.)
Slate	Dark	Soft	2917	2936		
Slate	Light	Soft	2936	2953	Test	2908 7/10 W 1" 20.7 M
Brown Shale	Brown	Soft	2953	3098	Gas (?)	2988 9/10 W 1" 23.5 M
Shell & Slate	Light	Med.	3098	3110		
Brown Shale	Brown	Soft	3110	3206	Test	3177 8/10 W 1" 22.1 M
Slate	Light	Soft	3206	3452	Gas (?)	3191 10/10 W 1" 24.7 M
Brown Shale	Brown	Soft	3452	3524		Hole caving 3216 to 3238
Garniferous Lm	Dark	Hard	3524	3526		
Total Depth					Test	3349 8/10 W 1" 22 M
					Test	3526 same
					Test before shot 7/10 W 1" 21 M	
					Test after shot:	
					1 hr.	10/10 M 2" 366 M
					18 hrs.	7/10 W 2" 83 M

Test before tubing 20/10 W 1½" 79 M
" after " :
Br. Shale 40/10 W 1" 50 M
Big Lime 7/10 W 1" 21 M

Set tubing @ 2306 on HW packer
Tubing is 2'10" above derrick floor.
Derrick floor is 2' above ground.

SEP 06 1983



IV-35 (Rev 8-81)

RECEIVED

AUG 24 1983

State of West Virginia Department of Mines Oil and Gas Division

Date August 23, 1983 Operator's Well No. #1 Farm Nile Bartram API No. 47 - 099 - 723 REC

OIL & GAS DIVISION DEPT. OF MINES

WELL OPERATOR'S REPORT OF

DRILLING, FRACTURING AND/OR STIMULATING, OR PHYSICAL CHANGE

WELL TYPE: Oil x / Gas / Liquid Injection / Waste Disposal / (If "Gas," Production / Underground Storage / Deep / Shallow /)

LOCATION: Elevation: 974' G.L. Watershed West Fork of 12 Pole Creek District: Lincoln County Wayne Quadrangle Naugatuck

COMPANY Cabot Oil & Gas Corporation of WV ADDRESS P.O. Box 628, Charleston, WV 25322 DESIGNATED AGENT Robert E. Horrell ADDRESS P.O. Box 628, Charleston, WV 25322 SURFACE OWNER "See attached sheet" ADDRESS MINERAL RIGHTS OWNER "See attached sheet" ADDRESS OIL AND GAS INSPECTOR FOR THIS WORK Kenneth Butcher ADDRESS RFD #1 Barboursville, WV 25504 PERMIT ISSUED July 14, 1983 DRILLING COMMENCED 7/26/83 DRILLING COMPLETED 8/23/83 IF APPLICABLE: PLUGGING OF DRY HOLE ON CONTINUOUS PROGRESSION FROM DRILLING OR REWORKING. VERBAL PERMISSION OBTAINED ON

Table with 4 columns: Casing & Tubing Size, Used in Drilling, Left in Well, Cement fill up Cu. ft. Rows include sizes 20-16 Cond., 13-10", 9 5/8, 8 5/8, 7, 5 1/2, 4 1/2, 3, 2-3/8" and Liners used.

GEOLOGICAL TARGET FORMATION Big Lime/Injun Depth 1540-1688 1693-1720 feet Depth of completed well 2436 feet Rotary / Cable Tools x Water strata depth: Fresh 117 feet; Salt 1065, 1188 feet Coal seam depths: 389' [60"] Is coal being mined in the area? No

OPEN FLOW DATA

Producing formation Injun Pay zone depth 1694-1716 feet Gas: Initial open flow 0 Mcf/d Oil: Initial open flow Bbl/d Final open flow 150 Mcf/d Oil: Final open flow Bbl/d Time of open flow between initial and final tests 4 hours Static rock pressure 460 psig (surface measurement) after 24 hours shut in (If applicable due to multiple completion--)

POF 350 MCF +20 BOPD

Second producing formation Big Lime Pay zone depth 1552-1564 feet Gas: Initial open flow 29 Mcf/d Oil: Initial open flow 9 Bbl/d Final open flow 200 Mcf/d Oil: Final open flow 20 Bbl/d Time of open flow between initial and final tests 4 hours Static rock pressure 460 psig (surface measurement) after 24 hours shut in

(Continue on reverse side)

DETAILS OF PERFORATED INTERVALS, FRACTURING OR STIMULATING, PHYSICAL CHANGE, ETC.
 7/27/83 - Plugged back from shale. Set cal-seal plug on bridge @2436'
 8/11/83 - Perforated Injun 1694-1698', 4 holes, 1710-1716', 6 holes.
 8/13/83 - R/U HOWCO. Pumped 500 gals. MCA, 15% acid. Brokedown Injun at 1400#.
 Treated at 16.8 bbls. per minute. ATP 1732#. Total fluid 370 bbls. S/L fluid 300
 bbls, 300 SCF N₂/bbl. Total nitrogen 100,000 standard cubic feet, 30,000# 20/40
 sand. Max. concentration 3#/gal. ISIP 1260#, 15 minutes 900#. Set wire line bridge
 plug. Perforated Big Lime from 1552-1624', 19 holes.
 8/14/83 - T/U HOWCO. Pumped 500 gals. 15% HCL. Brokedown Big Lime at 500#.
 Treated at 18.5 bbls. per minute. ATP 2108#, 30,000# 20/40 sand, max.
 concentration 3# per gal. Total fluid 370 bbls., including 3000 gals. 28% HCL
 in treatment. S/L fluid 300 bbls. ISIP 1400#, 15 minutes 900#.

WELL LOG

FORMATION	COLOR	HARD OR SOFT	TOP FEET	BOTTOM FEET	REMARKS Including indication of all fresh and salt water, coal, oil and gas
Sand	Yellow	Soft	0	50	
Sandy Shale	Dark	Hard	50	90	
Sand	Light	Hard	90	140	Fresh H ₂ O @ 117' 1 bbl./hr.
Shaley Sand	Dark	Medium	140	200	
Shale	Dark	Medium	200	210	
Sand	Grey	Hard	210	389	H ₂ O test, 1½ bbl./hr. @ 358'
Coal	Black	Soft	389	393	
Shaley Sand	Dark	Soft	393	515	Set 8-5/8" casing on pkr. @ 475'
Sand	Light	Medium	515	560	
Shale	Dark	Medium	560	570	
Sand	Light	Medium	570	580	
Shale	Dark	Soft	580	605	
Sand	Light	Medium	605	645	
Sandy Shale	Dark	Medium	645	740	
Sand	Light	Medium	740	770	
Shale	Dark	Soft	770	910	
Sand	Light	Medium	910	995	
Sandy Shale	Dark	Medium	995	1055	
Sand	Light	Hard	1055	1075	Salt H ₂ O @ 1065' --Hole filled up
Shale	Dark	Soft	1075	1110	
Sand	White	Hard	1110	1193	Salt H ₂ O @ 1120 and 1188'
Lime	Black	Hard	1193	1215	
Shale (limey)	Dark	Soft	1215	1320	
Sand	Light	Hard	1320	1360	
Shale	Red	Soft	1360	1372	
Sand	Light	Hard	1372	1415	
Shale	Grey	Medium	1415	1425	
Maxton Sand	White	Hard	1425	1490	
Little Lime	Grey	Hard	1490	1540	
Big Lime	White	Hard	1540	1688	Oil & Gas @1583, oil 1½ bbls/hr. Gas 20 Mcf/d, s/oil @ 1596, set 7" @ 1617, gas @ 1624 - 117 Mcf, test @ 1649 - 65 Mcf, s/oil @ 1691 1 gal/
Shale	Red	Soft	1688	1693	
Injun	Grey	Medium	1693	1720	
Shale	Dark	Soft	1720	2220	Test @ 1886 - 37 Mcf
Sunbury Shale	Black	Soft	2220	2245	Test @ 2228 - 33 Mcf
Berea (Shaley)	Grey	Medium	2245	2336	Test @ 2317 - 29 Mcf
Shale	Brown	Soft	2336	2436	(Attach separate sheets as necessary)

CABOT OIL & GAS CORPORATION OF WEST VIRGINIA
Well Operator

By: Robert E. Hensell

Date: August 23, 1983

Note: Regulation 2.02(i) provides as follows:
 "The term 'log' or 'well log' shall mean a systematic
 detailed geological record of all formations, including
 those encountered in the drilling of a well."

RECEIVED



SEP 16 1983

IV-35 (Rev 8-81)

Date August 23, 1983
Operator's Well No. #1
Farm Nile Bartram
API No. 47 - 099 - 723 REC

OIL & GAS DIVISION State of West Virginia
DEPT. OF MINES Department of Mines
Oil and Gas Division

WELL OPERATOR'S REPORT OF DRILLING, FRACTURING AND/OR STIMULATING, OR PHYSICAL CHANGE

WELL TYPE: Oil x / Gas / Liquid Injection / Waste Disposal / (If "Gas," Production / Underground Storage / Deep / Shallow /)

LOCATION: Elevation: 974' G.L. Watershed West Fork of 12' Pole Creek
District: Lincoln County Wayne Quadrangle Naugatuck

COMPANY Cabot Oil & Gas Corporation of WV
ADDRESS P.O. Box 628, Charleston, WV 25322
DESIGNATED AGENT Robert E. Horrell
ADDRESS P.O. Box 628, Charleston, WV 25322
SURFACE OWNER "See attached sheet"
ADDRESS
MINERAL RIGHTS OWNER "See attached sheet"
ADDRESS
OIL AND GAS INSPECTOR FOR THIS WORK Kenneth Butcher
ADDRESS RFD #1 Barboursville, WV 25504
PERMIT ISSUED July 14, 1983
DRILLING COMMENCED 7/26/83
DRILLING COMPLETED 8/23/83
IF APPLICABLE: PLUGGING OF DRY HOLE ON CONTINUOUS PROGRESSION FROM DRILLING OR REWORKING. VERBAL PERMISSION OBTAINED ON

Table with 4 columns: Casing & Tubing, Used in Drilling, Left in Well, Cement fill up Cu. ft. Rows include sizes like 20-16 Cond., 13-10", 9 5/8, 8 5/8, 7, 5 1/2, 4 1/2, 3, 2-3/8" and Liners used.

GEOLOGICAL TARGET FORMATION Big Lime/Injun Depth 1540-1688 1693-1720 feet
Depth of completed well 2436 feet Rotary / Cable Tools x
Water strata depth: Fresh 117 feet; Salt 1065, 1120 feet
Coal seam depths: 389' [60"] Is coal being mined in the area? No

OPEN FLOW DATA
Producing formation Big Lime/Injun Pay zone depth 1552-1624 1694-1716 feet
Gas: Initial open flow 0 Mcf/d Oil: Initial open flow 9 Bbl/d
6 day In-line Final test 65 Mcf/d @ 40 psig Final open flow 20 Bbl/d
Time of open flow between initial and final tests hours
Static rock pressure 460 psig (surface measurement) after 24 hours shut in
(If applicable due to multiple completion--)

DETAILS OF PERFORATED INTERVALS, FRACTURING OR STIMULATING, PHYSICAL CHANGE, ETC.
 7/27/83 - Plugged back from shale. Set cal-seal plug on bridge @2436'
 8/11/83 - Perforated Injun 1694-1698', 4 holes, 1710-1716', 6 holes.
 8/13/83 - R/U HOWCO. Pumped 500 gals. MCA, 15% acid. Brokedown Injun at 1400#.
 Treated at 16.8 bbls. per minute. ATP 1732#. Total fluid 370 bbls. S/L fluid 300
 bbls, 300 SCF N₂/bbl. Total nitrogen 100,000 standard cubic feet, 30,000# 20/40
 sand. Max. concentration 3#/gal. ISIP 1260#, 15 minutes 900#. Set wire line bridge
 plug. Perforated Big Lime from 1552-1624', 19 holes.
 8/14/83 - T/U HOWCO. Pumped 500 gals. 15% HCL. Brokedown Big Lime at 500#.
 Treated at 18.5 bbls. per minute. ATP 2108#, 30,000# 20/40 sand, max.
 concentration 3# per gal. Total fluid 370 bbls., including 3000 gals. 28% HCL
 in treatment. S/L fluid 300 bbls. ISIP 1400#, 15 minutes 900#.

WELL LOG

FORMATION	COLOR	HARD OR SOFT	TOP FEET	BOTTOM FEET	REMARKS Including indication of all fresh and salt water, coal, oil and gas
Sand	Yellow	Soft	0	50	
Sandy Shale	Dark	Hard	50	90	
Sand	Light	Hard	90	140	Fresh H ₂ O @ 117' 1 bbl./hr.
Shaley Sand	Dark	Medium	140	200	
Shale	Dark	Medium	200	210	
Sand	Grey	Hard	210	389	H ₂ O test, 1 1/2 bbl./hr. @ 358'
Coal	Black	Soft	389	393	
Shaley Sand	Dark	Soft	393	515	Set 8-5/8" casing on pkr. @ 475'
Sand	Light	Medium	515	560	
Shale	Dark	Medium	560	570	
Sand	Light	Medium	570	580	
Shale	Dark	Soft	580	605	
Sand	Light	Medium	605	645	
Sandy Shale	Dark	Medium	645	740	
Sand	Light	Medium	740	770	
Shale	Dark	Soft	770	910	
Sand	Light	Medium	910	995	
Sandy Shale	Dark	Medium	995	1055	
Sand	Light	Hard	1055	1075	Salt H ₂ O @ 1065' -- Hole filled up
Shale	Dark	Soft	1075	1110	
Sand	White	Hard	1110	1193	Salt H ₂ O @ 1120 and 1188'
Lime	Black	Hard	1193	1215	
Shale (limey)	Dark	Soft	1215	1320	
Sand	Light	Hard	1320	1360	
Shale	Red	Soft	1360	1372	
Sand	Light	Hard	1372	1415	
Shale	Grey	Medium	1415	1425	
Maxton Sand	White	Hard	1425	1490	
Little Lime	Grey	Hard	1490	1540	
Big Lime	White	Hard	-1540	1688	Oil & Gas @1583, oil 1 1/2 bbls/hr. Gas 20 Mcf/d, s/oil @ 1596, set 7" @ 1617, gas @ 1624 - 117 Mcf, test @ 1649 - 65 Mcf, s/oil @ 1691 1 gal/
Shale	Red	Soft	1688	1693	
Injun	Grey	Medium	1693	1720	
Shale	Dark	Soft	1720	2220	Test @ 1886 - 37 Mcf
Sunbury Shale	Black	Soft	2220	2245	Test @ 2228 - 33 Mcf
Berea (Shaley)	Grey	Medium	2245	2336	Test @ 2317 - 29 Mcf
Shale	Brown	Soft	2336	2436	

(Attach separate sheets as necessary)

CABOT OIL & GAS CORPORATION OF WEST VIRGINIA
Well Operator

By: Robert E. Howell

Date: September 14, 1983

Note: Regulation 2.02(i) provides as follows:
 "The term 'log' or 'well log' shall mean a systematic
 detailed geological record of all formations, including
 soil, encountered in the drilling of a well."

RECEIVED

FORM IV

[08-78]

OCT 26 1983

Date: October 20, 1983

Operator's Well No. Nile Bartram #1

API Well No. 47 - 099 - 723 REC
State County Permit

OIL & GAS DIVISION STATE OF WEST VIRGINIA
DEPARTMENT OF MINES, OIL AND GAS DIVISION
DEPT. OF MINES

AFFIDAVIT OF PLUGGING AND FILLING WELL

WELL TYPE: Oil X / Gas ___ / Liquid Injection ___ / Waste Disposal ___ /
(If "Gas", Production ___ / Underground storage ___ / Deep ___ / Shallow ___ /)
LOCATION: Elevation: 974' G.L. Watershed: West Fork of 12 Pole Creek
District: Lincoln County: Wayne Quadrangle: Naugatuck

WELL OPERATOR Cabot Oil & Gas Corporation of WV DESIGNATED AGENT Robert E. Horrell
Address P.O. Box 628 Address P.O. Box 628
Charleston, West Virginia 25322 Charleston, West Virginia 25322

STATE OF WEST VIRGINIA,)
COUNTY OF KANAWHA) SS:

Gene McClure and Mark McCormick

being first duly sworn according to law, depose and say that they are experienced in the work of plugging and filling oil and gas wells; that they were employed by Cabot Oil & Gas Corp. of WV, the well operator, and participated in the work of plugging and filling the above well; that the work was commenced on July 26, 1983, and completed on August 23, 1983, in the following manner:

PERMITTED WORK: Plug and abandon ___ / Clean out and replug ___ /

*NOTE: THIS WELL WAS PLUGGED BACK FROM THE SHALE AND RECOMPLETED IN THE BIG LIME & INJUN.

PLUGGING MATERIALS

Type of Cement	Other Materials	Depth	Thickness
	Clay and	2436'	24'
	Calseal		

COAL SEAMS (NAMES AND DEPTHS)

DESCRIPTION OF WELL MONUMENT

Bridge Plugs Used--Type and Depth

VENT PIPE

MISCELLANEOUS MATERIALS

CASING LOST

TYPE OF RIG:

Owner: Well Op'r ___ / Contractor X /

Rig time: ___ days plus ___ hours

Gene McClure (SEAL)
Mark A. McCormick (SEAL)

Subscribed and sworn to before me this

24th day of October, 1983.

My commission expires March 5, 1989.

Loene Miller
Notary Public

WVME 723 REC.



1) Date: June 16, 19 82
 2) Operator's Well No. Nile Bartram #1
 3) API Well No. 47 099 723-REC.
 State County Permit

DRILLING CONTRACTOR:
UNKNOWN

STATE OF WEST VIRGINIA
DEPARTMENT OF MINES, OIL AND GAS DIVISION

OIL AND GAS WELL PERMIT APPLICATION

- 4) WELL TYPE: A Oil XX / Gas _____ /
 B (If "Gas", Production _____ / Underground storage _____ / Deep _____ / Shallow _____ /)
- 5) LOCATION: Elevation: 974' Watershed: Spruce Fork
 District: Lincoln County: Wayne Quadrangle: Naugatuck
- 6) WELL OPERATOR Cabot Oil & Gas Corp. of W.Va. 11) DESIGNATED AGENT Robert E. Horrell
 Address P.O. Box 628 Address P.O. Box 628
Charleston, WV 25322 Charleston, WV 25322
- 7) OIL & GAS ROYALTY OWNER Libby-Owens Ford Co. 12) COAL OPERATOR NOT OPERATED
 Address 811 Madison Ave., Toledo, OH 43624 Address _____
Owens-Illinois, Inc. P.O. Box 1035, Toledo, OH 43601
- 8) SURFACE OWNER Mrs. June Bartram 13) COAL OWNER(S) WITH DECLARATION ON RECORD:
 Address Rt. 4, 5404 Carmel Rd., Hillsboro, OH 45133 Name St. of W.Va. Public Land Corp.
Mr. Chesley A. Lycan Address Attn: Jim Jones, Bldg 3, Rm 713
821 Rogers Court, Ashland, KY 45133 1800 Washington St E, Chas., WV 25305
- 9) FIELD SALE (IF MADE) TO:
 Address _____
- 10) OIL & GAS INSPECTOR TO BE NOTIFIED
 Name Kenneth B. Suter
 Address RFD #1
Barboursville, WV 25504
- 14) COAL LESSEE WITH DECLARATION ON RECORD:
 Name _____
 Address _____

- 15) PROPOSED WORK: Drill _____ / Drill deeper _____ / Redrill _____ / Fracture or stimulate _____ /
 Plug off old formation XX / Perforate new formation _____ /
 Other physical change in well (specify) Abandon Brown Shale - Plug back to Big Lime
- 16) GEOLOGICAL TARGET FORMATION, Big Lime
 17) Estimated depth of completed well, _____ feet
 18) Approximate water strata depths: Fresh, 117, 358 feet; salt, _____ feet.
 19) Approximate coal seam depths: _____ Is coal being mined in the area? Yes _____ / No _____

20) CASING AND TUBING PROGRAM WORKOVER

CASING OR TUBING TYPE	SPECIFICATIONS					FOOTAGE INTERVALS		CEMENT FILL-UP OR SACKS (Cubic feet)	PACKERS	
	Size	Grade	Weight per ft.	New	Used	For drilling	Left in well			
Conductor										Kinds
Fresh water	<u>8-5/8</u>					<u>PRESENT</u>	<u>475'</u>	<u>on packer</u>		
Coal						<u>PRESENT</u>	<u>1617'</u>	<u>on packer</u>		Sizes
Intermediate										
Production										Depths set
Tubing						<u>PULL</u>	<u>2309'</u>	<u>hogwall 2304'</u>		
Liners	<u>2-3/8</u>					<u>PROPOSED</u>	<u>1700'</u>			Perforations: Top Bottom

- 21) EXTRACTION RIGHTS
 Check and provide one of the following:
 Included is the lease or leases or other continuing contract or contracts by which I hold the right to extract oil or gas.
 The requirement of Code 22-4-1-(c) (1) through (4). (See reverse side for specifics.)
- 22) ROYALTY PROVISIONS
 Is the right to extract, produce or market the oil or gas based upon a lease or other continuing contract or contracts providing for flat well royalty or any similar provision for compensation to the owner of the oil or gas in place which is not inherently related to the volume of oil or gas so extracted, produced or marketed? Yes No
- If the answer above is No, nothing additional is needed. If the answer is Yes, you may use Affidavit Form IV-60.
- 23) Required Copies (See reverse side.)
- 24) Copies of this Permit Application and the enclosed plat and reclamation plan have been mailed by registered mail or delivered by hand to the above named coal operator, coal owner(s), and coal lessee on or before the day of the mailing or delivery of this Permit Application to the Department of Mines at Charleston, West Virginia.

Notary: _____ Signed: Robert E. Horrell
 My Commission Expires _____ Its: District Production Superintendent

OFFICE USE ONLY
DRILLING PERMIT

Permit number 47-099-0723-REC. Date July 14 19 82

This permit covering the well operator and well location shown below is evidence of permission granted to drill in accordance with the pertinent legal requirements subject to the conditions contained herein and on the reverse hereof. **Notification must be given to the District Oil and Gas Inspector. (Refer to No. 10) Prior to the construction of roads, locations and pits for any permitted work.** In addition, the well operator or his contractor shall notify the proper district oil and gas inspector 24 hours before actual permitted work has commenced.)

Permit expires XXXX July 14, 1985 unless drilling is commenced prior to that date and prosecuted with due diligence.

Bond:	Agent:	Plat:	Casing	Fee
-------	--------	-------	--------	-----

Administrator, Office of Oil and Gas