

New Location
 Drill Deeper
 Abandonment *issued 2/12/75*
 PIP PETROLEUM CORPORATION

Company CHARTERS OIL CO.
 Address PITTSBURGH, PA. *3rd Dist*
 Farm TONY MCCOY
 Tract _____ Acres 53 Lease No. 3328
 Well (Farm) No. 1 Serial No. _____
 Elevation (Spirit Level) 733.72
 Quadrangle LOUISA NE
 County WAYNE District BUTLER
 Engineer W.E. Wood
 Engineer's Registration No. 270
 File No. No. 54203.R Drawing No. _____
 Date AUG. 6, 1955 Scale 1" = 400'

STATE OF WEST VIRGINIA
 DEPARTMENT OF MINES
 OIL AND GAS DIVISION
 CHARLESTON

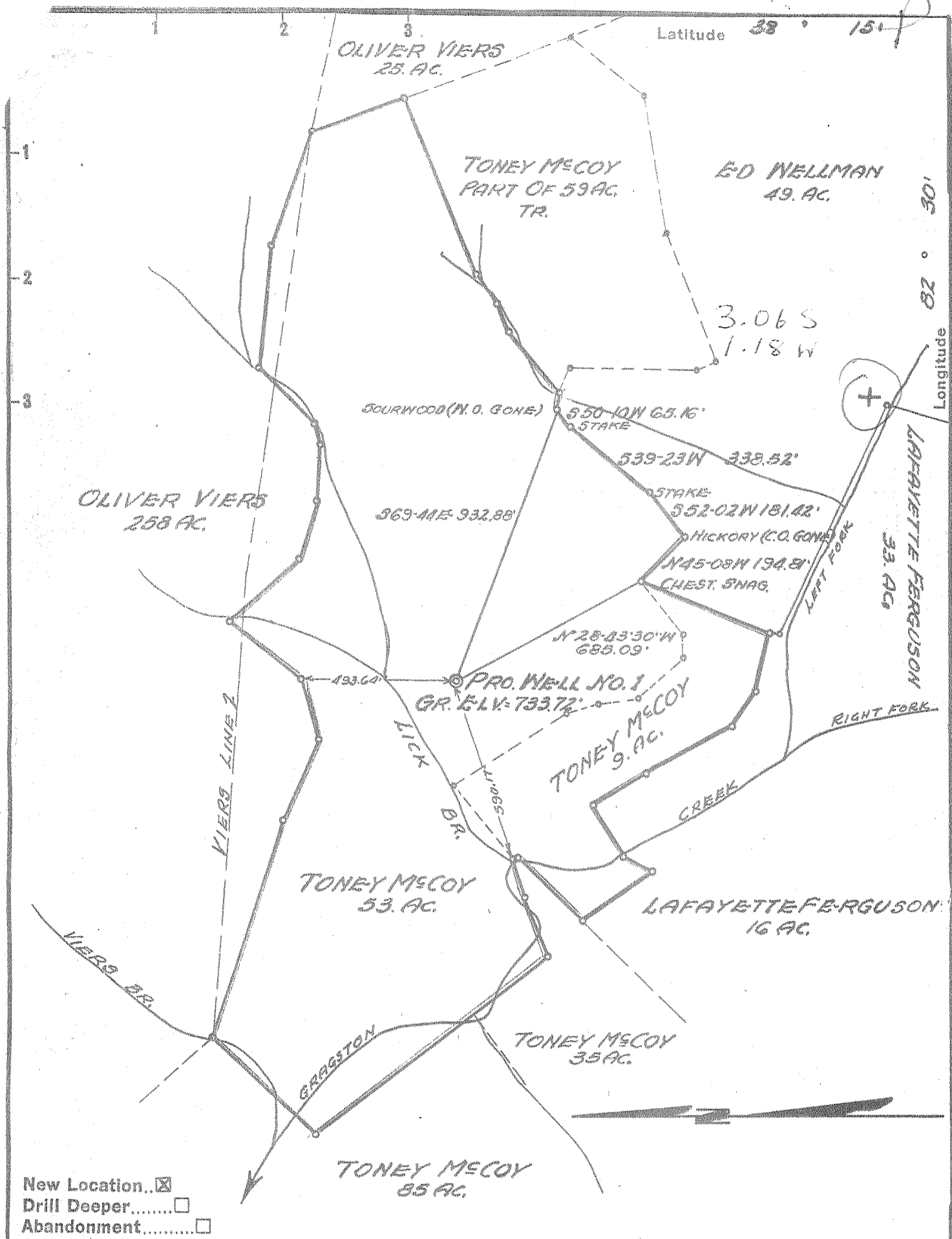
WELL LOCATION MAP
 FILE NO. WAY-982-P

+ Denotes location of well on United States Topographic Maps, scale 1 to 62,500, latitude and longitude lines being represented by border lines as shown.

- Denotes one inch spaces on border line of original tracing.

47099 FEB 26 1975

Deep Well



New Location...
 Drill Deeper.....
 Abandonment.....

Company	CHARTIERS OIL CO.		
Address	PITTSBURGH, PA.		
Farm	TONEY MESCOY		
Tract	Acres	Lease No.	
	53	3328	
Well (Farm) No.	1	Serial No.	
Elevation (Spirit Level)	733.72'		
Quadrangle	LOUISA N E		
County	WAYNE	District	BUTLER
Engineer	D.E. Wood		
Engineer's Registration No.	270		
File No.	No. 54203	Drawing No.	
Date	AUG. 6, 1955 Scale 1" = 100'		

STATE OF WEST VIRGINIA
 DEPARTMENT OF MINES
 OIL AND GAS DIVISION
 CHARLESTON

WELL LOCATION MAP
 FILE NO. WAY-982

+ Denotes location of well on United States Topographic Maps, scale 1 to 62,500, latitude and longitude lines being represented by border lines as shown.

- Denotes one inch spaces on border line of original tracing.

6-6-229

Deep Well



STATE OF WEST VIRGINIA
DEPARTMENT OF MINES
OIL AND GAS DIVISION 12

Louisa

WELL RECORD

Permit No. Wayne 982

Oil or Gas Well GAS
(KIND)

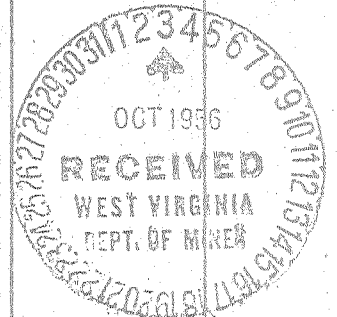
Company The Chartiers Oil Company
Address 1518 Farmers Bank Building
Pittsburgh 22, Pa.
Farm Toney McCoy Acres 233
Location (waters) Gragston Creek
Well No. 1 Elev. 733.72
District Butler County Wayne
The surface of tract is owned in fee by Toney McCoy &
Della McCoy Address Prichard, W. Va.
Mineral rights are owned by Toney McCoy & wife 3/4
United Fuel Gas 1/4 Address Charleston, W. Va.
Drilling commenced April 7, 1956
Drilling completed July 5, 1956
Date Shot Acid 8/7/56 from 1000 gal. to
With Acid 9/12/56 2500 gal.
Open Flow 14 /10ths Water in 1" Inch
 /10ths Merc. in Inch
Volume 40 MCF Cu. Ft.
Rock Pressure 550 lbs. 15 hrs.
Oil None bbls., 1st 24 hrs.
Fresh water 860 feet
Salt water feet

Casing and Tubing	Used in Drilling	Left in Well	Packers
Size			
18 Wood	16	16	Kind of Packer
18			Wall & Anchor
10	200	200	Size of <u>5 1/2" x 2"</u>
8 3/4	1175	1175	
8 3/8	2195	2195	Depth set <u>3652</u>
5 8/16 17#	3373	3373	
3			Perf. top
2 EUB	3733	3733	Perf. bottom
Liners Used			Perf. top
			Perf. bottom

CASING CEMENTED 5 1/2" SIZE No. Ft. 6/6/56 Date
25 sacks

COAL WAS ENCOUNTERED AT FEET INCHES
FEET INCHES FEET INCHES
FEET INCHES FEET INCHES

Formation	Color	Hard or Soft	Top	Bottom	Oil, Gas or Water	Depth Found	Remarks
Surface			0	25			
Sand			35	50			
Slate			50	150			
Sand			150	225			
Sand & Shale			225	306	Water	306	1/2 bailer
Sand			306	400			
Shale			400	730			
Shells			740	843			
Salt Sand			843	935	Water	860	Hole full
Salt Sand-break			935	937			
Salt Sand			937	945			
Salt Sand-break			945	950			
Salt Sand			950	977			
Salt Sand-break			977	982			
Salt Sand			982	1100			
Shale			1100	1145			
Shells			1145	1147			
Little Lime			1147	1171			
Pencil Cave			1171	1172			
Big Lime			1172	1325			
Slate			1325	1328			
Injun Sand			1328	1500	Gas	1459 & 1474	
Slate			1500	1690			
Shell			1690	1700			
Slate			1700	1803			
Shell			1803	1812			
Slate			1812	1839			
Shell			1839	1865			
Slate			1865	1900			
Shell			1900	1912			
Slate			1912	1928			
Coffee Shale			1928	1957	Gas	1957 1/2 - 1961	Gauged 4/10 water on 2".
Berea Sand			1957	1965			
Berea Shells			1965	2060			
Shale	Black		2060	2200			
Shale	Grey		2200	2365			
Shale	Brown		2365	2792			
Shale	White		2792	2978			



Formation	Color	Hard or Soft	Top ¹²	Bottom	Oil, Gas or Water	Depth Found	Remarks
Shale Corniferous	Brown Lime		2978 3004	3004 3733	Black Wtr.	3192	Poison gas at 3200' 3270' . Poison gas at 3500'.
			3004 734 <u>2270</u>		Water	3329	Six bailers in 24 hrs. at 3407.

September 12, 1956 well acidized the second time. Open flow before acidizing 84,000 cu. ft. Acidized with 2500 gallon and after 24 hours gauged 50/10 water 2" or 300,000 cu. ft.

Date September 28th, 19 56