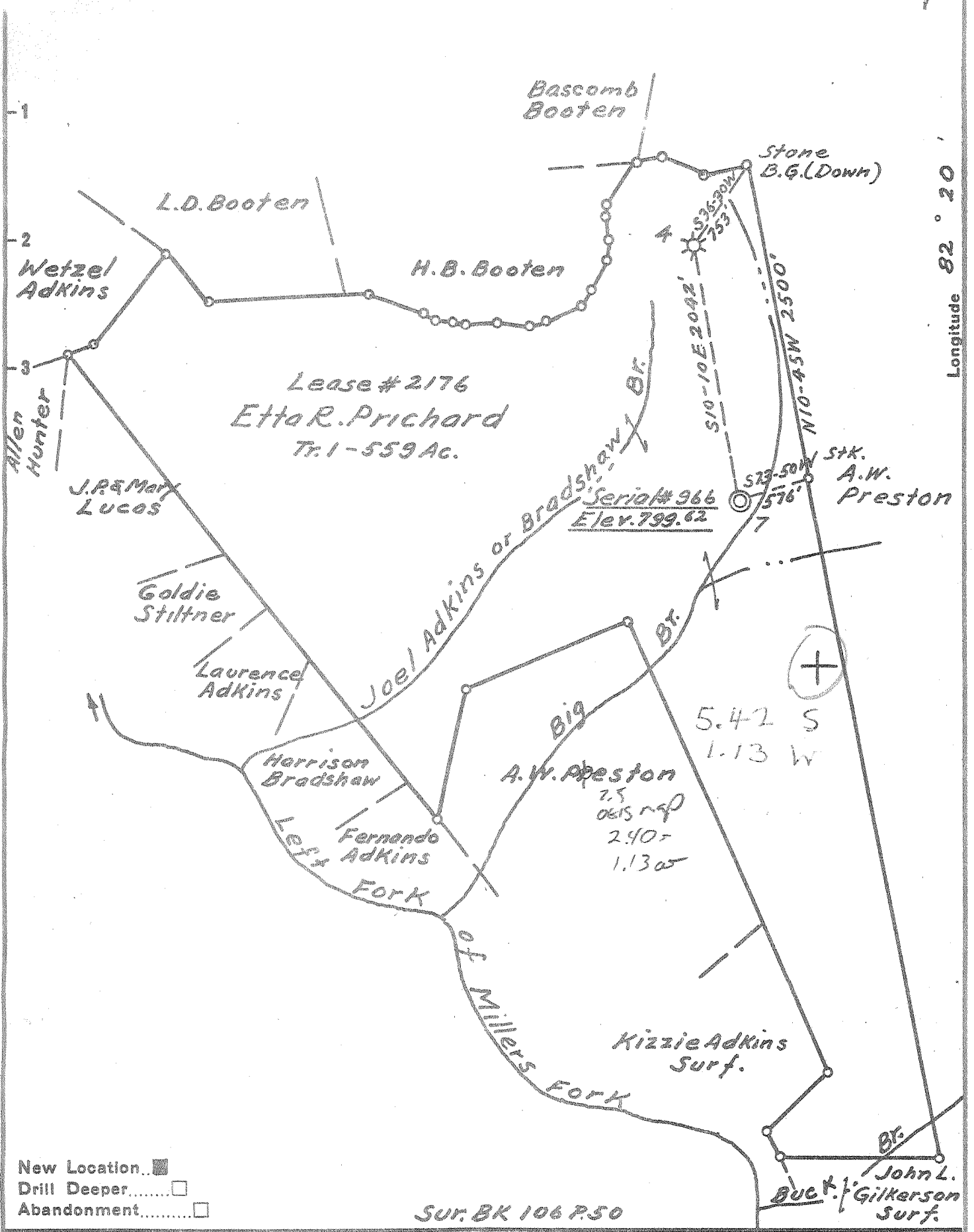


38° 17' 30"

Latitude 38° 20'

Longitude 82° 20'



Company Owens, Libbey-Owens Gas Dept.  
 Address Box 4158 Charleston 4 W. Va.  
 Farm Etta R. Prichard  
 Tract 1 Acres 559 Lease No. 2176  
 Well (Farm) No. 7 Serial No. 966  
 Elevation (Spirit Level) 799.62  
 Quadrangle Guyardet 55.50" W 123"  
 County Wayne District Union  
 Engineer T.S. Flournoy  
 Engineer's Registration No. 269  
 File No. \_\_\_\_\_ Drawing No. \_\_\_\_\_  
 Date Sept. 23, 1955 Scale 1" = 1000'

STATE OF WEST VIRGINIA  
 DEPARTMENT OF MINES  
 OIL AND GAS DIVISION  
 CHARLESTON

**WELL LOCATION MAP**  
 FILE NO. WAY-987

+ Denotes location of well on United States Topographic Maps, scale 1 to 62,500, latitude and longitude lines being represented by border lines as shown.  
 - Denotes one inch spaces on border line of original tracing.

(231) Deep Well



STATE OF WEST VIRGINIA  
DEPARTMENT OF MINES  
OIL AND GAS DIVISION 8

Quadrangle Wayne

Permit No. Way-987

WELL RECORD

Oil or Gas Well Gas

(KIND)

Company OWENS, LIBBEY-OWENS GAS DEPARTMENT  
Address P. O. Box 4158, Charleston 4, W. Va.  
Farm Etta R. Pritchard Acres 559  
Location (waters) \_\_\_\_\_  
Well No. 7 (Serial No. 966) Elev. 799.62  
District Union County Wayne  
The surface of tract is owned in fee by \_\_\_\_\_  
Address \_\_\_\_\_  
Mineral rights are owned by Etta R. Pritchard  
Address Wayne, W. Va.  
Drilling commenced 10-7-55  
Drilling completed 12-17-55  
Date Shot 12-19-55 From 2682 To 3570  
With 8600# Detonite

Casing and Tubing	Used in Drilling	Left in Well	Packers
Size			
16			Kind of Packer
18			Wall Anchor
10			Size of
8 1/4 5/8	320'5"	320'5"	3 1/2 x 7 x 16
XX 7"	1662'5"	1662'5"	Depth set
5 3/16			1668 - 1671
3 1/2	---	3473'3"	Perf. top 2970
2			Perf. bottom 3473
Liners Used			Perf. top
			Perf. bottom

Open Flow /10ths Water in \_\_\_\_\_ Inch  
/10ths Merc. in \_\_\_\_\_ Inch  
Volume Shale & Cornif. Lime 133 M Cu. Ft.  
Rock Pressure 240 lbs. 137 hrs.  
Oil \_\_\_\_\_ bbls., 1st 24 hrs.  
Fresh water 88, 380, 100 feet  
Salt water 1018-1032 feet

CASING CEMENTED	SIZE	No. Ft.	Date
COAL WAS ENCOUNTERED AT	FEET	INCHES	
	FEET	INCHES	FEET INCHES
	FEET	INCHES	FEET INCHES

Formation	Color	Hard or Soft	Top	Bottom	Oil, Gas or Water	Depth Found	Remarks
Sand	Yellow	Soft	0	38			
Slate	Blue	Soft	38	44			
Sand	Grey	Hard	44	58			
Sand	Light	Hard	58	85			
Slate	Light	Soft	85	95			
Red Rock	Red	Soft	95	105			
Slate	Grey	Soft	105	108			
Slate	Light	Soft	108	114			
Red Rock	Red	-	114	120			
Sand	Light	-	120	145			
Slate	-	-	145	163			
Sand	Light	Soft	163	193			
Slate	Dark	Soft	193	216			
Slate	Light	Soft	216	236			
Sand	Light	Med.	236	251			
Slate	Light	Soft	251	269			
Sand	White	Med.	269	289			
Slate	White	Soft	289	310			
Slate	Dark	Soft	310	325			
Sand, Bro.	Grey	Soft	325	402			
Sand	White	Med.	402	449			
Sand	Light	Soft	449	479			
Sl. & Shls.	Light	Soft	479	516			
Sand, Bro.	Light	Soft	516	566			
Sand	White	Med.	566	612			
Slate Break	Light	Soft	612	622			
Sand	White	Med.	622	703			
Slate	Dark	Soft	703	713			
Sand, Bro.	Dark	Soft	713	735			
Sand	White	Hard	735	750			
Sand, Bro.	Dark	Soft	750	920			
Sand	White	Hard	920	935			
Sand, Bro.	Dark	Med.	935	963			
Sand, Bro.	Light	Med.	963	1013			
Sand	White	Hard	1013	1017			
Sand, Settling	Light	Med.	1017	1037			

(Over)

Formation	Color	Hard or Soft	Top	Bottom	Oil, Gas or Water	Depth Found	Remarks
Sand	Light	Hard	1037	1042			
Water Sand	White	Med.	1042	1052			
Sand	-	Hard	1052	1068			
Sand	Light	Med.	1068	1099			
Slate	Dark	Soft	1099	1115			
Sl. & Shls.	Light	Med.	1115	1177			
Sand	Light	Med.	1177	1205			
Sand	Light	Soft	1205	1263			
Sand, Limey	White	Hard	1263	1281			
Slate	Light	Soft	1281	1318			
Red Rock	Red	Soft	1318	1323			
Slate	Dark	Soft	1323	1333			
Slate	Light	Soft	1333	1338			
Slate	Dark	Soft	1338	1348			
Little Lime	Dark	Hard	1348	1376			
Slate	Light	Soft	1376	1379			
Big Lime	White	Hard	1379	1495			
Big Lime	Light	Hard	1495	1534	Oil Show at 1503 ft. Water level 300' at 1528'		
Grey Injun	Grey	Hard	1534	1546			
Injun Sand	Light	Hard	1546	1627			
Sand, Bro.	Dark	Med.	1627	1648			
Slate	Dark	Soft	1648	1658			
Lime Shells	Dark	Hard	1658	1661	Ran 7" casing on shoe at 1661 ft.		
Shell	Dark	Hard	1661	1668			
Lime Shells	Dark	Soft	1668	1709			
Slate	Grey	Soft	1709	1753			
Sl. & Shls.	Dark	Soft	1753	1923			
Shells	Light	Hard	1923	1928			
Slate	Light	Soft	1928	1938			
Sl. & Shls.	Light	Soft	1938	1985			
Sl. & Shls.	Dark	Soft	1985	2024			
Sl. & Shls.	Light	Soft	2024	2064			
Lime Shells	Dark	Med.	2064	2088			
Shells	Light	Hard	2088	2093			
Sl. & Shls.	Light	Soft	2093	2126			
Slate	Light	Soft	2126	2153			
Coffee Shale	Brown	-	2153	2168			
Berea Sand	Grey	Med.	2168	2195			
Berea Sand	Grey	Hard	2195	2200			
Slate	Light	Soft	2200	2206			
Sl. & Shls.	Light	Soft	2206	2284			
Sl. & Shls.	Brown	Soft	2284	2320			
Slate	Light	Soft	2320	2329			
Shells	Dark	Hard	2329	2339			
Sl. & Shls.	Light	Soft	2339	2684			
Brown Shale	Brown	Soft	2684	2813			
Slate	Light	Soft	2813	2828			
Brown Shale	Brown	Soft	2828	2910			
Slate	Light	Soft	2910	2935			
Brown Shale	Brown	Soft	2935	3158			
Slate	Light	Soft	3158	3170	Gas 3086 Test 3108-3118 Gas 3134-3170 Water found in well approximately 25 gal. per hour. May be with gas. 11-29-55 Set up bridge and testing for water. Bottom of bridge 1727' Top of bridge 1670' Tested 7" casing 33 hours - dry. 12-1-55 Drilling out bridge. Drying up hole to 2220 ft. 12-6-55 Bailed hole dry. Tested for 24 hours. Water decreased from 6 gal.	24.7 M 4.9 M 33.2 M	

Date December 30, 1955

APPROVED OWENS, LIBBEY-OWENS GAS DEPARTMENT, Owner

By A. H. Smith (Title) Geologist



STATE OF WEST VIRGINIA  
DEPARTMENT OF MINES  
OIL AND GAS DIVISION 8-12

Quadrangle Wayne

Permit No. Way-987

WELL RECORD

Oil or Gas Well \_\_\_\_\_  
(KIND)

Company OWENS, LIBBEY-OWENS GAS DEPARTMENT  
Address P. O. Box 4158, Charleston 4, W. Va.  
Farm Etta R. Pritchard Acres 559  
Location (waters) \_\_\_\_\_  
Well No. 7 (Serial No. 966) Elev. 799.62  
District Union County Wayne  
The surface of tract is owned in fee by \_\_\_\_\_  
Address \_\_\_\_\_  
Mineral rights are owned by Etta R. Pritchard  
Address Wayne, W. Va.  
Drilling commenced \_\_\_\_\_  
Drilling completed \_\_\_\_\_  
Date Shot \_\_\_\_\_ From \_\_\_\_\_ To \_\_\_\_\_  
With \_\_\_\_\_  
Open Flow \_\_\_\_\_ /10ths Water in \_\_\_\_\_ Inch  
\_\_\_\_\_ /10ths Merc. in \_\_\_\_\_ Inch  
Volume \_\_\_\_\_ Cu. Ft.  
Rock Pressure \_\_\_\_\_ lbs. \_\_\_\_\_ hrs.  
Oil \_\_\_\_\_ bbls., 1st 24 hrs.  
Fresh water \_\_\_\_\_ feet \_\_\_\_\_ feet  
Salt water \_\_\_\_\_ feet \_\_\_\_\_ feet

Casing and Tubing	Used in Drilling	Left in Well	Packers
Size			
16			Kind of Packer
18			
10			Size of
8 1/4			
6 1/2			Depth set
5 3/16			
3			Perf. top
2			Perf. bottom
Liners Used			Perf. top
			Perf. bottom

CASING CEMENTED \_\_\_\_\_ SIZE \_\_\_\_\_ No. Ft. \_\_\_\_\_ Date \_\_\_\_\_

COAL WAS ENCOUNTERED AT \_\_\_\_\_ FEET \_\_\_\_\_ INCHES  
\_\_\_\_\_ FEET \_\_\_\_\_ INCHES \_\_\_\_\_ FEET \_\_\_\_\_ INCHES  
\_\_\_\_\_ FEET \_\_\_\_\_ INCHES \_\_\_\_\_ FEET \_\_\_\_\_ INCHES

Formation	Color	Hard or Soft	Top	Bottom	Oil, Gas or Water	Depth Found	Remarks
Continued from previous page:							
Slate	Light	Soft	3170	3241	per hour on first hour to 2 1/2 gal. per hour on 2 1/4 hr. Resumed drilling at 3170 ft. Test 3176	33.2 M	
Br. Shale	Brown	Soft	3241	3251			
Slate	Light	Soft	3251	3378			
Br. Shale	Brown	Soft	3378	3445			
Cornif. Lime	Grey	Hard	3445	3458	12-10-55 Dried up hole and tested rate of water entry. First 5 hours averaged 2 1/2 gal. Test 3509 Gas 3512	33 M 37.5 M	
Cornif. Lime	Light	Hard	3458	3565			
Cornif. Lime	Light	Soft	3565	3571	Bailed hole dry and shut down at 3525 for 2 1/4 hour test of water. Test 3571	33 M	
			Total Depth	3571			
			Total Depth After Shot	3488			
				3445			
					12-17-55 Bailed hole dry. Tested for water for 7 hours. Water entry decreased from 1 gal. at first hour to 3/4 gal. at seventh hour.		
					12-19-55 Shot well with 8,600# Detonite from 2482 to 3570. Test before shot:	33.2 M	
					" 15 Min. A.S.:	922 M	
					" 1 Hr. "	302 M	
					" 12 Hrs. "	163 M	
					" 25 " "	147 M	

Formation	Color	Hard or Soft	Top <i>8-17</i>	Bottom	Oil, Gas or Water	Depth Found	Remarks
					12-20-55 Ran 3½" tubing to 3473' and hung on wall-anchor packer set at 1668 - 1671'.		Perforations from 2970 to 3473'
					Final open flow:		Shale & Coniferous Lime 133 M
					Well shut-in 33 hours after shot.		

Date December 30, 1955

APPROVED OWENS, LIBBEY-OWENS GAS DEPARTMENT, Owner

By A. H. Smith (Title) Geologist