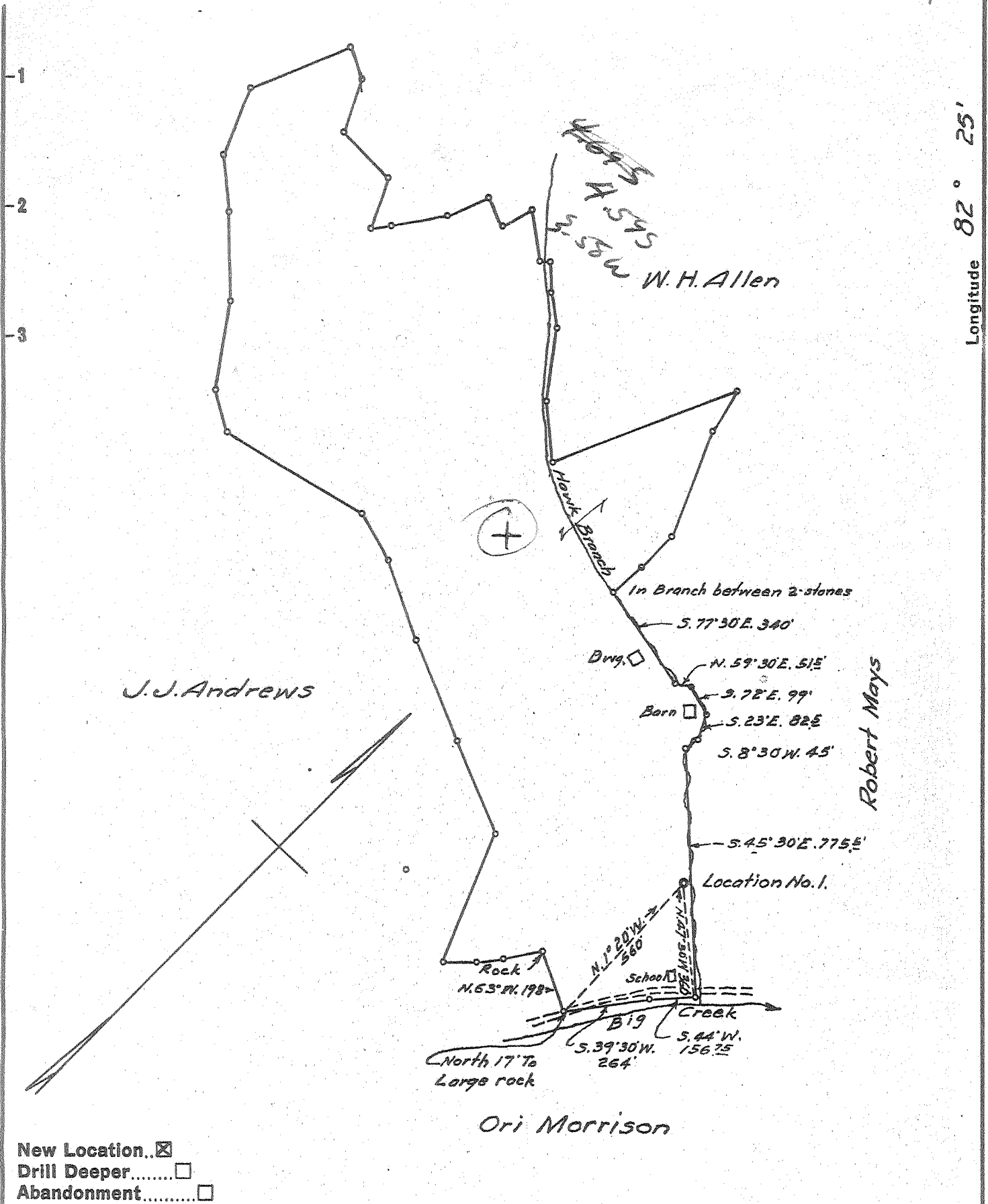


Latitude 38° 20'

Longitude 82° 25'



New Location...   
 Drill Deeper.....   
 Abandonment.....

Company WEBSTER MYERS  
 Address HUNTINGTON, W. VA.  
 Farm R. K. FRY  
 Tract \_\_\_\_\_ Acres 57 Lease No. \_\_\_\_\_  
 Well (Farm) No. 1 Serial No. \_\_\_\_\_  
 Elevation (Spirit Level) 655  
 Quadrangle GUYANDOT SW  
 County WAYNE District UNION  
 Engineer G. C. Ewing  
 Engineer's Registration No. 309  
 File No. \_\_\_\_\_ Drawing No. \_\_\_\_\_  
 Date 6-12-56 Scale 1" = 400'

STATE OF WEST VIRGINIA  
 DEPARTMENT OF MINES  
 OIL AND GAS DIVISION  
 CHARLESTON

**WELL LOCATION MAP**  
 FILE NO. WAY-1017

+ Denotes location of well on United States Topographic Maps, scale 1 to 62,500, latitude and longitude lines being represented by border lines as shown.  
 — Denotes one inch space on border line of original tracing.

Deep Well



STATE OF WEST VIRGINIA  
DEPARTMENT OF MINES  
OIL AND GAS DIVISION

Quadrangle Musandot  
Permit No. Way-1017

WELL RECORD

Oil or Gas Well Gas  
(KIND)

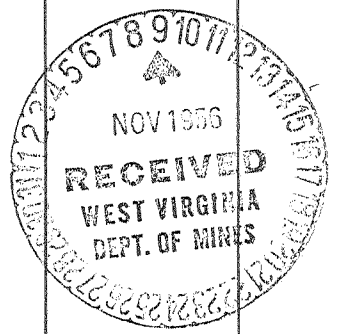
Company Big Creek Gas Company (Webster Myers)  
Address 1614 7th Ave., Huntington, W. Va.  
Farm R.K. Fry Acres 57  
Location (waters) Big Creek  
Well No. 1 Elev. 655  
District Union County Wayne  
The surface of tract is owned in fee by R.K. Fry  
RFD #1 Wayne Address \_\_\_\_\_  
Mineral rights are owned by Same Address \_\_\_\_\_  
Drilling commenced July 7, 1956  
Drilling completed Oct 26, 1956  
Date Shot End shot Oct 28, 1956  
From 3790 To 3810  
With 1st shot 200 lbs Gel 2nd shot 1050 lbs Gel

Casing and Tubing	Used in Drilling	Left in Well	Packers
Size			Bottom Hole
16			Wall and anchor
13	53	53	Kind of Packer
10	263	Pulled	6-5/8"x8 1/2"x16
8 1/4	1249	Pulled	Size of
6% (1285)	2163	2163	3"x6-5/8"x24"
5 3/16			Depth set 2163
3 (3866)	3828	3828	3424
2			Perf. top 3800
Liners Used	(68) 3828	3760	Perf. bottom 3828
			Perf. top
			Perf. bottom

Open Flow 8/10ths Water in 2 Inch  
/10ths Merc. in Inch  
Volume 120 M Cu. Ft.  
Rock Pressure 1200 lbs. 20 hrs.  
Oil \_\_\_\_\_ bbls., 1st 24 hrs.  
Fresh water 25 feet  
350 1 barrel per hr feet  
Salt water 965 Hole full feet

Aquagell between 3" & 7" 50 sacks  
CASING CEMENTED none SIZE No. Ft. Date  
COAL WAS ENCOUNTERED AT none FEET INCHES  
FEET INCHES FEET INCHES  
FEET INCHES FEET INCHES

Formation	Color	Hard or Soft	Top	Bottom	Oil, Gas or Water	Depth Found	Remarks
Slate			0	15			
Sand			15	35	Water fresh at 25 ft		
Slate			35	43	Salt Water 1 bbl per hr 350		
Sand			43	60	Hole full water 965		
Slate			60	140			
Sand			140	175			
Slate			175	260			
Sand			260	280			
Slate			280	345			
Sand			345	410			
Slate			410	540			
Sand, broken			540	680			
Slate			680	935			
Salt Sand			935	1130			
Slate			1130	1155			
Maxon Sand			1155	1205			
Slate			1205	1230			
Little Lime			1230	1246			
Pencil Cave			1246	1248			
Big Lime			1248	1396	Show of gas 2860		
Injun Sand			1396	1500	Gas at 2880 2/10 Water 1"		
Slate & Shells			1500	2045	Gas at 3305 increased to 4/10 W		
Coffie Shale			2045	2074	1" opening-Hyd. Sulphide gas		
Berea Sand			2074	2094	Water at 3395-Heavy with Hyd		
Sandy Shells			2094	2105	Supphide		
Slate			2105	2152			
Brown Shale			2152	2260	7" Casing set 2163		
Slate			2260	2490	gas increased to 5/10 Water 2"		
Brown Shale			2490	2550	at 3793 Well shot twice blew		
Slate			2550	2600	open 10 days tested 8/10 Water		
Brown Shale			2600	2710	2"		
Slate			2710	2735	Big Six 3790 to 3800		
Brown Shale			2735	2800	Slate 3800 to 3828		
Slate			2800	2818	total depth 3828		
Brown Shale			2818	2918			
Slate			2918	3100			
Brown Shale			3100	3123			
Corniferous Lime			3123	3190			



3123  
655  
2116