

Non-Location
 Drill Deeper
 Abandonment *10/25/73*

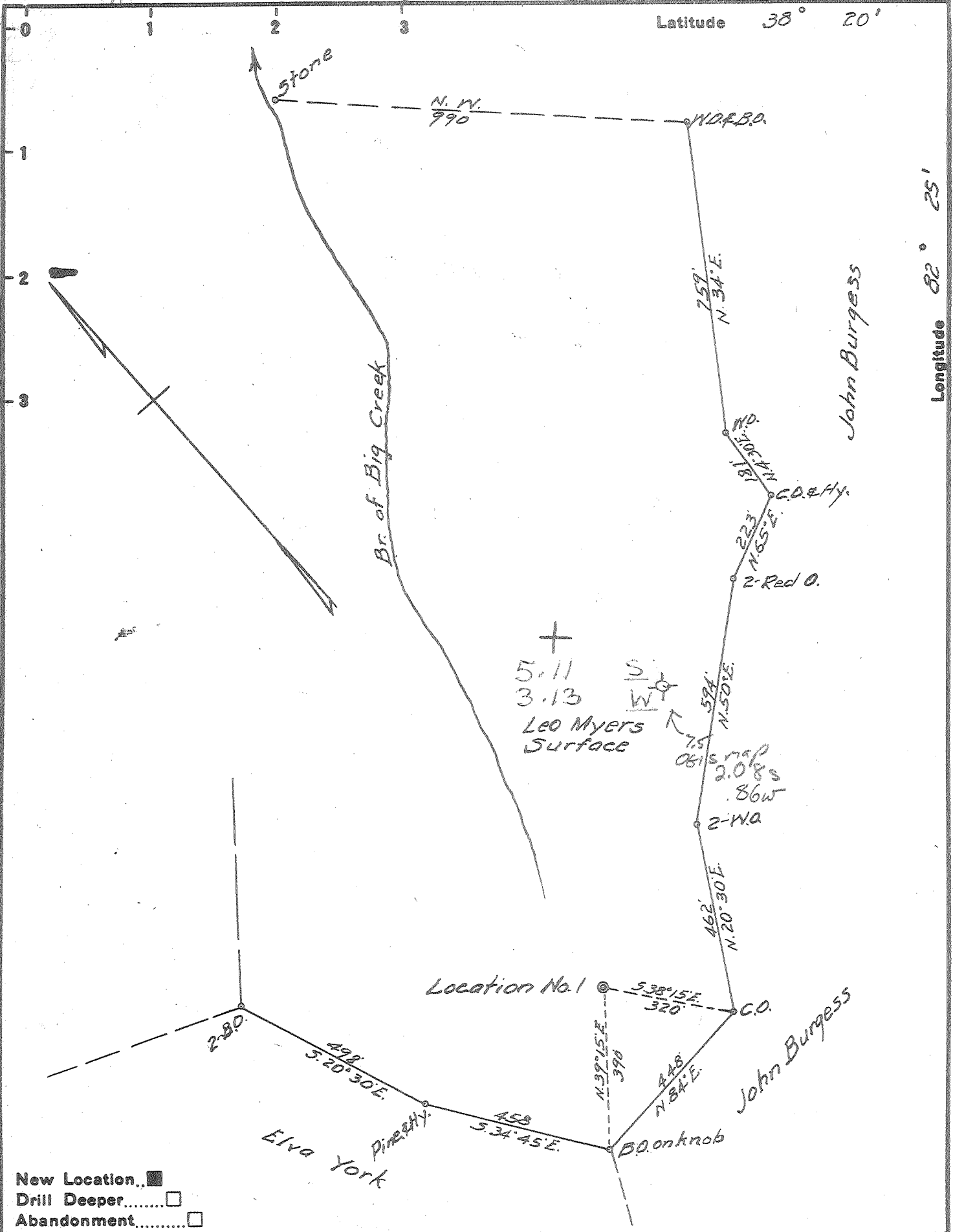
Company WEBSTER MYERS (Helen C. Gas Co.)
 Address HUNTINGTON, W. Va.
 Farm Z. C. PERDUE (LEO MYERS SURFACE)
 Tract _____ Acres 25 Lease No. _____
 Well (Farm) No. 1 Serial No. _____
 Elevation (Spirit Level) 900
 Quadrangle GUYANDOT SW
 County WAYNE District UNION
 Engineer G. R. Goring
 Engineer's Registration No. 309
 File No. _____ Drawing No. _____
 Date 5-11-57 Scale 1" = 300'

STATE OF WEST VIRGINIA
 DEPARTMENT OF MINES
 OIL AND GAS DIVISION
 CHARLESTON

WELL LOCATION MAP
 FILE NO. WAY-1194-P

⊕ Denotes location of well on United States Topographic Maps, scale 1 to 62,500, latitude and longitude lines being represented by border lines as shown.
 --- Denotes one inch spaces on border line of original tracing.

Deep Well



New Location
 Drill Deeper
 Abandonment

Company	<u>WEBSTER MYERS</u>
Address	<u>HUNTINGTON, W. VA.</u>
Farm	<u>Z. C. PERDUE (LEO MYERS SURFACE)</u>
Tract	Acres <u>75</u> Lease No. _____
Well (Farm) No.	<u>1</u> Serial No. _____
Elevation (Spirit Level)	<u>900</u>
Quadrangle	<u>GUYANDOT-SW</u>
County	<u>WAYNE</u> District <u>UNION</u>
Engineer	<u>J. B. Curing</u>
Engineer's Registration No.	<u>309</u>
File No.	_____ Drawing No. _____
Date	<u>5-11-59</u> Scale <u>1" = 300'</u>

STATE OF WEST VIRGINIA
 DEPARTMENT OF MINES
 OIL AND GAS DIVISION
 CHARLESTON

WELL LOCATION MAP
 FILE NO. WAY-1194

† Denotes location of well on United States Topographic Maps, scale 1 to 62,500, latitude and longitude lines being represented by border lines as shown.
 — Denotes one inch spaces on border line of original tracing.

Deep Well



STATE OF WEST VIRGINIA
DEPARTMENT OF MINES
OIL AND GAS DIVISION

Quadrangle Waynesville
W. Va. 1194

WELL RECORD

Oil or Gas Well Gas
(KIND)

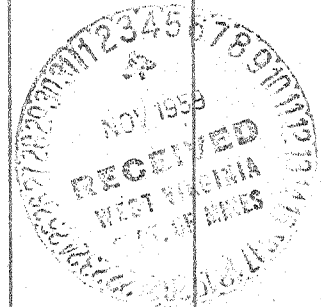
Permit No. _____
Company Helen C Gas Co. (Webster Myers)
Address 1614 7th Ave Huntington, W. Va.
Farm Z.C. Perdue Acres 75
Location (waters) Big Creek
Well No. 1 Elev. 900
District Union County Wayne
The surface of tract is owned in fee by Leo Myers
RFD Wayne, W. Va. Address
Mineral rights are owned by Z.C. Perdue
RFD Wayne, W. Va. Address
Drilling commenced May 30, 1959
Drilling completed Oct 6, 1959
Date Shot 10/6/59 From 500 lbs GNS
To 2150 lbs GNS
With shot 10-13-59 To 2150 lbs GNS
Shot 4012 to 4052

Casing and Tubing	Used in Drilling	Left in Well	Packers
Size			Kind of Packer
16			B. Hole
13	31-6	pulled	Wall & Anc
10	263	263	Size of
8 1/2	1384	pulled	7"x8 1/2"x216"
6 1/2	1801	1801	Depth set
5 1/2			1801
5	4082	4082	3842
4			Perf. top 4060
3			Perf. bottom 4082
2			Perf. top
1	5" 89' 4082-	3993	Perf. bottom

Open Flow /10ths Water in _____ Inch
/10ths Merc. in _____ Inch
Volume 203 M Cu. Ft.
Rock Pressure 1100 lbs. 48 hrs.
Oil _____ bbls., 1st 24 hrs.
Fresh water 1 bbl per hour at 600 feet
Salt water hole full feet 1180 feet

CASING CEMENTED _____ SIZE _____ No. Ft. _____ Date _____
none
COAL WAS ENCOUNTERED AT None FEET _____ INCHES
FEET _____ INCHES FEET _____ INCHES
FEET _____ INCHES FEET _____ INCHES

Formation	Color	Hard or Soft	Top	Bottom	Oil, Gas or Water	Depth Found	Remarks
Surface			0	19			
Blue Slate			19	34			
Red Rock			34	54			
Slate			54	64			
Sand			64	110			
Slate			110	150			
Sand			150	225			
Blue Slate, Broken			225	332			
Coal or black Slate			332	334	Water level down 400 ft		
Slate			334	540			
Sand			540	600			
Slate			600	810			
Sand			610	870			
Slate			870	1170			
Salt Sand			1170	1275			
Slat & Shells			1275	1348			
Maxton Sand			1348	1372			
Lime Shell			1372	1375			
Red & Green Shells			1375	1377			
Lime			1377	1388			
Slate & Shells			1377	1448	Cave 1388		
Little Lime			1448	1463			
Brake			1463	1465			
Big Lime			1465	1620	Water at 1510-Show of gas 1598-1602		
Blue Injun			1620	1700	Show of oil 2245-2260		
Slate & Shells			1700	2255	Show of gas 2870-2880		
Coffie Shale			2255	2245	Sulpher gas just a little at		
Herea		2245	2245	2260	3420		
Slate & Shells			2260	2377	Black water just a little 3530		
Black Shale			2377	2450	Gas pays 4012 - 4024-4032-4038		
Grey Slate			2450	2735	Test before shot 6/10 Water 2"		
Brown Shale			2735	2785			
Grey Shale			2785	2810			
Brown Shale			2810	3115			
Slate			3115	3317			
Brown Shale			3317	3348			
Corniferous Lime			3348	4012			
Big Six			4012	4052			
Slate			4052	4082	(Over) 4082 Total depth		



103 MCF
3348