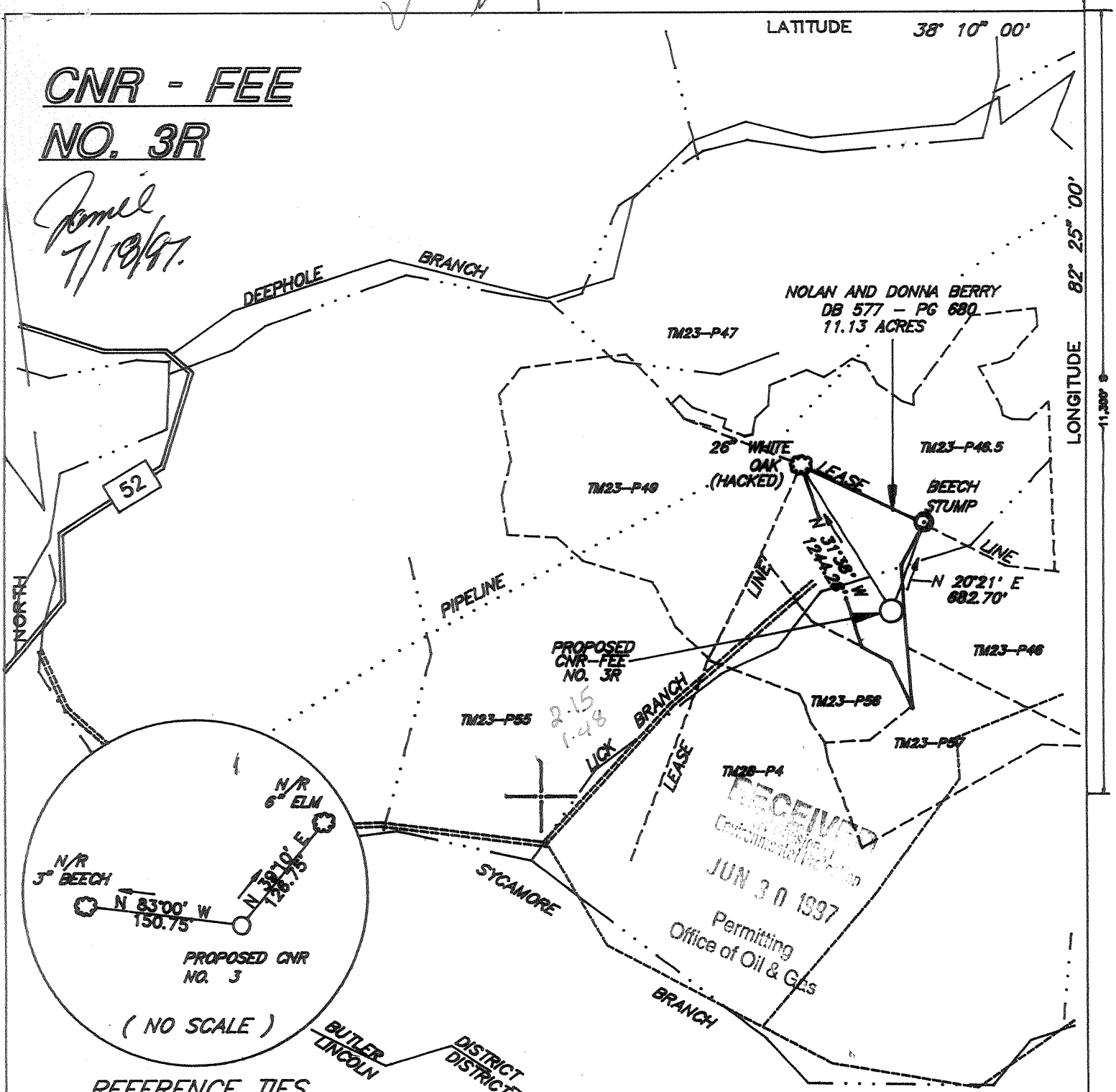


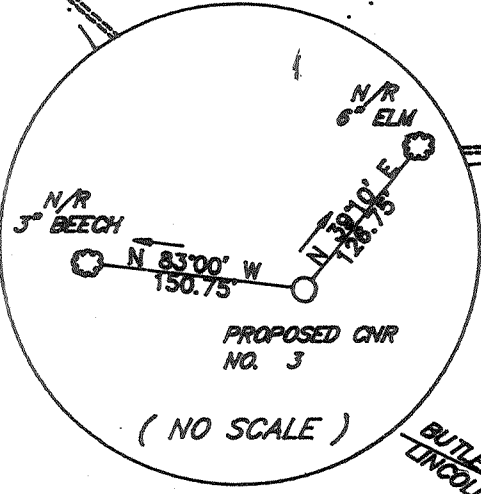
**CNR - FEE
NO. 3R**

*Amel
7/19/97*



7,900' W
LATITUDE 38° 10' 00"

LONGITUDE 82° 25' 00"

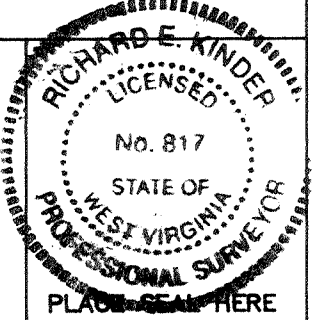


REFERENCE TIES

(+) DENOTES LOCATION OF WELL ON UNITED STATES TOPOGRAPHIC MAPS

FILE NO. 97041
DRAWING NO. 97041P
SCALE 1" = 1000'
MINIMUM DEGREE OF ACCURACY 1 : 2500
PROVEN SOURCE OF ELEVATION SPOT ELEV. TOP OF KNOB
EL. 1058'

I THE UNDERSIGNED, HEREBY CERTIFY THAT THIS PLAT IS CORRECT TO THE BEST OF MY KNOWLEDGE AND BELIEF AND SHOWS ALL THE INFORMATION REQUIRED BY LAW AND THE REGULATIONS ISSUED AND PRESCRIBED BY THE DEPARTMENT OF ENERGY.
(SIGNED) *Richard E. Kinder*
R.P.E. _____ L.L.S. 817



WEST VIRGINIA
DIVISION OF ENVIRONMENTAL PROTECTION
OFFICE OF OIL AND GAS
#10 McJUNKIN ROAD
NITRO, WEST VIRGINIA 25143-2506



DATE JUNE 6, 1997
OPERATOR'S WELL NO. CRN - 3R
API WELL NO. 47-099-01912
STATE COUNTY PERMIT

WELL TYPE: OIL GAS LIQUID INJECTION WASTE DISPOSAL
(IF "GAS,") PRODUCTION STORAGE DEEP SHALLOW
LOCATION: ELEVATION 818' WATERSHED LICK BRANCH OF SYCAMORE BRANCH
DISTRICT BUTLER COUNTY WAYNE
QUADRANGLE WAYNE 7.5'

SURFACE OWNER NOLAN AND DONNA BERRY ACREAGE 11.13 ACRES
OIL & GAS ROYALTY OWNER COLUMBIA NATURAL RESOURCES LEASE ACREAGE 1.385 ACRES
LEASE NO. _____

PROPOSED WORK: DRILL CONVERT DRILL DEEPER REDRILL FRACTURE OR
STIMULATE PLUG OFF OLD FORMATION PERFORATE NEW
FORMATION OTHER PHYSICAL CHANGE IN WELL (SPECIFY) _____

PLUG AND ABANDON CLEAN OUT AND REPLUG
TARGET FORMATION *Big Box* ESTIMATED DEPTH 4025'
WELL OPERATOR CABOT OIL & GAS CORP. DESIGNATED AGENT JOHN ABSHIRE
ADDRESS P.O. BX 1473 CHARLESTON, WV ADDRESS P.O. BOX 454 GLASGOW, WV 25086

COUNTY NAME
PERMIT

JUL 18 1997

DEEP WELL

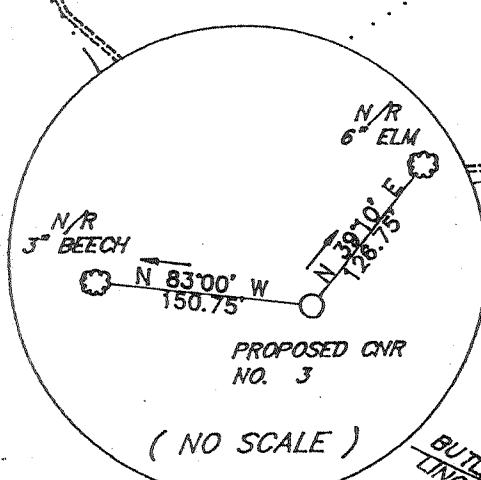
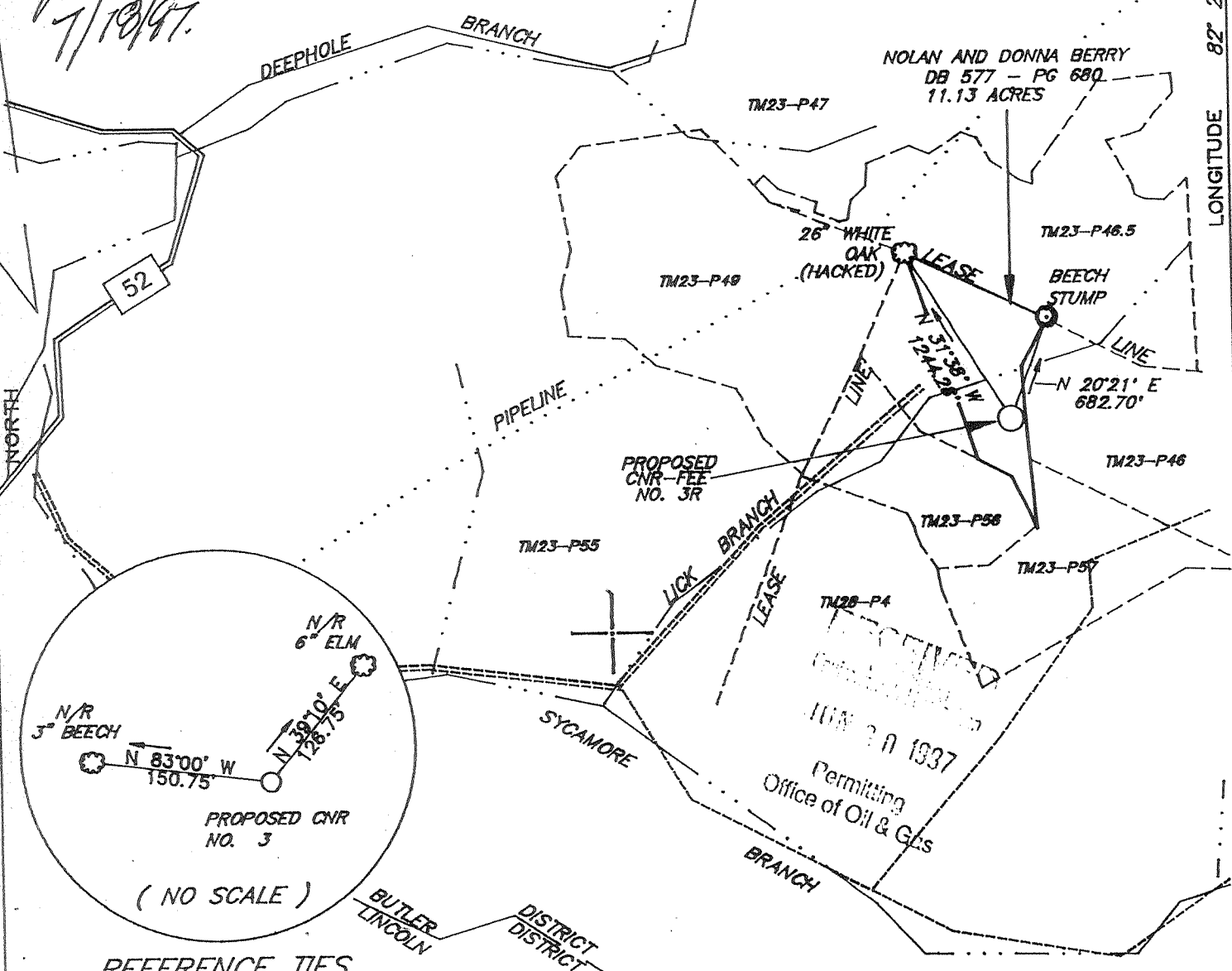
6-6 353

**CNR - FEE
NO. 3R**

*Jamil
7/19/97*

7,900' W
LATITUDE 38° 10' 00"

LONGITUDE 82° 25' 00"

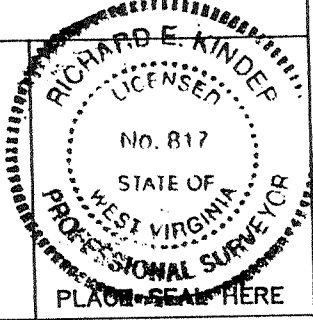


REFERENCE TIES

(+) DENOTES LOCATION OF WELL ON UNITED STATES TOPOGRAPHIC MAPS

FILE NO. 97041
DRAWING NO. 97041P
SCALE 1" = 1000'
MINIMUM DEGREE OF ACCURACY 1:2500
PROVEN SOURCE OF ELEVATION SPOT ELEV. TOP OF KNOB
FL. 1058'

I THE UNDERSIGNED, HEREBY CERTIFY THAT THIS PLAT IS CORRECT TO THE BEST OF MY KNOWLEDGE AND BELIEF AND SHOWS ALL THE INFORMATION REQUIRED BY LAW AND THE REGULATIONS ISSUED AND PRESCRIBED BY THE DEPARTMENT OF ENERGY.
(SIGNED) *Richard E. Kinder*
R.P.E. _____ L.L.S. 817



WEST VIRGINIA
DIVISION OF ENVIRONMENTAL PROTECTION
OFFICE OF OIL AND GAS
#10 McJUNKIN ROAD
NITRO, WEST VIRGINIA 25143-2506



DATE JUNE 6, 1997
OPERATOR'S WELL NO. QBN - 3R
API WELL NO. 47-099-01912
STATE COUNTY PERMIT

WELL TYPE: OIL GAS X LIQUID INJECTION WASTE DISPOSAL
(IF "GAS,") PRODUCTION STORAGE DEEP SHALLOW X
LOCATION: ELEVATION 818' WATERSHED LICK BRANCH OF SYCAMORE BRANCH
DISTRICT BUTLER COUNTY WAYNE
QUADRANGLE WAYNE 7.5'
SURFACE OWNER NOLAN AND DONNA BERRY ACREAGE 11.13 ACRES
OIL & GAS ROYALTY OWNER COLUMBIA NATURAL RESOURCES LEASE ACREAGE 1.385 ACRES
LEASE NO. _____

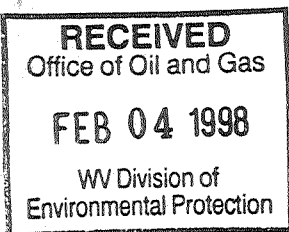
PROPOSED WORK: DRILL X CONVERT DRILL DEEPER REDRILL FRACTURE OR STIMULATE PLUG OFF OLD FORMATION PERFORATE NEW FORMATION OTHER PHYSICAL CHANGE IN WELL (SPECIFY) _____

PLUG AND ABANDON CLEAN OUT AND REPLUG
TARGET FORMATION Big Six ESTIMATED DEPTH 4025'
WELL OPERATOR CABOT OIL & GAS CORP. DESIGNATED AGENT JOHN ARSHIRE
ADDRESS P.O. BOX 1473 CHARLESTON, WV ADDRESS P.O. BOX 454 GLASGOW, WV 25086

DEEP WFL *Wayne &*

FORM WW-6

COUNTY NAME PERMIT



Date: 4-Dec-97
API # 47-099-01912

State of West Virginia
Division of Environmental Protection
Section of Oil and Gas
Well Operator's Report of Well Work

Farm name: Berry, Nolan & Herman Operator Well No.: CNR Fee #3R

LOCATION: Elevation: 818.00 Quadrangle: Wayne
District: Butler County: Wayne
Latitude: 11,300 Feet South of 38 Deg. 10 Min. 0 Sec.
Longitude: 7,900 Feet West of 82 Deg. 25 Min. 0 Sec.

Company: Cabot Oil & Gas Corporation
400 Fairway Drive: Suite 400
Coraopolis, PA 15108-4308

Casing & Tubing Size	Used in Drilling	Left in Well	Cement Fill up Cu. Ft.
16"	40'	40'	
9-5/8"	531'	531'	200 sks Class "A"
7"	1744'	1744'	300 sks Class "A"
2-7/8"	4042'	4042'	80 sks RFC

Agent: John Abshire
 Inspector: David Belcher
 Permit Issued: 6/17/97
 Well Work Commenced: 8/14/97
 Well Work Completed: 9/3/97
 Verbal Plugging
 Permission granted on:
 Rotary Cable Rig
 Total Depth (feet) 4062'
 Fresh Water Depths (ft) 100'
 Salt Water Depths (ft) 965', 999', 1030', 1123', 1187'
 Is coal being mined in area (Y / N)?
 Coal Depths (ft)

OPEN FLOW DATA

Producing formation Big Six Pay zone depth (ft) 3914' - 3926'
 Gas: Initial open flow 146 MCF/d Oil: Initial open flow N/A Bbl/d
 Final open flow 453 MCF/d Final open flow N/A Bbl/d
 Time of open flow between initial and final tests 4 Hours
 Static rock pressure 1200 psig (surface pressure after 14 Hours)

Second producing formation _____ Pay zone depth (ft) _____
 Gas: Initial open flow _____ MCF/d Oil: Initial open flow _____ Bbl/d
 Final open flow _____ MCF/d Final open flow _____ Bbl/d
 Time of open flow between initial and final tests _____ Hours
 Static rock pressure _____ psig (surface pressure after _____ Hours)

NOTE: ON BACK OF THIS FORM PUT THE FOLLOWING: 1). DETAILS OF PERFORATED INTERVALS, FRACTURING OR STIMULATING, PHYSICAL CHANGE, ETC. 2). THE WELL LOG WHICH IS A SYSTEMATIC DETAILED GEOLOGICAL RECORD OF ALL FORMATIONS, INCLUDING COAL ENCOUNTERED BY THE WELLBORE.

For: CABOT OIL & GAS CORPORATION

By: Russ Rudnick, Jr. 9-14-98
Date: 1-22-98

OPEN FLOW DATA

Perf'd Big Six @ 3914'-3926'. Brokedown with 250 gals 15% HCl acid. Breakdown pressure 3571 psi. Treated with 184 bbls gelled acid. ATP; 3404 psi. MTP: 3631 psi. AIR: 3 bpm. ISIP: 3000 psi.

FORMATION	TOP	BOTTOM	REMARKS
Sand/Shale	0	772	
Salt Sand	772	1257	
Little Lime	1257	1321	
Big Lime	1321	1484	
Injun	1484	1591	
Shale	1591	2092	
Berea	2092	2131	
Shale	2131	3216	
Onondaga	3216	3365	
Lockport	3365	3950	
Shale	3950	TD - 4062	

RECEIVED
Division of Environmental Protection

JAN 26 1998

Permitting
Office of Oil & Gas

State of West Virginia
Division of Environmental Protection
Section of Oil and Gas
Well Operator's Report of Well Work

Date: 4-Dec-97
API # 47-099-01912

Farm name: Berry, Nolan & Herman Operator Well No.: CNR Fee #3R

LOCATION: Elevation: 818.00 Quadrangle: Wayne
District: Butler County: Wayne
Latitude: 11,300 Feet South of 38 Deg. 10 Min. 0 Sec.
Longitude: 7,900 Feet West of 82 Deg. 25 Min. 0 Sec.

Company: Cabot Oil & Gas Corporation
400 Fairway Drive: Suite 400
Coraopolis, PA 15108-4308

Agent: John Abshire
Inspector: David Belcher
Permit Issued: 6/17/97
Well Work Commenced: 8/14/97
Well Work Completed: 9/3/97
Verbal Plugging
Permission granted on:
Rotary X Cable Rig
Total Depth (feet) 4062'
Fresh Water Depths (ft) 100'

Salt Water Depths (ft) 965', 999', 1030', 1123',
1187'

Is coal being mined in area (Y / N)?
Coal Depths (ft)

Casing & Tubing Size	Used in Drilling	Left in Well	Cement Fill up Cu. Ft.
16"	40'	40'	
9-5/8"	531'	531'	200 sks Class "A"
7"	1744'	1744'	300 sks Class "A"
2-7/8"	4042'	4042'	80 sks RFC

OPEN FLOW DATA

Producing formation Big Six Pay zone depth (ft) 3914' - 3926'
Gas: Initial open flow 146 MCF/d Oil: Initial open flow N/A Bbl/d
Final open flow 453 MCF/d Final open flow N/A Bbl/d
Time of open flow between initial and final tests 4 Hours
Static rock pressure 1200 psig (surface pressure after 14 Hours

Second producing formation _____ Pay zone depth (ft) _____
Gas: Initial open flow _____ MCF/d Oil: Initial open flow _____ Bbl/d
Final open flow _____ MCF/d Final open flow _____ Bbl/d
Time of open flow between initial and final tests _____ Hours
Static rock pressure _____ psig (surface pressure after _____ Hours

NOTE: ON BACK OF THIS FORM PUT THE FOLLOWING: 1) DETAILS OF PERFORATED INTERVALS, FRACTURING OR STIMULATING, PHYSICAL CHANGE, ETC. 2) THE WELL LOG WHICH IS A SYSTEMATIC DETAILED GEOLOGICAL RECORD OF ALL FORMATIONS, INCLUDING COAL ENCOUNTERED BY THE WELLBORE.

For: CABOT OIL & GAS CORPORATION

By: Ray Prudnick, Jr.
Date: 1-22-98

JAN 30 1998

OPEN FLOW DATA

Perf'd Big Six @ 3914'-3926'. Brokedown with 250 gals 15% HCl acid. Breakdown pressure 3571 psi. Treated with 184 bbls gelled acid. ATP; 3404 psi. MTP: 3631 psi. AIR: 3 bpm. ISIP: 3000 psi.

FORMATION	TOP	BOTTOM	REMARKS
Sand/Shale	0	772	
Salt Sand	772	1257	
Little Lime	1257	1321	
Big Lime	1321	1484	
Injun	1484	1591	
Shale	1591	2092	
Berea	2092	2131	
Shale	2131	3216	
Onondaga	3216	3365	
Lockport	3365	3950	
Shale	3950	TD - 4062	