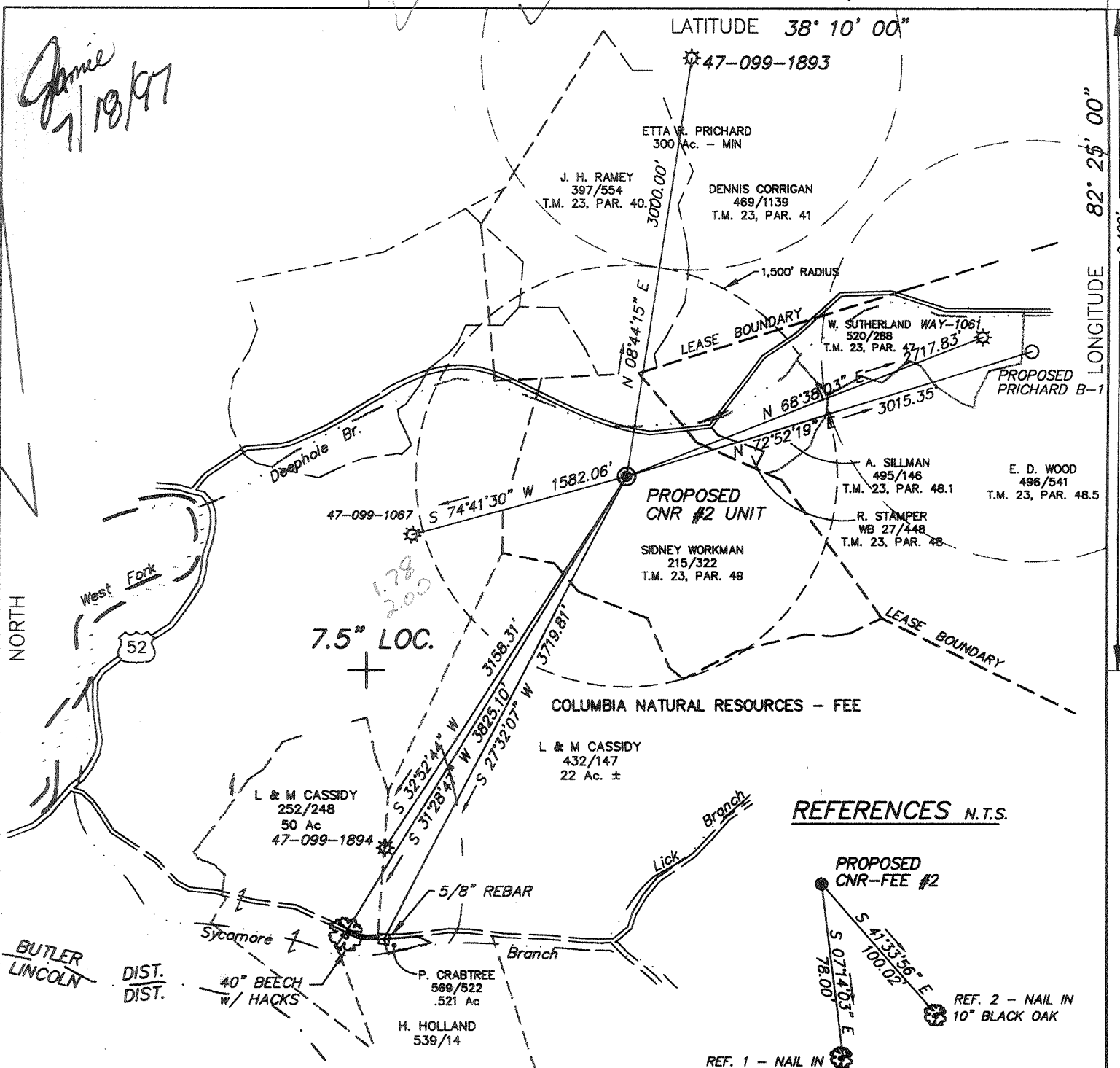
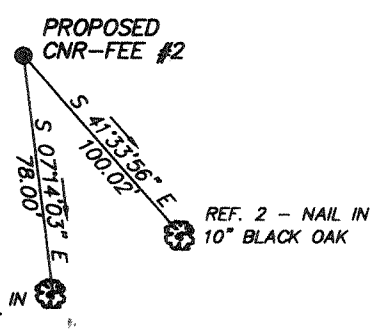


Janice
7/18/97



7.5" LOC.

REFERENCES N.T.S.



(+) DENOTES LOCATION OF WELL ON UNITED STATES TOPOGRAPHIC MAPS

FILE No 8723-525
 DRAWING No. CNR-FEE #2
 SCALE 1" = 1000'
 MINIMUM DEGREE OF ACCURACY 1 : 2500
 PROVEN SOURCE OF ELEVATION SPOT ELEV. ON TOP OF KNOB EL. 1155

I THE UNDERSIGNED, HEREBY CERTIFY THAT THIS PLAT IS CORRECT TO THE BEST OF MY KNOWLEDGE AND BELIEF AND SHOWS ALL THE INFORMATION REQUIRED BY LAW AND THE REGULATIONS ISSUED AND PRESCRIBED BY THE DEPARTMENT OF MINES
 (SIGNED) *William J. Whitman* R.P.S.
 R.P.E. _____ R.P.S. 646



PLACE SEAL HERE

WEST VIRGINIA
 DIVISION OF ENVIRONMENTAL PROTECTION
 OFFICE OF OIL AND GAS
 #10 McJUNKIN ROAD
 NITRO, WEST VIRGINIA 25143-2506
 WELL TYPE: OIL ___ GAS X LIQUID INJECTION ___ WASTE DISPOSAL ___
 (IF "GAS") PRODUCTION X STORAGE ___ DEEP X SHALLOW ___
 LOCATION: ELEVATION 806.01 WATER SHED SYCAMORE BRANCH OF WEST FORK OF TWELVE POLE CREEK
 DISTRICT BUTLER COUNTY WAYNE
 QUADRANGLE WAYNE, W. VA.



DATE DECEMBER 22 19 96
 OPERATOR'S WELL No. CNR-FEE #2
 API WELL No. _____

47 099-01913
 STATE COUNTY PERMIT

SURFACE OWNER SIDNEY WORKMAN ACREAGE 59
 OIL & GAS ROYALTY OWNER CNR LEASE ACREAGE _____

LEASE No. _____
 PROPOSED WORK: DRILL X CONVERT ___ DRILL DEEPER ___ REDRILL ___ FRACTURE OR STIMULATE ___ PLUG OFF OLD FORMATION ___ PERFORATE NEW FORMATION ___ OTHER PHYSICAL CHANGE IN WELL (SPECIFY) _____

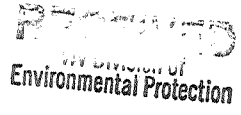
PLUG AND ABANDON 4150 CLEAN OUT AND REPLUG _____ ESTIMATED DEPTH Big Six
 WELL OPERATOR CABOT OIL & GAS CORP. DESIGNATED AGENT DAVID McCLUSKEY
 ADDRESS P.O. BOX 1473 ADDRESS P.O. BOX 1473
CHARLESTON, W. VA. CHARLESTON, W. VA.

JUL 18 1997

DEEP WELL

6-6 353

FORM IV-6 (8-78)



JAN 26 1993

Permitting Office

Date: 4-Dec-97
API # 47-099-01913

State of West Virginia
Division of Environmental Protection
Section of Oil and Gas
Well Operator's Report of Well Work

Farm name: Workman, Joan, et al. Operator Well No.: CNR Fee #2

LOCATION: Elevation: 806.01 Quadrangle: Wayne
District: Butler County: Wayne
Latitude: 9,400 Feet South of 38 Deg. 10 Min. 0 Sec.
Longitude: 10,550 Feet West of 82 Deg. 25 Min. 0 Sec.

Company: Cabot Oil & Gas Corporation
400 Fairway Drive: Suite 400
Coraopolis, PA 15108-4308

Agent: John Abshire
Inspector: David Belcher
Permit Issued: 6/17/97
Well Work Commenced: 8/23/97
Well Work Completed: 9/11/97
Verbal Plugging
Permission granted on:
Rotary X Cable Rig
Total Depth (feet) 4038'
Fresh Water Depths (ft) 220'
Salt Water Depths (ft) 920', 980', 1250'

| Casing & Tubing Size | Used in Drilling | Left in Well | Cement Fill up Cu. Ft. |
|----------------------|------------------|--------------|------------------------|
| 16" | 40' | 40' | |
| 9-5/8" | 531' | 531' | 185 sks Class "A" |
| 7" | 1796' | 1796' | 330 sks Class "A" |
| 2-7/8" | 4002' | 4003' | 100 sks RFC |
| | | | |

Is coal being mined in area (Y / N)?
Coal Depths (ft)

OPEN FLOW DATA

Producing formation Big Six Pay zone depth (ft) 3892' - 3904'
Gas: Initial open flow 207 MCF/d Oil: Initial open flow N/A Bbl/d
Final open flow 516 MCF/d Final open flow N/A Bbl/d
Time of open flow between initial and final tests 4 Hours
Static rock pressure 1100 psig (surface pressure after 15 Hours)

Second producing formation Pay zone depth (ft)
Gas: Initial open flow MCF/d Oil: Initial open flow Bbl/d
Final open flow MCF/d Final open flow Bbl/d
Time of open flow between initial and final tests Hours
Static rock pressure psig (surface pressure after Hours)

NOTE: ON BACK OF THIS FORM PUT THE FOLLOWING: 1). DETAILS OF PERFORATED INTERVALS, FRACTURING OR STIMULATING, PHYSICAL CHANGE, ETC. 2). THE WELL LOG WHICH IS A SYSTEMATIC DETAILED GEOLOGICAL RECORD OF ALL FORMATIONS, INCLUDING COAL ENCOUNTERED BY THE WELLBORE.

For: CABOT OIL & GAS CORPORATION

By: Ray Brudnick, Jr.
Date: 1-22-98

JAN 30 1998

OPEN FLOW DATA

Perf'd Big Six @ 3892'-3904'. Broke down with 250 gals HCl acid. Displaced with 16 bbls fluid @ 3 bpm. Breakdown pressure 3696 psi. ISIP: 2400 psi. Used 28,800 scf N₂ and 286 bbls fluid. ATP: 3250 psi. MTP: 2555 psi. ATR: 3.2 bpm. ISIP: 2925 psi.

| FORMATION | TOP | BOTTOM | REMARKS |
|-------------|------|-----------|---------|
| Sand/Shale | 0 | 721 | |
| Salt Sand | 721 | 1242 | |
| Little Lime | 1242 | 1310 | |
| Big Lime | 1310 | 1467 | |
| Injun | 1467 | 1589 | |
| Shale | 1589 | 2086 | |
| Berea | 2086 | 2210 | |
| Shale | 2210 | 3204 | |
| Onondaga | 3204 | 3330 | |
| Lockport | 3330 | 3892 | |
| Shale | 3892 | 4038 - TD | |