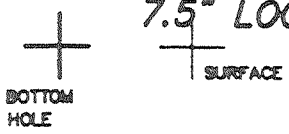
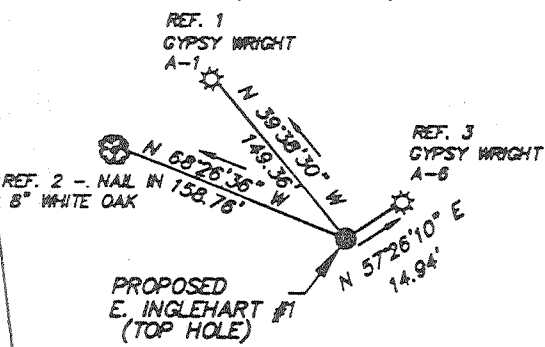


**REFERENCES N.T.S.**  
(TOP OF HOLE)

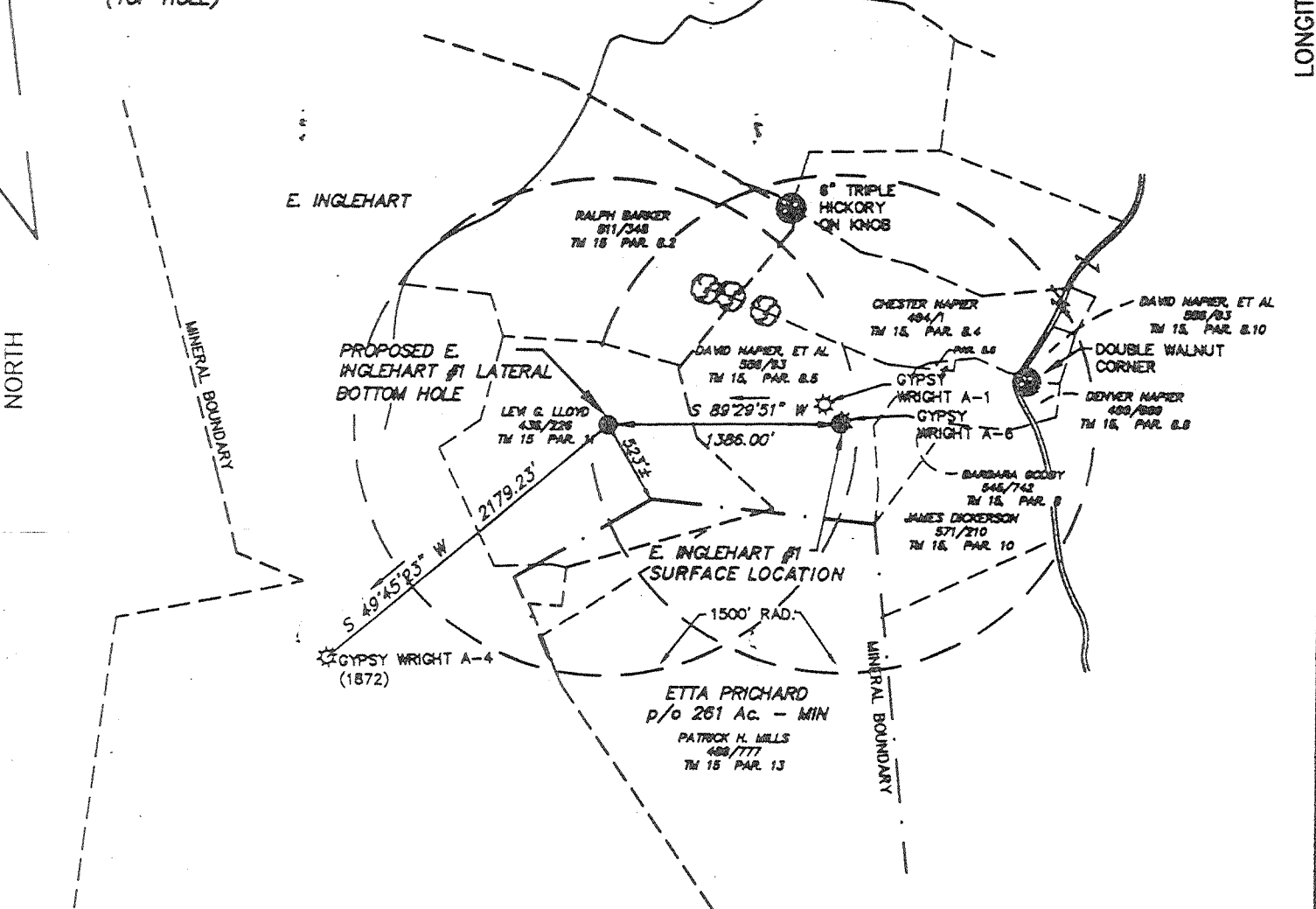
LATITUDE 38° 10' 00"

7.5" LOC.

LONGITUDE 82° 25' 00"



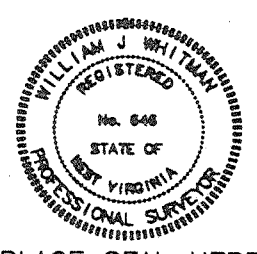
0.19  
1.57



(+) DENOTES LOCATION OF WELL ON UNITED STATES TOPOGRAPHIC MAPS

FILE No 8723-625  
DRAWING No. E. INGLEHART #1L  
SCALE 1" = 1000'  
MINIMUM DEGREE OF ACCURACY 1 : 2500  
PROVEN SOURCE OF ELEVATION SPOT ELEV. 1155 ON TOP OF KNOB

I THE UNDERSIGNED, HEREBY CERTIFY THAT THIS PLAT IS CORRECT TO THE BEST OF MY KNOWLEDGE AND BELIEF AND SHOWS ALL THE INFORMATION REQUIRED BY LAW AND THE REGULATIONS ISSUED AND PRESCRIBED BY THE DIVISION OF ENVIRONMENTAL PROTECTION.  
(SIGNED) William J. Whitman  
R.P.E. \_\_\_\_\_ R.P.S. 646



PLACE SEAL HERE

STATE OF WEST VIRGINIA  
DIVISION OF ENVIRONMENTAL PROTECTION  
OFFICE OF OIL AND GAS  
NITRO, WV

DATE APRIL 29 19 98  
OPERATOR'S WELL No. E. INGLEHART #1  
API WELL No. \_\_\_\_\_ LATERAL \_\_\_\_\_

WELL TYPE: OIL \_\_\_ GAS X LIQUID INJECTION \_\_\_ WASTE DISPOSAL \_\_\_  
(IF "GAS") PRODUCTION \_\_\_ STORAGE X DEEP \_\_\_ SHALLOW \_\_\_  
STATE 47 COUNTY 099 PERMIT 01905

LOCATION: ELEVATION 806.60 WATER SHED TWO MILE CREEK  
DISTRICT STONEWALL COUNTY WAYNE  
QUADRANGLE WAYNE, W. VA.

SURFACE OWNER DAVID NAPIER, ET AL ACREAGE \_\_\_\_\_  
OIL & GAS ROYALTY OWNER GYPSY WRIGHT LEASE ACREAGE \_\_\_\_\_  
LEASE No. \_\_\_\_\_

PROPOSED WORK: DRILL X CONVERT \_\_\_ DRILL DEEPER \_\_\_ REDRILL \_\_\_ FRACTURE OR STIMULATE \_\_\_ PLUG OFF OLD FORMATION \_\_\_ PERFORATE NEW FORMATION \_\_\_ OTHER PHYSICAL CHANGE IN WELL (SPECIFY) \_\_\_\_\_

PLUG AND ABANDON \_\_\_ CLEAN OUT AND REPLUG \_\_\_\_\_  
TARGET FORMATION \_\_\_\_\_ ESTIMATED DEPTH 6-6 353

WELL OPERATOR CABOT OIL & GAS CORP. DESIGNATED AGENT JOHN ABSHIRE  
ADDRESS P.O. BOX 454 ADDRESS P.O. BOX 454  
GLASGOW, W. VA. 25086 GLASGOW, W. VA. 25086

**DEEP WELL**

MAY 1905

WR-35

Date: 21-Jan-99  
API # 47-099-01965

State of West Virginia  
Division of Environmental Protection  
Section of Oil and Gas  
Well Operator's Report of Well Work

*Directional well*

Farm name: Napier, Mark & Napier, C. Operator Well No.: Inglehart #1

LOCATION: Elevation: 806' Quadrangle: Wayne  
District: Stonewall County: Wayne  
Latitude: 1,000 feet South of 38 DEG. 10 MIN. 0 SEC.  
Longitude: 8,300 feet West of 82 DEG. 25 MIN. 0 SEC.

Company: Cabot Oil & Gas Corporation  
400 Fairway Drive: Suite 400  
Coraopolis, PA 15108-4308

Agent: John Abshire  
Inspector: David Belcher  
Permit Issued: 11/16/98  
Well Work Commenced: 12/2/98  
Well Work Completed: 1/3/99  
Verbal Plugging \_\_\_\_\_  
Permission granted on: \_\_\_\_\_  
Rotary X Cable \_\_\_\_\_  
Total Depth (feet) 3904' TVD, 5152' MD  
Fresh Water Depths (ft) 51'  
Salt Water Depths (ft) 850', 950'

Casing & Tubing Size	Used in Drilling	Left in Well	Cement Fill up Cu. Ft.
22"	26'	26'	
16"	530.95'	530.95'	550 sks Class "A"
13-3/8"	1335.90'	1335.90'	375 sks Class "A"
9-5/8"	3254'	3254'	170 sks latex

Is coal being mined in area (Y / N)? \_\_\_\_\_  
Coal Depths (ft) 223'-226', 427'-433'

Office of Oil & Gas Permitting  
JAN 27 1999  
W.V. Division of Environmental Protection

OPEN FLOW DATA

Producing formation Big Six Pay zone depth (ft) See note on 2<sup>nd</sup> page  
Gas: Initial open flow 130 MCF/d Oil: Initial open flow N/A Bbl/d  
Final open flow 775 MCF/d Final open flow N/A Bbl/d  
Time of open flow between initial and final tests 80 Hours  
Static rock pressure 800 psig (surface pressure after 72 Hours)

Second producing formation \_\_\_\_\_ Pay zone depth (ft) \_\_\_\_\_  
Gas: Initial open flow \_\_\_\_\_ MCF/d Oil: Initial open flow \_\_\_\_\_ Bbl/d  
Final open flow \_\_\_\_\_ MCF/d Final open flow \_\_\_\_\_ Bbl/d  
Time of open flow between initial and final tests \_\_\_\_\_ Hours  
Static rock pressure \_\_\_\_\_ psig (surface pressure after \_\_\_\_\_ Hours)

NOTE: ON BACK OF THIS FORM PUT THE FOLLOWING: 1). DETAILS OF PERFORATED INTERVALS, FRACTURING OR STIMULATING, PHYSICAL CHANGE, ETC. 2). THE WELL LOG WHICH IS A SYSTEMATIC DETAILED GEOLOGICAL RECORD OF ALL FORMATIONS, INCLUDING COAL ENCOUNTERED BY THE WELLBORE.

For: CABOT OIL & GAS CORPORATION  
By: Ray Prudnick, Jr.  
Date: 1-21-99

WAY 1965

## OPEN FLOW DATA

The top of the Big Six formation was encountered at a true vertical depth of 3840'. Drilling became horizontal in the Big Six at 3900' TVD and 4252' MD. The Big Six was then drilled horizontally for 900' to a measured depth of 5152' with the horizontal section fluctuating between 3900' and 3904' TVD. When first encountered, the Big Six initial flow was 130 mcf. It continued to increase during drilling until the final flow of 775 mcf was recorded at 5152' (MD). The well was put into line without stimulation.

FORMATION	TOP	BOTTOM	REMARKS
Sand/Shale	0	223	
Coal	223	226	
Sand/Shale	226	427	
Coal	427	433	
Sand/Shale	433	820	
Salt Sand	820	1180	
Shale	1180	1240	
Little Lime	1240	1280	
Big Lime	1290	1440	
MacCraday	1440	1530	
Big Injun	1530	1560	
Shale	1560	2020	
Sunbury Shale	2020	2060	
Berea	2060	2180	
Shale	2180	3200	
Corniferous Lime	3200	3840	
Big Six	3840 - TVD	3904 - TVD	