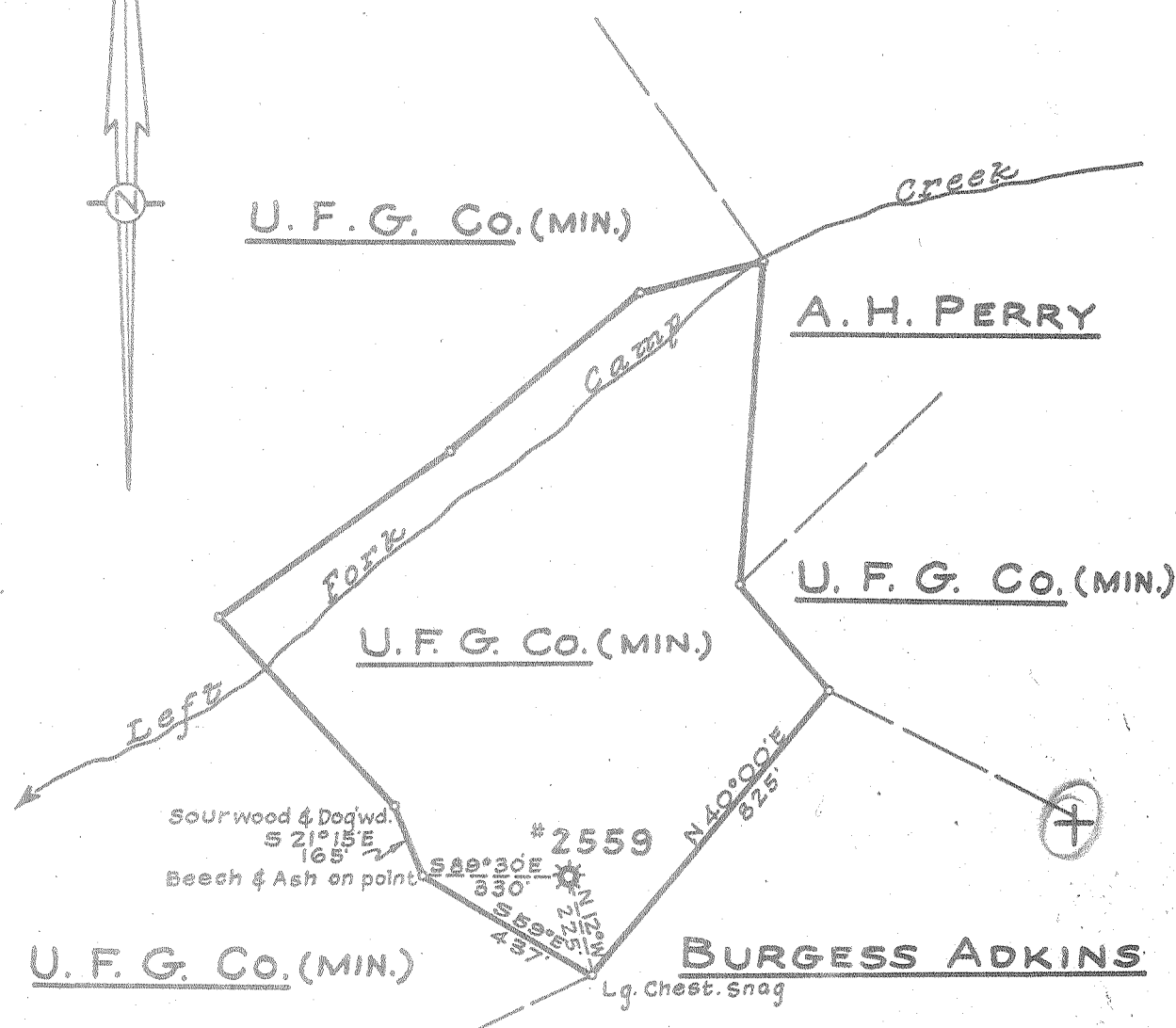
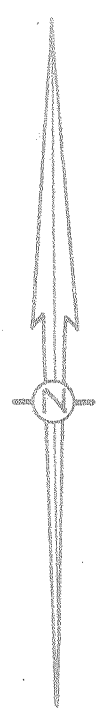


38 12 30

Latitude 38° 15'

Longitude 82° 20'



Sourwood & Dogwd.  
S 21° 15' E  
165'  
Beech & Ash on point

# 2559

BURGESS ADKINS  
Lg. Chest. snag

+ 7.5 2.81  
101

0.98 W  
5.8 2

New Location   
Drill Deeper   
Abandonment

APR 23 1956

Company	UNITED FUEL GAS Co.
Address	CHARLESTON, W. VA.
Farm	U. F. G. Co. MIN. TR. #1
Tract	Acres 16,920.76 Lease No. 24689
Well (Farm) No.	Serial No. 2559
Elevation (Spirit Level)	864.00
Quadrangle	WAYNE
County	WAYNE District STONEWALL
Engineer	Paul E. ...
Engineer's Registration No.	669
File No.	22-45 Drawing No.
Date	3-28-56 Scale 1" = 400'

STATE OF WEST VIRGINIA  
DEPARTMENT OF MINES  
OIL AND GAS DIVISION  
CHARLESTON

WELL LOCATION MAP  
FILE NO. WAY-27-A

+ Denotes location of well on United States Topographic Maps, scale 1 to 62,500, latitude and longitude lines being represented by border lines as shown.

- Denotes one inch spaces on border line of original tracing.