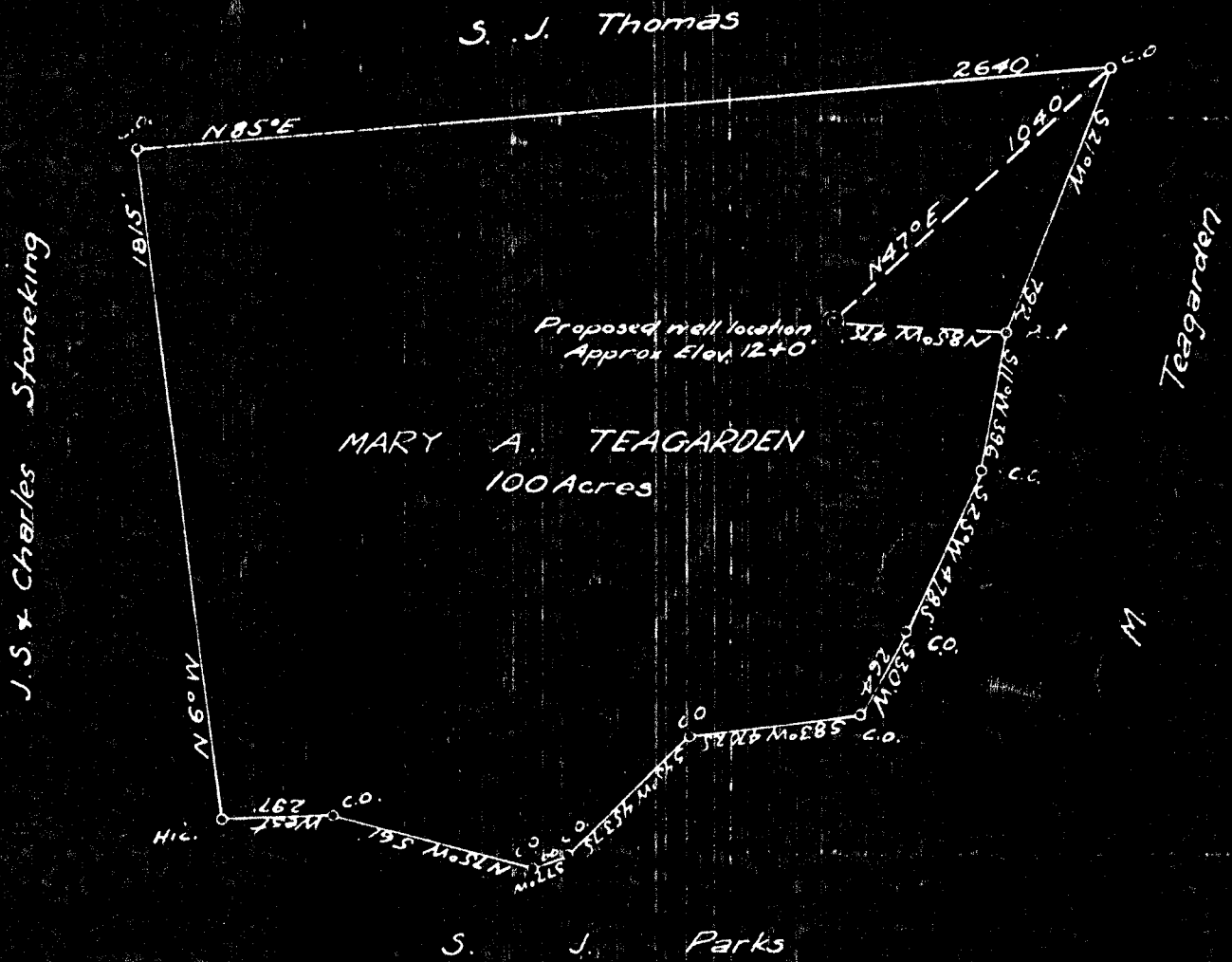


PLAT OF THE PROPOSED LOCATION OF WELL NO. 3422 OF
 THE MANUFACTURERS LIGHT & HEAT CO. OF PITTSBURGH, PA.
 ON THE MARYA. TEAGARDEN FARM CONSISTING OF 100 ACRES
 LOCATED IN CHURCH DISTRICT, WETZEL COUNTY, W. VA.

Coal not operated
 Coal owned by John Hatfield
 W. W. Keener



ENGINEERS CERTIFICATE

I, THE UNDERSIGNED, HEREBY CERTIFY THAT THIS MAP IS CORRECT AND SHOWS
 ALL THE INFORMATION, TO THE BEST OF MY KNOWLEDGE AND BELIEF REQUIRED
 BY THE OIL AND GAS SECTION OF THE MINING LAWS OF WEST VIRGINIA

Donald K. Bell
 ENGINEER

A. KNOWNED BEFORE ME, A NOTARY PUBLIC OF AND FOR
 ALLECHENY COUNTY, STATE OF PENNSYLVANIA THIS 19 DAY OF Feb 1920

Harry H. Jones

LATITUDE

39.40

39.40

LONGITUDE

0.1 Kilo
100

7'5 OGIS topo location

7.5' loc 2500
0.750

15' loc 2500
(calc.) 2.100

Company _____

Farm _____

Quad Littleton 415' E

County _____

District Church

WELL LOCATION MAP

File No. W1025

Church District, Wetzel County, W. Va.

By The Manufacturers Light & Heat Co., 800 Union Trust Bldg.,
Pittsburgh, Pa.

On 60 acres, surface owned by W.S. Stoneking, Glover Gap, W. Va.,
and minerals by The Manufacturers Light & Heat Co., 800 Union
Trust Bldg., Pittsburgh, Pa.

Drilled under permit Wet-25, issued March 10, 1930.

Elevation, 1240' N.

16" conductor, 14'; 10" casing, 325'; 8 1/4", 1454' 7"; 6 3/8", 2228' 1".

No packer. No liners used.

Coal was encountered at 600-605, 855-860, and 960-966'.

Completion reported to Dept. of Mines June 12, 1930.

Well was not shot. Producing hole (gas?).

Record to ROT from Mrs. Griffith Aug. 30, 1938.

	Top.	Bottom.	Thickness.
Clay, yellow, soft	0	14	14
Red rock, soft (water at 35')	14	64	50
Slate, black, soft	64	164	100
Lime, white, hard	164	200	36
Slate, black, soft	200	275	75
Red rock, soft	275	325	50
Slate, black, soft	325	450	125
Lime, white, hard	450	500	50
Slate, black, soft	500	570	70
Bluff Sand, white, hard	570	600	30
Fairview (Waynesburg) Coal, black, soft	600	605	5
Sand, white, hard	605	706	101
Slate, black, soft	706	716	10
Lime, white, hard	716	855	139
Kopletown (Sewickley) Coal, black, soft	855	860	5
Limestone, white, hard	860	940	80
Slate, dark, soft	940	960	20
Pittsburgh Coal, black, soft	960	966	6
Limestone, white, hard	966	1000	34
Red rock, soft	1000	1015	15
Limestone, white, hard	1015	1118	103
Red rock, soft	1118	1125	7
Lime, white, hard	1125	1132	7
Red....., soft	1132	1175	43
Slate and shells, dark, hard and soft	1175	1220	45
Red rock, soft	1220	1270	50
Lime, white, hard	1270	1300	30
Slate, black, soft	1300	1330	30
Red rock, soft	1330	1354	24
Little Dunkard Sand, white, hard	1354	1405	51
Slate, dark, soft	1405	1470	65
Big Dunkard Sand, white, hard	1470	1495	25
Slate, black, soft	1495	1505	10
Limestone, white, hard	1505	1615	110
Cas Sand, white, hard	1615	1645	30
Slate, dark, hard soft	1645	1650	5
Sand, white, hard	1650	1680	30
Slate, black, soft	1680	1720	40
1st Salt Sand, dark, hard and soft	1720	1745	25
Slate, black, soft	1745	1777	32
2nd Salt Sand, dark, hard	1777	1825	48
Slate, dark, soft	1825	1875	50

(OVER)

	Top.	Bottom.	Thickness.
Slate and shells, dark, hard and soft	1875	- 1950	75
3rd Salt Sand, white, hard	1950	- 1990	40
Slate, black, soft	1990	- 2028	38
Sand, white, hard	2028	- 2075	47
Red rock, soft	2075	- 2095	20
Limestone, white, hard	2095	- 2115	20
Slate, dark, soft	2115	- 2120	5
Little Lime, white, hard	2120	- 2138	18
Pencil Cove, dark, soft	2138	- 2157	19
Big Lime, white, hard	2157	- 2222	65
Big Injun Sand, white, hard (gas at 2307-10')	2222	- 2455	233
Slate, dark, soft	2455	- 2500	45
Lime, white, hard	2500	- 2525	25
Slate, dark, soft	2525	- 2540	15
Limestone, white, hard	2540	- 2570	30
Slate, dark, soft	2570	- 2750	180
Limestone, white, hard	2750	- 2795	45
Slate, dark, soft	2795	- 2805	10
Limestone, white, hard	2805	- 2850	45
Slate and shells, dark, hard and soft	2850	- 2935	85
30-Ft. Sand, white, hard	2935	- 2960	25
Slate, dark, soft	2960	- 2990	30
Slate and shells, dark, hard and soft	2990	- 3028	38
Pink rock, soft	3028	- 3029	1
Gordon Stray Sand, white, hard (gas at 3045')	3029	- 3055	26
Slate, dark, soft	3055	- 3062	7
Gordon Sand, white, hard	3062	- 3067	5
Slate, dark, soft	3067	- 3085	18
4th Sand, white, hard	3085	- 3127	42
Slate, dark, soft	3127	- 3143	16
Sand, white, hard (oil and gas at 3142-3145')	3143	- 3145	2 (5?)
Slate, white, soft	3145	- 3162	17
5th Sand, white, hard	3162	- 3168	6
Slate, white, soft	3168	- 3222	54
Total depth		3222	