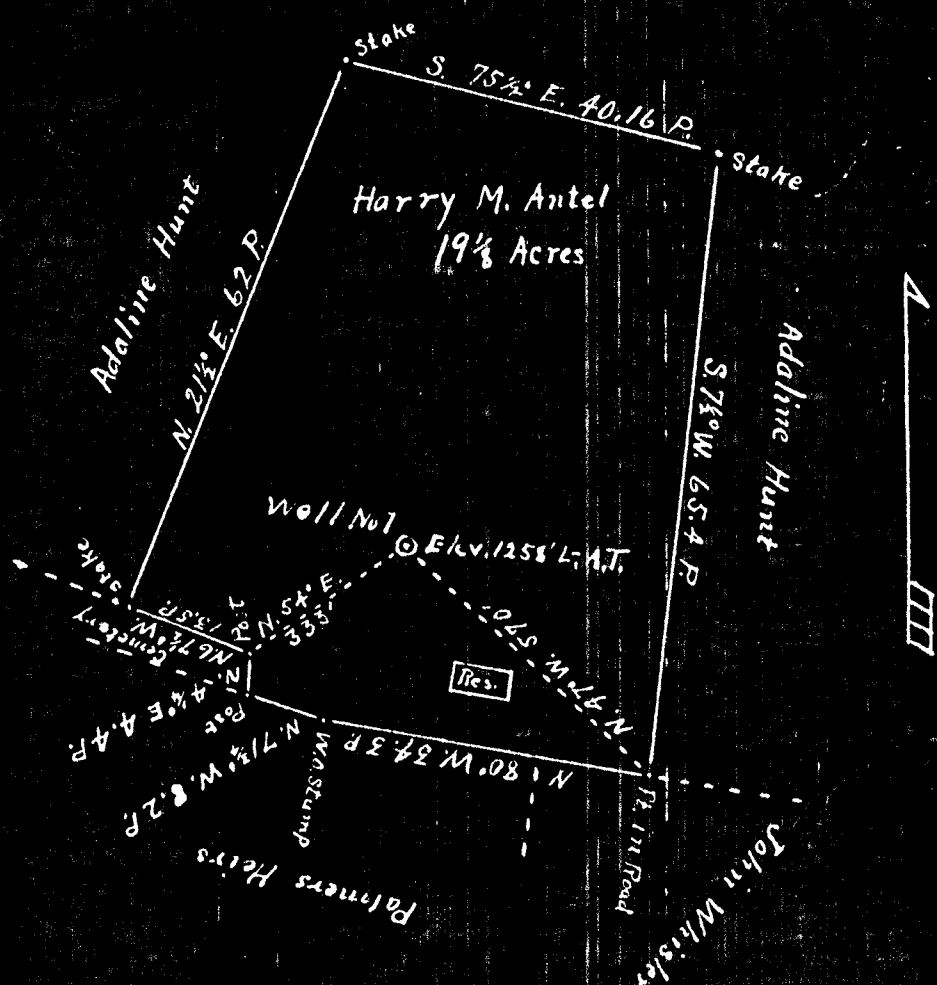




Plat of the Proposed Location of Well No. 1 of Cochran & Cochran of Parkersburg, West Virginia, on the Harry M. Antel Farm consisting of 19-1/8 Acres, Located in Church District, Wetzel County, West Virginia.



I, the undersigned, hereby certify that this map is correct and shows all the information, to the best of my knowledge and belief, required by the oil and gas section of the mining Laws of West Va.

J. N. Robinson  
Engineer

Acknowledged before me a Notary Public of Wetzel County, West Virginia, this 24 day of April, 1930.

My Commission expires Jan 14, 1940

Shum A. Hunt  
Notary Public..

Church District, Wetzel County, W. Va.  
 By Cochran & Cochran, Parkersburg, W. Va.  
 On 19-1/8 acres, located 2 miles south of Burton.  
 Surface owned by Harry M. Antill, Burton, W. Va.  
 Drilled under permit Wet-26, issued April 30, 1930.  
 Elevation, 1258' L.  
 13" conductor, 15'; 10" casing, 252'; 8 1/2", 1450'; 6 3/8", 2226'.  
 No packer. Casing not perforated. No liners used.  
 Coal was encountered at 715-720, 980-986, and 1075-1081'.  
 Completion reported to Dept. of Mines Aug. 20, 1930.  
 Well completed July 4, 1930.  
 Fresh water at 110'. Dry hole.  
 Record to RGT from Mrs. Griffith Aug. 30, 1938.

	Top.	Bottom.	Thickness.
Stone, blue, hard	5	30	25
Clay, yellow, soft	(30?) 35	95	60?
Stone, blue, hard (water, 110')	95	130	35
Slate, black, soft	130	250	120
Rock, white, hard	250	300	50
Red rock, soft	300	330	30
Slate, black, soft	330	600	270
Lime, gray, hard	600	650	50
Slate, black, soft	650	680	30
Sand, gray, hard	680	715	35
Waynesburg Coal, black, soft	715	720	5
Lime, blue, hard	720	800	80
Slate, black, soft	800	850	50
Lime, blue, hard	850	980	130
Manletown (Sewickley) Coal, black, soft	980	986	6
Lime, blue, hard	990	1075	85
Pittsburgh Coal, black, soft	1075	1081	6
Slate, black, soft	1081	1404	304
Sand, gray, hard	1404	1510	66
Big Dunkard Sand, gray, hard	1545	1730	185
Gas Sand, gray, hard	1760	1835	75
Salt Sand, white, broken	1860	1890	30
Sand shells, broken	1890	2100	110
Red rock, soft	2100	2213	113
Little Lime, blue, hard	2213	2268	55
Big Lime, blue, hard	2268	2330	62
Big Injun Sand, yellow, soft	2330	2582	252
Sand, gray, hard	3050	3100	50
Sand, dark, hard	3105	3130	25
Red rock, soft	3135	3145	10
Stray Sand, white, hard	3145	3170	25
Gordon Sand, gray, hard	3185	3235	50
Fourth Sand, dark, hard	3238	3258	20
Fifth Sand, white, hard	3290	3301	11
Sand, dark, hard	3330	3345	15
Sand, dark, soft	3460	3470	10
Slate, black, soft	3470	3500	30
Total depth		3500	