

LATITUDE

39 42 30

0 → 0615
75' 10"

80 47 30

LONGITUDE

7'5 OGIS topo location

7.5' loc 0.615
0.39W

15' loc 3.495
(calc.) 2.61W

Company _____

Farm _____

Quad New Martinsville + 15' ng

County _____

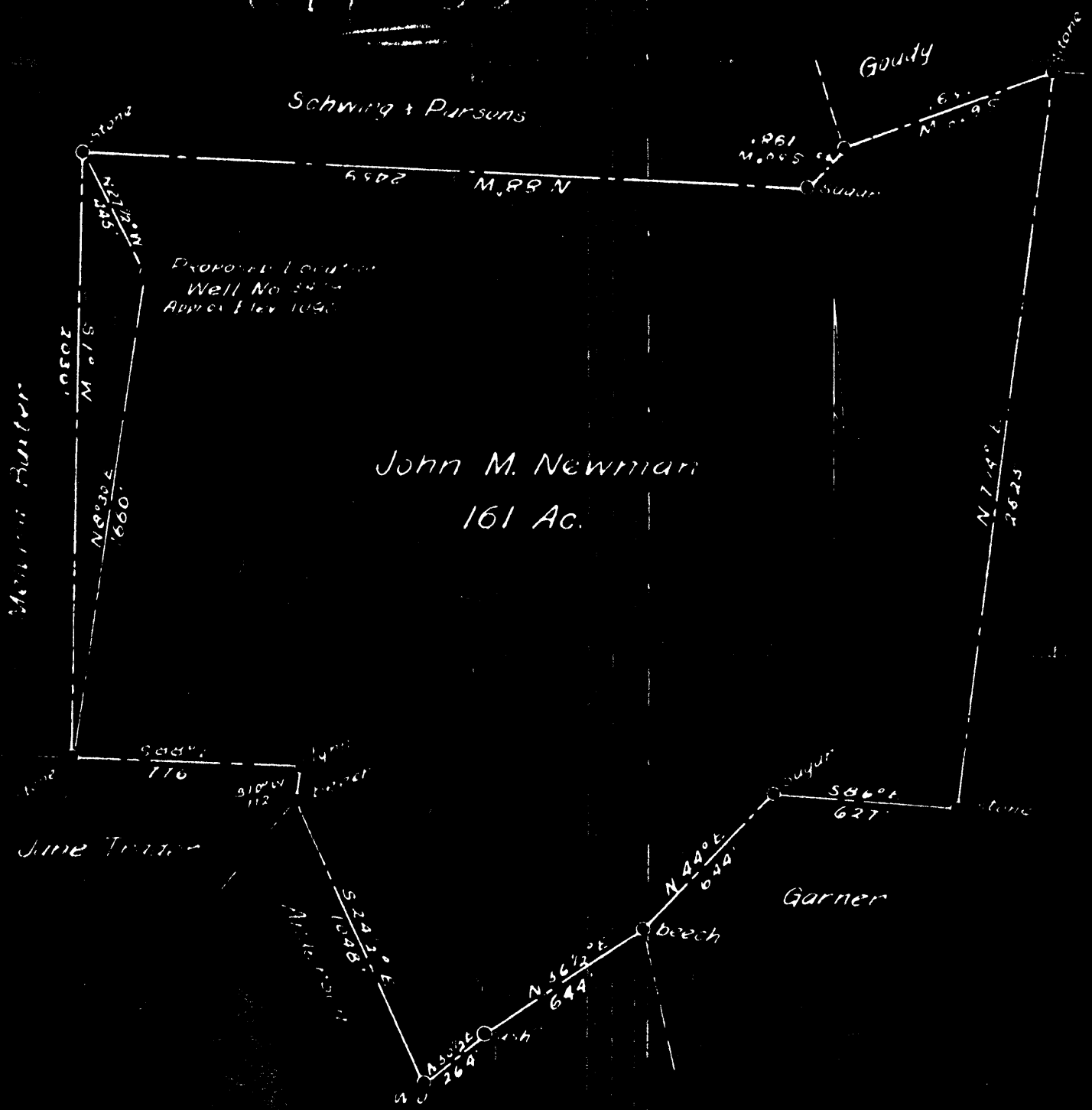
District Proctor

WELL LOCATION MAP

File No. Well 53

PLAT OF THE PROPOSED LOCATION OF WELL NO 3479
 THE MANUFACTURERS LIGHT & HEAT CO. OF PITTSBURGH, PA.
 ON THE JOHN M NEWMAN FARM CONSISTING OF 161 ACRES
 LOCATED IN PROCTOR DISTRICT, WETZEL COUNTY, W. VA.

WTT-53



John M. Newman
 161 Ac.

ENGINEER'S CERTIFICATE

I, THE UNDERSIGNED, HEREBY CERTIFY THAT THIS MAP IS CORRECT AND SHOWS ALL THE INFORMATION TO THE BEST OF MY KNOWLEDGE AND BELIEF REQUIRED BY THE OIL AND GAS ACT AND THE MINING LAWS OF WEST VIRGINIA.

John A. Lawson
 ENGINEER

ACKNOWLEDGED BEFORE ME A NOTARY PUBLIC OF AND FOR ALLEGANY COUNTY STATE OF PENNSYLVANIA THIS 13th DAY OF January 1931

Harry J. [Signature]

Proctor District, Wetzel County, W. Va.

By M. L. & H. Co.

Permit No. Wet-53, Feb. 2, 1931.

Elevation, 1890'.

Casing: 16" - 13" conductor; 10", 972' 1"; 8 1/2", 1287'; 6-5/8", 1774' 1".

Completion reported July 30, 1931.

	Top.	Bottom.
Slate and shells, blue, soft	0	340
✓ Native coal, black, soft	340	342
Slate and shells, gray, soft and hard	342	600
Lime, dark, hard	600	666
✓ Mapletown Coal, black, soft	666	670
Lime, gray, hard	670	760
✓ Pittsburgh Coal, black, soft	760	766
Lime, gray, hard	766	805
Red rock, red, soft	805	960
Slate and lime, gray, soft, and hard	960	990
Sandy lime, white, hard	990	1060
Red rock, red, soft	1060	1070
Lime, gray, hard	1070	1126
Slate, dark, soft	1126	1146
Red rock, red, soft	1146	1166
✓ Little Dunkard, white, hard	1166	1195
Slate, dark, soft	1195	1293
✓ Big Dunkard, white, hard	1293	1300
Broken formation	1300	1315
✓ Gas Sand (Upper), white, hard	1315	1355
Slate, gray, soft	1355	1420
✓ 1st Salt Sand (Lower Gas), white, soft	1420	1480
Slate, dark, soft	1480	1490
✓ 2nd Salt Sand (Lower Gas), white, soft (show of gas, 1505') (hole full of water at 1505')	1490	1527
Slate and shells, gray, soft, and hard	1527	1600
Slate, black, soft	1600	1670
✓ 3rd Salt Sand, blue, hard	1670	1762
Slate, dark, soft	1762	1788
✓ Maxton Sand, white, hard and soft Salt (gas, 1793-1800')	1788	1811
Slate, black, soft	1811	1822
✓ Little Lime, gray, hard	1822	1832
✓ Pencil Cave, black	1832	1834
✓ Big Lime, white, hard	1834	1880
✓ Big Injun, white, hard (gas, 2000'; water, 2000')	1880	2147
Slate, gray, soft	2147	2390
✓ Berea Grit (Weir) Sand, blue, hard	2390	2395
Slate, black, soft	2395	2560
Red rock, red, soft	2560	2620
Slate, dark, soft	2620	2730
✓ Gordon Stray, gray, hard	2730	2736
Slate, dark, soft	2736	2742
✓ Gordon Sand, gray, hard (gas, 2744')	2742	2768
Slate, dark, soft	2768	2850
Red rock, red, soft	2850	2865
Slate, dark, soft	2865	2875
✓ Sand (5th), gray, hard	2875	2890
Slate and shells, gray, soft and hard	2890	3218
✓ Sand (Elizabeth), blue, hard	3218	3263
Slate, gray, soft, to bottom		