

R.C. Tucker's
Loc
+
1.10
0.500

yes + ?
Kla 9/1/71
Prob wrong
Loc.

CERTIFICATE

- NEW LOCATION
- RECONDITION
- DRILL DEEPER
- ABANDONMENT

"I, the undersigned, hereby certify that this map is correct to the best of my knowledge and belief and shows all the information required by paragraph 6 of the rules and regulations of the oil and gas section of the mining laws of West Virginia."
Minimum degree of accuracy is one part in 200

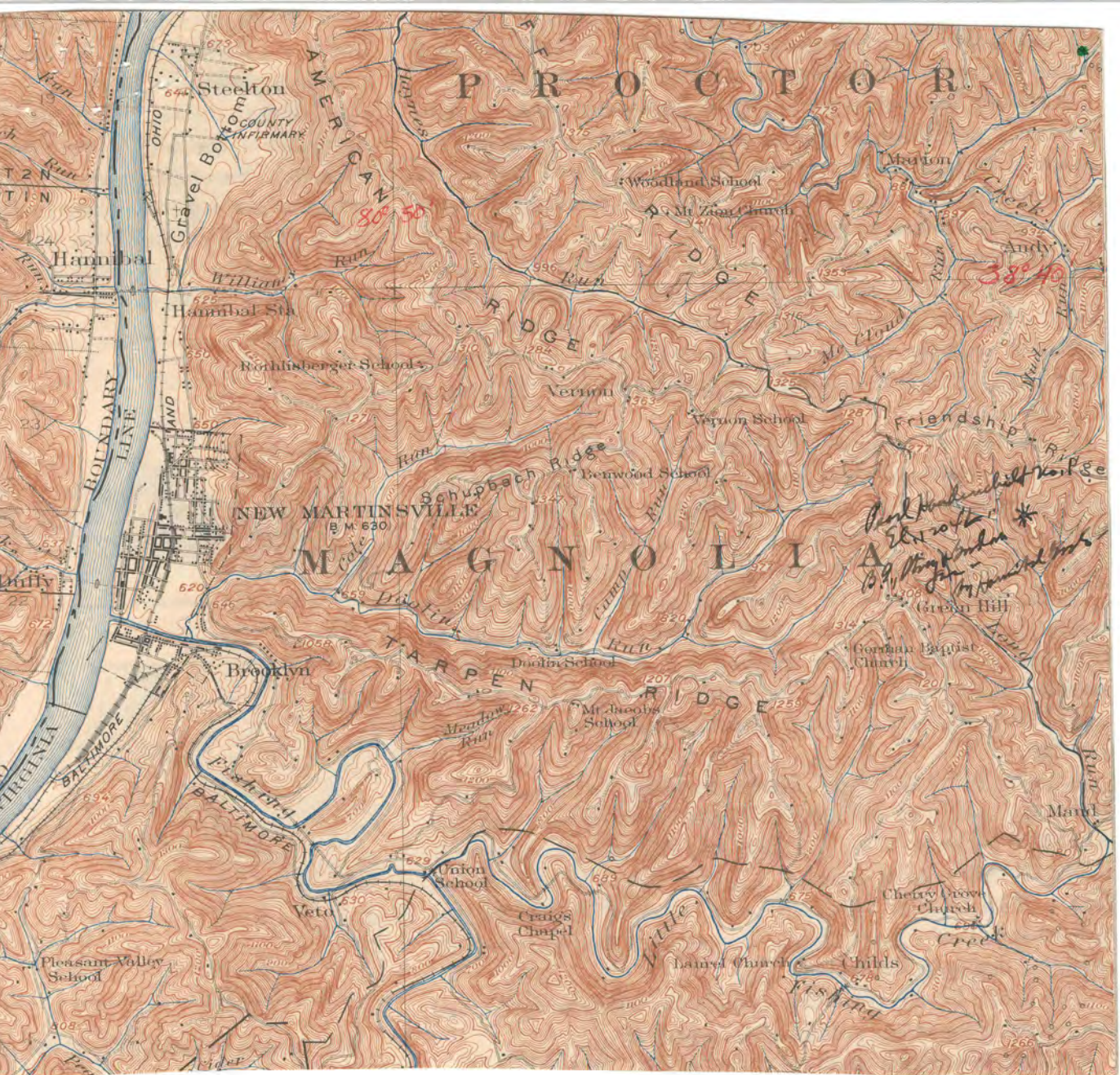
Signed Donald J. Day L.H. 5-247

issued 8-31-71

COMPANY	CITIES SERVICE OIL COMPANY		
ADDRESS	BOX 873 CHARLESTON, W.VA.		
FARM	W.P. HAUDENSCHILT		
MAP	ACRES	LEASE NO	WV-199
WELL (FARM) NO.	A-1	SERIAL NO	GW-332
ELEVATION (SPIRIT LEVEL)	1204.00		
QUADRANGLE	NEW MARTINSVILLE - G SE EC?		
COUNTY	WETZEL	DISTRICT	Proctor Greene
POINT OF PROVEN ELEVATION	USGS 1304 STANDARD DISC.		
FILE NO	DRAWING NO W-9-71		
DATE	AUGUST 27, 1971 SCALE 1" = 500'		

STATE OF WEST VIRGINIA
DEPARTMENT OF MINES
OIL AND GAS DIVISION
CHARLESTON
WELL LOCATION MAP
FILE NO. **WET-86-P**

+ DENOTES LOCATION OF WELL ON UNITED STATES TOPOGRAPHIC MAPS SCALE 1 TO 62 500 LATITUDE AND LONGITUDE LINES BEING REPRESENTED BY BORDER LINES AS SHOWN
DENOTES ONE INCH SPACES ON BORDER LINE OF ORIGINAL TRACING



Steelton

PROCTOR

Gravel Bottom

Hamibal

Hamibal Sta

Rothlisberger Schools

NEW MARTINSVILLE

MAGNOLIA

Brooklyn

Doctr School

Mr Jacobs School

Union School

Craig Chapel

Pleasant Valley School

Laurel Church

Cherry Grove Church

Childs

*Dark head hill top & E. side of it 1891, thing under * on summit of Green Hill*

80° 50'

38° 40'

LATITUDE

39 40

SH 08

LONGITUDE

→ K1a loc
4/30/91

7'5 OGIS topo location

7.5' loc 1.47S
0.49W

15' loc 1.47S
(calc.) 0.49W

Company _____

Farm _____

Quad Newmartinsville

County _____

District Proctor

WELL LOCATION MAP

File No. Wet. 86

Proctor District, Wetzel County, W. Va.
 By Hannibal Gas Co., Ray V. Neamen, Secy., Box 675, Morgantown, W. Va.
 On 146.75 acres, located 1 mi. N. E. of Green Hill P. O.
 Surface owned by W. P. Haudenschilt, Doolin Route, New Martinsville,
 W. Va., and minerals by J. W. Closser, Waynesburg, Pa., J. W.
 Hawkins, Waynesburg, Pa., Harrison Vail, Upper Middletown, Pa.,
 and Elizabeth Vail Dun, Upper Middletown, Pa.
 Drilled under permit Net-86, issued Oct. 6, 1934.
 Elevation, 1204' L.
 10" casing, 333' 11"; 8 1/2", 1437'; expect to set a string of 6" casing in Big Lime at around 2050'.
 Coal was encountered at 350-352, 475-480' (Washington), 832-834' (Sewickley), and 933-935' (Pittsburgh).
 Well still drilling at 1610'.
 Preliminary data sheet to Dept. of Mines Nov. 16, 1934.
 Started drilling Oct. 12, 1934, and completed Dec. 5, 1934.
 Gasser in Big Injun, Gordon Stray, and Gordon Sands.
 Fresh water and only water encountered was at depth of 170-190'.
 Gas: gas show at 1539'; gas at 2115-2134'; gas at 2891-2893'; and gas at 2940-2941'.
 Rock pressure of Big Injun gas, 650 lbs.; rock pressure of Gordon Stray and Gordon gas, 1050 lbs. to sq. in.
 Completion data sheet filed with Dept. of Mines Jan. 11, 1935 (not dated).
 Record to RCT from Mrs. Griffith Sept. 2, 1938.

	Top.	Bottom.
Soil and shale	0	10
Slate and shale	10	160
Lime shells	160	170
(water, fresh, 5 bailers per hour, 170')		
Red rock	170	190
Slate and shells	190	220
Lime shell	220	230
Slate and shells	230	300
Lime shell	300	325
Slate	325	350
Coal	350	352
Lime	352	365
Red rock	365	370
Lime	370	406
Slate, light	406	475
Coal, Washington	475	480
Slate	480	520
Lime, white	520	540
Slate, dark	540	560
Lime, white	560	575
Slate and shells	575	595
Sand	595	610
Lime	610	642
Slate	642	650
Red rock	650	656
Lime	656	675
Red rock	675	690
Lime, white	690	705
Sand, white	705	720
Red rock	720	725
Lime	725	780

(OVER)

W. P. HANDENSCHILF NO. 1 WELL (Continued).

	Top.	Bottom.		Top.	Bottom.
Slate, white	680	785	Lime, firm	2505	2540
Lime	785	829	Slate, dark	2540	2560
Slate, white	829	832	Lime	2560	2606
Mapletown (Sewickley)			Slate	2606	2675
Coal	832	834	Lime, hard	2675	2688
Slate	834	839	Slate	2688	2720
Lime	839	855	Lime	2720	2727
Slate, white	855	895	Slate and shells	2727	2766
Lime	895	915	Red rock	2766	2827
Slate, white	915	933	Slate, light and dark	2827	2881
Coal, Pittsburgh	933	935	Sand, light, Gordon		
Slate	935	938	Stray	2881	2897
Lime	938	943	(gas pay, S.M., 2891-93')		
Slate and shells	943	1040	Slate and shells	2897	2908
Red rock	1040	1045	Lime, gritty	2908	2917
Lime	1045	1078	Slate and shells	2917	2938
Red rock	1078	1100	Sand, Gordon	2938	2946
Slate and shells	1100	1175	(gas pay, S.M., 2940-41')		
Sand	1175	1200	Slate, dark	2946	2967
Slate	1200	1260	Total depth		2967
Sand	1260	1300			
Slate	1300	1325			
Lime shells	1325	1400			
Slate, dark	1400	1425			
Red rock	1425	1435			
Sand	1435	1440			
Slate and shells	1440	1490			
Lime	1490	1522			
Sand (gas pay, S.M., 1522-1554)	1522	1554			
(show gas, 1533')					
Slate	1554	1565			
Sand	1565	1600			
Slate, dark	1600	1630			
Gritty lime	1630	1660			
Slate, dark	1660	1793			
Slate and shells	1793	1833			
Slate, dark	1833	1876			
Lime	1876	1886			
Sand	1886	1955			
Slate and shells	1955	1990			
Lime	1990	2005			
Slate	2005	2014			
Little Lime	2014	2040			
Big Lime	2040	2074			
(bottom of 6" casing, S.M., 2060')					
Sand, Big Injun	2074	2320			
(first gas, 97/10ths water through 2" opg. at 2115-2134', S.M.)					
Slate	2320	2325			
Gritty lime	2325	2357			
Slate and shells	2357	2408			
Slate	2408	2420			
Lime	2420	2455			
Slate and shells	2455	2487			
Sand	2487	2505			

(NEXT COLUMN)

2040
12 04
236