

29" 40"

30" 60"

0

1

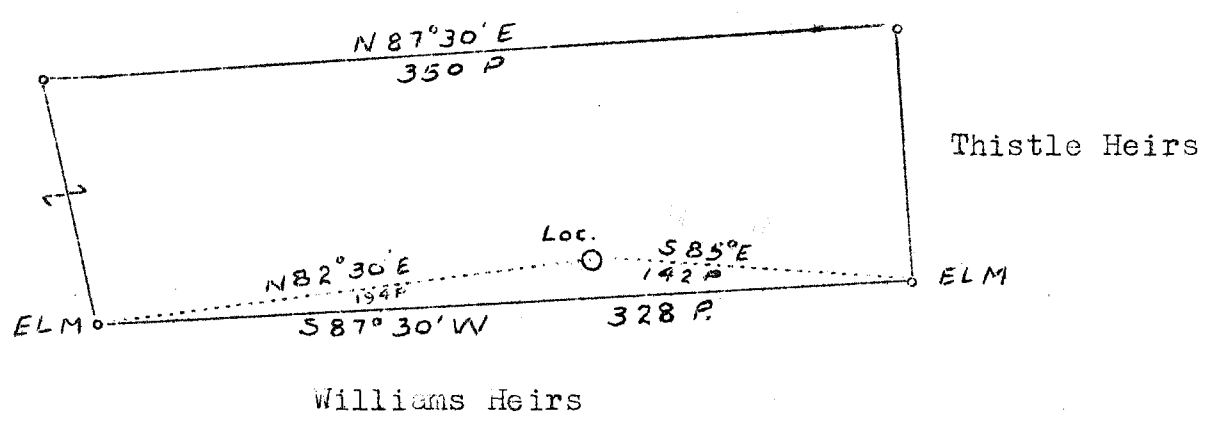
2

3

2

3

Isaac Black et als



Company THOMAS M. KING, Trustee  
 Address 730, 12th St., Huntington, W. Va.  
 Farm A. F. Cochran.  
 Tract 140 Acres Lease No. \_\_\_\_\_  
 Well (Farm) No. 1 Serial No. \_\_\_\_\_  
 Elevation (Spirit Level) 755.0  
 Quadrangle New Martinsville (C)  
 County Wetzel District Magnolia  
 Engineer C. E. Krebs  
 Engineer's Registration No. 9  
 File No. 11.419. Drawing No. \_\_\_\_\_  
 Date 11-21-36 Scale 1"=30 poles

STATE OF WEST VIRGINIA  
 Department of Mines  
 OIL AND GAS DIVISION  
 CHARLESTON

W E L L L O C A T I O N M A P

File No. 11.419

+ Denotes location of well on U. S. Topographic Maps, scale 1 to 62,500, latitude and longitude lines being represented by border lines as shown

- Denotes one inch space on border line of original tracing.