

COAL OWNED BY Roosevelt Coal & Coke Co.
 Storage
 NEW LOCATION.....
 DRILL DEEPER.....
 ABANDONMENT.....

COMPANY The Manufacturers Light & Heat
 ADDRESS 800 Union Trust Bldg. Pgh. Pa.
 FARM T. N. Scheibelhood et. al.
 TRACT _____ ACRES 116 LEASE NO. 17154
 WELL (FARM) No. 1 SERIAL No. 3542
 ELEVATION (SPIRIT-LEVEL) 1290.6
 QUADRANGLE Littleton N.W.
 COUNTY Wetzel DISTRICT Proctor
 ENGINEER Ronald X. Bell J.M.
 ENGINEER'S REGISTRATION No. _____
 FILE No. _____ DRAWING No. V-13-799
 DATE Dec. 3, 1952 SCALE 1" = 40 rods

STATE OF WEST VIRGINIA
 DEPARTMENT OF MINES
 OIL AND GAS DIVISION
 CHARLESTON

WELL LOCATION MAP

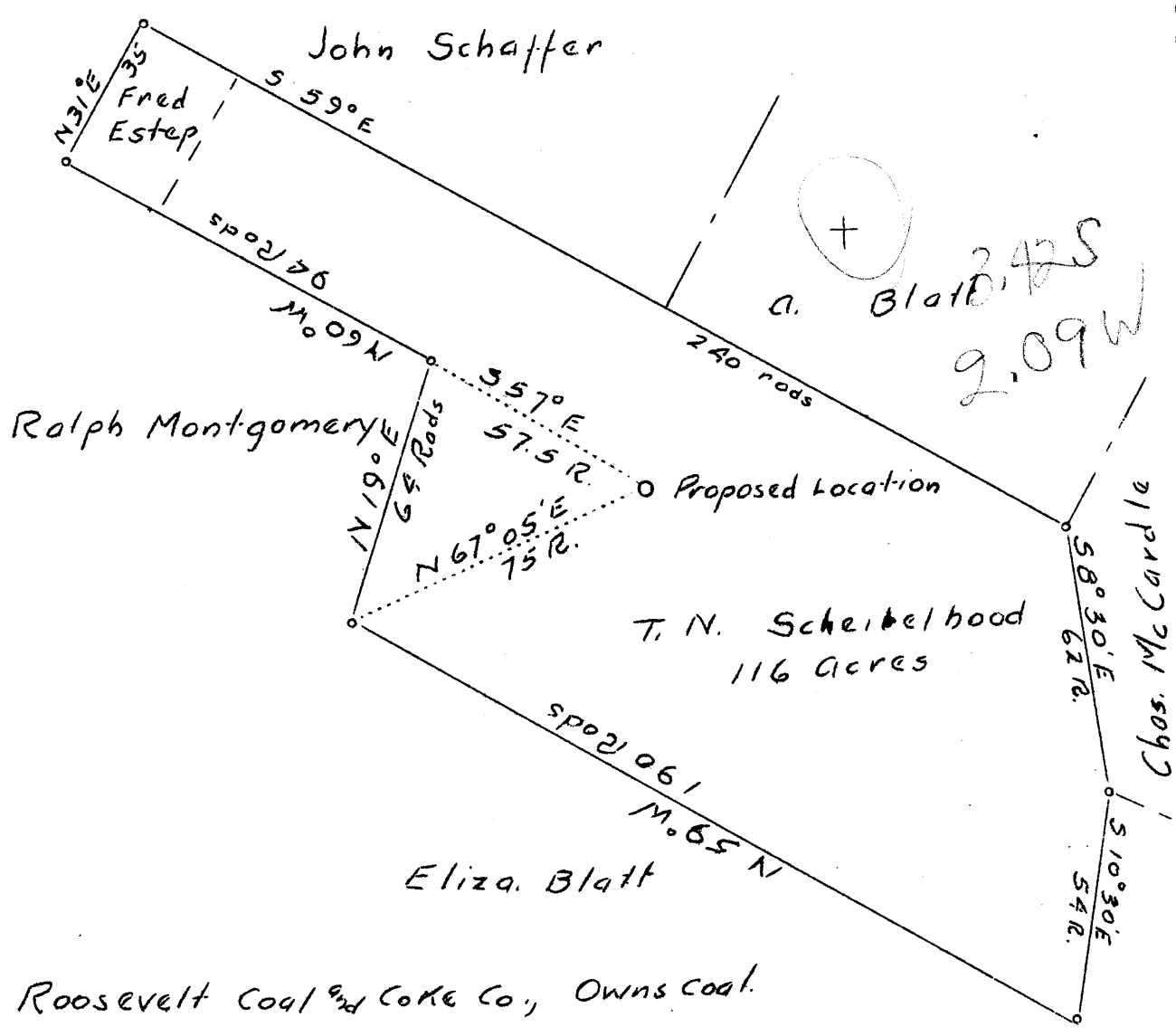
FILE No. Wet-146-Redrill

+ DENOTES LOCATION OF WELL ON UNITED STATES TOPOGRAPHIC MAPS, SCALE 1 TO 62,500, LATITUDE AND LONGITUDE LINES BEING REPRESENTED BY BORDER LINES AS SHOWN.

- DENOTES ONE INCH SPACES ON BORDER LINE OF ORIGINAL TRACING.

LATITUDE 39° 45'

LONGITUDE 80° 40'



abd. Mar. 50

Company <u>The Manufacturers Light & Heat Co</u>	State of West Virginia
Address <u>800 Union Trust Building</u>	Department of Mines
<u>Pittsburgh, Pa.</u>	Oil and Gas Division
Farm <u>T. N. Scheibelhood et al</u>	Charleston
Tract <u>Acres 116</u> Lease # <u>17154</u>	WELL LOCATION MAP
Well (Farm) No. <u>1</u> Serial No. <u>3542</u>	File No <u>WET-146</u>
Elevation (Spirit Level) <u>1290.6'</u>	+ Denotes location of well on U.S. Topographic Maps, scale 1 to 62,500 latitude and longitude lines being represented by border lines as shown
Quadrangle <u>Littleton N. W.</u>	- Denotes one inch spaces on border line of original tracing.
County <u>Wetzel</u> District <u>Proctor</u>	
Engineer <u>Donald K. Bell</u>	
Engineer's Registration No. _____	
File No. _____ Drawing No. <u>Y-7-554</u>	
Date <u>12-16-36</u> Scale <u>1" = 40 Rods</u>	



STATE OF WEST VIRGINIA
DEPARTMENT OF MINES
OIL AND GAS DIVISION

LITTLETON QUADRANGLE

WELL RECORD

Permit No. WET-146 REDRILL

Oil or Gas Well Storage
(KINS)

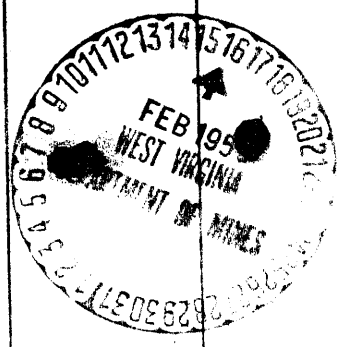
Company The Manufacturers Light & Heat Company
Address Pittsburgh, Pennsylvania
Farm T. N. Scheibelhood Acres 116
Location (waters) _____
Well No. 1, Serial 3542 Elev. 1290.6'
District Proctor County Wetzel
The surface of tract is owned in fee by T. N. Scheibelhood
Proctor, W. Va. Address _____
Mineral rights are owned by The M. F. Lgt. & Heat Co.
Address Pittsburgh, Pa.
Drilling commenced September 5, 1952
Drilling completed October 20, 1952
Date Shot _____ From _____ To _____
With _____
Open Flow _____ /10ths Water in _____ Inch
_____ /10ths Merc. in _____ Inch
Volume _____ Cu. Ft.
Rock Pressure _____ lbs. _____ hrs.
Oil _____ bbls., 1st 24 hrs.
Fresh water _____ feet
Salt water _____ feet

Casing and Tubing	Used in Drilling	Left in Well	Packers
Size			Kind of Packer
18			
18			
10	460'4"	460'4"	Size of
8 1/4	1488'7"	1488'7"	
6 3/4			Depth set
5 3/16	2129'1"	2129'1"	
2			Perf. top
2			Perf. bottom
Liners Used			Perf. top
			Perf. bottom

CASING CEMENTED _____ SIZE _____ No. Ft. _____ Date _____
COAL WAS ENCOUNTERED AT _____ FEET _____ INCHES
_____ FEET _____ INCHES FEET _____ INCHES
_____ FEET _____ INCHES FEET _____ INCHES

Formation	Color	Hard or Soft	Top	Bottom	Oil, Gas or Water	Depth Found	Remarks
Total Depth	- cleaned out			2222			
Filled back with stone			2135	2222			
Set 8W lead plug			2132	2135	Used 48 bags of cement to cement 10" casing		
Total Depth				2132			
<i>Salt</i> Maxon Sand			2105	2140	8-5/8" casing cemented with 258 bag cement		
Gas Pay			2110	2130	5-5/16" casing cemented with 398 bags cement		
					Used 7 -5/1/2" casing cetralizers		
					Hole surveyed by Schlumberger Well Surveying Corp. Houston, Texas		
					Well acidized with 25 gal. of Dowell XG.		
					Made some water in sand but no gas		

Well No. 3542 - abandoned 3/21/50
Reconditioned and transferred to storage 10/20/52 - Victory Storage Field



WEST VIRGINIA DEPARTMENT OF MINES
OIL & GAS DIVISION
W E L L R E C O R D

Permit No. Wet-146-D
- Quad.

Gas Well

		CASING & TUBING
Company	The Manufacturers Light & Heat Co.,	8-1/4 4-2
Address	800 Union Trust Bldg., Pittsburgh, Pa.	6-5/8 359-3 2234-11
Farm	T. M. Scheibelhood ACRES 116	4 1066 3167-6
Well No.	1 - 3542 ELEV. 1290.6"	3 14-5
District	Proctor - Wetzel County	
Surface	T. N. Scheibelhood, RL, Proctor, W. Va.	Packer -
Mineral	Mrs. Light & Heat Co., Pittsburgh, Pa.	Size - 8 1/2 x 6-5/8
Commenced deepening	Sept. 9, 1940	6-5/8 x 4
Completed deepening	Oct. 14, 1940	Depth set - 2127-2106-
Open Flow	22/10ths Merc. in 3"	3111
Rock Pressure	650 lbs. 48 hrs.	

DRILLING DEEPER

✓ Maxon Sand	2131	2146
Sand	2146	2207
✓ Pencil Cave	2207	2212
✓ Big Lime	2212	2243
✓ Big Injun Sand	2243	2490
Slate	2490	2502
✓ Squaw Sand	2502	2527
Slate	2527	2550
Lime Shells	2550	2575
Gritty Lime	2575	2590
Slate	2590	2660
Lime Shells	2660	2685
Slate	2685	2720
Shells	2720	2765
Slate	2765	2800
Shells	2800	2850
Slate	2850	2900
Shells	2900	2960
Shells & Slate	2960	3000
✓ 30-Foot Shells	3000	3020
Slate	3020	3030
Lime Shells	3030	3050
Pink Rock	3050	3060
Slate	3060	3079
✓ 50-Foot Sand	3079	3107
Slate	3107	3132
✓ Gordon Sand	3132	3141
Total Depth	3141	Gas 3132

2212
1281
-921

2212
2290
-90
1112
-1207

2290
-90
1200
-1011

3141
-2132
1010

WEST VIRGINIA DEPARTMENT OF MINES

OIL AND GAS DIVISION

WELL RECORD

Permit No. Wot-146

Gas Well

Littleton N. W.

Company - The Manufacturers Light & Heat
 Address - 800 Union Trust Bldg., Pittsburgh, Pa.
 Farm - T. N. Scheibethood. Acres- 116
 Location -
 Well No. - 3542 (1), Elev. 1290.6
 District - Proctor. County- Wetzel
 Surface - T. N. Scheibethood, Rd L, Proctor, W. Va.
 Mineral - The Manufacturers Light & Heat Co
 Address - Pittsburgh, Pa.
 Drilling - Commenced- 3-11-37
 Completed- 4-5-37
 Date Shot - Not shot
 Open Flow - 1,425,897
 Rock Press.-
 Oil - None
 Fresh Water-
 Salt Water -

CASING & TUBING

10 469'-5"
 8 1/4 1488'-9"
 6-5/8 2126'-10"
 4" 2142'-2"

PACKER

Kind - Anchor
 Size - 6-5/8"x4"
 Depth- 2114

Coal was encountered at 670'60"; 1007'48";
 1112'36"

FORMATION	COLOR	W. OR S.	TOP	BOTTOM	RESULT	FORMATION	COLOR	W. OR S.	TOP	BOTTOM	RESULT
Clay	Yellow	S	0	13							
Slate	White	S	13	50							
Red Rock	Red	S	50	75							
Lime	White	M	75	85							
Slate	Dark	S	85	100							
Slate	White	S	100	190							
Red Rock	Red	S	190	225							
Lime	White	H	225	275							
Slate	White	S	275	300							
Sand	White	M	300	350							
Red Rock	Red	S	350	375							
Slate	Dark	H	375	475							
Sand	White	H	475	525							
Slate	Dark	H	525	575							
Lime	White	M	575	625							
Slate	Dark	S	625	670							
Coal	Black	S	670	675							
Lime	White	H	675	725							
Slate	Dark	M	725	780							
Sand	White	H	780	810							
Slate	Dark	S	810	885							
Lime	White	H	885	940							
Slate	Dark	M	940	950							
Lime	White	H	950	995							
Slate	Dark	M	995	1007							
Mapletown Coal	Blk	S	1007	1011							
Lime	White	H	1011	1112							
Pitts. Coal	Black	S	1112	1115							
Lime	White	H	1115	1155							
Slate	Dark	S	1155	1215							
Sand	White	H	1215	1285							
Red Rock	Red	S	1285	1350							
Lime	White	H	1350	1370							
Slate	Dark	S	1370	1460							
Little Dunkard	Whi.	H	1460	1550							
Shale	Dark	S	1550	1565							
Big Dunkard	White	H	1565	1600							
Slate	Dark	S	1600	1650							
Gas Sand	White	M	1650	1692							
Slate Shells	Dark	S	1692	1840							
Salt Sand	White	H	1840	1910							
Slate	Dark	S	1910	2104							
Mason Sand	White	H	2104	2131	Gas 2116-2127						
<i>Salt</i> Total Depth				2131							

1291
670
621

1291
1112
1179