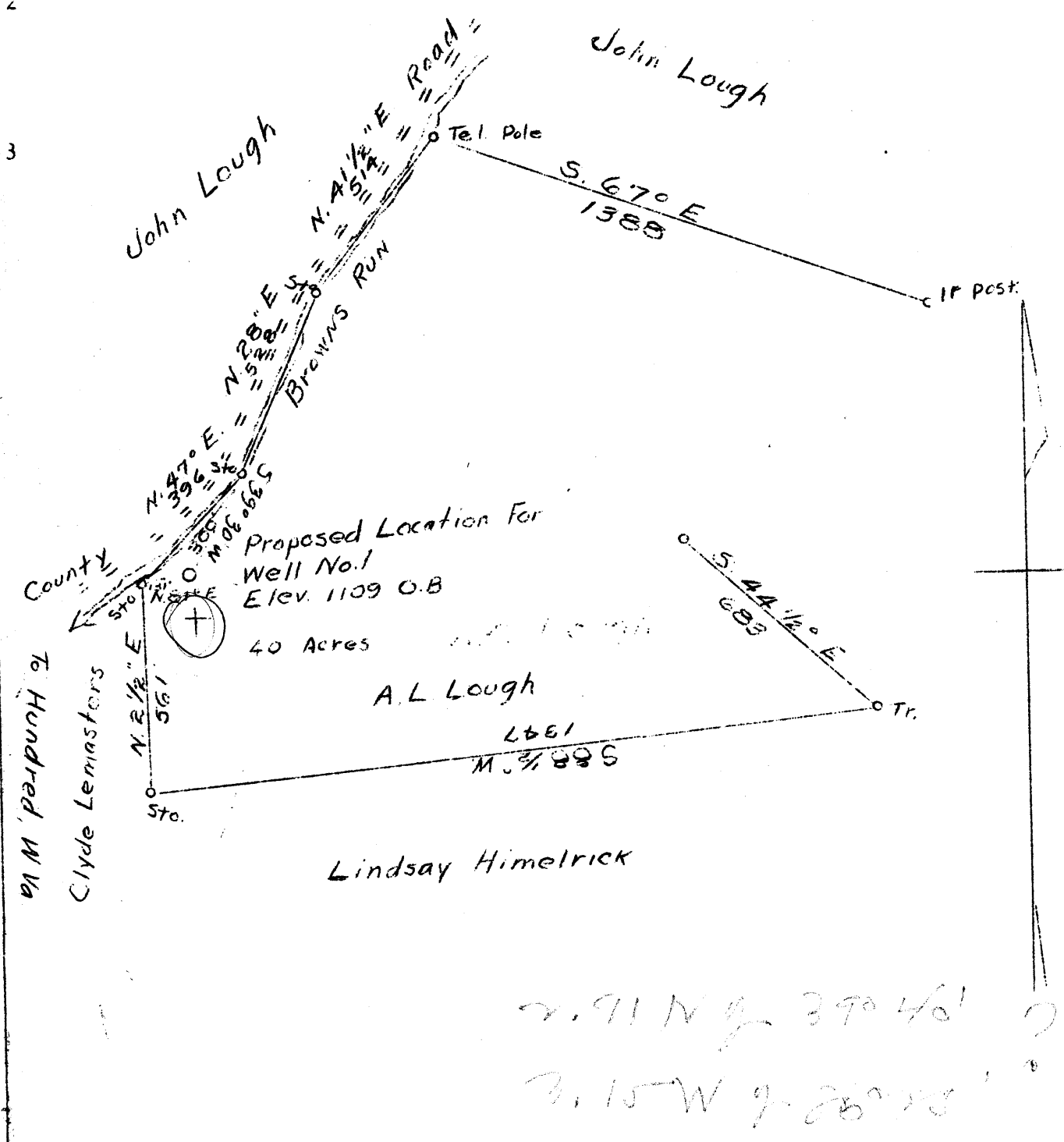


LATITUDE 39° 42' 30"

LONGITUDE 80° 28' 30"



2.91 N of 39° 46'
 3.15 W of 28° 28'

Company	Browns Run Gas
Address	Hundred, W.Va.
Farm	A.L. Lough
Tract	One Acres 40 Lease No.
Well (Farm) No.	1 Serial No.
Elevation (Spirit Level)	1109 O.B.
Quadrangle	Mannington, N.W.
County	Wetzel District Clay
Engineer	David Weed, Mannington, W.Va.
Engineer's Registration No.	
File No.	Drawing No.
Date	May 29, 1937 Scale 1"-400'

STATE OF WEST VIRGINIA
 Department of Mines
 OIL AND GAS DIVISION
 CHARLESTON

WELL LOCATION MAP

File No. Net 159

+ Denotes location of well on United States Topographic Maps, scale 1 to 62,500, latitude and longitude lines being represented by border lines as shown.

- Denotes one inch spaces on border line of original tracing.

Latitude

+
.135
1.12w

Longitude

Topo Location

7.5' Loc. _____ 15' Loc. _____
_____ (calc.) _____

Company Brown's Run Gas

Farm AL Lough

15' Quad _____
(sec.)

7.5' Quad Hundred

District Clay

WELL LOCATION PLAT

County 103 Permit 159

159

WEST VIRGINIA DEPARTMENT OF MINES
OIL & GAS DIVISION
WELL RECORD

Permit No. Wet-150
- Quad.

Oil & Gas Well

Company Browns Run Gas Co.
Address Hundred, W. Va.
Farm A. L. Lough ACREW 40
Location Browns Run
Well No. 1 ELEV. 1109
District Clay - Wetzel County
Surface & Mineral A. L. Lough, Hundred, W. Va.
Commenced June 9, 1937
Completed Aug. 12, 1937
Shot -
Open Flow 5/10ths Water in 2 inch
Volume 105,000 c.f.
Rock Pressure 50 lbs. 24 hrs.
Oil Show only
Water -

CASING & TUBING

10	126	126
8-1/4	875	875
6-5/8	1230	1230
4		1787
Coal at:	400'	60"
	636	60
	750	96

Clay	rd s		10	1st Salt S.	wh h	1518	1558 Gas 1542
Stone	wh h	10	20	Slate	dk s	1558	1588 show
Slate	dk s	20	300	2nd Salt S.	dk h	1588	1615
Lime	wh h	300	360	Slate	dk s	1615	1620
Slate	bk s	360	364	Sand	lt h	1620	1640
Lime	wh h	364	380	Slate	dk s	1640	1736
Slate	lt s	380	390	3rd Salt Sd.	wh h	1736	1780 Gas 1768
Lime	wh h	390	400	Shale	dk s	1780	1825 show
Fairview Coal	bk s	400	405	Red Rock	rd s	1825	1910
Slate	dk s	405	415	Lime	wh h	1910	1920
Lime	lt h	415	470	Slate	dk s	1920	1940
Slate	dk s	470	495	Lime Little Lime	wh h	1940	1944
Lime	wh h	495	530	Slate Little Lime	dk s	1944	1946
Red Rock	rd s	530	535	Big Lime	wh h	1946	2013
Lime	wh h	535	560	Big Injun	lt h	2013	2230 Gas 2036
Slate	dk s	560	565	Slate	dk s	2230	2265 very small
Lime	wh h	565	636	Gritty Lime	lt h	2265	2280
Mapletown Coal	bk s	636	641	Slate	dk s	2280	2335
Lime	wh h	641	650	Lime	wh h	2335	2400
Slate	lt s	650	665	Slate	dk s	2400	2410
Lime	lt h	665	730	Lime	wh h	2410	2420
Lime gritty	dk s	730	750	Lime Sholly	wh h	2420	2470
Pgh. Coal	bk s	750	758 Gas 751	Slate	dk s	2470	2500
Lime	lt h	758	770 19/10 W 1"	Lime	wh h	2500	2525
Slate	lt s	770	775	Slate	dk s	2525	2535
Sand	wh h	775	780	Lime	wh h	2535	2585
Slate	dk s	780	785	Slate	dk s	2585	2605
Lime	wh h	785	800	Lime	wh h	2605	2620
Slate	dk s	800	865	Lime Shells	wh h	2620	2722
Pink Rock	pk s	865	874	50 Ft. Sand	lt h	2722	2744 Gas 2739-
Lime Shell	lt h	874	878	Slate	lt s	2744	2760 42 36/10
Pink Rock	pk s	878	1000	30 ft. Sand	lt h	2760	2767 W 1" op.
Lime	wh h	1000	1020	Slate	dk s	2767	2769
Red Rock	rd s	1020	1040	Sand	lt h	2769	2780
Clay	gr s	1040	1070	Slate	lt s	2780	2795
Sand	lt h	1070	1088	Gordon Stray	lt h	2795	2820
Slate	dk s	1088	1159	Slate	lt s	2820	2825
Little Dunkard	lt h	1159	1185	Gordon Sand	lt h	2825	2862 Gas 2856-
Slate	dk s	1185	1230				58 24/10
Gritty Shell	wh h	1230	1235				w 1" op.
Red Rock	rd s	1235	1240	Slate	dk s	2862	2891
Slate	dk s	1240	1250	4th Sand	lt h	2891	2912 Gas 2894
Big Dunkard	wh h	1250	1284	Slate	dk s	2912	2955 50/10 W 1"
Slate	lt s	1284	1300	5th Sand	lt h	2955	2975 Oil 2957
Sand	lt h	1300	1320				show only
Slate	dk s	1320	1350	Total Depth			2975
Sand	wh h	1350	1370				
Broken Sand	wh h	1370	1385				
Slate	dk s	1385	1418				
Sand	lt h	1418	1460				
Slate	dk s	1460	1518				

1946
1109
- 837

1946
130
2076
1109
967

2076
758
1318

467
940
1007