

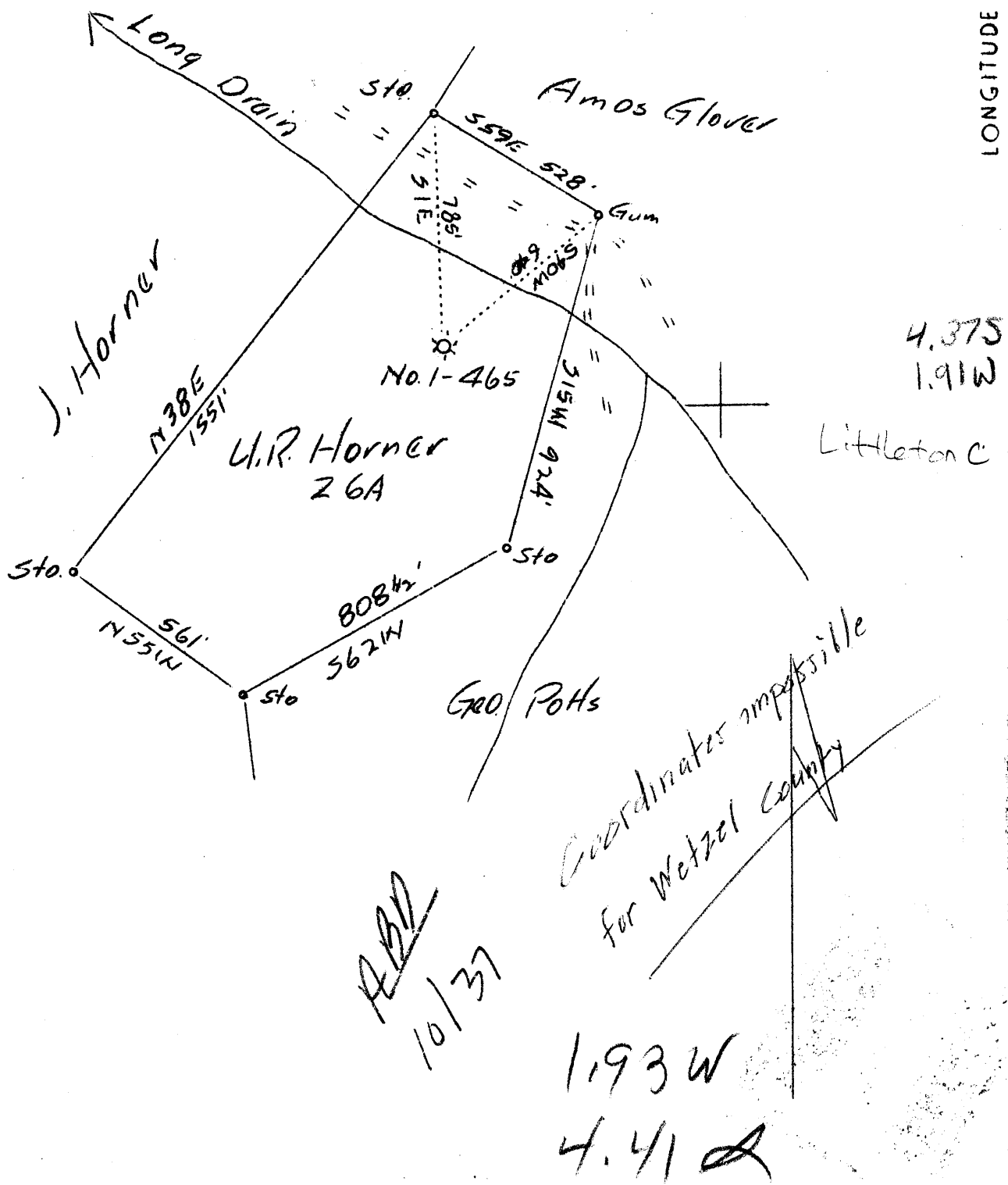
2 3

LATITUDE

80° 25' ?

LONGITUDE

39° 40'



To be drilled deeper

| | |
|-----------------------------|---|
| Company | Carnegie Nat. Gas Co. |
| Address | Pittsburgh, Penna. |
| Farm | U.R. Horner |
| Tract | Acres 26 Lease No. 8914-72 |
| Well (Farm) No. 2 | Serial No. 465 |
| Elevation (Spirit Level) | 1225 |
| Quadrangle | Mannington WC |
| County | Wetzel District Church |
| Engineer | Glen G. Huey |
| Engineer's Registration No. | |
| File No. | Drawing No. |
| Date | 6-25-37 Scale 1"=400 |

STATE OF WEST VIRGINIA
 Department of Mines
 OIL AND GAS DIVISION
 CHARLESTON

WELL LOCATION MAP
 File No. WET-165

Denotes location of well on United States Topographic Maps, scale 1 to 62,500, latitude and longitude lines being represented by border lines as shown.

Denotes one inch spaces on border line of original tracing.

Latitude

39 3730

80 27 30

0
0615
7.5' loc
Kla
715194

Longitude

Topo Location

7.5' Loc. 0.92S 15' Loc. 3.80S
0.22W (calc.) 2.44W

Company _____

Farm _____

15' Quad Mannington wc
(sec.)

7.5' Quad Slower Gap
2

District Church

WELL LOCATION PLAT

County 103 Permit 165

Church District, Wetzel County, W. Va.
 By Carnegie Natural Gas Co., Pittsburgh, Pa.
 Drilled deeper under permit Wet-165.
 On 3/4 acres, on Long Brain. Lease No. 8914-72/ (26 acres, dpm. rec.)
 Elevation, 1225' L.
 Surface owned by Jarret Horner, Glovers Gap, W. Va., and minerals
 by W. R. Horner Heirs, Martin Horner, Admr., Barnshaw, W. Va.
 Drilling commenced June 24, 1914; completed, Nov. 2, 1914 (to 2305').
 Drilling deeper commenced Mar. 18, 1918; completed, April 24, 1918
 (to 3146') (open flow, 18/10 Merc. in 2").
 Open flow, 28/10ths Merc. in 2".
 Fresh water at 1710'.
 10" casing, 205'; 8 1/2", 1407'; 6 5/8", 2070'; 2" tubing, 2305'.
 Coal was encountered at 832-836 and 930-938'.
 Ball packer, 6 5/8" x 2.
 Record to 3146' to Dept. of Mines July 30, 1937.
 Record from 3146' to 3368' to Dept. of Mines Oct. 16, 1937.
 Drilling deeper (from 3146') commenced Sept. 29, 1937; completed,
 Oct. 5, 1937.
 Gas well. Records to RCT from Mrs. Griffith Sept. 2, 1938.

| | Top. | Bottom. |
|----------------------------------|------|---------|
| Mapletown (Sewickley) Coal | 832 | 836 |
| Pittsburgh Coal | 930 | 938 |
| Little Dunkard Sand | 1280 | 1290 |
| Big Dunkard Sand | 1407 | 1450 |
| Gas Sand (water, 1710') | 1695 | 1715 |
| 1st Salt Sand | 1745 | 1870 |
| 2nd Salt Sand | 1900 | 1962 |
| Mountain Sand (gas, 2080') | 2070 | 2130 |
| Big Lime | 2130 | 2190 |
| Big Injun Sand (gas, 2207-2210') | 2190 | |
| Total depth | | 2305 |
| (DRILLED DEEPER Apr. 24, 1918) | | |
| Big Injun Sand | | 2385 |
| Fifty-foot Sand | 2860 | 2895 |
| Thirty-foot Sand | 2957 | 2995 |
| Gordon Strey Sand | 3012 | 3040 |
| Gordon Sand | 3040 | 3080 |
| Fourth Sand (gas, 3118') | 3100 | 3123 |
| Total depth | | 3146 |
| (DRILLED DEEPER Oct. 5, 1937) | | |
| Commenced drilling deeper at | | 3146 |
| Lime, gray, hard | 3146 | 3151 |
| Slate, dark, soft | 3151 | 3161 |
| Slate, light, soft | 3161 | 3167 |
| Slate, dark, soft | 3167 | 3173 |
| Lime, gray, hard | 3173 | 3178 |
| Limo. gray, hard | 3178 | 3185 |
| Lime, gray, hard | 3185 | 3190 |
| Slate, dark, soft | 3190 | 3208 |
| Slate, gray, soft | 3208 | 3214 |
| Lime shells, gray, soft | 3214 | 3222 |
| Slate, dark, soft | 3222 | 3230 |
| Limo. gray, hard | 3230 | 3236 |
| Slate, gray, soft | 3236 | 3258 |
| Lime shells, gray, soft | 3258 | 3265 |

3146
 2305

 841

V. R. HORNER NO. 1 (465) WELL (Continued).

| | Top. | Bottom. |
|-------------------------|------|---------|
| Slate, gray, soft | 3265 | - 3280 |
| Lime, gray, hard | 3280 | - 3290 |
| Lime shells, gray, soft | 3290 | - 3300 |
| Slate, dark, soft | 3300 | - 3310 |
| Lime shells, gray, soft | 3310 | - 3315 |
| Slate, dark, soft | 3315 | - 3325 |
| Slate, light, soft | 3325 | - 3345 |
| Lime, gray, hard | 3345 | - 3350 |
| Slate, dark, soft | 3350 | - 3368 |
| Total depth | | 3368 |

3368
 3146

 222